

ADDENDUM #2

Date: May 15, 2017

This Addendum applicable to work designated herein shall be understood to be and is an Addendum and as such shall be part of and included in the Contract.

To all bidders for furnishing all labor and materials necessary for:

**A NEW BRANCH BANK BUILDING
THE BANK OF COMMERCE
SHELLEY, IDAHO**

Failure to acknowledge receipt of this Addendum on the bid proposal form may result in rejection of your bid.

Addendum consists of: 1 page with attached Documents consisting of:

- a. Specification Section 08 1416 – Flush Wood Doors.
- b. Drawing Sheet E2.0, revised 5/15/17.
- c. Mechanical prior approvals.

ARCHITECTURAL ITEMS

1. Drawing Sheet A6.1, Door Type A. Delete the grills noted on each side of the glass. No grills are required. Delete references to grids in Door Schedule Notes Number 5.
2. Drawing Sheet A6.1, Door Type B. The grills noted shall be between the glazing as noted on the Door Schedule Notes Number 4.
3. Specification Section 08 1416 – Flush Wood Doors. Add attached specification section to project manual.
4. Specification Section 08 4113 – Aluminum-Framed Entrances and Storefronts. Paragraphs 2.2.A and 2.3.A, Subject to compliance with specifications, United States Aluminum is an acceptable manufacturer.

MECHANICAL ITEMS

1. See attached for prior approval items.

ELECTRICAL ITEMS

1. Drawing Sheet E2.0 attached. Revised lighting control in Lobby and Teller area, See attached.
2. Drawing Sheet E2.0 attached. Modified keynotes 1 and 7, See Attached.
3. Drawing Sheet E2.0 attached. Added prior approvals, See Attached.

END OF ADDENDUM NO. 2

SECTION 08 1416 - FLUSH WOOD DOORS

PART 1 - GENERAL

1.1 SUMMARY

- A. Section Includes:
 - 1. Solid-core doors with wood-veneer faces.
 - 2. Factory fitting flush wood doors to frames and factory machining for hardware.

1.2 ACTION SUBMITTALS

- A. Product Data: For each type of door.
- B. Shop Drawings: Indicate location, size, and hand of each door; elevation of each kind of door; construction details not covered in Product Data; and the following:
 - 1. Dimensions and locations of mortises and holes for hardware.
 - 2. Dimensions and locations of cutouts.

1.3 INFORMATIONAL SUBMITTALS

- A. Sample Warranty: For special warranty.

1.4 FIELD CONDITIONS

- A. Environmental Limitations: Do not deliver or install doors until spaces are enclosed and weathertight, wet work in spaces is complete and dry, and HVAC system is operating and maintaining ambient temperature and humidity conditions at occupancy levels during remainder of construction period.

1.5 WARRANTY

- A. A. Special Warranty: Manufacturer agrees to repair or replace doors that fail in materials or workmanship within specified warranty period.
 - 1. Failures include, but are not limited to, the following:
 - a. Warping (bow, cup, or twist) more than 1/4 inch in a 42-by-84-inch section.
 - b. Telegraphing of core construction in face veneers exceeding 0.01 inch in a 3-inch span.
 - 2. Warranty shall also include installation and finishing that may be required due to repair or replacement of defective doors.
 - 3. Warranty Period for Solid-Core Interior Doors: Life of installation.

PART 2 - PRODUCTS

2.1 MANUFACTURERS

- A. Manufacturers: Subject to compliance with requirements, provide products by one of the following:
 - 1. Algoma Hardwoods, Inc.
 - 2. Eggers Industries.
 - 3. Graham Wood Doors; ASSA ABLOY Group company.
 - 4. Ipik Door Company.
 - 5. Marshfield DoorSystems, Inc.
 - 6. Mohawk Flush Doors, Inc.
 - 7. Oshkosh Door Company.
 - 8. Vancouver Door Company.
 - 9. VT Industries Inc.

2.2 FLUSH WOOD DOORS, GENERAL

- A. Quality Standard: In addition to requirements specified, comply with AWT's, AWMAC's, and WT's "Architectural Woodwork Standards."
- B. WDMA I.S.1-A Performance Grade:
 - 1. Heavy Duty unless otherwise indicated.
- C. Particleboard-Core Doors:
 - 1. Particleboard: ANSI A208.1, Grade LD-2.
 - 2. Blocking: Provide wood blocking in particleboard-core doors as needed to eliminate through-bolting hardware.

2.3 VENEER-FACED DOORS FOR TRANSPARENT FINISH

- A. Interior Solid-Core Doors:
 - 1. Grade: Custom (Grade AA faces).
 - 2. Species: Alder.
 - 3. Cut: Plain sliced (flat sliced).
 - 4. Match between Veneer Leaves: Pleasing match.
 - 5. Core: Particleboard.
 - 6. Construction: Five or seven plies. Stiles and rails are bonded to core, then entire unit is abrasive planed before veneering. Faces are bonded to core using a hot press.

2.4 FABRICATION

- A. Factory fit doors to suit frame-opening sizes indicated. Comply with clearance requirements of referenced quality standard for fitting unless otherwise indicated.
- B. Factory machine doors for hardware that is not surface applied.

PART 3 - EXECUTION

3.1 INSTALLATION

- A. Hardware: For installation, see Section 08 7100 "Door Hardware."
- B. Installation Instructions: Install doors to comply with manufacturer's written instructions and referenced quality standard, and as indicated.
- C. Job-Fitted Doors: Align and fit doors in frames with uniform clearances and bevels as indicated below; do not trim stiles and rails in excess of limits set by manufacturer or permitted for fire-rated doors. Machine doors for hardware. Seal edges of doors, edges of cutouts, and mortises after fitting and machining.
 - 1. Clearances: Provide 1/8 inch at heads, jambs, and between pairs of doors. Provide 1/8 inch from bottom of door to top of decorative floor finish or covering unless otherwise indicated. Where threshold is shown or scheduled, provide 1/4 inch from bottom of door to top of threshold unless otherwise indicated.
- D. Factory-Fitted Doors: Align in frames for uniform clearance at each edge.

END OF SECTION 08 1416

ADDENDUM NO.2

May 15, 2017

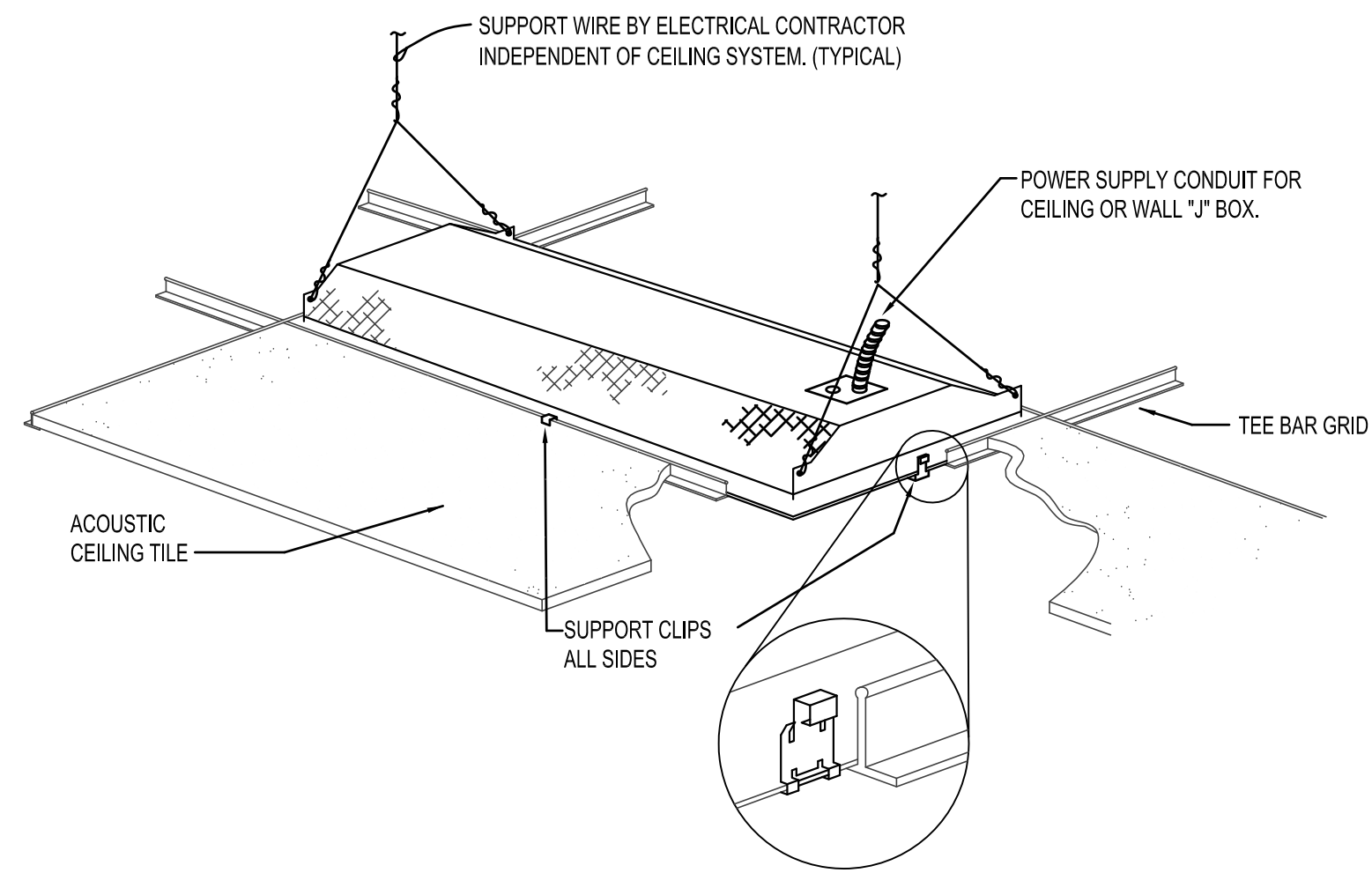
Project: Shelley Bank of Commerce

Prior Approvals:

22 3330	Electric Storage Water Heaters: Chronomite
22 4001	Plumbing Fixtures: Symmons, Chicago, JR Smith
22 4307	Drinking Water Cooling System: Murdock/Acorn
23 3114	Low-Pressure Steel Ductwork: Air-Rite
23 3713	Air Outlets and Inlets: Carnes, Cesco

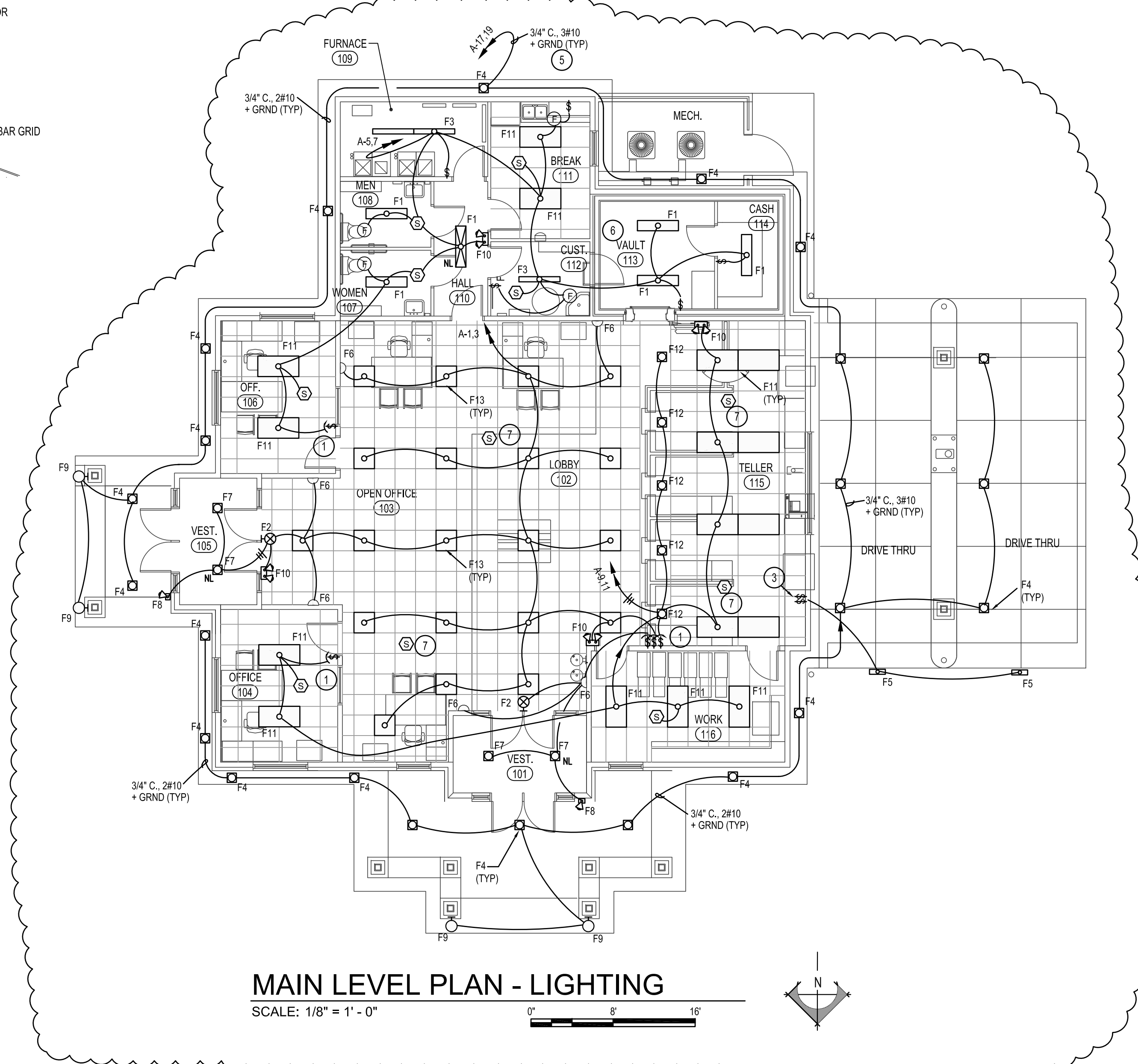
END OF ADDENDUM

5/15/2017 10:33:28 AM \\PESERVER\Payne Engineering_Data\2017\Shelley Bank of Commerce - 1734\10_Working Drawings\1734E1.dwg



RECESSED LIGHT FIXTURE MOUNTING DETAIL

NO SCALE



- KEY NOTES**
- 1 PROVIDE ON/OFF/10-10V DIMMING AS SHOWN. PROVIDE AND INSTALL CONDUCTORS AND CONNECTIONS.
 - 2 LOCATE LIGHT FIXTURES IN MECHANICAL ROOMS AFTER ALL MECH. EQUIP. IS IN PLACE. ADJUST FIXTURE LOCATIONS TO BEST SUITE THE MECH. PIPING, DUCTWORK, ETC. PROVIDE CHAIN SUSPENSION KITS AS NECESSARY TO SUSPEND BELOW DUCTS, IF NECESSARY.
 - 3 THREE POSITION TOGGLE SWITCH (TYPICAL OF 3) LABEL EACH SWITCH WITH A PERMANENT MICARTA LABEL THAT INDICATES WHICH LANE FIXTURE IT CONTROLS.
 - 4 CONNECT LIGHTING CIRCUITS IN THIS AREA SUCH THAT ONE CIRCUIT CONTROLS THE CENTER LAMP IN EACH FIXTURE AND THE OTHER CIRCUIT CONTROLS TO TWO OUTBOARD LAMPS IN EACH FIXTURE. THESE FIXTURES ARE ALSO SWITCHED IN SAME FASHION, AS CALLED OUT IN NOTE 1 ABOVE.
 - 5 CIRCUIT VIA TIME CLOCK / PHOTO-CELL CONTROL. LOCATE PHOTO-CELL OUTSIDE ON BUILDING SO AS NOT TO BE AFFECTED BY ARTIFICIAL LIGHT. LOCATE TIME CLOCK ADJACENT TO PANEL WHERE CIRCUITED. CONNECT SO THAT PHOTO-CELL TURNS LIGHTS ON AND TIME CLOCK TURNS LIGHTS OFF. CONTROL COMPONENTS TO BE SUCH AS INTERMATIC #E1-70215C PROVIDE WITH A 30 AMP 6-POLE CONTACTOR COMPLETE WITH PHOTO-CELL.
 - 6 PROVIDE AND INSTALL AN F1 FIXTURE, SWITCH AND RECEPTACLE IN STORAGE ROOM ABOVE VAULT. CONNECT TO VAULT LIGHTING CIRCUIT.
 - 7 CONNECT OCC SENSORS IN THIS ROOM SUCH THAT ANY SENSOR WILL ACTIVATE ALL OF THE LIGHTING.

MAIN LEVEL PLAN - LIGHTING

SCALE: 1/8" = 1' - 0"
0" 8" 16"
N

LIGHT FIXTURE SCHEDULE							
TYPE	DESCRIPTION	MOUNT	VOLT	LAMPS	MFGR.	CATALOG #	NOTES
F1	1x4 LED SURFACE WRAP LENS	SURFACE	120	LED INCLUDED	LITHONIA	LBL4800LM-80CRI-40K-MIN1-ZT-MVOLT	
F2	EMERG. WBATTERY LED EXIT LT. (SINGLE FACE)	WALL @ 7'-6" OR CLG.	120/277	INCLUDED	LITHONIA	LES W1G 120/277 ELN G402 WB WW	
F3	4' LED STRIP LIGHT	SURFACE OR COVE	120	LED INCLUDED	LITHONIA	ZL1D-L48-5000LM-FST-MVOLT-40K-80CRI-HWH	
F4	EXTERIOR RECESS SOFFIT CAN LT. LED	RECESSED	120	LED INCLUDED	LITHONIA	LDN6-40-40-L06-AR-LSS-MVOLT-EZ10	
F5	DRIVE-UP TELLER OPEN / CLOSE SIGNS	CANOPY FASCIA	120	LED INCL WITH FIXTURE	ALKCO LIGHTTECH	LD718 LS-9010-120	
F6	INTERIOR DECORATIVE WALL SCONCE FIXTURES	WALL @ 6'-8"	120	INCLUDED	TUJ	"LANDMARK S" LND5-L25-120-WAL-CBA-40K	1
F7	INTERIOR RECESS CAN W/LOW IRR. REFLECTOR	RECESSED	120	LED INCLUDED	LITHONIA	LDN6-40-30-L06-AR-LSS-MVOLT-EZ10	
F8	EXTERIOR EMERG. EGRESS LIGHT RATED FOR WET LOCATIONS & LOW TEMP. BALLAST	EXTERIOR WALL @	120V	INCLUDED	LITHONIA	AFN-(SCBA)EXT	
F9	EXTERIOR DECORATIVE WALL MOUNT (LED)	WALL AS PER ARCH.	120	INCLUDED	TUJ	FALDO-L37-120-WAL-ZE1100-CBA-40K	1

TYPE	DESCRIPTION	MOUNT	VOLT	LAMPS	MFGR.	CATALOG #	NOTES
F10	DECORATIVE STYLE EMERGENCY WALL PACK FIXTURE	WALL AS PER ARCH.	120/277	INCLUDED	LITHONIA	AFN-(SCBA)	
F11	2x4 LED LAYIN FIXTURE	RECESSED	120	INCLUDED	LITHONIA	2BLT460L-ADP-EZ1-LP840	
F12	TELLER LINE RECESS CAN LITS	RECESSED	120	INCLUDED	LITHONIA	LDN6-40-30-L06-AR-LSS-MVOLT-EZ10	
F13	2x2 RECESSED LED WITH CENTER LENS	RECESSED	120	INCLUDED	LITHONIA	2BLT240L-ADP-EZ1-LP840	

PRIOR APPROVALS:
THE FOLLOWING FIXTURES AS SUBMITTED AND APPROVED ARE ACCEPTABLE TO BID:
DMA LIGHTING, BOISE IDAHO.
IDAHO LIGHTING SOLUTIONS, BOISE, IDAHO

FIXTURE NOTES:
1 STANDARD COLOR / FINISH, TO BE SELECTED BY ARCHITECT.

nbwarchitects p.a.
 ARCHITECTURE / PLANNING / INTERIORS
 SCOTT L. NELSON, A.I.A. KEVIN R. BODILY, A.I.A. JAMES H. WYATT, A.I.A.
 910 JOHN BOONS PARKWAY, P.O. BOX 2312 - IDAHO FALLS, IDAHO 83402-2312
 (208) 522-8770 (208) 522-8785 (208) 522-8786

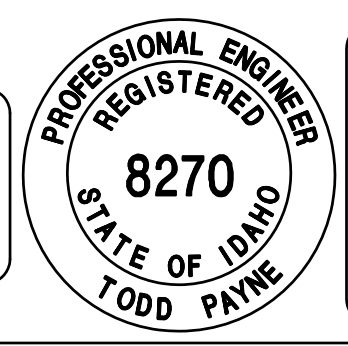
NEW BRANCH FOR:
BANK OF COMMERCE
 SHELLEY, IDAHO

 SHEET TITLE:
MAIN PLAN LIGHTING

REVISIONS
5-15-17 ADDENDUM

PROJECT NO.
16062
DATE:
APRIL 2017
DRAWN BY:
mmp
CHECKED BY:
tep
DRAWING NO.:

ORIGINAL SIGNED BY:
TODD E. PAYNE
DATED ORIGINAL SIGNED:
4-24-2017
ON FILE AT:
PAYNE ENGINEERING INC.



P.E. JOB #1734

IPAYNE
Engineering Inc.
Consulting Engineers

1823 E. Center
Pocatello, Idaho 83201
tel (208) 232-4439 fax (208) 232-1435

E2.0