

ADDENDUM #2

Date: March 13, 2017

This Addendum applicable to work designated herein shall be understood to be and is an Addendum and as such shall be part of and included in the Contract.

To all bidders for furnishing all labor and materials necessary for:

**KENWORTH SALES COMPANY, INC.
IN ELKO NEVADA, NBW#13035**

Failure to acknowledge receipt of this Addendum on the bid proposal form may result in rejection of your bid.

Addendum consists of: 2 pages. Attached Documents consist of - AD2.1, C8.2, SK-E3, E5.2

ATTENTION ITEMS

1. In order to use fly ash instead of lithium additive, test results must be submitted and approved prior, substantiating that the fly ash will effectively mitigate alkali-silica reaction (ASR) in the proposed aggregate to be used in this project. Otherwise, lithium additive is to be used as outlined in the specifications.

SPECIFICATION ITEMS

1. Section 03 4713 - Tilt-up Concrete, 1.5, A. Under part A, delete item 1, which requires the manufacturer to be NRMCA certified.

CIVIL ITEMS

1. Sheet C8.2 "SWPPP - VICINITY MAP" has been added to the drawing set. See attached

SITE DEVELOPMENT ITEMS

Sheet SD1.2, detail 2. Delete bollards on both sides of transformer unit. The remaining three bollards in front of the unit shall all be removable.

ARCHITECTURAL ITEMS

1. See attached AD2.1 for updates to Sheet A5.1, Enlarged floor plan 2. Updates include:
 - a. Updated wall opening dimensions
 - b. Added 13th locker.
 - c. Laundry unit position and nomenclature have been updated to reflect the specification. The shelving unit (as depicted with square cubbies) shall still be provided, but as specified in Section 10 5113, 2.7 - Metal Shelving, Penco Clipper Shelving. Final location of this item shall be by owner.
 - d. Corner cover between lockers shall be added.

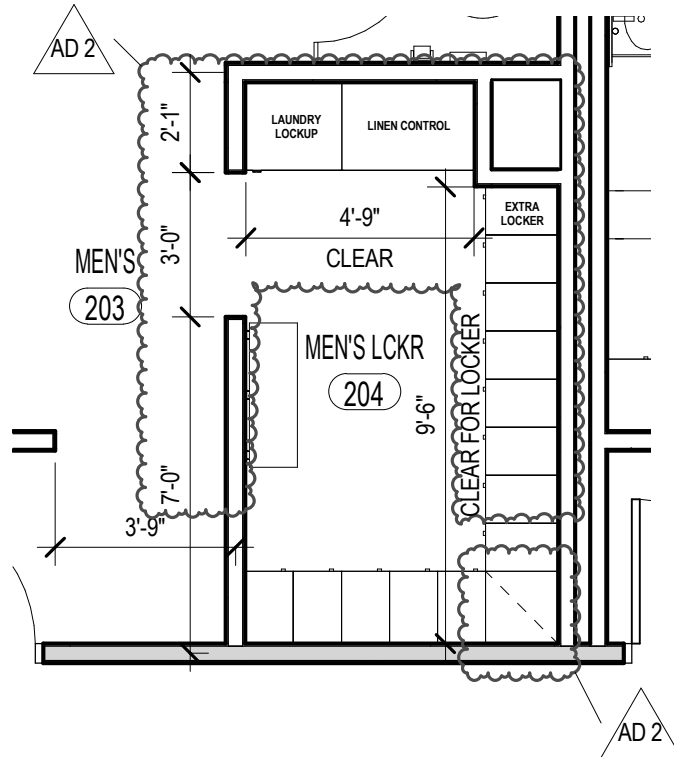


- e. Upper right corner of room shall be furred out between the lockers and linen control units. Maintain clear dimensions for locker equipment.

ELECTRICAL ITEMS

1. Sheet E1.1, Remove (1) of the Type F14 fixtures at the main canopy, see attached sketch sheet SK-E3.
2. Sheet E5.2 has been re-issued with addendum #2 changes. Light fixtures for project shall be Titan LED as specified in revised fixture schedule, no substitutions allowed. See attached sheet E5.2 for revised fixture schedule.

END OF ADDENDUM NO.2



1
AD2.1

MEN'S LOCKER

SCALE: 1/4" = 1'-0"

PROJECT:
KENWORTH SALES COMPANY INC.

SHEET TITLE:
MEN'S LOCKER ROOM

nbwarchitects p.c.
ARCHITECTURE / PLANNING / INTERIORS

SCOTT L NIELSON, A.I.A. KEVIN R BODILY, A.I.A. JAMES H WYATT, A.I.A.

990 JOHN ADAMS PARKWAY P.O. BOX 2212 - IDAHO FALLS, IDAHO 83402-2212

(P) 208-522-8779 (F) 208-522-8785 (W) nbwarchitects.com

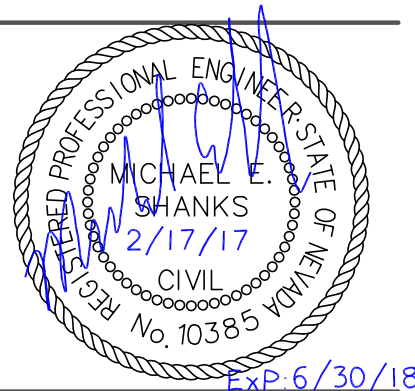
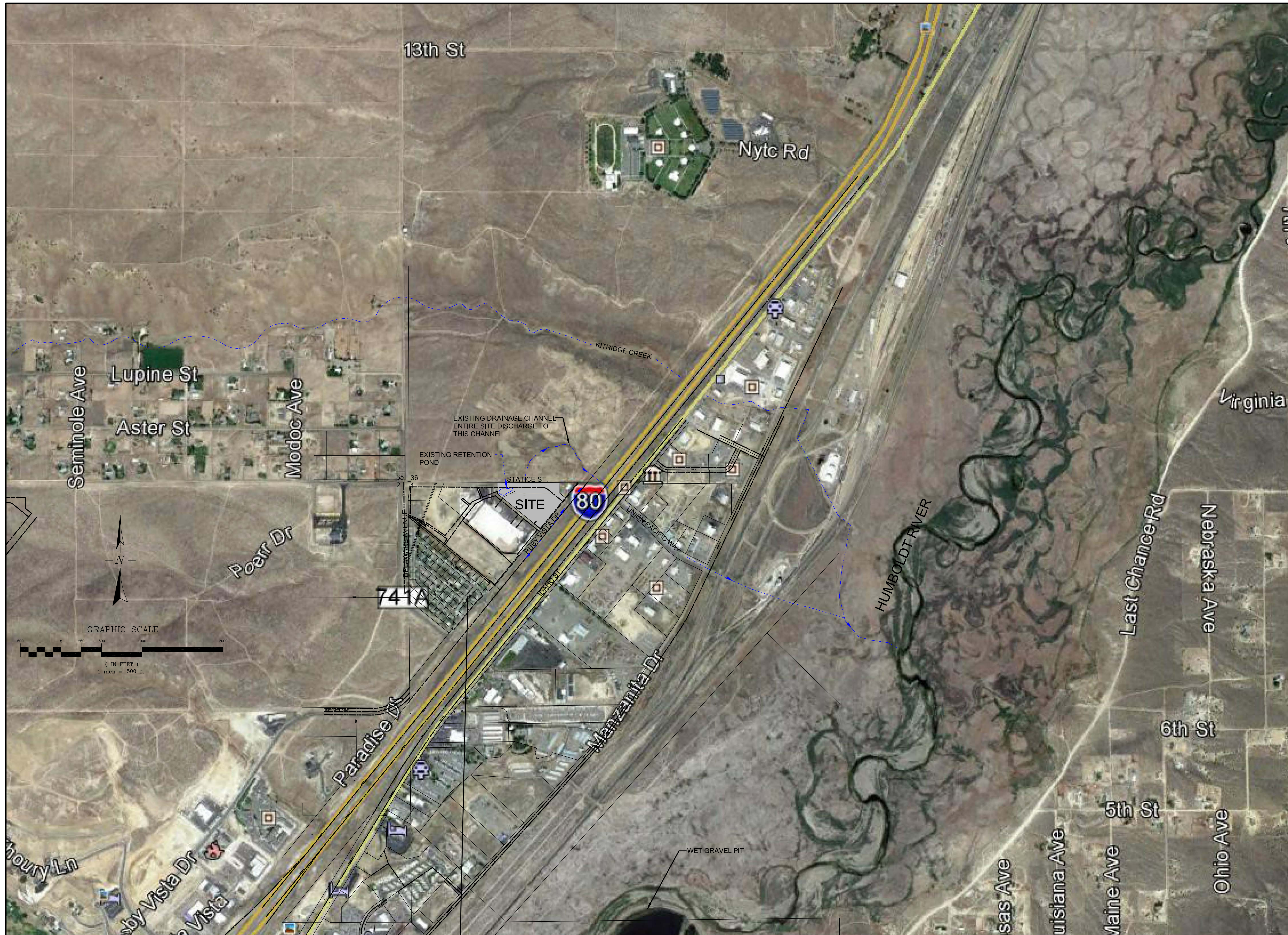
PROJECT NO.
13035

DATE:
MAR. 2017

DRAWN BY:
GLN

DRAWING NO.:

AD2.1



nbwarchitects p.a.
 ARCHITECTURE / PLANNING / INTERIORS
 SCOTT L. NELSON, A.I.A., KEVIN R. BODILY, A.I.A., JAMES H. WYATT, A.I.A.
 990 JOHN HARRIS PARKWAY, P.O. BOX 2212 - HIGHLAND FALLS, NEBRASKA 68403-2212
 (P) 208-522-8779 (F) 208-522-8985 (W) nbwarchitects.com

PROJECT: NEW CONSTRUCTION FOR:
KENWORTH SALES COMPANY INC.
 4224 RUBY VISTA DRIVE
 ELKO, NEVADA 89801

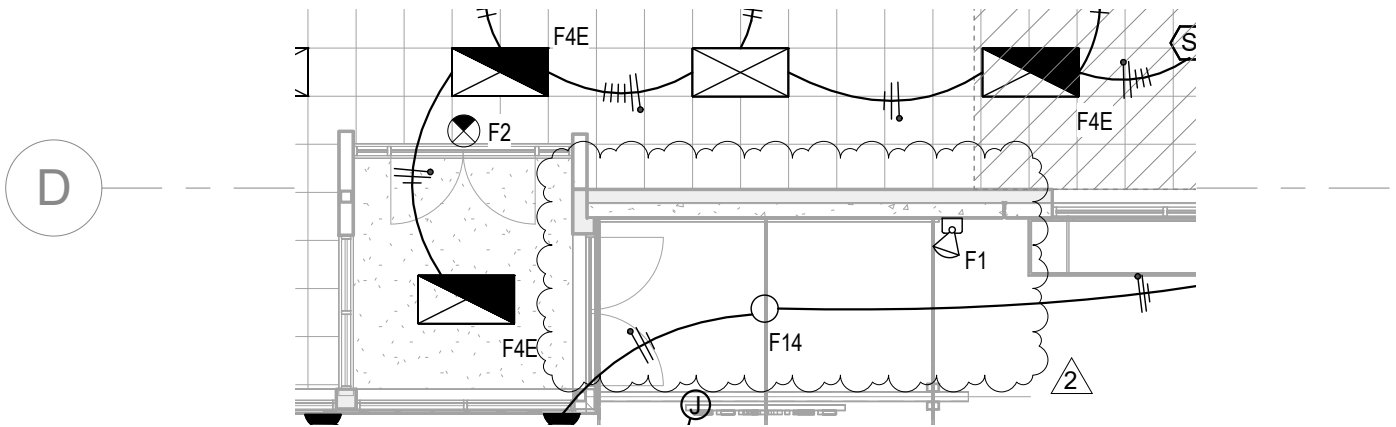
SHEET TITLE: SWPPP - VICINITY MAP

REVISIONS

PROJECT NO. 13035
 DATE: 2-17-2017
 DRAWN BY: MES
 CHECKED BY: SN

DRAWING NO.: **C8.2**

ADDENDUM #2



PROJECT:
KENWORTH SALES CO., INC.

SHEET TITLE:
MAIN FLOOR PLAN - LIGHTING

nbwarchitects p.a.
ARCHITECTURE / PLANNING / INTERIORS

SCOTT L NIELSON, A.I.A. KEVIN R BODILY, A.I.A. JAMES H WYATT, A.I.A

990 JOHN ADAMS PARKWAY P.O. BOX 2212 - IDAHO FALLS, IDAHO 83402-2212

(P) 208-522-8779 (F) 208-522-8785 (W) nbwarchitects.com

PROJECT NO.
13035

DATE:
FEB. 2017

DRAWN BY:
Author

DRAWING NO.:

SK-E3

LIGHTING FIXTURE SCHEDULE								
TYPE	FIXTURE DESCRIPTION	MOUNTING	VOLTS	LAMPS	MFGR.	CATALOG #	APPROVED EQUALS	NOTES
F1	WALL MOUNTED EXTERIOR EMERGENCY EGRESS LIGHT, W/HEATER	WALL ABOVE DOOR	120-277	WITH FIXTURE	LITHONIA	AFN-SCBA-EXT	DUAL-LITE	
F2	BATTERY EXIT SIGN, THERMOPLASTIC, GREEN LED, SINGLE/DOUBLE FACE	WALL OR CEILING	120-277	WITH FIXTURE	LITHONIA	LQM-S-W-3-G-120/277-EL N		
F3	6" OPEN RECESSED DOWNLIGHT	RECESSED	120	TITAN: 18-R40-17-50K	LITHONIA	LP6N-609AZ	NO SUBSTITUTIONS	4
F4	2X4 LAY-IN TROFFER, 0-10V DIMMING	RECESSED	120-277	TITAN: (3) 17C-4-17-50K	TITAN LED	12-DEC24-3L-R	NO SUBSTITUTIONS	4
F4E	2X4 LAY-IN TROFFER, 0-10V DIMMING, W/ EMERG. BATTERY PACK	RECESSED	120-277	TITAN: (3) 17C-4-17-50K	TITAN LED	12-DEC24-3L-R-BATTERY PACK	NO SUBSTITUTIONS	4
F5	4FT SURFACE WRAP, 0-10V DIMMING	SURFACE	120-277	TITAN: (2) 17C-4-17-50K	TITAN LED	12-DEC14-2L-SM	NO SUBSTITUTIONS	4
F5A	4FT SURFACE WRAP, OCC. SENSOR	SURFACE	120-277	TITAN: (2) 17C-4-17-50K	TITAN LED	12-DEC14-2L-SM/SENSOR-LSXR610	NO SUBSTITUTIONS	4
F5E	4FT SURFACE WRAP, 0-10V DIMMING, W/ EMERG. BATTERY PACK	SURFACE	120-277	TITAN: (2) 17C-4-17-50K	TITAN LED	12-DEC14-2L-SM	NO SUBSTITUTIONS	4
F6	4FT STRIPLIGHT, W/LENS, WIREGAURD, AIRCRAFT CABLE KIT	SURFACE OR SUSPENDED	120-277	TITAN: (2) 17C-4-17-50K	TITAN LED	12-232-STRIP4-NL	NO SUBSTITUTIONS	4
F6A	4FT STRIPLIGHT, W/ LENS, WIREGAURD, OCC. SENSOR	SURFACE	120-277	TITAN: (2) 17C-4-17-50K	TITAN LED	12-232-STRIP4-NL/SENSOR-LSXR610	NO SUBSTITUTIONS	4
F6AE	4FT STRIPLIGHT, W/LENS, WIREGAURD, OCC. SENSOR, EMERG. BATTERY PACK	SURFACE	120-277	TITAN: (2) 17C-4-17-50K	TITAN LED	12-232-STRIP4-NL/EM BATTERY-17-LEM05C-BB-4/SENSOR-LSXR610	NO SUBSTITUTIONS	4
F6E	4FT LED STRIPLIGHT, W/LENS, WIREGAURD, AIRCRAFT CABLE KIT, EMERG. BATTERY PACK	SURFACE OR SUSPENDED	120-277	TITAN: (2) 17C-4-17-50K	TITAN LED	12-232-STRIP4-NL/EM BATTERY-17-LEM05C-BB	NO SUBSTITUTIONS	4
F7	8FT STRIPLIGHT, WIREGAURD, AIRCRAFT CABLE KIT, 0-10V DIMMING	SURFACE OR SUSPENDED	120-277	TITAN: (2) 17C-8-32-BP-57K	TITAN LED	12-296-STRIP8	NO SUBSTITUTIONS	4
F7E	8FT STRIPLIGHT, W/ WIREGAURD, AIRCRAFT CABLE KIT, 0-10V DIMMING, EM BATTERY PACK	SUSPENDED	120-277	TITAN: (2) 17C-8-32-BP-57K	TITAN LED	12-296-STRIP8/EM BATTERY-17-LEM05C-BB-4	NO SUBSTITUTIONS	4
F8	4FT VAPOR-TIGHT STRIP LIGHT, WET LOCATION RATED	SURFACE	120-277	TITAN: (2) 17C-4-17-50K	TITAN LED	1200-2-WL-WDL	NO SUBSTITUTIONS	4
F9	TRACK LIGHT WITH HEADS	SURFACE	120	TITAN: 18-R20-10-50K	LITHONIA	TRACK: LT SERIES-WH; HEAD: LTC-STPC-#WB-WH	NO SUBSTITUTIONS	4
F10	HIGHBAY LED, 0-10V DIMMING	SUSPENDED	120-277	LED	TITAN LED	32D-BR-2P-56-9-80-SCBA	NO SUBSTITUTIONS	4.5
F10E	HIGHBAY LED, 0-10V DIMMING, W/EMERG. BATTERY PACK	SUSPENDED	120-277	LED	TITAN LED	32D-BR-2P-56-9-80/EM BATTERY-50-LEM05-BB-SCBA	NO SUBSTITUTIONS	4.5
F11	ARCHITECTURAL EXTERIOR WALL MOUNT LED	WALL	120-277	LED-5700K	TITAN LED	12C-8-32-BP-57K-SCBA	NO SUBSTITUTIONS	4.5
F12	ARCHITECTURAL EXTERIOR WALL SCIENCE	WALL	120-277	LED-350LM-4000K	BEGA	33 591-LED-K4-SCBA	NO SUBSTITUTIONS	4.5
F13	AREA POLE LIGHT, SINGLE-HEAD, OCC. SENSOR	POLE (SEE DETAIL)	MULTI-TAP	LED-5000K	TITAN LED	62BR-2P-56-9-80-50K-50/MSOD/SENSOR W/ POLE-BRONZE	NO SUBSTITUTIONS	1.2,3
F14	CANOPY LIGHT	SURFACE	120-277	LED-5000K	TITAN LED	32D-BR-2P-56-6-80/SENSOR-50-MSOD-SENSOR-SCBA	NO SUBSTITUTIONS	4.5
F15	2X2 LAY-IN GRID TROFFER	RECESSED	120-277	TITAN: (4) 17C-2-12-50K	TITAN LED	12-RG22-4L-P	NO SUBSTITUTIONS	4
F15E	2X2 LAY-IN GRID TROFFER, W/ EMERG. BATTERY PACK	RECESSED	120-277	TITAN: (4) 17C-2-12-50K	TITAN LED	12-RG22-4L-PIEM BATTERY-17-LEM05C-BB-4	NO SUBSTITUTIONS	4

LIGHT FIXTURE SCHEDULE NOTES:

- E.C. SHALL FIELD AIM POLE LIGHT HEAD AT NIGHT TO PROVIDE MAXIMUM THROW OF LIGHTING; COORDINATE WITH FIXTURE MFG ON EXACT AIMING ANGLES.
- AS INDICATED ON ELECTRICAL SITE PLAN, POLES SHALL BE PROVIDED WITH 120V, GFCI WEATHERPROOF RECEPTACLE.
- FIXTURE HEAD TO BE PROVIDED WITH OCC. SENSOR, PROGRAM SO THAT FIXTURE DIMS TO 50% OUTPUT THEN TO 100% WHEN OCCUPANCY IS SENSED.
- E.C. SHALL COORDINATE FIXTURE INSTALLATION WITH TITAN LED, INCLUDING INSTALLATION OF LAMPS, LED DRIVER, ETC.
- SCBA (STANDARD-COLOR-BY-ARCHITECT), VERIFY FIXTURE COLOR WITH ARCHITECT PRIOR TO ORDERING.

LIGHTING OCCUPANCY SENSOR SCHEDULE				
TYPE	MFGR.	CATALOG #	DESCRIPTION	NOTES
CEILING SENSORS				
CD2	SENSOR SWITCH	CM PDT 9 R	DUAL-TECHNOLOGY, SMALL MOTION 360 DEGREE COVERAGE, LOW VOLTAGE, W/ISOLATED RELAY	POWER PACK: PP20 (1 PER EVERY 2 SENSORS)
CD5	SENSOR SWITCH	CMR-PDT-10-2P	DUAL-TECHNOLOGY, LINE VOLTAGE, 2-POLE LARGE MOTION, 800W MAX LOAD	
CD6	SENSOR SWITCH	CMR PDT 9	DUAL-TECHNOLOGY, LINE VOLTAGE, SMALL MOTION 800W MAX LOAD	
CD7	SENSOR SWITCH	CMR-PDT-9-2P	DUAL-TECHNOLOGY, LINE VOLTAGE, 2-POLE SMALL MOTION, 800W MAX LOAD	
PCD	SENSOR SWITCH	CM PC ADC	ON/OFF & AUTOMATIC DIMMING PHOTOCELL	POWER PACK: PP20 (1 PER EVERY 2 SENSORS)
WALL SENSORS				
WDD	SENSOR SWITCH	WSX-PDT-D-SA	DUAL-TECHNOLOGY, 0-10V DIMMING, MANUAL ON	COLOR TO MATCH WIRING DEVICES

GENERAL LIGHTING CONTROL NOTES:

- A. PROGRAMMING AND COMMISSIONING OF THE DAYLIGHTING CONTROL SYSTEMS SHALL BE DONE BY FACTORY CERTIFIED PERSONNALL, E.C. IS RESPONSIBLE FOR COORDINATION OF THE COMMISSIONING/PROGRAMING AND SHALL INCLUDE ALL REQUIRED COST IN THE BASE BID. THIS INCLUDES THE DAYLIGHTING CONTROL ZONES IN THE SHOP, WAREHOUSE AND RETAIL AREA.

LIGHTING CONTROL RELAY PANEL SCHEDULE						
PANEL NAME: LCP-M						
MFG: LC&D						
MODEL: GR2432 ENC-SM NE1 / GR2432 INT (##)NCL DTC DV 2VB						
MOUNTING: SURFACE						
RELAY NO.	RELAY POLES	CIRCUIT	VOLTAGE	CIRCUIT DESCRIPTION	CONTROL	NOTES
1	SINGLE	A-2	120V	SITE SIGN	TIMECLOCK	1
2	SINGLE	A-4	120V	SITE SIGN	TIMECLOCK	1
3	SINGLE	A-6	120V	SITE SIGN	TIMECLOCK	1
4	SINGLE	A-8	120V	BLDG SIGN	TIMECLOCK	1
5	DOUBLE	A-10,12	208V	SITE LIGHTING	TIMECLOCK	1
6	DOUBLE	A-14,16	208V	SITE LIGHTING	TIMECLOCK	1
7	SINGLE	A-18	120V	BLDG LIGHTING	TIMECLOCK	1
8	SINGLE	A-20	120V	BLDG LIGHTING	TIMECLOCK	1
9	SINGLE	A-15	120V	SHOP LIGHTING - ROW 1	LV SWITCH	2
10	SINGLE	A-17	120V	SHOP LIGHTING - ROW 2	LV SWITCH	2
11	SINGLE	A-19	120V	SHOP LIGHTING - ROW 3	LV SWITCH	2
12	SINGLE	A-21	120V	SHOP LIGHTING - ROW 4	LV SWITCH	2
13	SINGLE	A-23	120V	SHOP LIGHTING - ROW 5	LV SWITCH	2
14	SINGLE	A-22	120V	WAREHOUSE LTG - ROWS 1,3	LV SWITCH	3
15	SINGLE	A-24	120V	WAREHOUSE LTG - ROWS 2,4	LV SWITCH	3
16	SINGLE	A-26	120V	WAREHOUSE LTG - ROWS 5,7,9	LV SWITCH	3
17	SINGLE	A-28	120V	WAREHOUSE LTG - ROWS 6,8	LV SWITCH	3
18	SINGLE	A-27	120V	EXHAUST FANS - UPPER FLOOR LOCKER ROOMS	TIMECLOCK	1
19	SINGLE	A1-29	120V	HEAT-TRACE	TIMECLOCK	4
20	SINGLE	A1-31	120V	HEAT-TRACE	TIMECLOCK	4
21	SINGLE			SPARE RELAY		
22	SINGLE			SPARE RELAY		
23				SPACE		
24				SPACE		
25				SPACE		
26				SPACE		
27				SPACE		
28				SPACE		
29				SPACE		
30				SPACE		
31				SPACE		
32				SPACE		

Notes:

- RELAY SHALL BE CONTROLLED VIA INTEGRAL ASTRONOMICAL TIMECLOCK, PROGRAM AS DIRECTED BY OWNER.
- PROGRAM SWITCH SO THAT ROWS 1,3,5 ARE CONTROLLED SEPARATELY FROM ROWS 2,4.
- PROGRAM SWITCH SO THAT ROWS 1,3,5,7,9 ARE CONTROLLED SEPARATELY FROM ROWS 2,4,6,8
- RELAY SHALL BE PROGRAMMED FOR 'ON' DURING WINTER MONTHS AND 'OFF' DURING SUMMER MONTHS

GENERAL LIGHTING CONTROL NOTES:

- A. PROGRAMMING AND COMMISSIONING OF THE LIGHTING CONTROL PANEL SHALL BE DONE BY FACTORY CERTIFIED PERSONNALL, E.C. IS RESPONSIBLE FOR COORDINATION OF THE COMMISSIONING/PROGRAMING AND SHALL INCLUDE ALL REQUIRED COST IN THE BASE BID.

nbwarchitects p.c.
 ARCHITECTURE / PLANNING / INTERIORS
 SCOTT L NIELSON, A.I.A. KEVIN R BODILY, A.I.A. JAMES H WYATT, A.I.A.
 900 JOHN OWENS BUILDING P.O. BOX 2732 - IDAHO FALLS, IDAHO 83402-2732
 (208) 326-8773 (208) 326-8785 (208) 326-8785 (208) 326-8785

NEW BUILDING FOR:
KENWORTH SALES CO., INC.
 4224 RUBY VISTA DRIVE
 ELKO, NEVADA 89801
 ELECTRICAL SCHEDULES

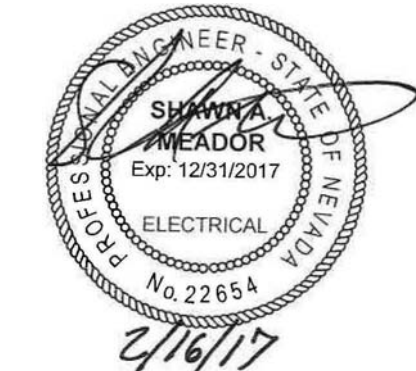
PROJECT:
 SHEET TITLE:

REVISIONS		
No.	Description	Date
2	ADDENDUM#2	3/13/17

PROJECT NO:
 13035
 DATE:
 FEB. 2017
 DRAWN BY:
 MHP
 CHECKED BY:
 SRM

DRAWING NO.:

E5.2



P.E. JOB #1695
IPAYNE
 Engineering Inc.
 1823 E. Center
 Pocatello, Idaho 83201
 tel (208) 232-4439 fax (208) 232-1435
 www.payneengineeringinc.com