

ADDENDUM

Project: Billings Sweet Grass Creek

Project No.: 5011850

Addendum No.: Two

Project Address: 2620 54th Street West, Billings, MT

Date: September 29, 2016

Owner: Corporation of the Presiding Bishop of The Church of Jesus Christ
of Latter-day Saints, a Utah corporation sole

From (Architect): NBW Architects Idaho Falls, Idaho

Instructions to Prospective Bidders:

This Addendum forms a part of the Contract Documents and modifies the original Bidding Documents and/or prior Addenda as noted below. All conditions, requirements, materials and workmanship are to be as described in the Contract Documents unless specifically stated otherwise. This Addendum consists of 1 page(s) and the attached drawing(s), Sheet(s) See below, dated NA.

GENERAL

1. Building Surcharge Material:

The building site has been pre-loaded with a surcharge material. The material utilized is a 1-1/2" minus gravel, suitable for use as base gravel under the site parking lot, drive aisles, and exterior flatwork as well as use in site fill areas. The site contractor is to utilize the surcharge material for site construction. An approximate additional 950 cubic yards of base gravel will be required for the off-site construction of Trail Creek Road. The surcharge material will also be utilized for Trail Creek Road construction. Any excess surcharge material remaining after site construction and construction of Trail Creek Road shall be hauled off-site by the contractor. The estimated surcharge gravel quantity is approximately 9550 cubic yards. See attached sheet C3.0 for reference.

SPECIFICATIONS

2. Section 04 2113 Brick Veneer Masonry, Products. The following manufacturer and brick have been approved for a brick substitute on this project:
- General Shale, Catalina Tudor.

CIVIL

3. The connecting sidewalk between east entries, located directly in front of the building, is to be removed from this project. See attached sketch AD2.1. RE: Sheets C2.0, C3.0, C4.1, C4.2, C4.3, C5.0 & C6.2.

LANDSCAPING

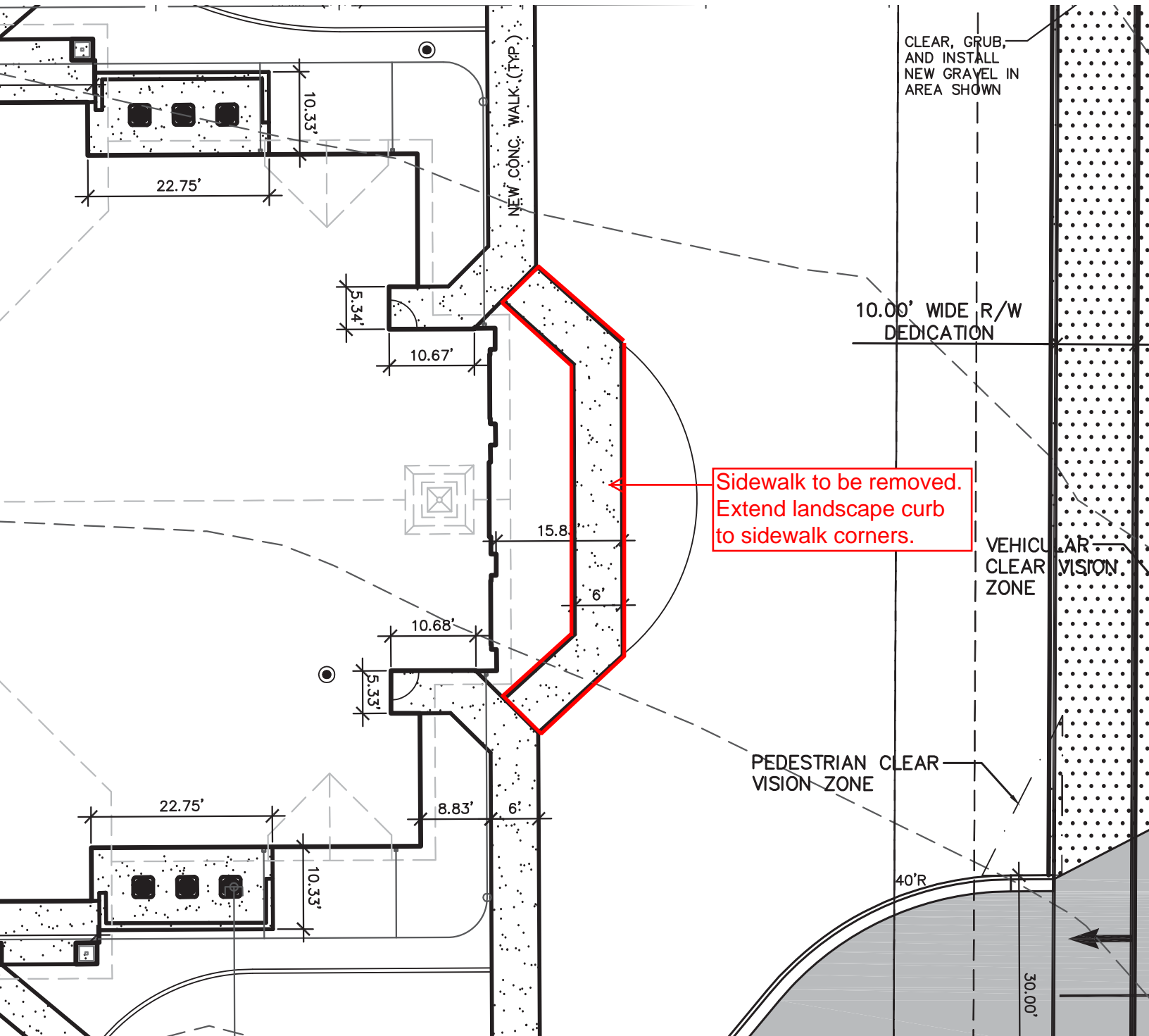
4. Add the following attached Landscape Drawing Sheets to the Bid Set:
- L101 - Mowstrip & Topsoil Placement Plan
 - L102 - Planting Plan
 - L103 - Planting Plan
 - L104 - Irrigation Plan
 - L105 - Irrigation Plan
 - L106 - Planting Details
 - L107 - Irrigation Details
 - L108 - Irrigation Details
 - L109 - Irrigation Details

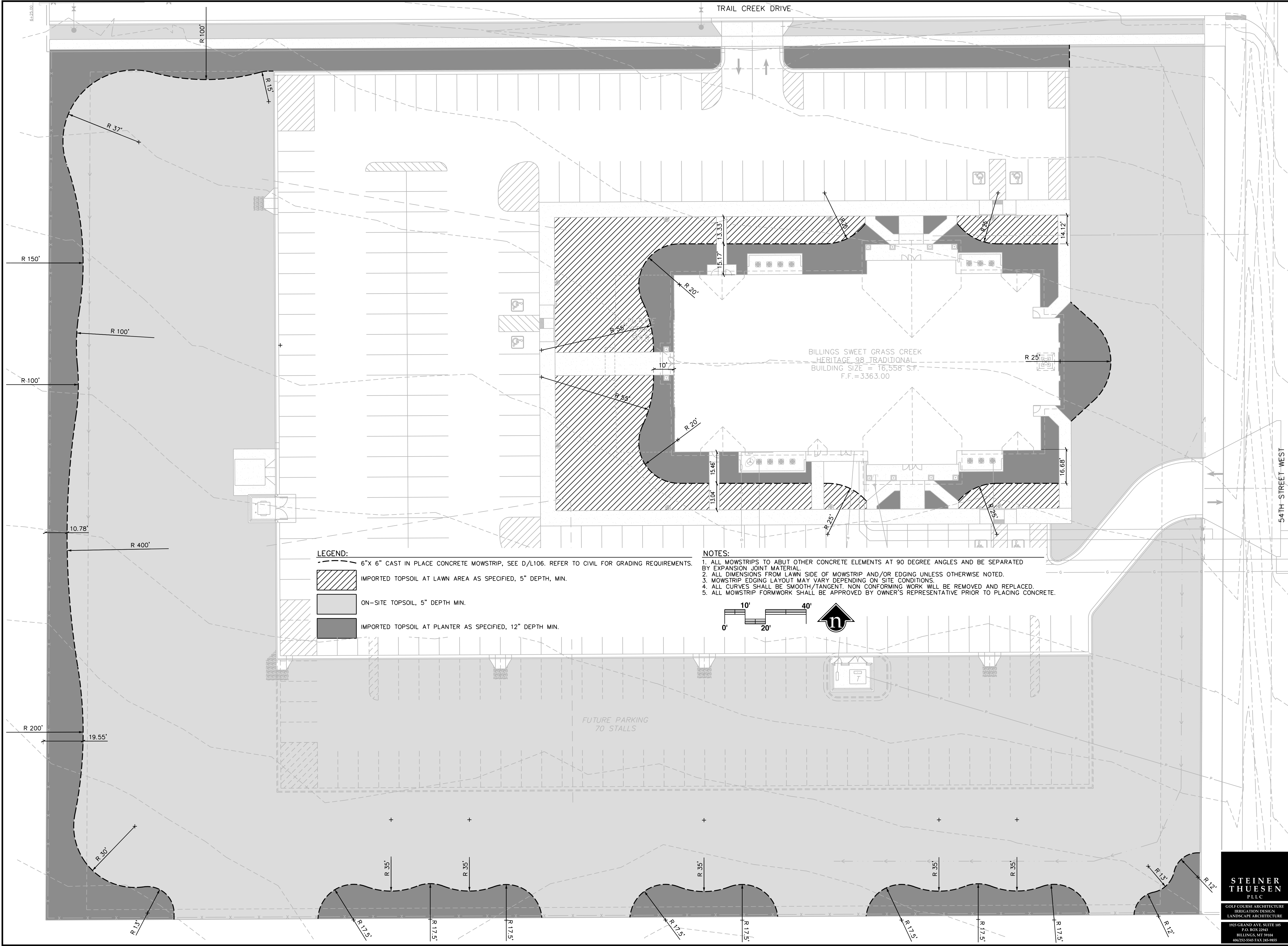
Architectural

5. Remove locks from storage room Door 113A and Door 116A.

End of Addendum

Billings Sweet Grass Creek
Addendum #2
Sidewalk Removal





Architect / Engineer:

n**bw**architects p.a.

ARCHITECTURE, PLANNING, INTERIORS

SCOTT L. NELSON, AIA, KEVIN R. BODDY, AIA, JAMES H. WYATT, AIA,

930 JOHN BURNS PARKWAY P.O. BOX 2212 • 08840 FALLS, IDAHO 83402-2212

(P) 208-522-8779 (F) 208-522-8785 (W) www.nbwarchitects.com

Stamp:

Billings Sweet Grass Creek
Heritage 98
Billings Montana Stake
... Trail Creek Drive
Billings Montana

Project for:

THE CHURCH OF
JESUS CHRIST
OF LATTER-DAY SAINTS

Mark	Date (day)	Description
26 AUG 16	80% SUBMITTAL	
31 AUG 16	90% SUBMITTAL	
29 SEP 16	100% SUBMITTAL	

Project Number:
15047

Plan Series:
HER-TRA-98-20

Property Number:
*** **

Sheet Title:

MOWSTRIP &
TOPSOIL
PLACEMENT
PLAN

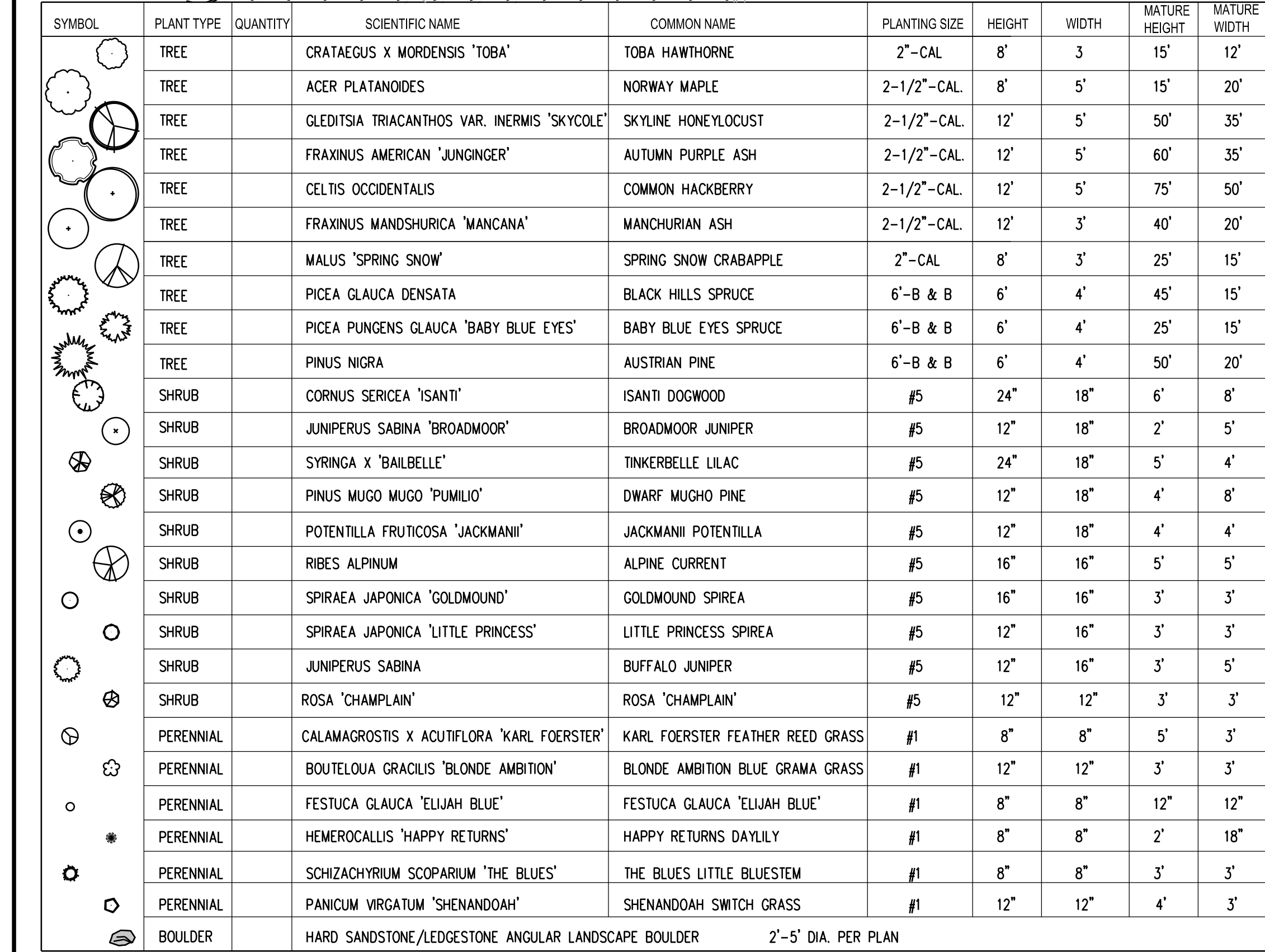
Sheet:

L101

STEINER
THUESEN
PLLC

GOLF COURSE ARCHITECTURE
IRRIGATION DESIGN
LANDSCAPE ARCHITECTURE

1925 GRAND AVE. SUITE 105
P.O. BOX 22943
BILLINGS, MT 59104
(406) 252-5545 FAX 406-965



DESIGN CRITERIA	
CLIMATE	U.S. HARDINESS ZONE 4
ZONING ORDINANCE	CITY OF BILLINGS ARTICLE 27-1100 LANDSCAPING
WATER AVAILABILITY	65 P.S.I. AND 35 G.P.M. AFTER BACKFLOW DEVICE
SOIL TYPE	EXISTING - CLAY LOAM/IMPORT ADDITIONAL AS SPECIFIED
SLOPES	1-5%
WIND	SOUTHWEST
SETBACKS/EASEMENT	MINOR ATERIAL SETBACKS: PARKING - 60', BUILDING - 70', FRONT BUILDING SETBACK - 20' (SEE CIVIL)
MICROCLIMATES	SHADE ON NORTH SIDE OF BUILDING
SOIL PH	EXISTING - 7.8, IMPORTED TBD
LAWN AREA PERCENTAGE	84%
UNDEVELOPED PROPERTY	NONE
IRRIGATION SYSTEM	YES - AUTOMATIC

PLANT COVERAGE				
	SHRUBS—MATURE COVERAGE	ACTUAL %	TREES—MATURE COVERAGE	ACTUAL #
STREET FRONTAGE	40%–65%	50%	FRAME BUILDING	9
PRIMARY ENTRIES	35%–70%	40%	FRAME ENTRY	6
BUILDING PERIMETER	25%–45%	45%	ACCENT BUILDING	12
PERIMETER	5%–15%	15%	SCREEN LOT	46

Topographic profile of a road section. The profile shows a road with a 10' high embankment on the left, a 20' deep ditch in the middle, and a 40' high embankment on the right. A north arrow points upwards.

**STEINER
THUSEN
PLLC**

**GOLF COURSE ARCHITECTURE
IRRIGATION DESIGN
LANDSCAPE ARCHITECTURE**

**1925 GRAND AVE. SUITE 105
P.O. BOX 22943
BILLINGS, MT 59104
406/252-5545 FAX 245-9835**



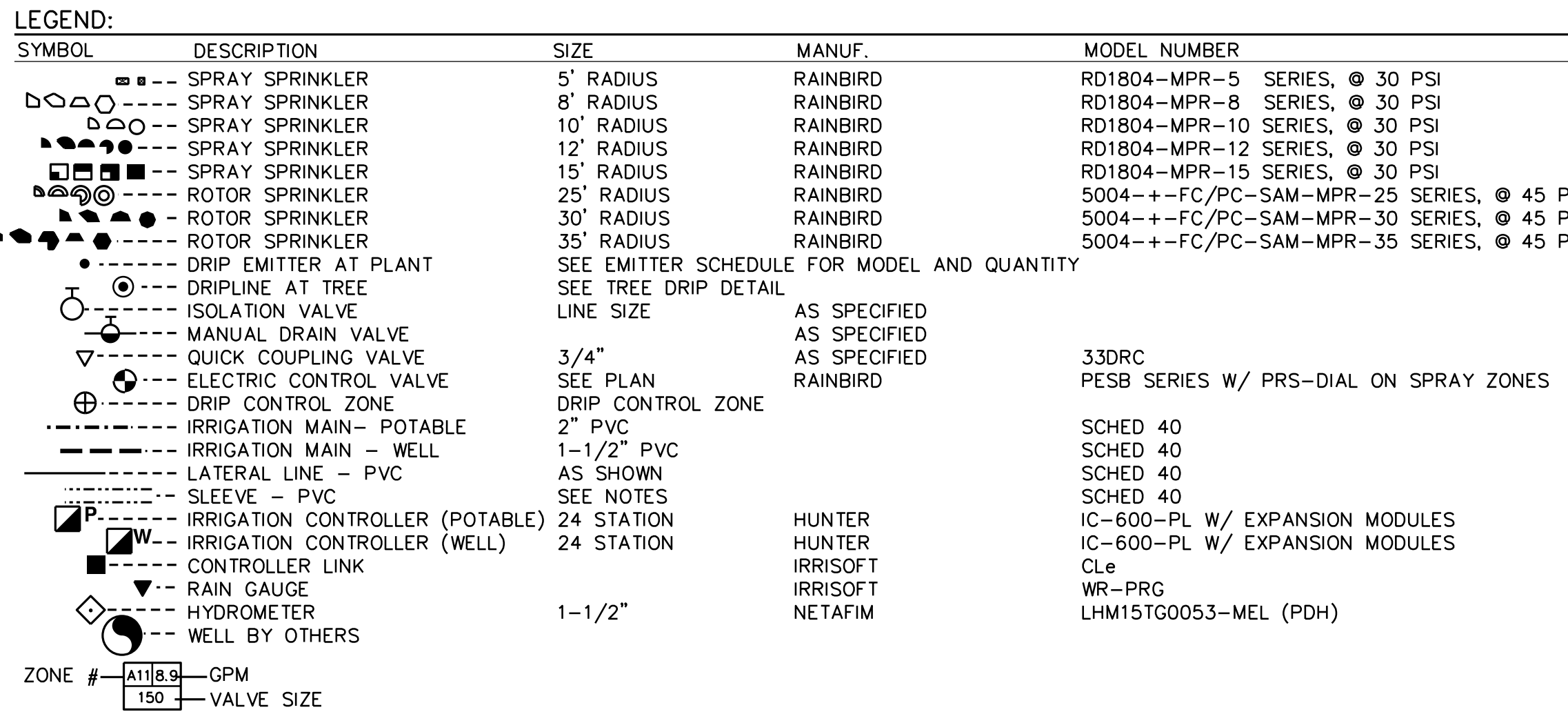
Sheet:

L103

**STEINER
THUESEN
PLLC**

**GOLF COURSE ARCHITECTURE
IRRIGATION DESIGN
LANDSCAPE ARCHITECTURE**

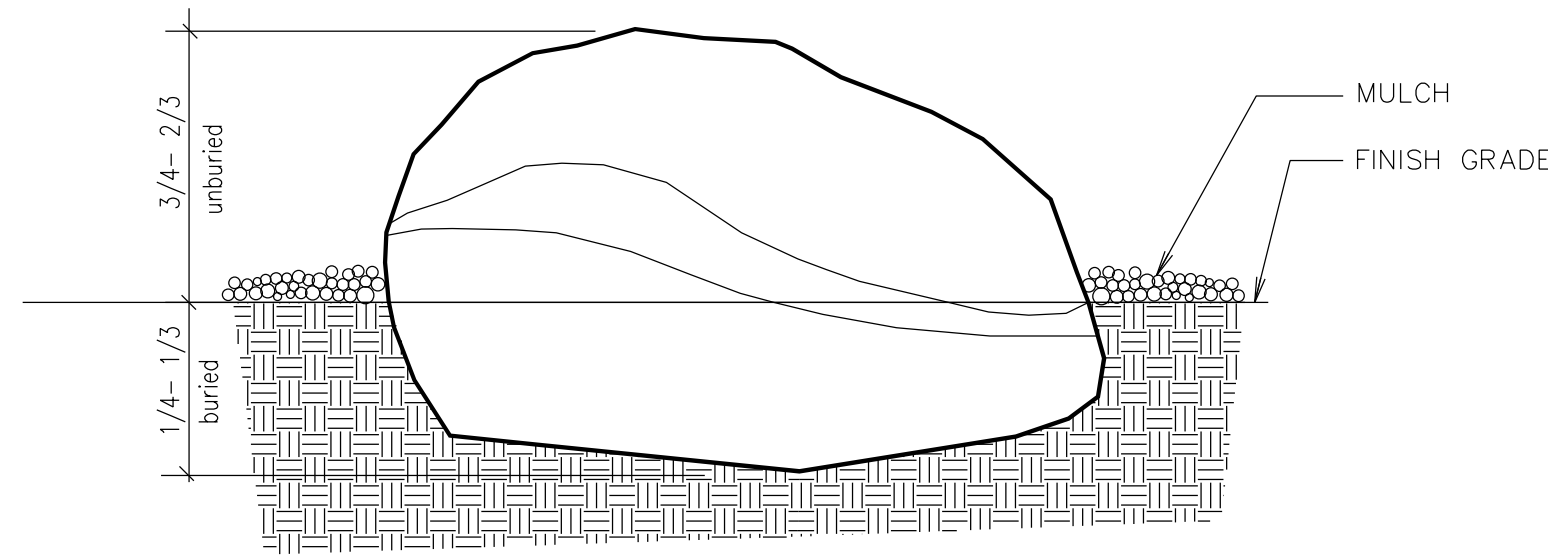
**1925 GRAND AVE. SUITE 105
P.O. BOX 22843
BILLINGS, MT 59104
406/252-5545 FAX 245-9855**



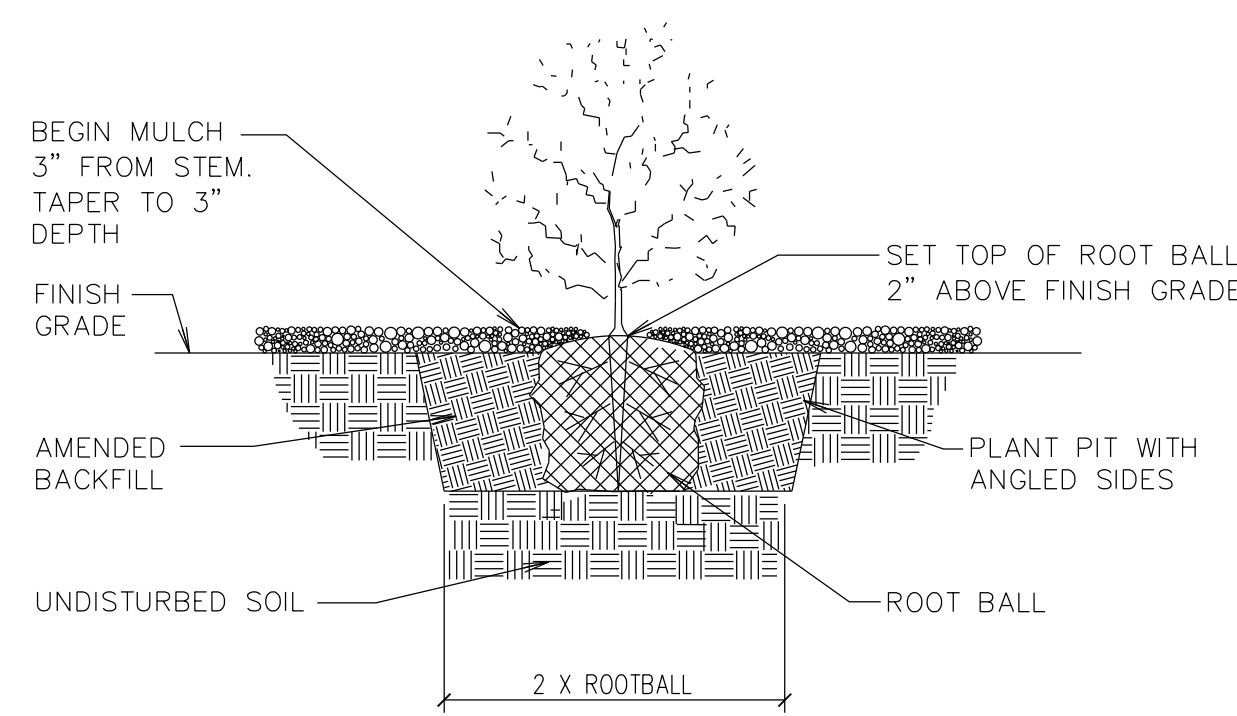
1. VERIFY LOCATION OF ALL UTILITIES PRIOR TO BEGINNING WORK. ANY DAMAGE TO EXISTING UTILITIES ON SITE OR ADJACENT PROPERTY SHALL BE CONTRACTOR'S RESPONSIBILITY. COORDINATE ALL EXCAVATION WORK WITH GENERAL CONTRACTOR.
2. IRRIGATION SYSTEM IS DIFFICULT TO INSTALL IN NATURE. FIELD ADJUSTMENT OF IRRIGATION COMPONENTS MAY BE NECESSARY TO AVOID CONTACTS WITH EXISTING UTILITIES. REASONABLE CHANGES IN PIPE LAYOUT MAY BE MADE BY THE CONTRACTOR WITH THE ADVANCED APPROVAL OF THE OWNER'S REPRESENTATIVE.
3. PIPING AND EQUIPMENT SHOWN IN PAVED AREAS SHALL BE INSTALLED IN ADJACENT TURF OR PLANTER AREA AS SPECIFIED. PIPING SHALL BE INSTALLED WITHIN 12" OF THE LINE OF THE TURF OR PLANTER AREA. BE SURE TO PROTECT PROPERTY LINE.
4. SCHEDULE 40 PVC SLEEVES ARE REQUIRED UNDER ALL HARD SURFACES, EXISTING AND PROPOSED. LOCATION AND NUMBER OF SLEEVES IS THE RESPONSIBILITY OF THE CONTRACTOR FOR INSTALLATION OF THE IRRIGATION SYSTEM AS SHOWN. ALL PIPE SLEEVES TO BE 2 PIPE SIZES LARGER THAN PIPE TO BE INSTALLED THROUGH SLEEVE. PROVIDE SEPARATE SLEEVES FOR EACH PIPE.
5. CONTRACTOR SHALL PROVIDE ALL DEVICES, WIRING AND PROGRAMMING FOR A COMPLETE OPERATIONAL SYSTEM.
6. LOCATIONS OF MAINLINE DRAINS MAY VARY. ACTUAL LOCATIONS SHALL BE IN ALL LOW SPOTS ALONG THE MAINLINE.
7. MAINTAIN AN ACCURATE, CURRENT AS-BUILT ON THE JOB AT ALL TIMES.
8. ZONES WITH FLOWS THROUGH 20 GPM TO HAVE 1" CONTROL VALVES. ZONES WITH FLOWS 21 THROUGH 50 GPM TO HAVE 1-1/2" CONTROL VALVES.
9. SEAL ALL PENETRATIONS.
10. LOCATE ALL MAINLINE VALVES TO BE MORE THAN 12" FROM CURB OR SIDEWALK FOR EASY ACCESS AND MAINTENANCE.
11. VALVE BOX LIDS LOCATED IN TURF AREAS SHALL BE GREEN; LIDS LOCATED IN SHRUB AREAS SHALL BE TAN.
12. ADJUST LATERAL RUNS IN PLANTERS AS REQUIRED TO ACCOMMODATE PLANTINGS, ETC. REFER TO DETAILS FOR EMITTER SPECIFICATIONS.
13. TREES AND SHRUBS/PERENNIALS TO BE ZONED SEPARATELY AS SHOWN.
14. THE POTABLE WATER IRRIGATION SYSTEM IS BASED UPON AN AVAILABLE STATIC PRESSURE OF 59 PSI MINIMUM DIRECTLY DOWNSTREAM OF BACKFLOW DEVICE AND 35 G.P.M. PRIOR TO CONSTRUCTION. CONFIRM STATIC PRESSURE AND SIZE OF P.O.C.
15. THE WELL SUPPLIED IRRIGATION SYSTEM IS BASED UPON AN AVAILABLE PRESSURE OF 45 PSI MINIMUM AT THE FURTHEST ROTOR HEAD AND 20 G.P.M. PRIOR TO CONSTRUCTION. CONFIRM PRESSURE AND SIZE OF P.O.C. PRIOR TO CONSTRUCTION.
16. REFER TO DETAIL SHEET AND SPECIFICATIONS FOR ADDITIONAL INFORMATION.

- ① MOUNT CONTROLLERS ON WALL INSIDE OF SHED.
- ② CONNECT TO 1-1/2" SUPPLY LINE, COORDINATE W/ MECHANICAL.
- ③ QUICK COUPLER WITH 4' GALVANIZED PIPE AS SPECIFIED.
- ④ ROUTE CONTROL AND COMM WIRES IN 2-1/2" CONDUIT FROM CONTROLLER ACROSS PARKING LOT TO MAINLINE. END CONDUIT IN VALVE BOX AT MAINLINE. ROUTE WIRE TO CONTROL VALVES/HYDROMETER (CONTROL & COMM) ALONG MAINLINE AS DETAILED.
- ⑤ ROUTE CONTROL AND COMM WIRES IN 2-1/2" CONDUIT FROM CONTROLLER TO MAINLINE. ROUTE WIRE TO CONTROL VALVES/HYDROMETER (CONTROL & COMM) ALONG MAINLINE AS DETAILED.
- ⑥ INSTALL RAIN GAUGE ON EDGE OF ROOF, RUN WIRES TO CONTROLLER LINK IN CONDUIT. CONCEAL IN WALL.
- ⑦ 1-1/2" MAINLINE, CONNECT TO WELL AT PITLESS ADAPTER. STUB OUT OF PITLESS ADAPTER WITH DI NIPPLE, 18" LENGTH MIN.
- ⑧ WELL BY OTHERS: PROVIDE PUMP, MOTOR, VFD CONTROLS, AND ALL OTHER EQUIPMENT NECESSARY FOR A COMPLETE OPERATIONAL SYSTEM. PUMP TO PROVIDE 35 GPM @ 100 PSI MIN. AT PUMP DISCHARGE. DYNAMIC WATER DEPTH IS ESTIMATED AT 50' BELOW SURFACE. PROVIDE FILTRATION /SAND SEPARATOR AS REQUIRED TO SUPPLY "SAND FREE" WATER. FILTRATION EQUIPMENT TO BE DESIGNED TO PROVIDE BY ACCESS AND BE IN A STAINLESS STEEL ENCLOSURE OVER CONCRETE. PROVIDE SUBMITTAL INFORMATION FOR ALL PUMP AND FILTRATION EQUIPMENT.
- ⑨ INSTALL MAINLINE SOUTH OF SIDEWALK.

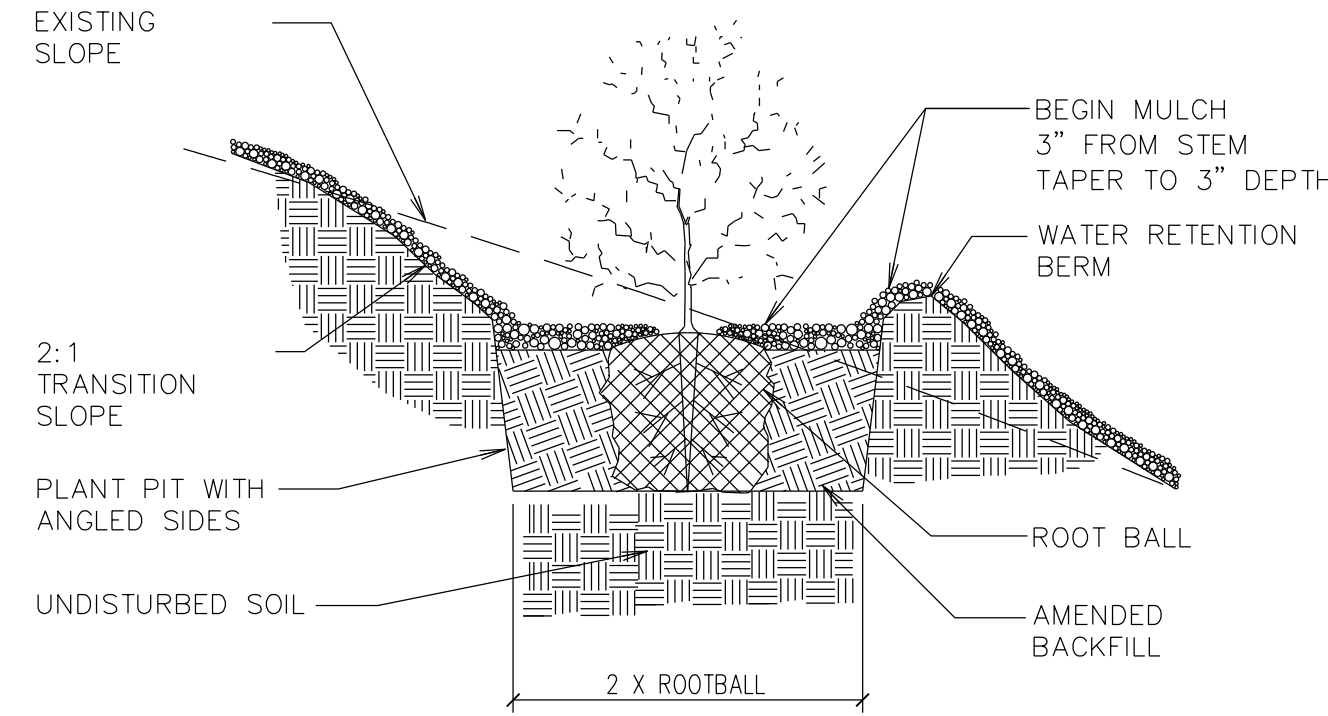
PLANT	NO. OF EMITTERS	GPH MODEL NO.
TOBA HAWTHORNE	SEE TREE DRIP DETAIL	
NORWAY MAPLE	SEE TREE DRIP DETAIL	
SKYLINE HONEYLOCUST	SEE TREE DRIP DETAIL	
AUTUMN PURPLE ASH	SEE TREE DRIP DETAIL	
COMMON HACKBERRY	SEE TREE DRIP DETAIL	
MANCHURIAN ASH	SEE TREE DRIP DETAIL	
SPRING SNOW CRABAPPLE	SEE TREE DRIP DETAIL	
BLACK HILLS SPRUCE	SEE TREE DRIP DETAIL	
BABY BLUE EYES SPRUCE	SEE TREE DRIP DETAIL	
AUSTRIAN PINE	SEE TREE DRIP DETAIL	
ISANTI DOGWOOD	1	GPSTCV4 (YELLOW)
BROADMOOR JUNIPER	1	GPSTCV4 (YELLOW)
TINKERBELLE LILAC	1	GPSTCV4 (YELLOW)
DWARF MUGHO PINE	1	GPSTCV4 (YELLOW)
JACKMANII POTENTILLA	1	GPSTCV2 (GREEN)
ALPINE CURRENT	1	GPSTCV4 (YELLOW)
GOLDMOUND SPIREA	1	GPSTCV2 (GREEN)
LITTLE PRINCESS SPIREA	1	GPSTCV2 (GREEN)
BUFFALO JUNIPER	1	GPSTCV4 (YELLOW)
ROSA 'CHAMPLAIN'	1	GPSTCV2 (GREEN)
KARL FOERSTER FEATHER REED GRASS	1	GPSTCV1 (BLACK)
BLONDE AMBITION BLUE GRAMA GRASS	1	GPSTCV1 (BLACK)
FESTUCA GLAUCA 'ELIJAH BLUE'	1	GPSTCV05 (BROWN)
HAPPY RETURNS DAYLILY	1	GPSTCV05 (BROWN)
THE BLUES LITTLE BLUESTEM	1	GPSTCV2 (GREEN)
SHENANDOAH SWITCH GRASS	1	GPSTCV2 (GREEN)



A BOULDER PLACEMENT DETAIL
NOT TO SCALE

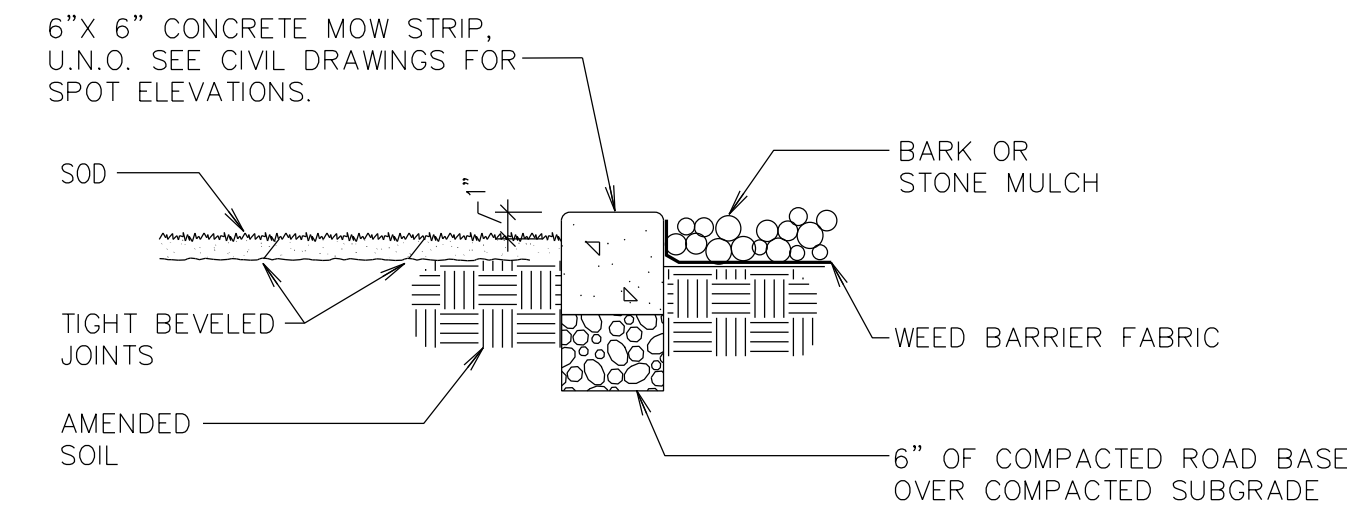


B SHRUB PLANTING DETAIL
NOT TO SCALE

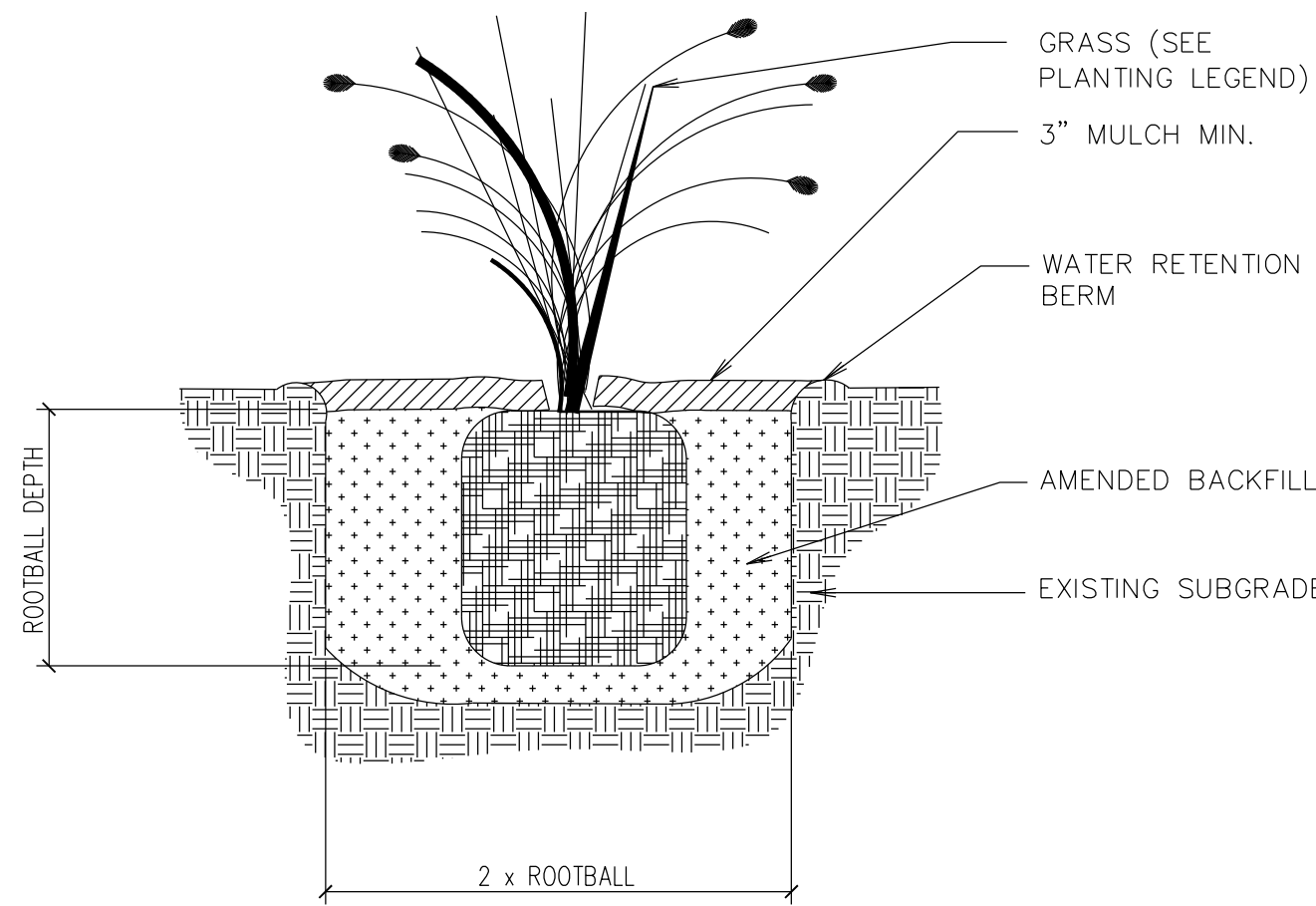


C SLOPE PLANTING
NOT TO SCALE

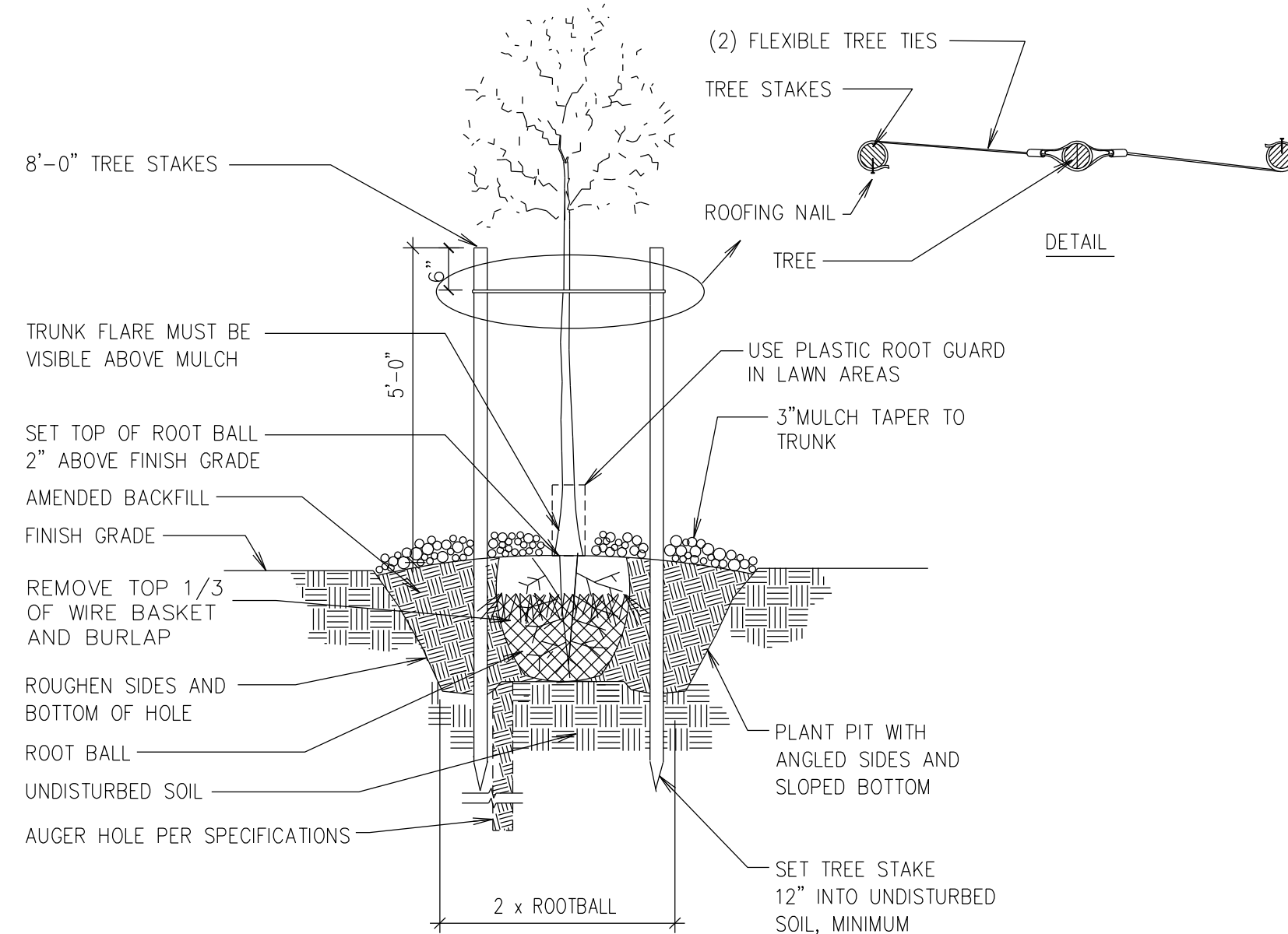
- NOTES:
1. MOW STRIP TO BE CAST-IN-PLACE AND POURED USING TYPICAL WEIGHT STRUCTURAL CONCRETE.
 2. CONTRACTOR TO ENSURE POSITIVE DRAINAGE AROUND MOW STRIPS.
 3. MAXIMUM 1/2" WIDTH VARIATION.
 4. PRECISELY FOLLOW LAYOUT AS SHOWN ON MOW STRIP/EDGING DIMENSION PLAN.
 5. RAISE THE LAWN GRADE 1" WHEN SEEDING.



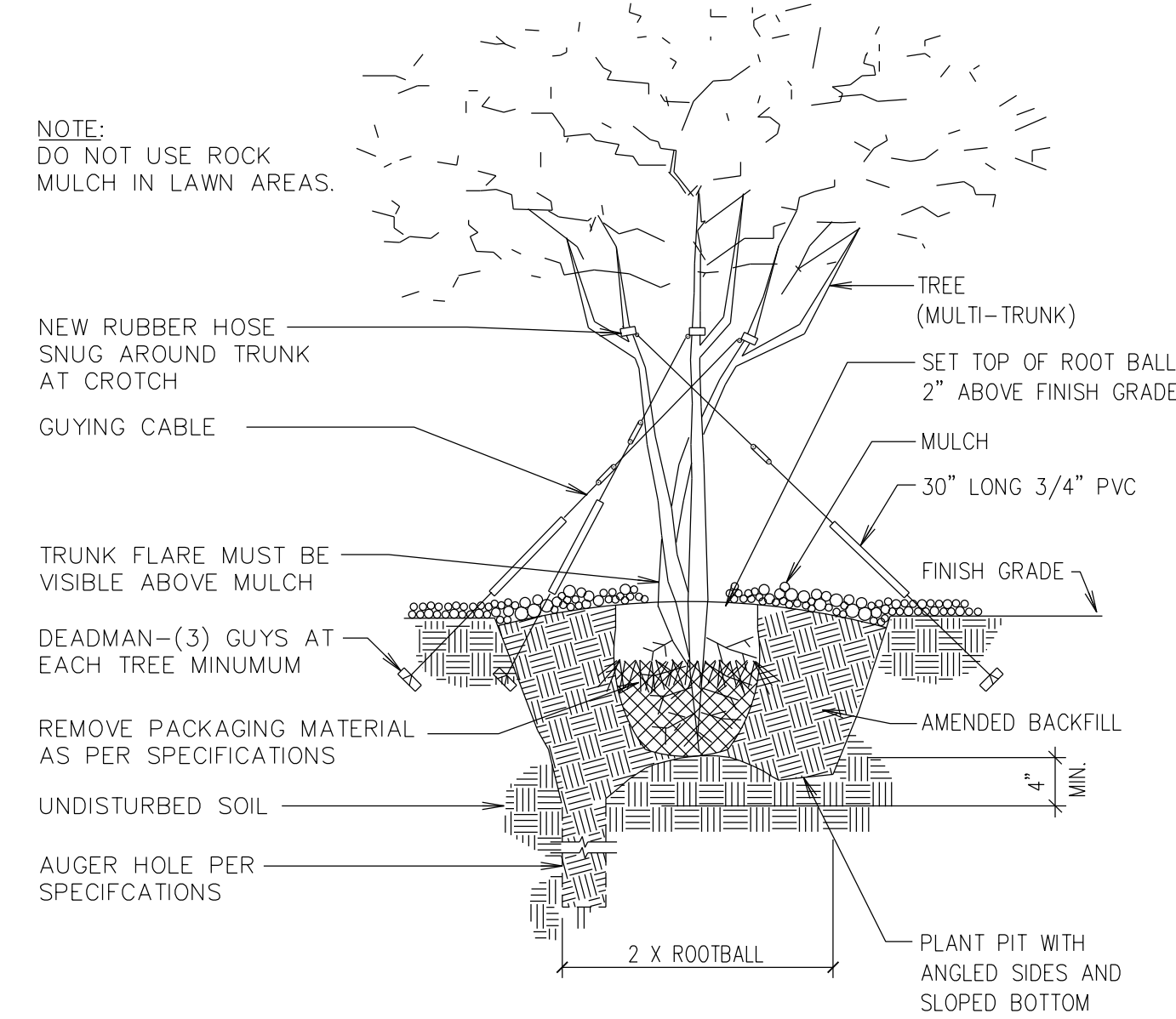
D CONCRETE MOW STRIP
NOT TO SCALE



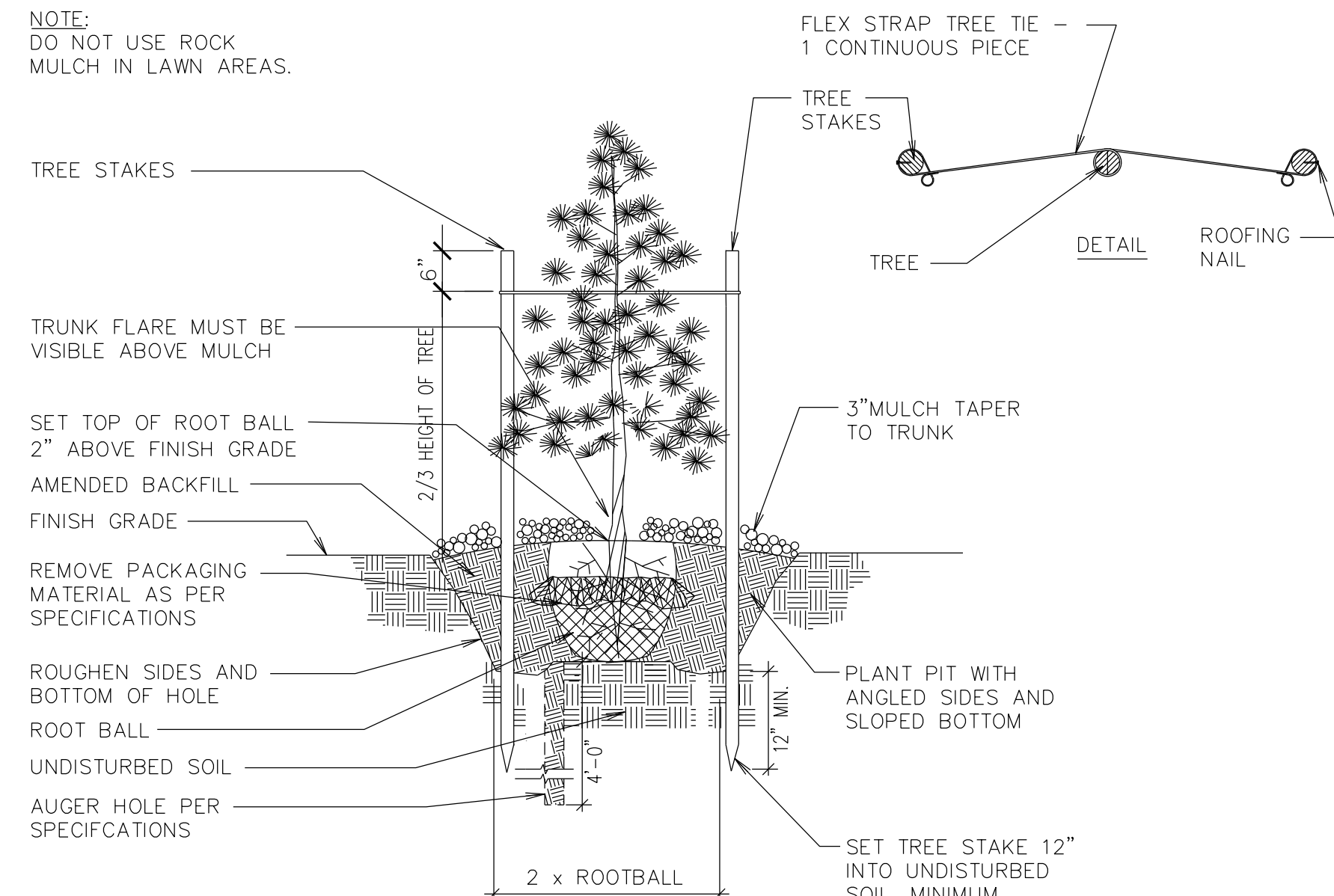
E ORNAMENTAL GRASSES PLANTING
NOT TO SCALE



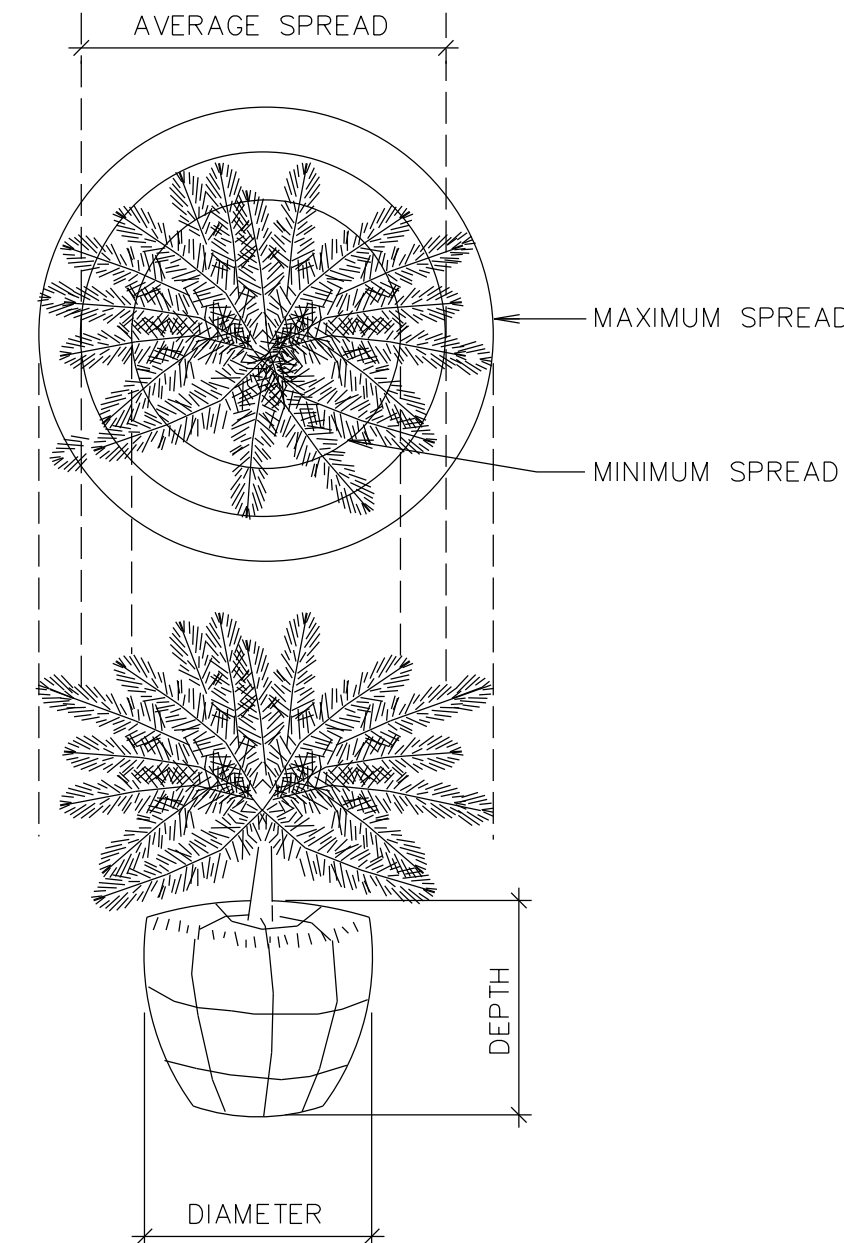
F TREE PLANTING AND STAKING
NOT TO SCALE



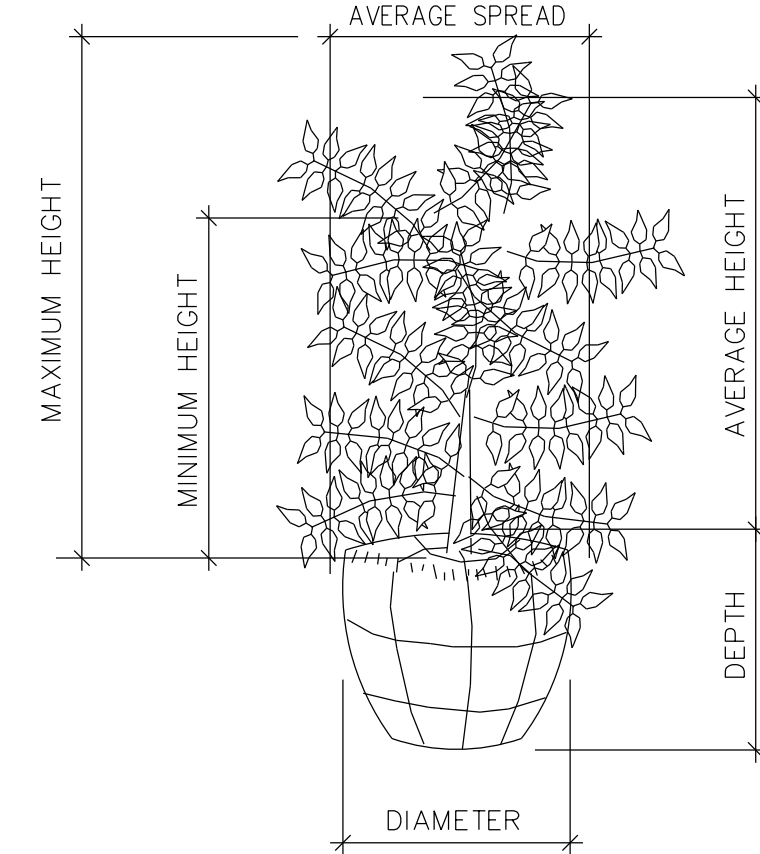
G TREE GUYING (MULTI-TRUNK TREE)
NOT TO SCALE



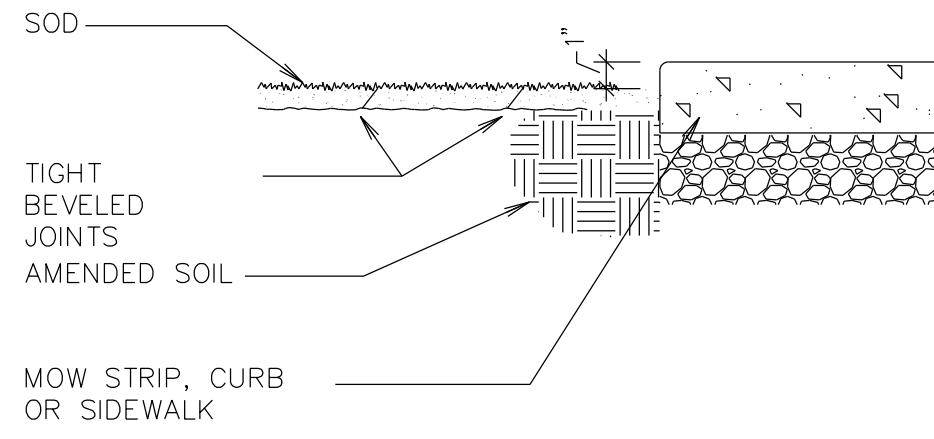
H CONIFER PLANTING AND STAKING
NOT TO SCALE



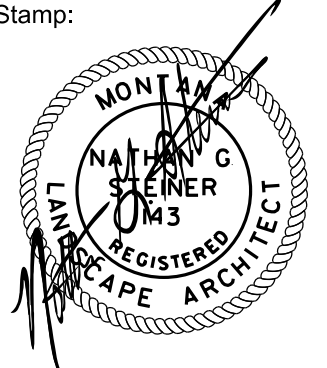
I TYPICAL MEASUREMENT FOR PROSTRATE TYPE PLANTS
NOT TO SCALE



J TYPICAL MEASUREMENT FOR BROAD UPRIGHT TYPE
NOT TO SCALE



K SOD INSTALLATION
NOT TO SCALE



Billings Sweet Grass Creek
Heritage 98
Billings Montana Stake
... Trail Creek Drive
Billings Montana

Project for:
THE CHURCH OF JESUS CHRIST OF LATTER-DAY SAINTS

80% SUBMITTAL	90% SUBMITTAL	100% SUBMITTAL	Description
26 AUG 16	31 AUG 16	29 SEP 16	Date (day)

Project Number:
15047
Plan Series:
HER-TRA-98-20
Property Number:
*** **

Sheet Title:
PLANTING DETAILS

Sheet:
L106



NOT TO SCALE



NEW F
NOT TO SCALE



© EXIST.
NOT TO SCALE



NOT TO SCALE



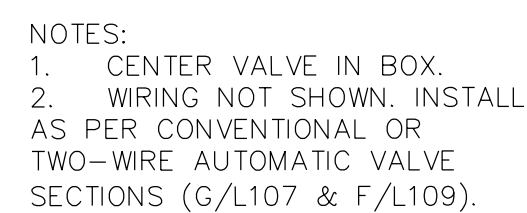
NOT TO SCALE

- [illegible]

CONVE


-
- Diagram illustrating a 6-inch CMU wall section. The wall is composed of 6-inch CMU blocks (6"x8"x16"). The diagram shows a cross-section of the wall with standard valve boxes installed. The valve boxes are labeled "STANDARD VALVE BOX" and the CMU blocks are labeled "6\" CMU (6\"x8\"x16\"".

NOT TO SCALE



NOT TO SCALE

Stamp:



Project for:
**CHURCH
S CH
TER-DAY S**

Mark	Date (MM/DD)	Description
	-	-
	-	-
	-	-
	-	-
	29 SEP 16	100% SUBMITTAL
	31 AUG 16	90% SUBMITTAL
	26 AUG 16	80% SUBMITTAL

Sheet Title:

**IRRIGATION
DETAILS**

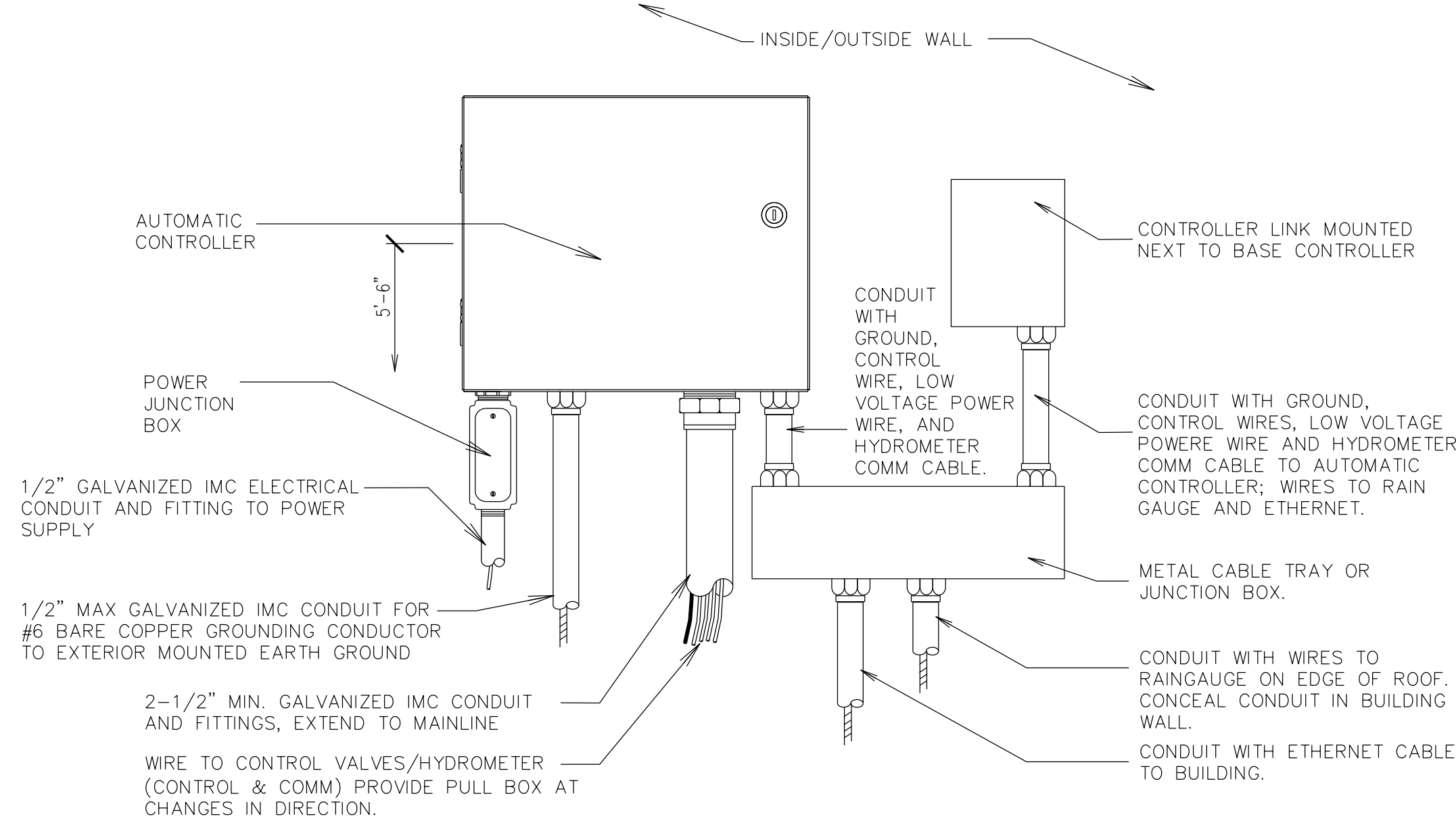
Sheet:

L107

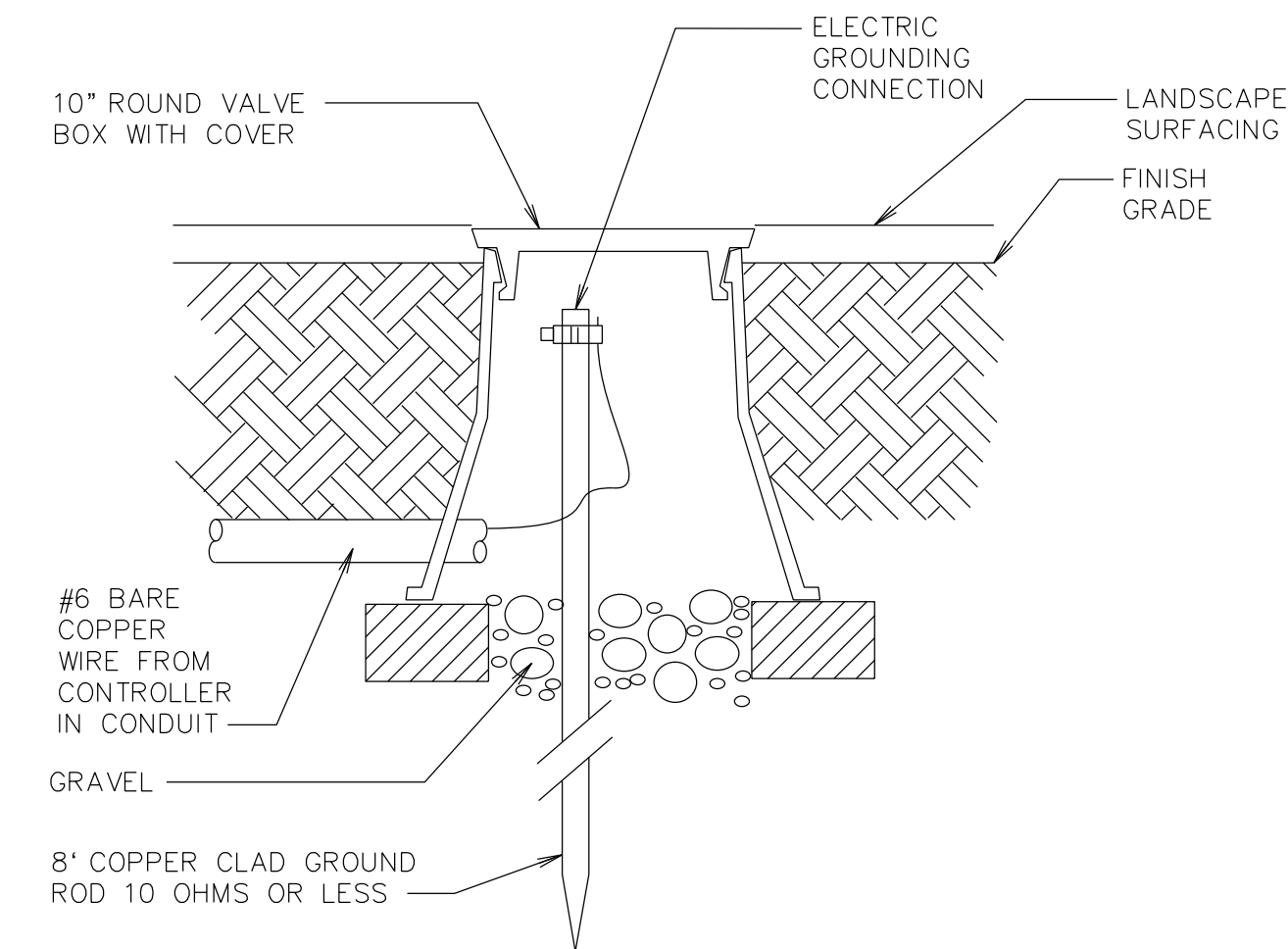
Diagram illustrating the Smart Irrigation Controller Conduit Run Detail. The diagram shows a vertical conduit run from the floor to the ceiling, with a horizontal section extending to the left. Key components and dimensions include:

- SMART IRRIGATION CONTROLLERS**: Located at the top of the vertical run.
- THREADED CONNECTOR TO BOTTOM OF CONTROLLER**: Connects the controller to the conduit.
- METAL ELECTRICAL JUNCTION BOX BY ELECTRICAL CONTRACTOR**: Located on the vertical run, 5'-6" below the controller.
- SURGE SUPPRESSOR WHEN SPECIFIED**: Located on the vertical run, below the junction box.
- FINISH GRADE**: Indicated by a dashed line on the left side.
- FLOOR**: Indicated by a dashed line on the right side.
- 18"**: Vertical dimension from the floor to the finish grade.
- 12"**: Horizontal dimension from the wall to the start of the sweep elbow.
- GALVANIZED IMC CONDUIT LOCATED NEXT TO WALL**: The vertical section of the conduit.
- GALVANIZED IMC CONDUIT SWEEP ELBOW, 12" RADIUS MIN.**: The curved section of the conduit.
- EXTEND CONDUIT TO MAINLINE. PROVIDE PULL BOX AT CHANGES IN DIRECTION.**: Instruction for the horizontal section of the conduit.
- PROVIDE ADDITIONAL CONDUITS AS REQUIRED, SEE SMART CONTROLLER DETAIL.**: Instruction for additional conduits.

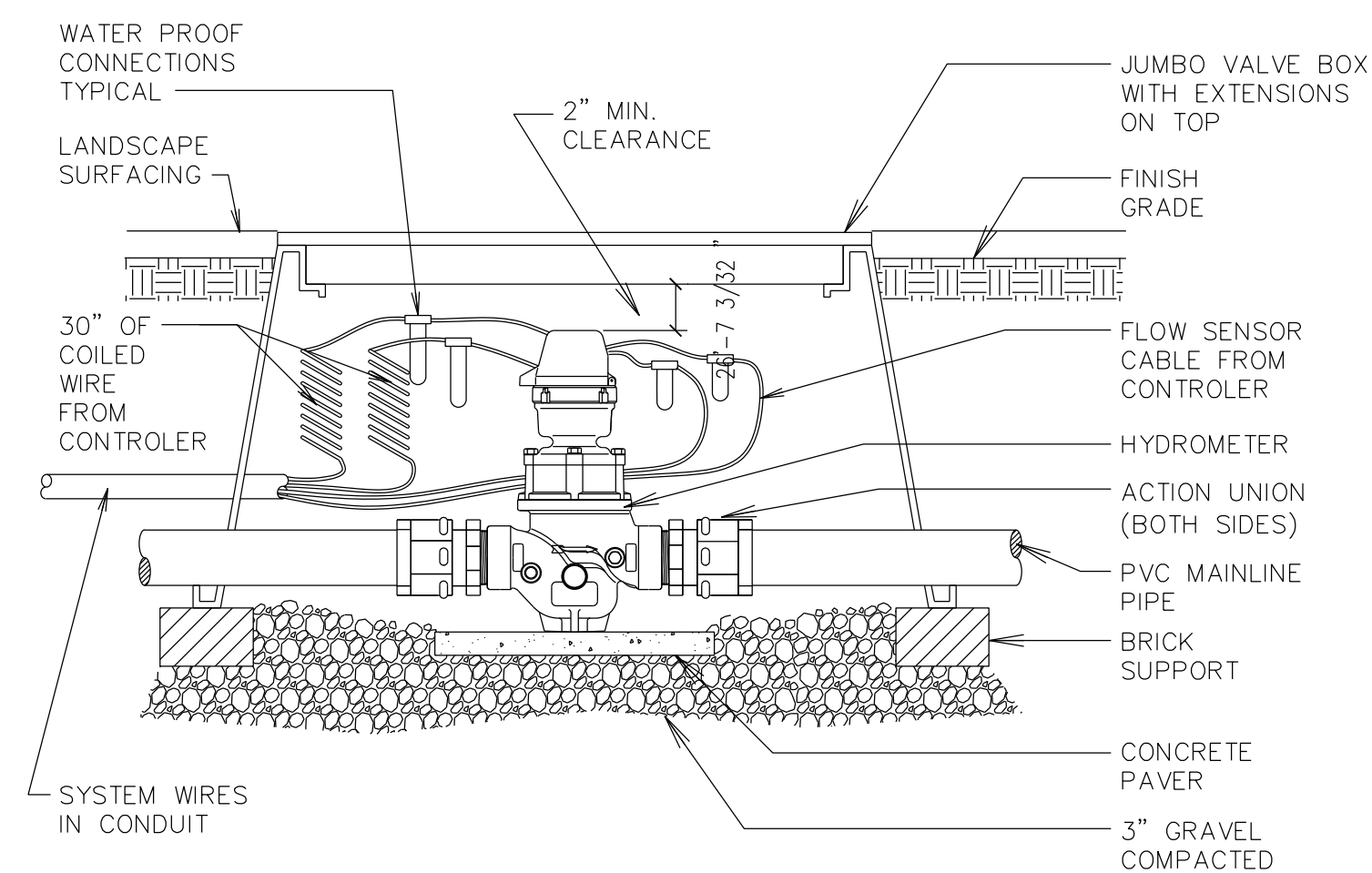
IRRIGATION
NOT TO SCALE



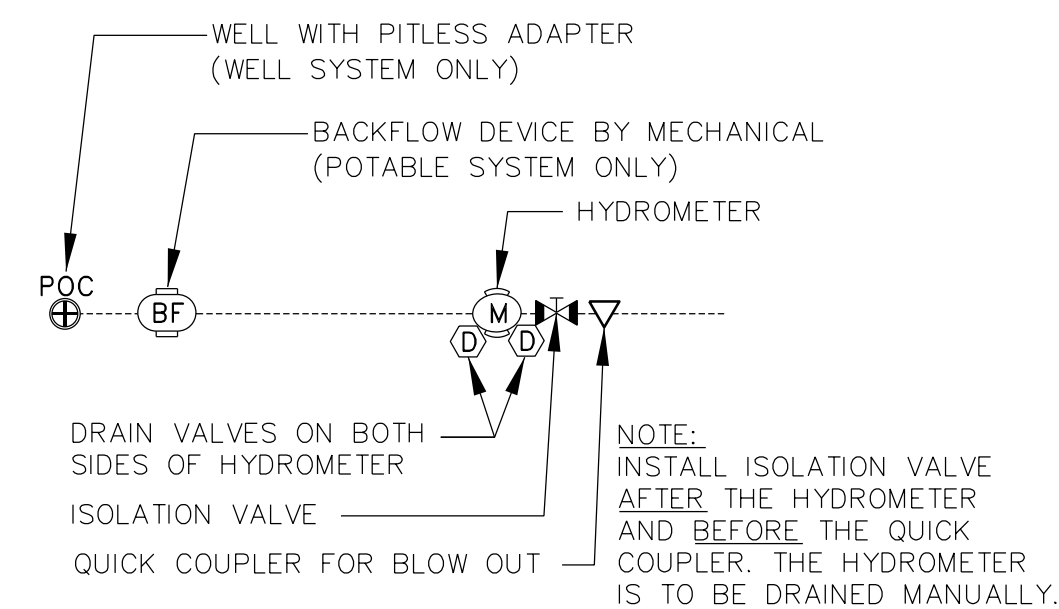
(B) SMART
NOT TO SCALE



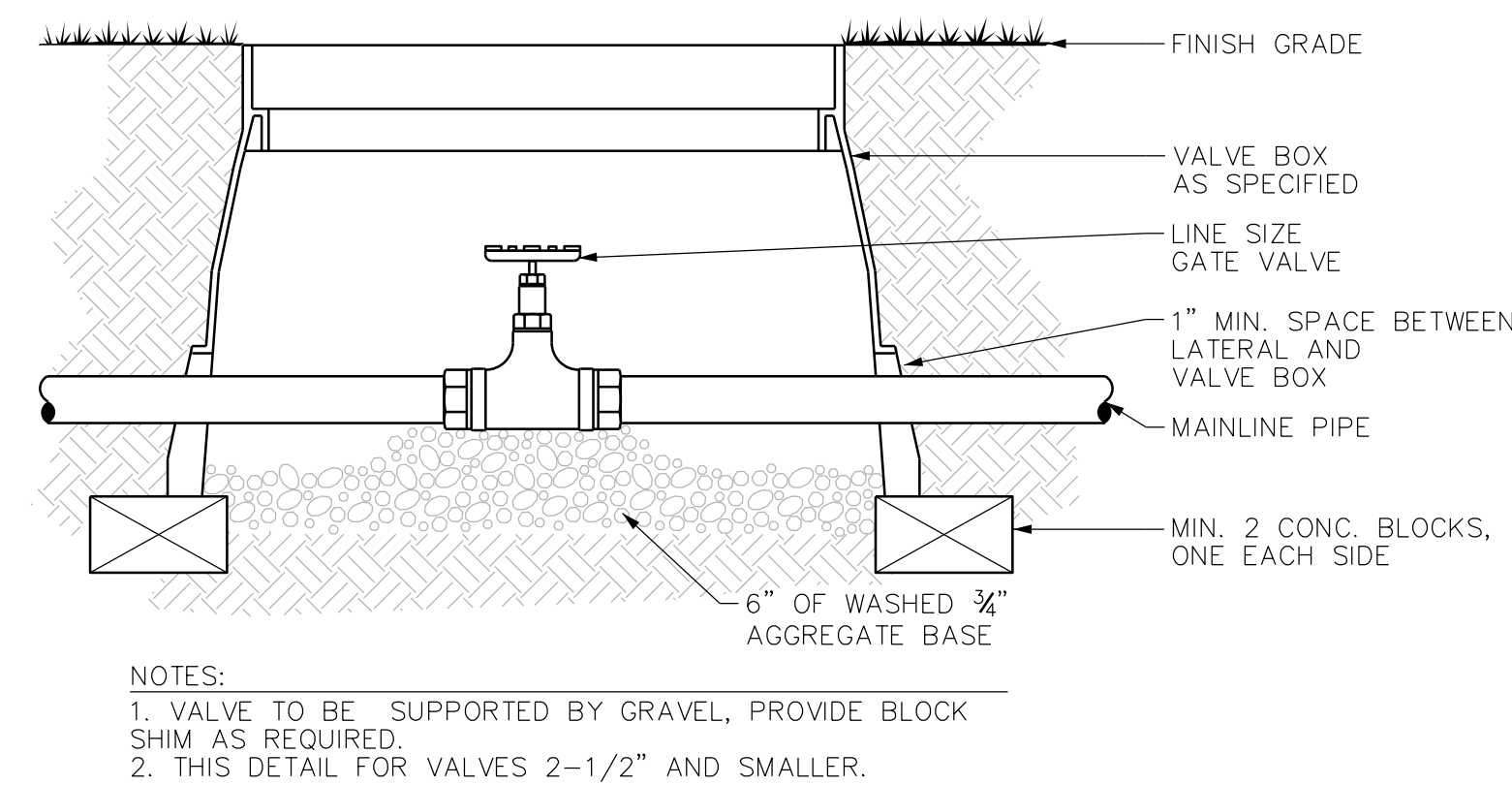
© LIGHT NOT TO SCALE



HYDRO
NOT TO SCALE




POC S
NOT TO SCALE



MANU
NOT TO SCALE

Stamp:



Billings Sweet Grass Creek
Heritage 98
Billings Montana Stake
... Trail Creek Drive
Billings Montana

Project for:

THE CHURCH OF JESUS CHRIST OF LATTER-DAY SAINTS

Mark	Date (MM/YY)	Description
	26 AUG 16	80% SUBMITTAL
	31 AUG 16	90% SUBMITTAL
	29 SEP 16	100% SUBMITTAL
	" "	
	" "	
	" "	
	" "	

Project Number: 15047
Plan Series: HER-TRA-98-20
Property Number: *** **

Sheet Title:

**IRRIGATION
DETAILS**

Sheet:
L108

1925 GRAND AVE. SUITE 105
P.O. BOX 22943
BILLINGS, MT 59104
406/652-5545 FAX 406/652-0888

