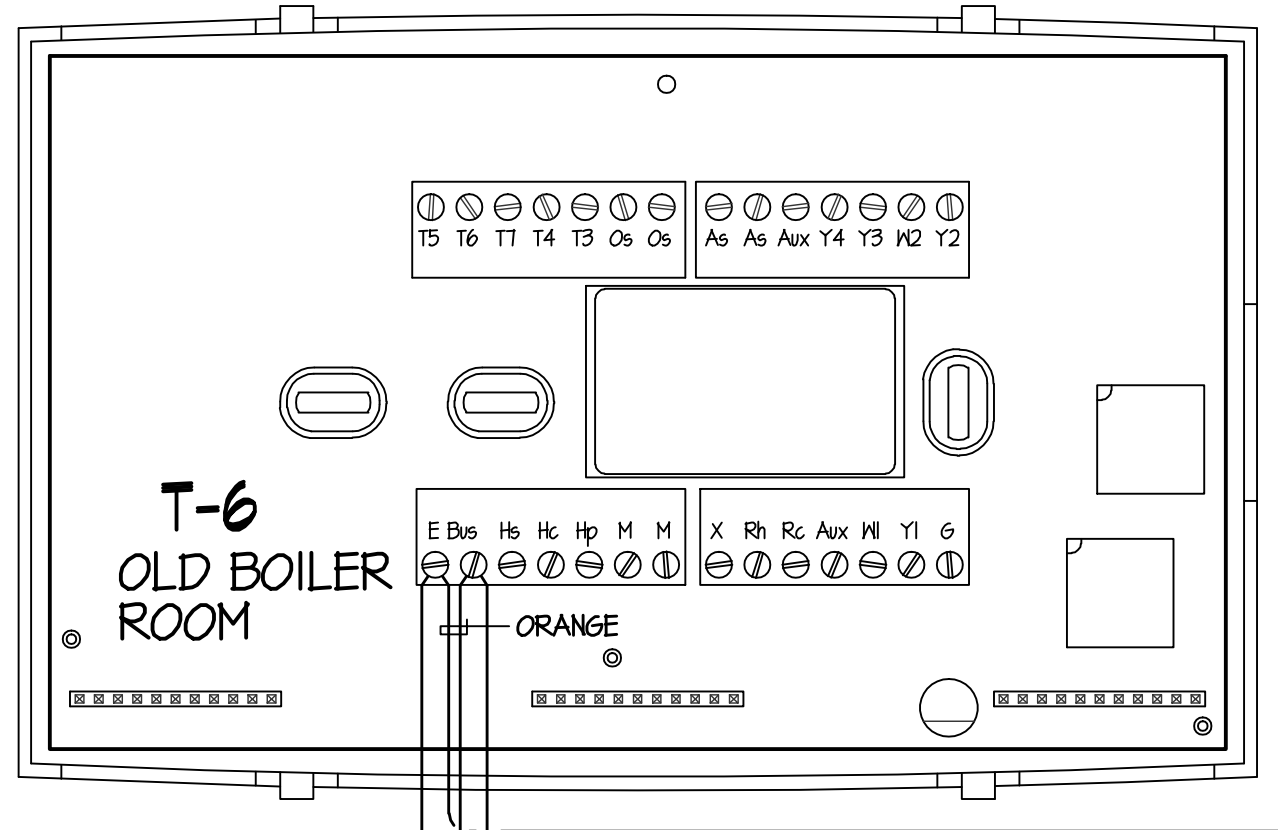
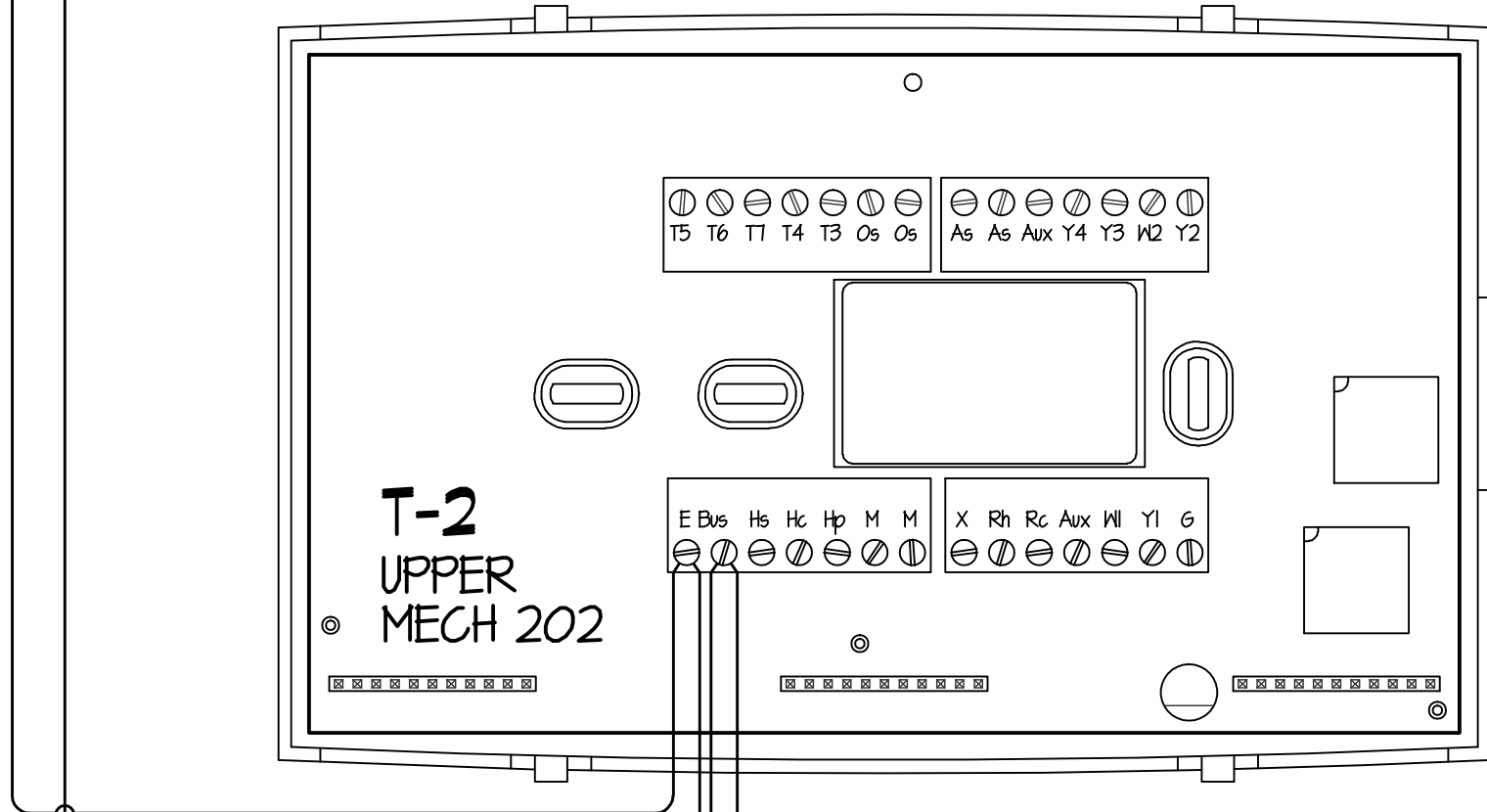
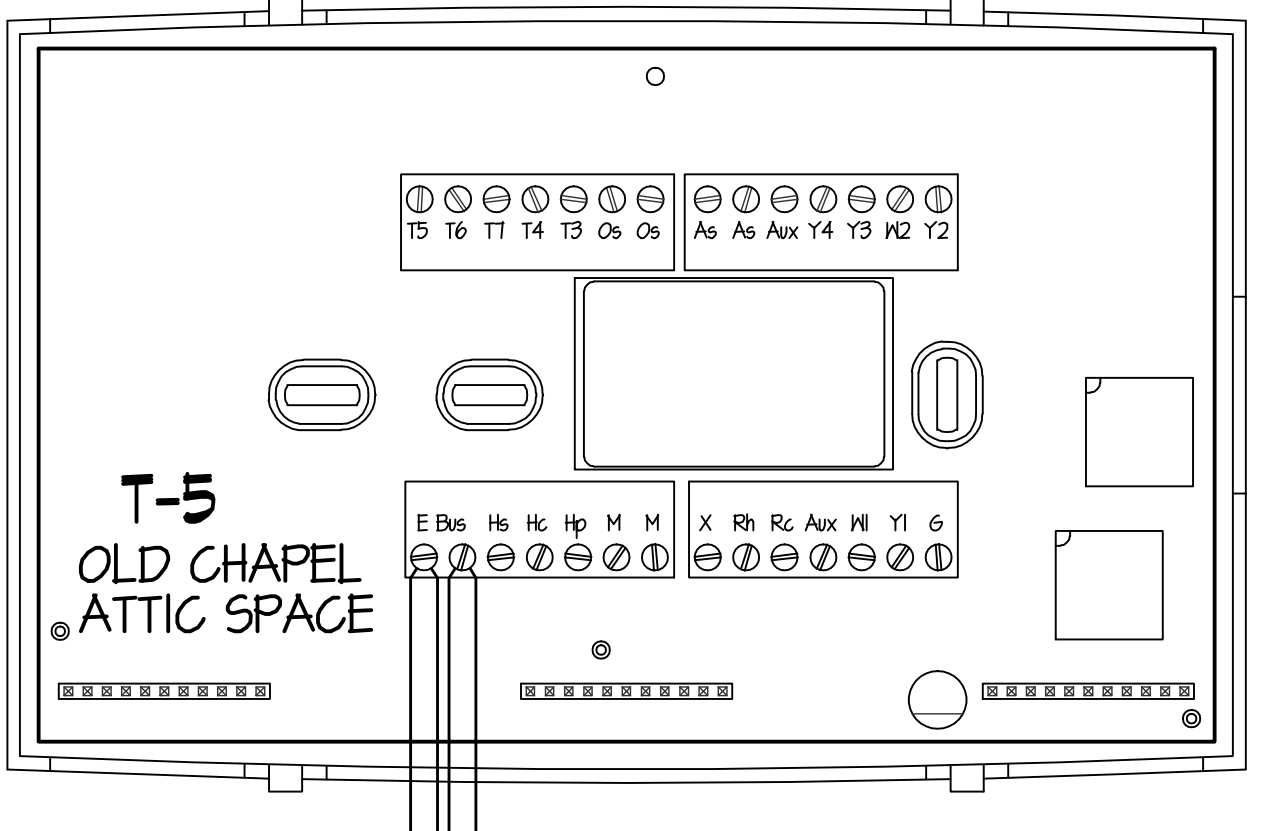
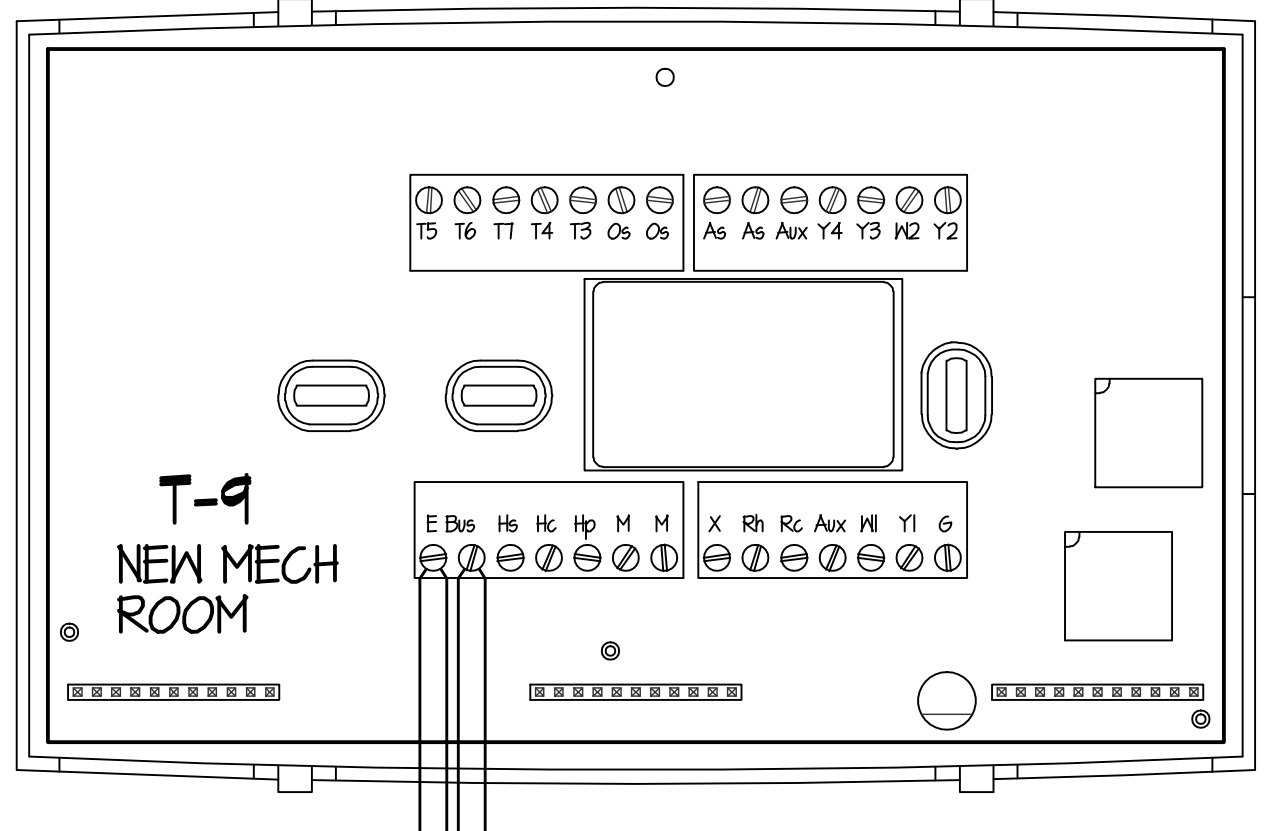
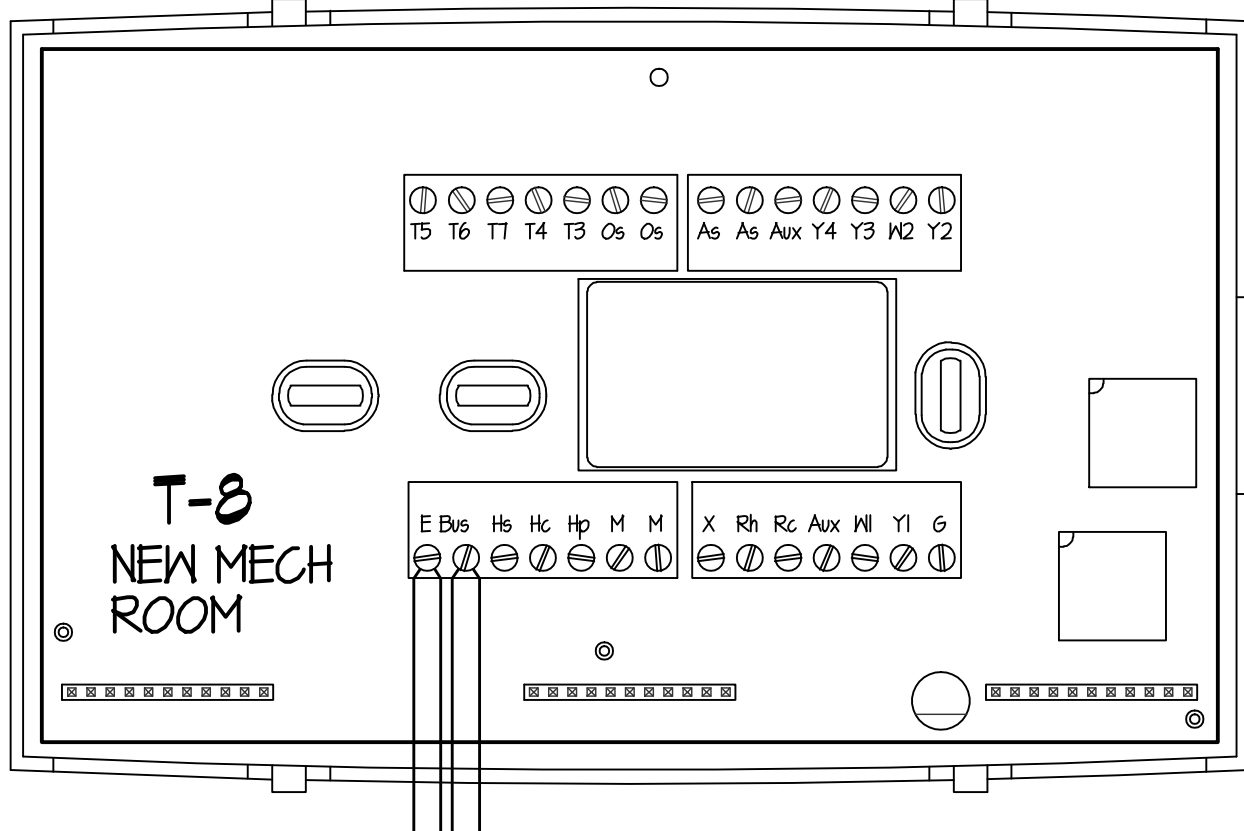
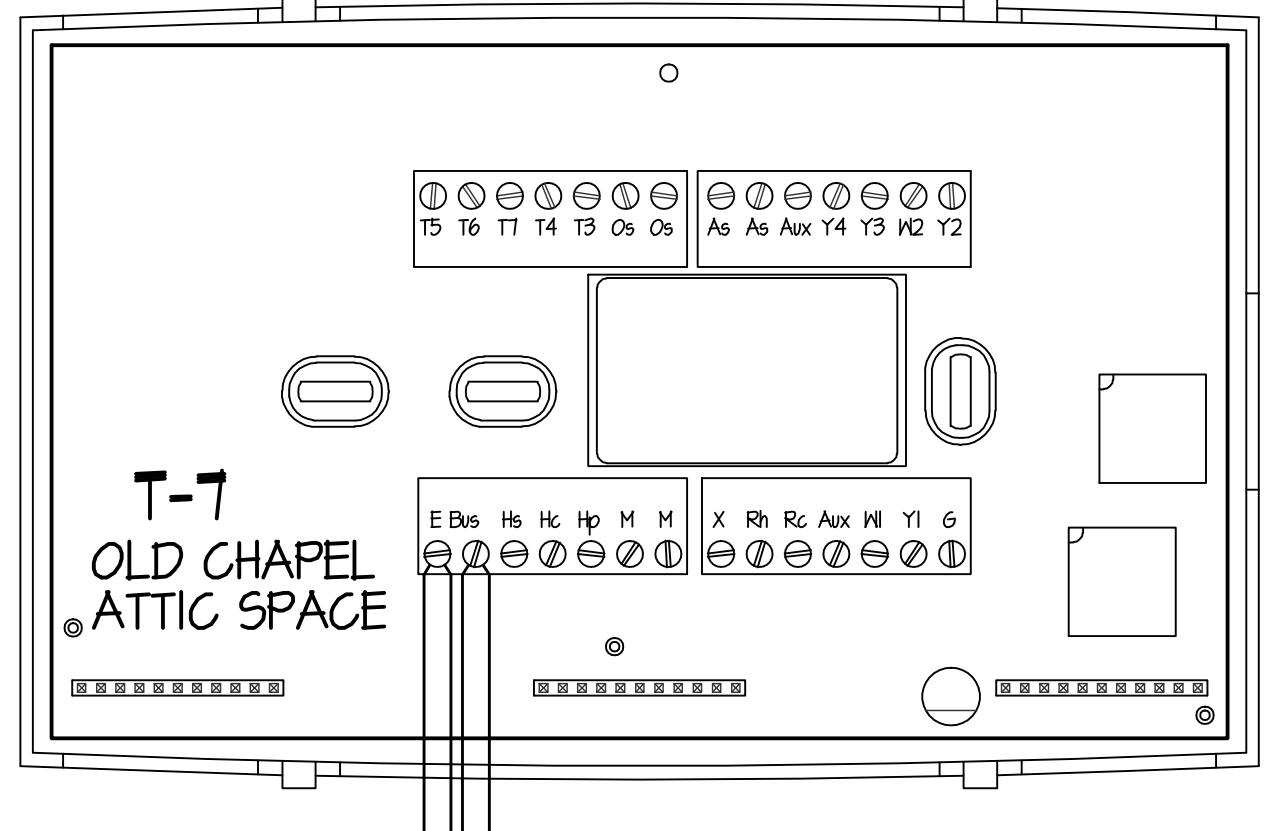
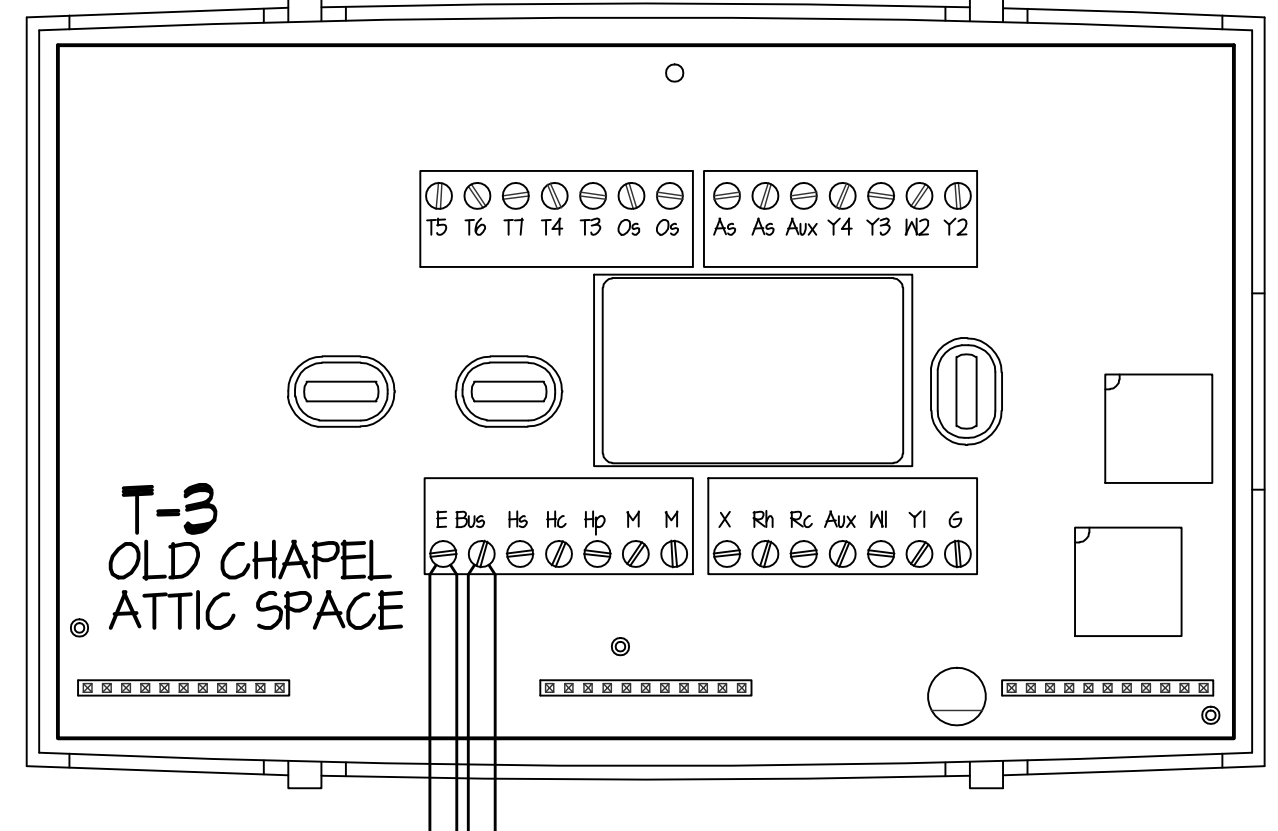
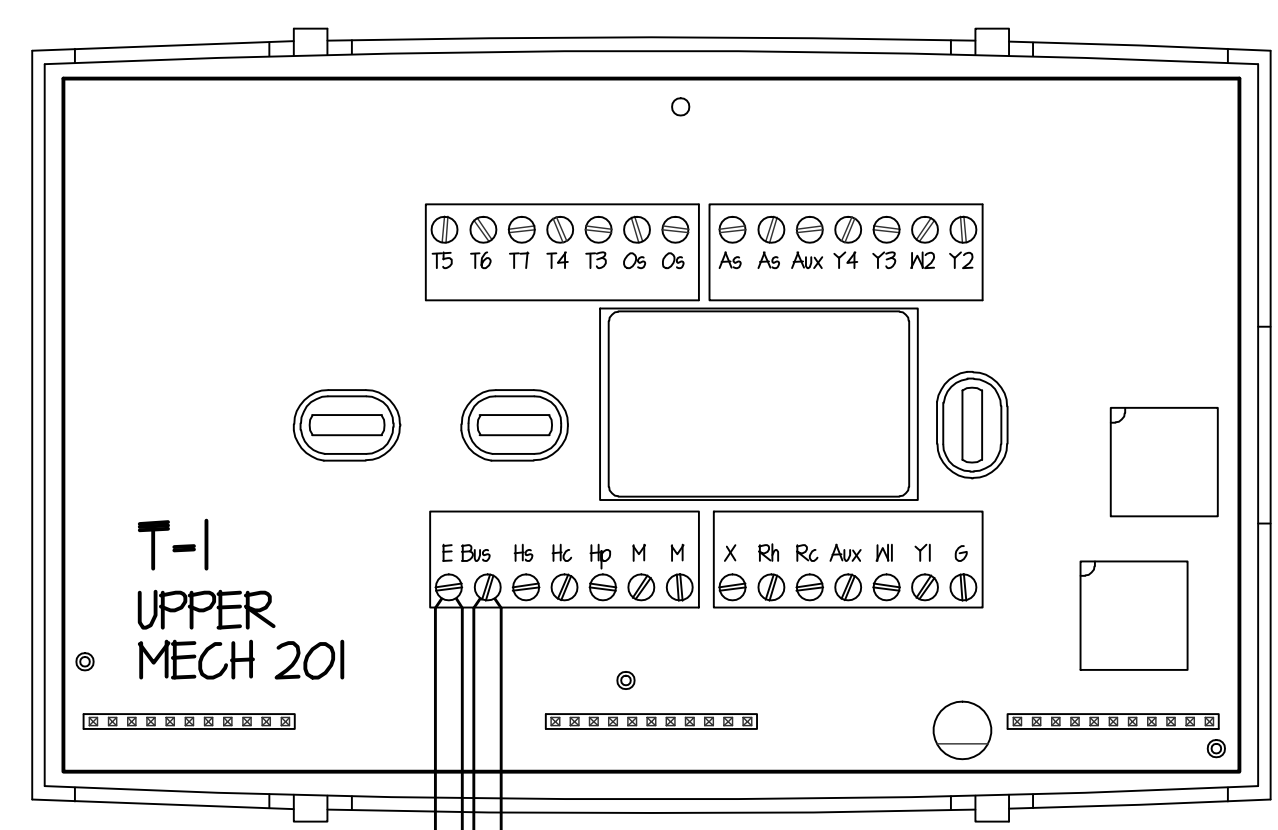
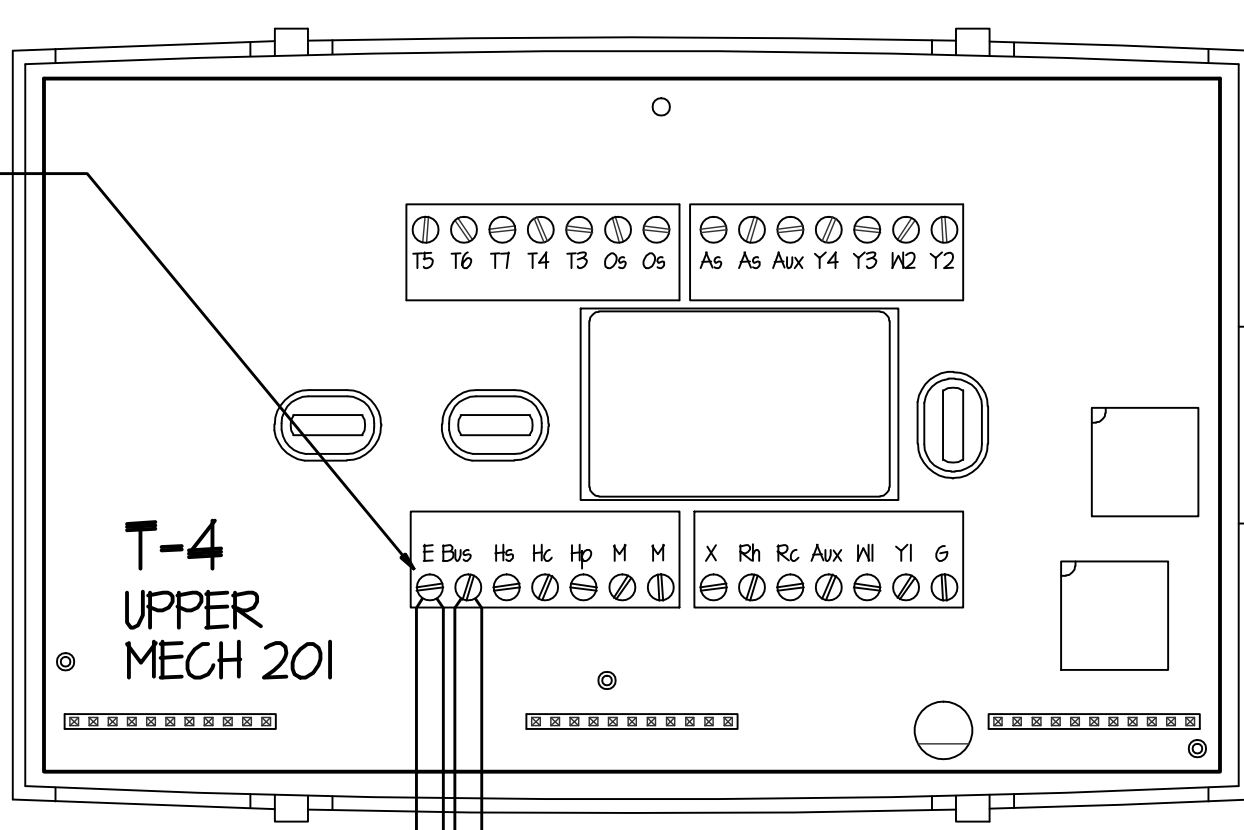


SEE DETAIL 'A' THIS SHEET TYP.

E-BUS CABLE SEE SPECIFICATIONS (TYPICAL)



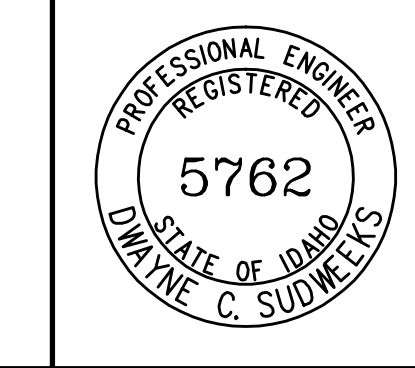
E.O.L. 2015-41B

CONTROL EQUIPMENT		
MARK	DESCRIPTION	CAT. NO. (1)
WS	WEBSTAT	WT350A1000
T-1	THERMOSTAT	TT350H1004

(1) ALL CATALOG NUMBERS SHOWN ARE HONEYWELL UNLESS NOTED OTHERWISE.

E-BUS WIRING DIAGRAM
SCALE: NONE

ORIGINAL DRAWING SIGNED BY: DWAYNE C. SUDWEEKS
DATE ORIGINAL SIGNED: July 7, 2010
ORIGINAL ON FILE AT ENGINEERED SYSTEMS ASSOCIATES
315 WEST CENTER, POCA TELLO, IDAHO 83204



ESA ENGINEERED SYSTEMS ASSOCIATES
315 WEST CENTER
POCA TELLO, IDAHO 83204
PHONE: (208) 233-0501
FAX: (208) 233-0529
ESA JOB NUMBER: 10040

nbw architects p.a.
ARCHITECTURE / PLANNING / INTERIORS
SCOTT L. NELSON, A.I.A. KEVIN R. BODDY, A.I.A. JAMES H. WYATT, A.I.A.
910 JOHN DRUMS PARKWAY P.O. BOX 2212 - IDAHO FALLS, IDAHO 83402-2212
OF 208-522-9779 OF 208-522-9785 (00) nbw-architects.com

MODIFICATIONS TO:
PALISADES WARD HVAC FA
AIRIE IDAHO STAKE
PROJECT TITLE: **ATC COMMUNICATING SYSTEM DIAGRAM**

PROJECT NO. 1035-1508
DATE: JULY 2010
DRAWN BY: SDB
CHECKED BY: BCS

REVISIONS

NO.	DESCRIPTION

DRAWING NO.: **ME3.1**

7/7/2010 3:36:59 PM F:\1010040 LDS Palisades\10040ME3.1.dwg