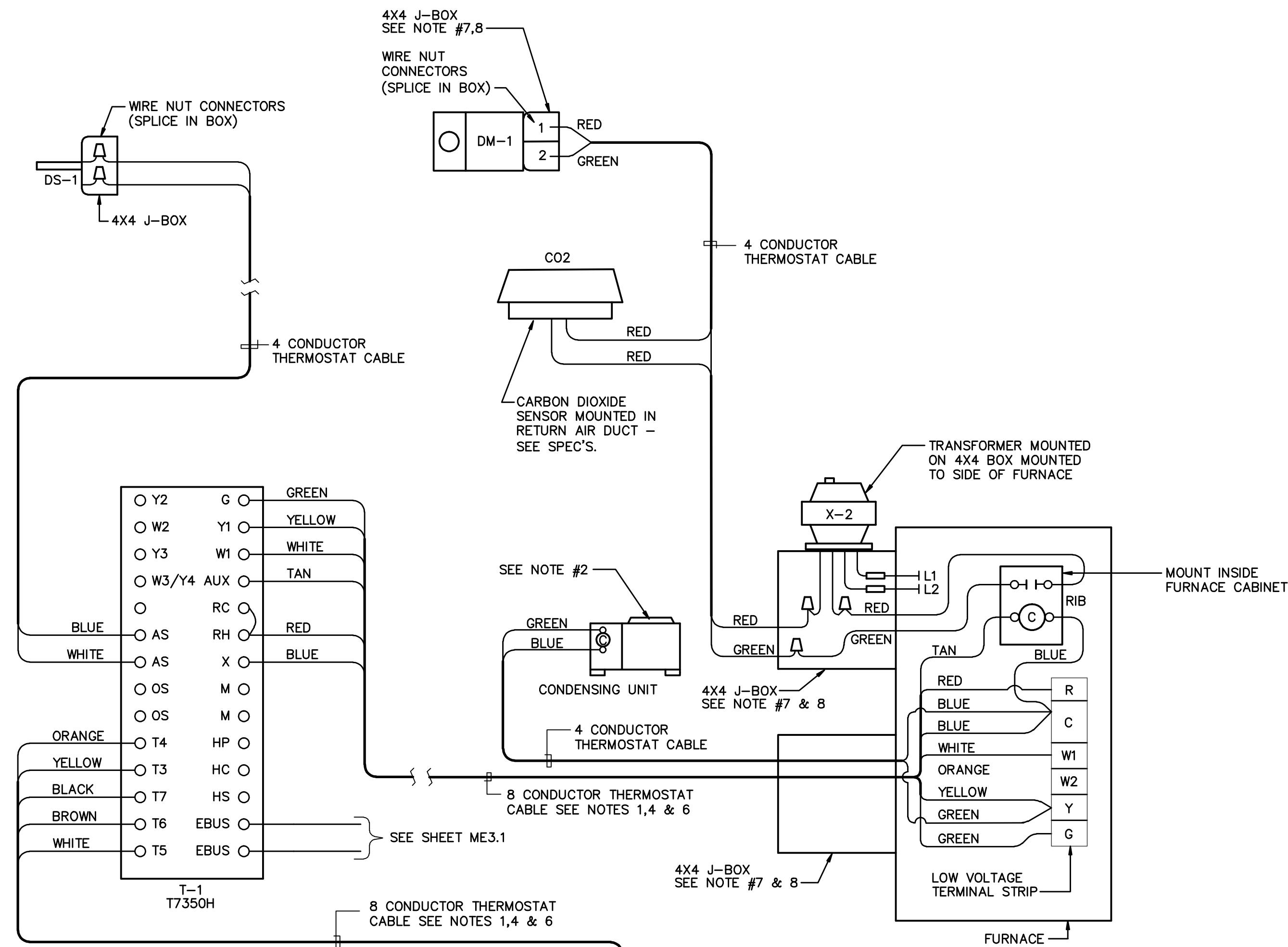


7/7/2010 3:41:19 PM F:\10\10040 LDS Palisades\10040ME2.1.dwg

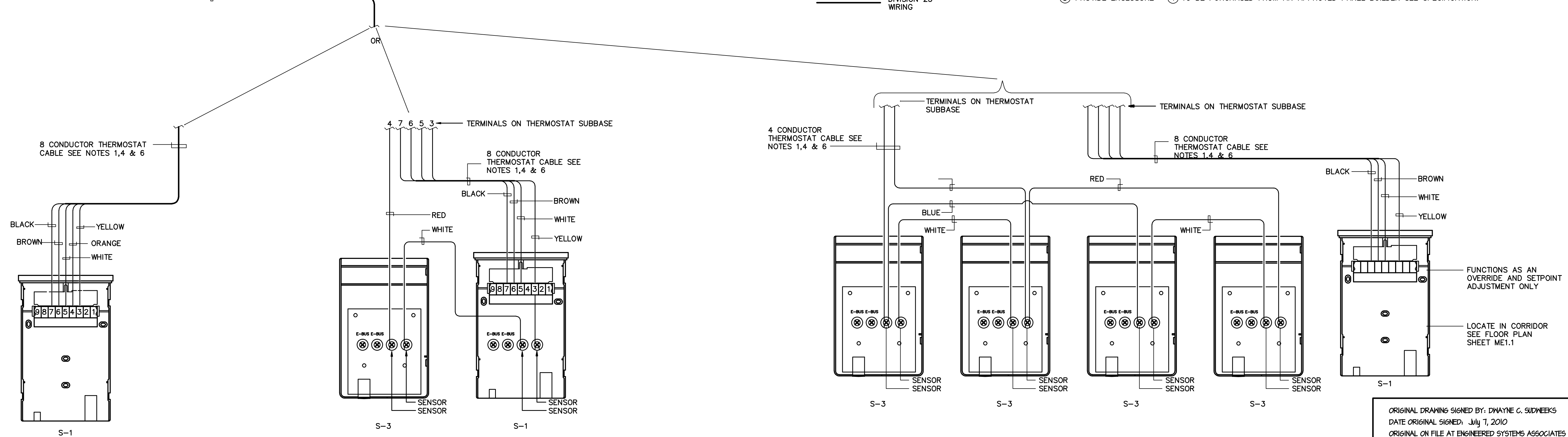


- NOTES:
1. THERMOSTAT CABLE- 4, 8 OR 12 CONDUCTOR- 18 AWG SOLID COPPER WIRE INSULATED WITH HIGH DENSITY POLYETHYLENE. CONDUCTORS PARALLEL ENCLOSED IN BROWN PVC JACKET. (NO 22 AWG CABLE ALLOWED).
 2. IF CONDENSING UNITS HAVE THEIR OWN POWER SUPPLY IT MAY BE NECESSARY TO ADD ADDITIONAL RELAYS IN CONDENSING UNIT TO PROPERLY INTERFACE CONTROLS.
 3. USE WIRE NUT CONNECTORS FOR SPLICING CONDUCTORS IN SPECIFIED LOCATIONS. AND TYTON TYPE CRIMP CONNECTORS FOR TERMINAL CONNECTIONS. NO TERMINAL CONNECTORS REQUIRED AT THERMOSTAT OR SENSOR.
 4. DO NOT RUN ANY OTHER WIRING IN THIS CONDUIT EXCEPT THERMOSTAT CABLE.
 5. VERIFY THAT FURNACE FAN SPEED CONTROL WIRING IS SET TO MATCH SCHEDULE SHEET AND THAT FAN OPERATES AT COOLING SPEED ONLY.
 6. DO NOT SPLICE WIRE IN RUNS FROM SENSOR TO THERMOSTAT, THERMOSTAT TO FURNACE, AND THERMOSTAT TO DISCHARGE AIR SENSOR.
 7. PROVIDE CHASE NIPPLE W/PLASTIC BUSHING WHEN ATTACHING J-BOX TO EQUIPMENT.
 8. PROVIDE CABLE CLAMP SO THAT CABLES CANNOT BE PULLED OUT OF J-BOX.

LEGEND:
 - - - - - DIVISION 26 OR FACTORY PREWIRED
 _____ DIVISION 23 WIRING

CONTROL EQUIPMENT					
MARK	DESCRIPTION	CAT. NO.(1)	MARK	DESCRIPTION	CAT. NO.(1)
T-1	THERMOSTAT	T7350H1009	WS	WEBSTAT	W7350A1000
S-1	REMOTE TEMPERATURE SENSOR SELECTABLE 10K OHM OR 20K OHM	T7771A1005	RP-5	RELAY PANEL 18X18X6W/COVER	(2)
S-2	NOT USED		TB-1	TERMINAL STRIP	AMP
S-3	REMOTE TEMPERATURE SENSOR 20K OHM	T7770A2004	TB-2	TERMINAL STRIP	AMP
			R1-R2	RELAY 1DEC	RH4B-UL
G-1	SENSOR GUARD	(2)	S1-S2	SOCKET 1DEC	SH4B-05
			R3-R6	RELAY 1DEC	RH2B-UL
DS-1	DISCHARGE AIR SENSOR	C7041B2005	S3-S6	SOCKET 1DEC	SH2B-05
DS-2	DISCHARGE AIR SENSOR	C7046C1000	C1	MTG RAIL 1DEC	BND-1000
OA-1	OUTDOOR AIR ENTHALPY SENSOR	C7046C1000	X1	TRANSFORMER 120V/24V 100VA	RIB TR100VA001
DM-1	DAMPER MOTOR TWO POSITION	MS8105A1008	EM-1	ECONOMIZER MODULE	W7212A1006
DM-2	DAMPER MOTOR MODULATING	MS75052008			
			RIB	RELAY	FUNCTIONAL DEVICES RIBUIC
DCV-1	CO ² SENSOR	C7632B1002	X-2	TRANSFORMER 120V/24V 50VA	AT150F1002
CO2	CO ² SENSOR	(2)			
			SD-1	DUCT SMOKE DETECTOR	DP2030B5003 (2)
			SR	SMOKE RELAY 30 AMP 120V COIL	(3)

(1) ALL CATALOG NUMBERS SHOWN ARE HONEYWELL UNLESS NOTED OTHERWISE. (2) SEE SPECIFICATION. (3) PROVIDE ENCLOSURE (4) TO BE PURCHASED FROM AN APPROVED PANEL BUILDER SEE SPECIFICATION.



SYSTEMS F-4, F-5, F-6, AND F-7

SYSTEMS F-8, AND F-9 (TWO SENSOR AVERAGING)

SYSTEMS F-3 (FOUR SENSOR AVERAGING)

WIRING DIAGRAM SINGLE FURNACE SYSTEMS

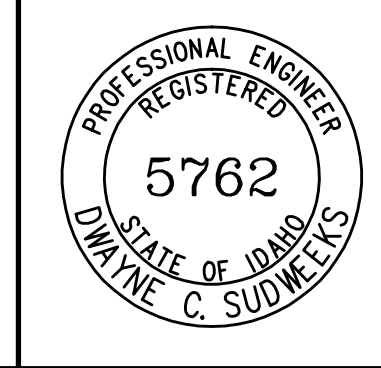
SYSTEMS: F-3 THRU F-9

nbw architects p.a.
 ARCHITECTURE / PLANNING / INTERIORS
 SCOTT L. NIELSON, AIA, KEVIN R. BODILY, AIA, JAMES H. WYATT, AIA.
 900 JOHN DUNNS PARKWAY P.O. BOX 2212 - IDAHO FALLS, IDAHO 83402-2212
 (208) 522-9779 (F) 208-522-9785 (O) nbw-architects.com

MODIFICATIONS TO:
PALISADES WARD HVAC FA
 AIRIE IDAHO STAKE

PROJECT NO. 1035-1508
 DATE: JULY 2010
 DRAWN BY: SDB
 CHECKED BY: DCS
 SHEET TITLE: ATC WIRING DIAGRAMS
 SHEET NO.: ME2.1

ORIGINAL DRAWING SIGNED BY: DWAYNE C. SUDWEEKS
 DATE ORIGINAL SIGNED: July 7, 2010
 ORIGINAL ON FILE AT ENGINEERED SYSTEMS ASSOCIATES
 315 WEST CENTER, POCATELLO, IDAHO 83204



ESA ENGINEERED SYSTEMS ASSOCIATES
 315 WEST CENTER
 POCATELLO, IDAHO 83204
 PHONE: (208) 233-0501
 FAX: (208) 233-0529
 ESA JOB NUMBER: 10040

ME2.1