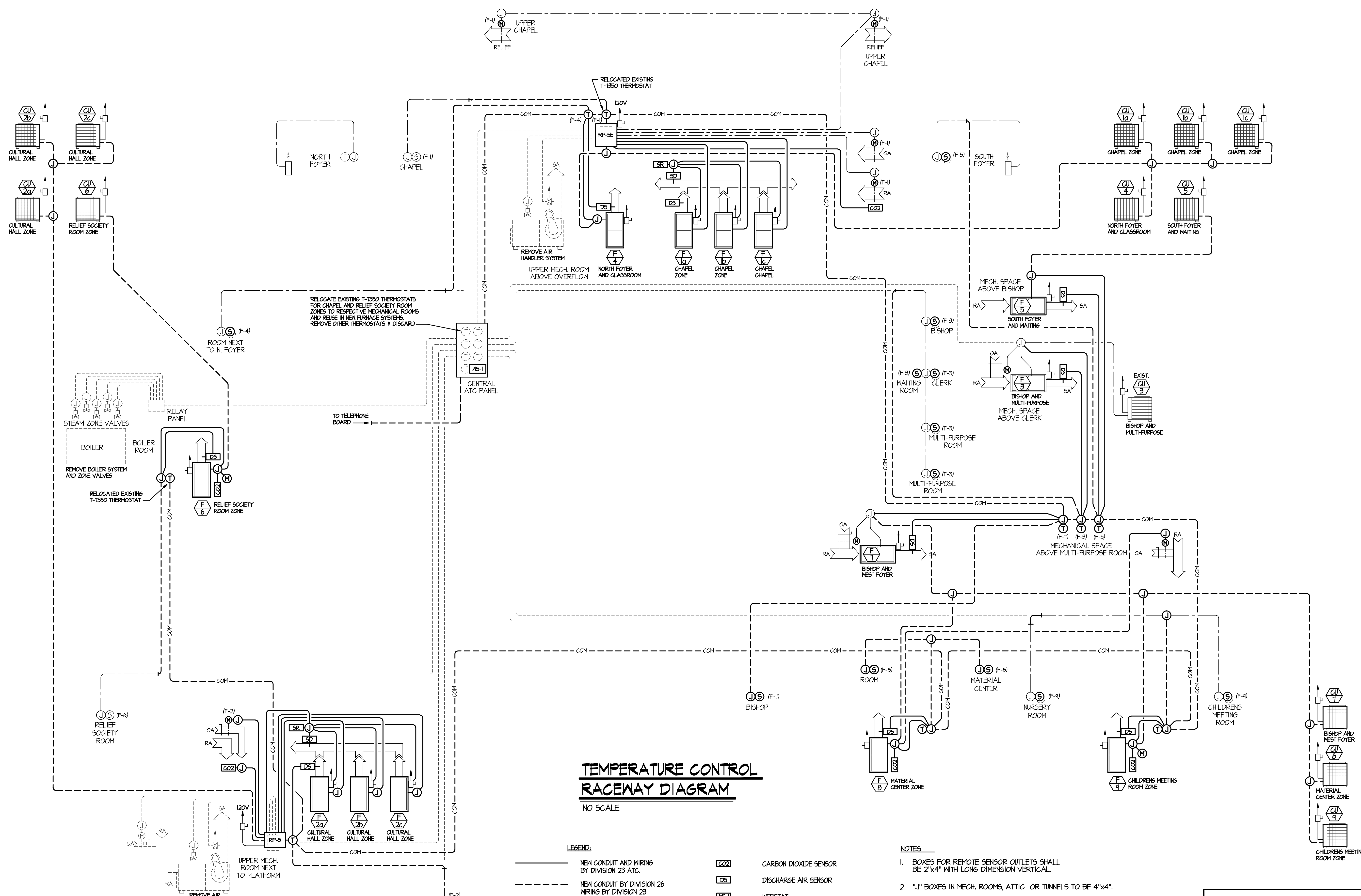


7/7/2010 3:42:31 PM F:\10\10040 LDS Palisades\10040ME1.1.dwg



TEMPERATURE CONTROL RACEWAY DIAGRAM

NO SCALE

LEGEND:

- NEW CONDUIT AND WIRING BY DIVISION 23 ATC.
- - - NEW CONDUIT BY DIVISION 26 WIRING BY DIVISION 23
- · - · - EXISTING CONDUIT TO REMAIN. FILL NEW WIRING AS REQUIRED.
- - - - EXISTING CONDUIT TO BE ABANDONED OR REMOVED
- ⊙ T-1300-2000 THERMOSTAT
- Ⓢ REMOTE SENSOR
- Ⓝ JUNCTION BOX
- Ⓜ O.A. DAMPER MOTOR
- ⓁⓈ CARBON DIOXIDE SENSOR
- ⓁⓈⓈ DISCHARGE AIR SENSOR
- ⓁⓈⓈⓈ WEBSTAT
- ⓁⓈⓈⓈⓈ SMOKE DETECTOR
- ⓁⓈⓈⓈⓈⓈ SMOKE RELAY
- ⓁⓈⓈⓈⓈⓈⓈ ELECTRICAL SERVICE AND DISCONNECT BY DIV. 26.

NOTES:

1. BOXES FOR REMOTE SENSOR OUTLETS SHALL BE 2"x4" WITH LONG DIMENSION VERTICAL.
2. "J" BOXES IN MECH. ROOMS, ATTIC OR TUNNELS TO BE 4"x4".
3. ALL RACEWAY CONDUIT TO BE 3/4" UNLESS OTHERWISE NOTED.
4. CONDUIT TO REMOTE SENSORS MUST BE KEPT SEPARATE.
5. UTILIZE EXISTING RACEWAY CONDUIT WHEREVER POSSIBLE.
6. ALL POWER WIRING, DISCONNECTS, ETC BY DIVISION 26 ELECTRICAL.
7. ALL RACEWAY CONDUIT BETWEEN ATC PANELS AND MECHANICAL EQUIPMENT LOCATED IN THE SAME ROOM BY DIVISION 23 ATC.
8. ALL RACEWAY CONDUIT BETWEEN ATC PANELS AND MECHANICAL EQUIPMENT LOCATED OUTSIDE MECH. ROOMS BY DIVISION 16 ELECT.

nbw architects p.a.
 ARCHITECTURE / PLANNING / INTERIORS
 SCOTT L. NELSON, A.L.A. KEVIN R. BODDY, A.L.A. JAMES H. WYATT, A.L.A.
 900 JOHN DRUMS PARKWAY P.O. BOX 2212 - IDAHO FALLS, IDAHO 83402-2212
 (208) 746-5222-9779 (208) 746-5222-9785 (208) nbw-architects.com

MODIFICATIONS TO:
PALISADES WARD HVAC FA
 AIRIE IDAHO STAKE
ATC CONDUIT AND WIRING DIAGRAM

REVISIONS

NO.	DESCRIPTION

PROJECT NO. 1035-1508
DATE: JULY 2010
DRAWN BY: SDB
CHECKED BY: DCS
DRAWING NO.:

ORIGINAL DRAWING SIGNED BY: DWAYNE C. SUDWEEKS
 DATE ORIGINAL SIGNED: JULY 7, 2010
 ORIGINAL ON FILE AT ENGINEERED SYSTEMS ASSOCIATES
 315 WEST CENTER, POCA TELLO, IDAHO 83204

PROFESSIONAL ENGINEER
 REGISTERED
5762
 STATE OF IDAHO
 DWAYNE C. SUDWEEKS

ESA ENGINEERED SYSTEMS ASSOCIATES

315 WEST CENTER
 POCA TELLO, IDAHO 83204

PHONE: (208) 233-0501
 FAX: (208) 233-0529
 ESA JOB NUMBER: 10040

ME1.1