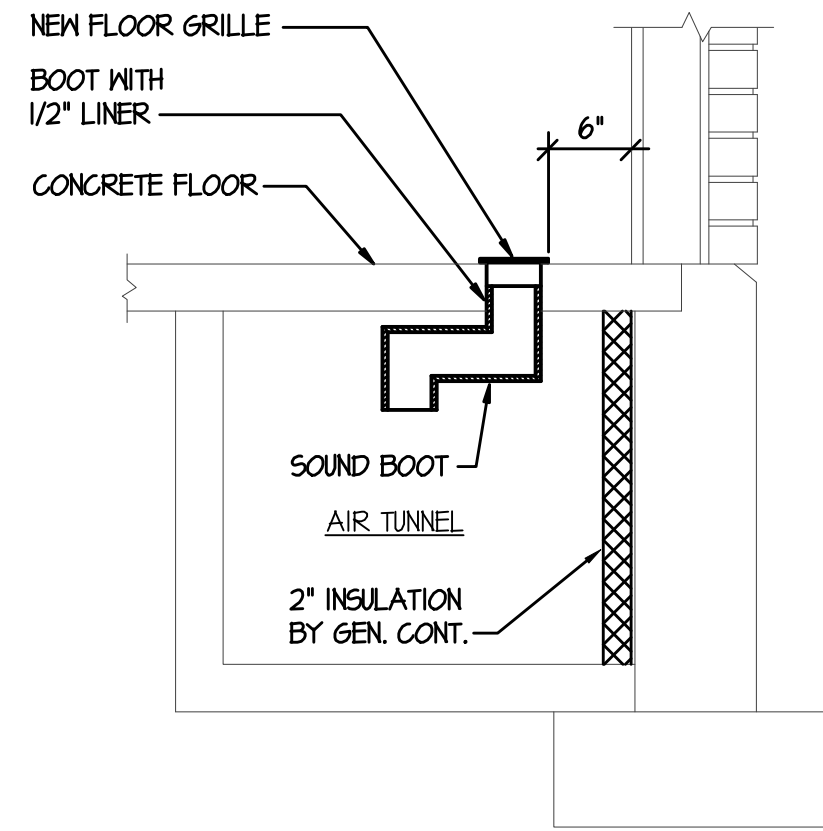
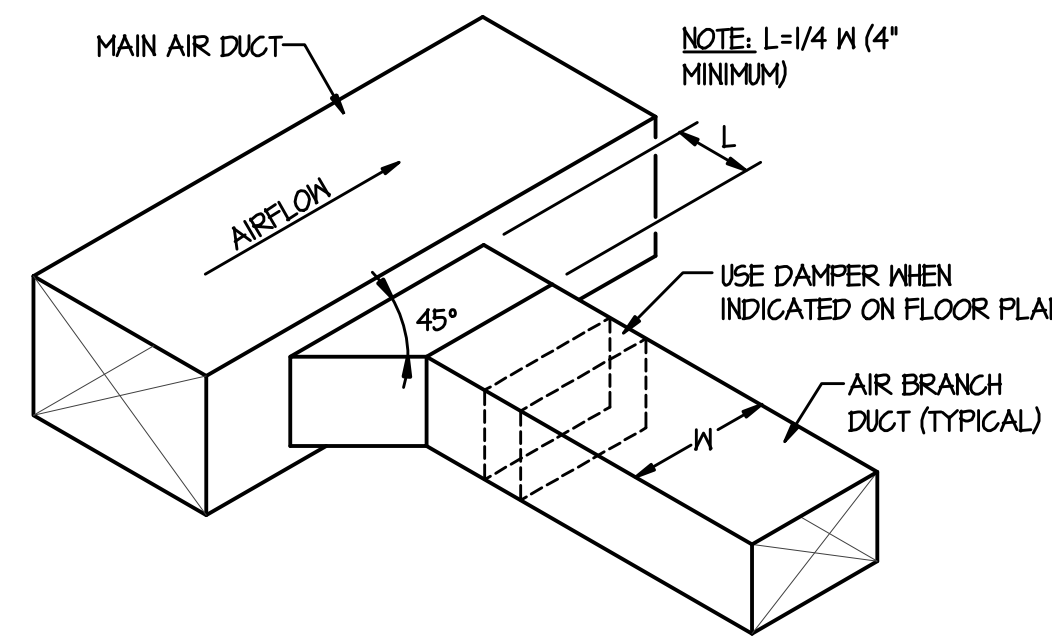


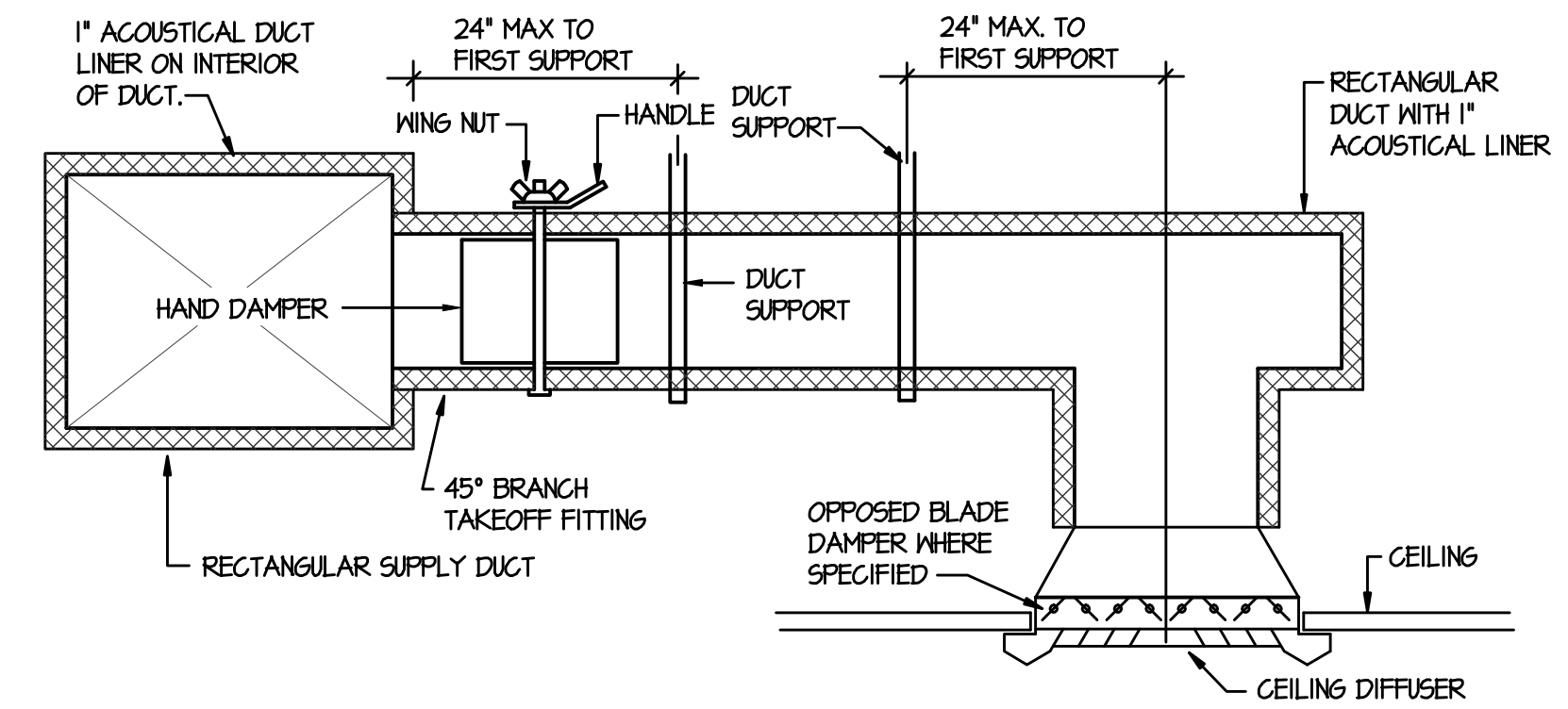
DUCT LINER DETAIL
NO SCALE



FLOOR GRILLE DETAIL
NO SCALE



RECTANGULAR DUCT CONNECTION DETAIL
NO SCALE

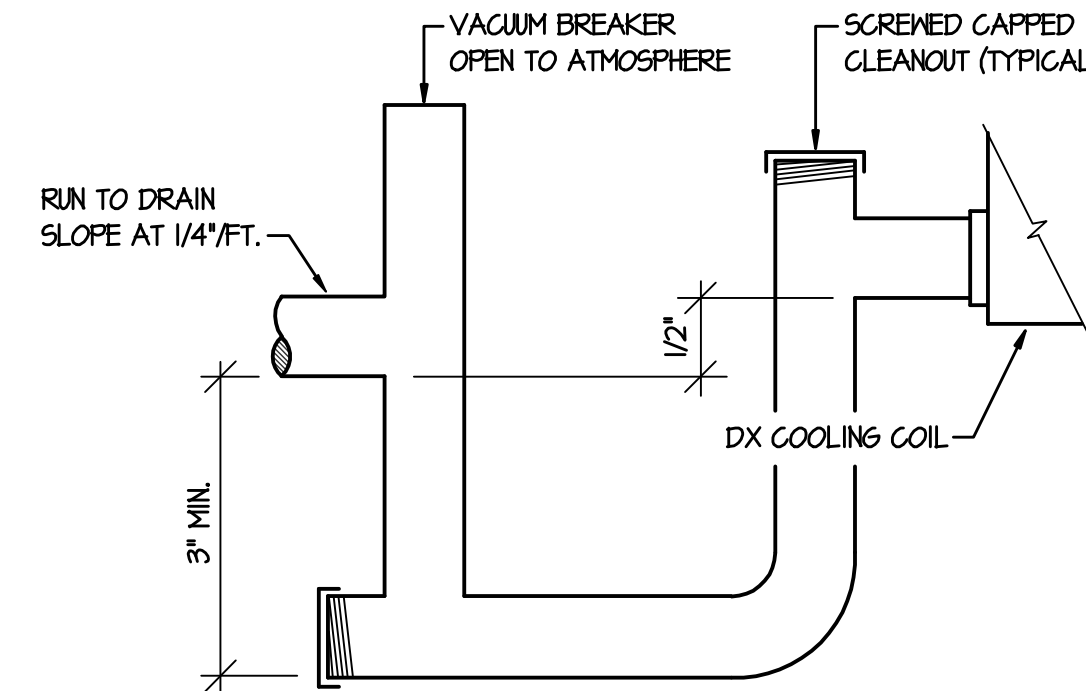


CEILING DIFFUSER DETAIL WITH RIGID DUCTWORK
NO SCALE

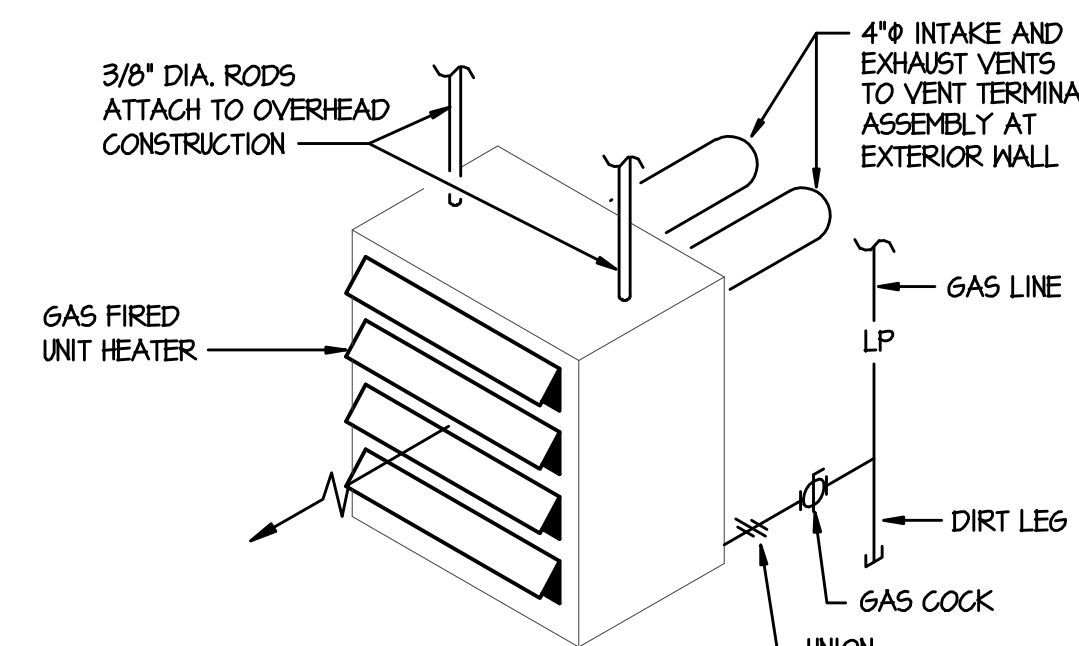
DIMENSION OF LONGEST SIDE, INCHES	SHEET METAL GAUGE (ALL FOUR SIDES)	MINIMUM REINFORCING ANGLE SIZE AND MAXIMUM LONGITUDINAL SPACING BETWEEN TRANSVERSE JOINTS &/OR INTERMEDIATE REINFORCING	MIN. H. IN.	TRANSVERSE REINFORCING (1)			
				DRIVE SLIP	HEMMED SLIP	ALTERNATE BAR SLIP	REINFORCED BAR SLIP
UP THRU 12	26	NONE REQUIRED	1	26	26	24	24
13-18	24	NONE REQUIRED	1	24	24	24	24
19-30	24	1"x1 1/8" @ 60 IN	1	24	24	24	24
31-42	22	1"x1 1/8" @ 60 IN	1	22	22	22	22

(1) TRANSVERSE REINFORCING SIZE IS DETERMINED BY DIMENSION OF SIDE TO WHICH ANGLE IS APPLIED.

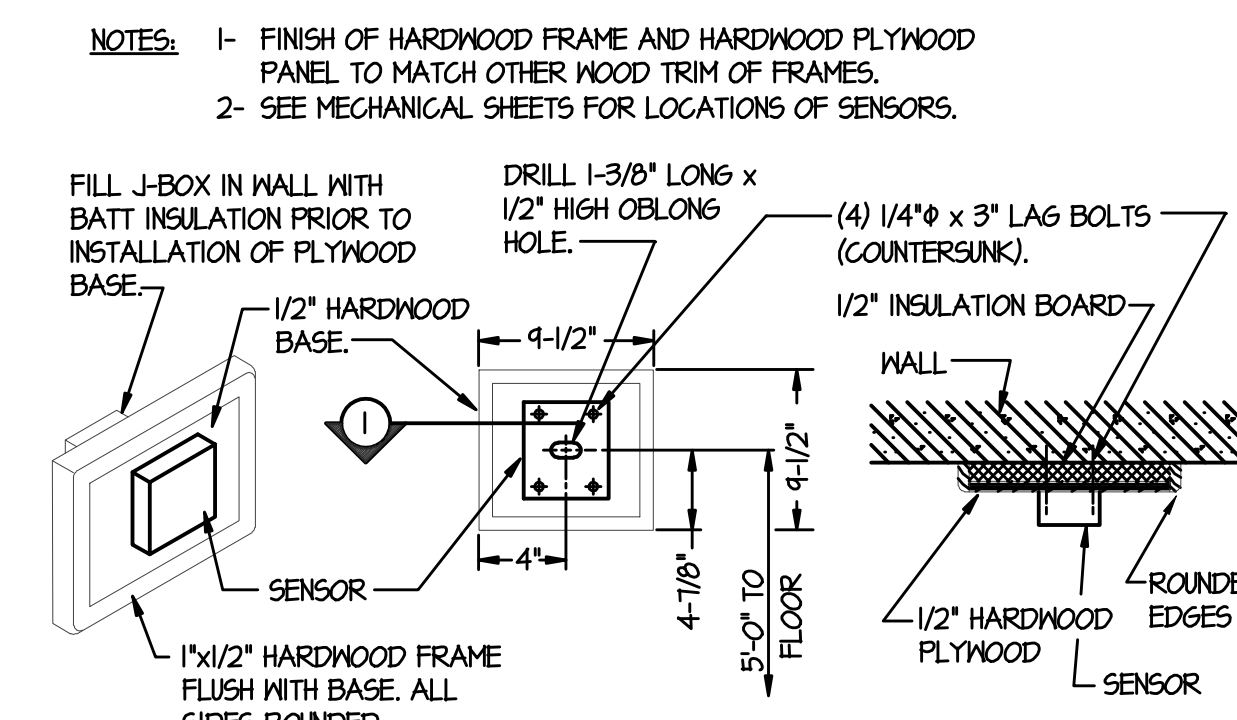
DUCT CONSTRUCTION DETAIL
NO SCALE



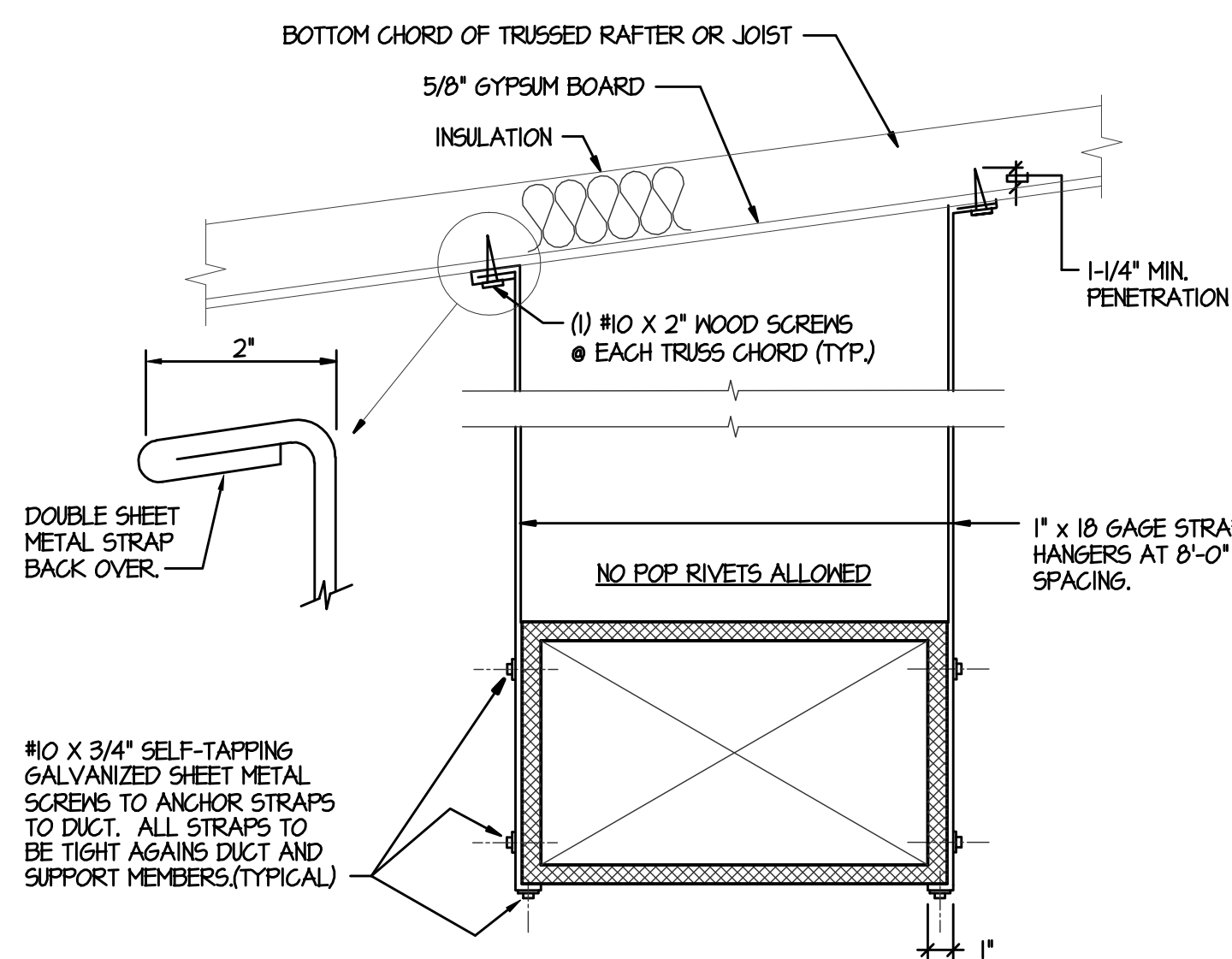
COOLING COIL CONDENSATE DRAIN DETAIL
NO SCALE



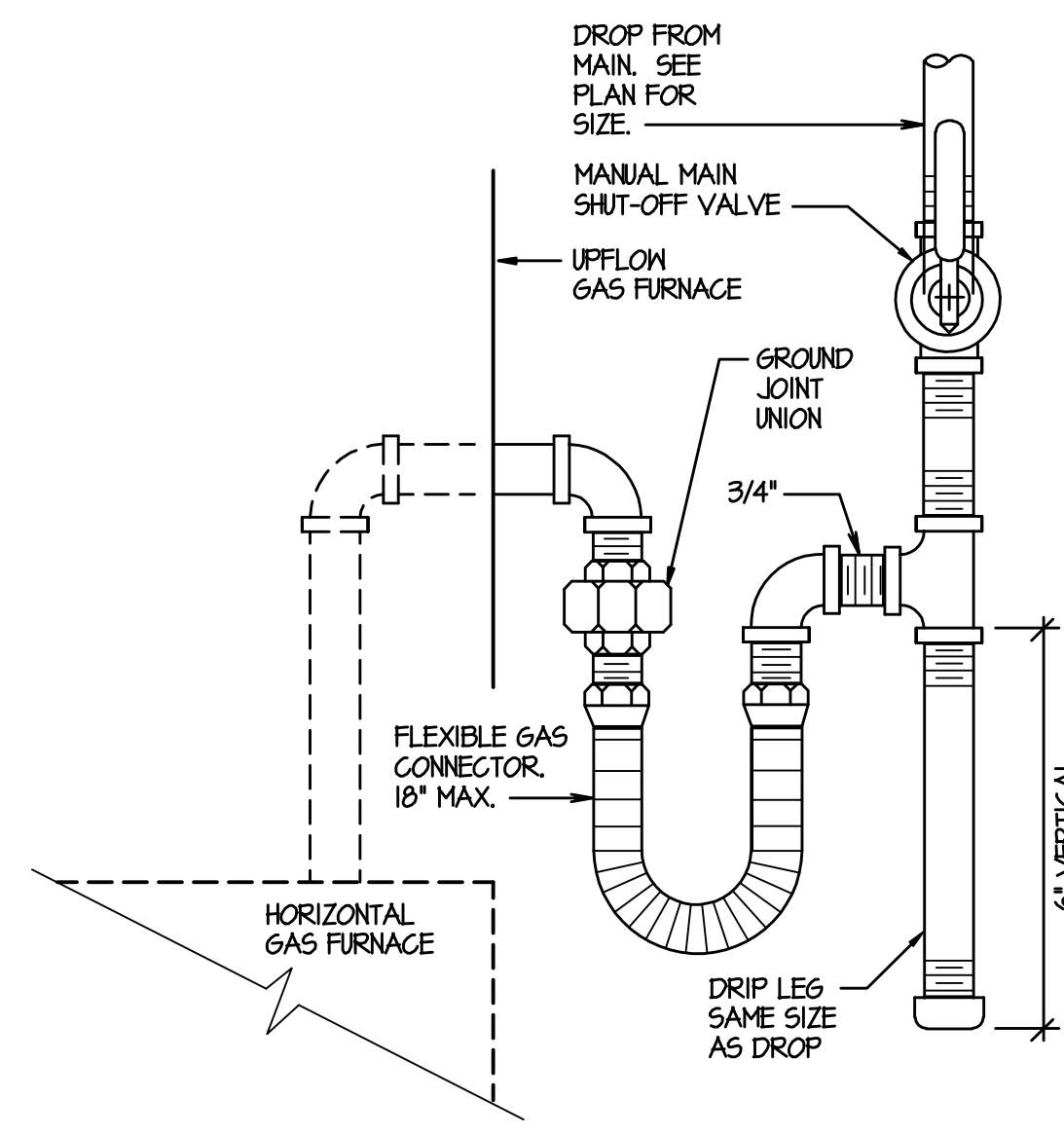
GAS FIRED UNIT HEATER DETAIL
NO SCALE



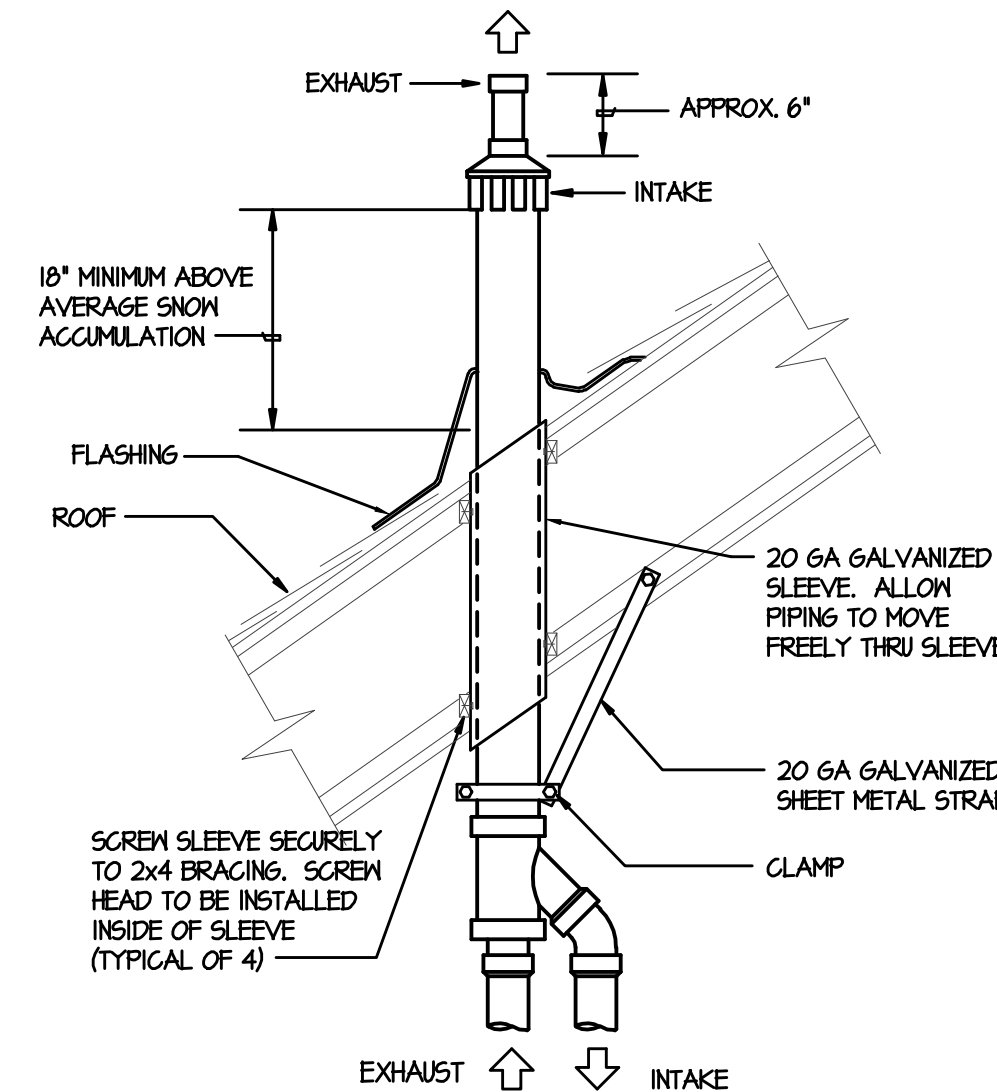
INSULATED BASE FOR SENSORS
NO SCALE (ALL REMOTE SENSORS THRU-OUT BUILDING)



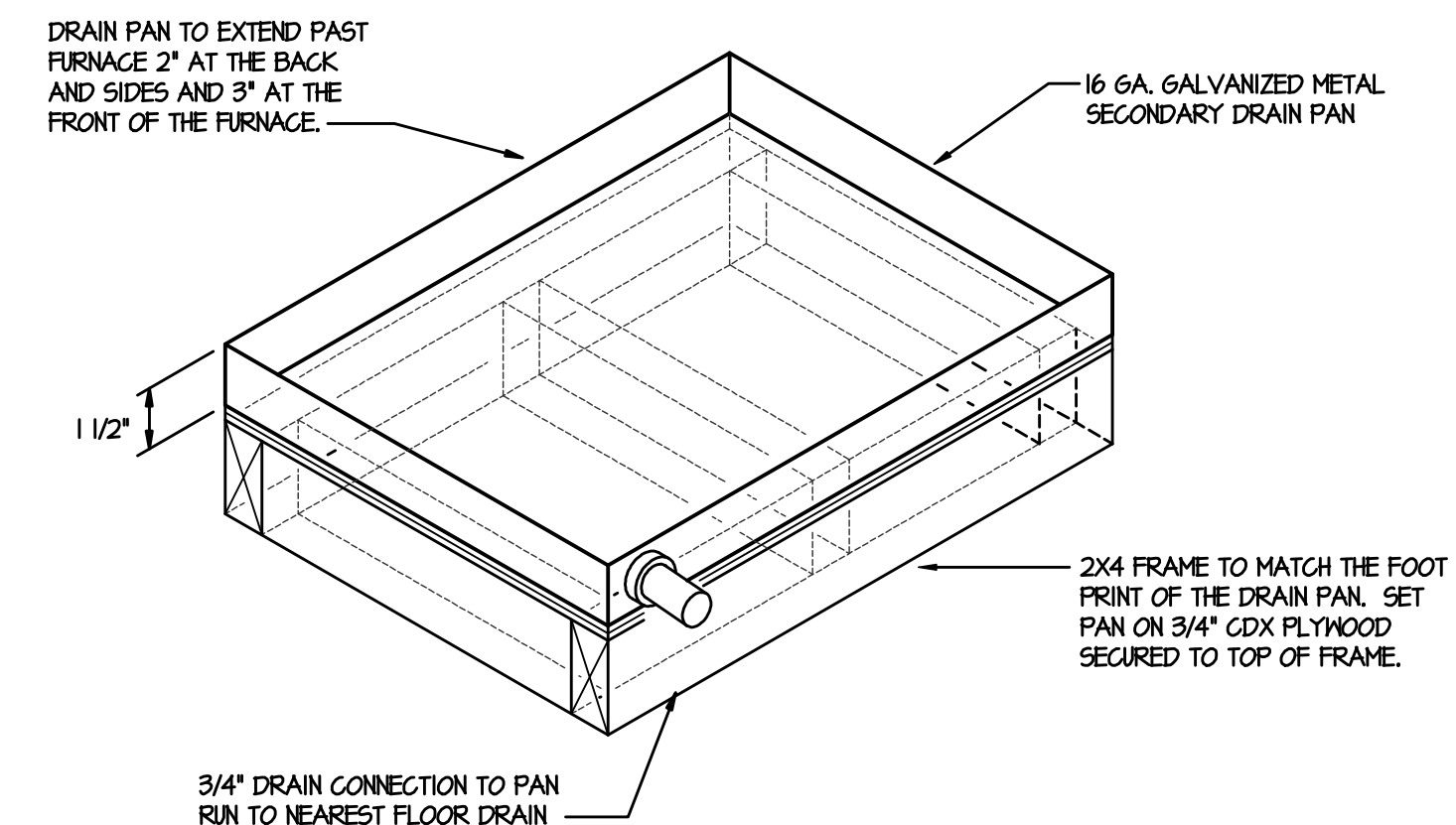
DUCT STRAP HANGER DETAIL
NO SCALE



GAS LINE CONNECTION DETAIL
NO SCALE

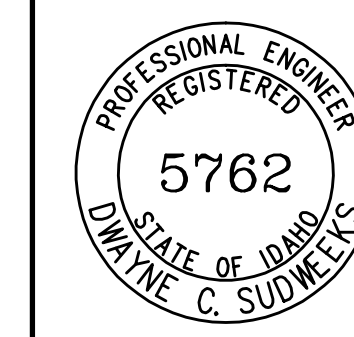


CONCENTRIC VENT TERMINATION DETAIL
NO SCALE



FURNACE DRAIN PAN DETAIL
NO SCALE

ORIGINAL DRAWING SIGNED BY: DWAYNE C. SUDWEERS
DATE ORIGINAL SIGNED: July 7, 2010
ORIGINAL ON FILE AT ENGINEERED SYSTEMS ASSOCIATES
315 WEST CENTER, POCA TELLO, IDAHO 83204



ESA ENGINEERED SYSTEMS ASSOCIATES
315 WEST CENTER
POCA TELLO, IDAHO 83204
PHONE: (208) 233-0501
FAX: (208) 233-0529
ESA JOB NUMBER: 10040

nbw architects p.a.
ARCHITECTURE / PLANNING / INTERIORS
SCOTT L. NELSON, A.A. KEVIN R. BODILY, A.A. JAMES H. WYATT, A.A.
910 JOHN DRUMS PARKWAY P.O. BOX 2212 - IDAHO FALLS, IDAHO 83402-2212
(208) 746-5222-9779 (208) 746-5222-9785 (208) nbw-architects.com

MODIFICATIONS TO:
PALISADES WARD HVAC FA
RIE IDAHO STAKE

SHEET TITLE: MECHANICAL DETAILS

REVISIONS

PROJECT NO. 1035-1508
DATE: JULY 2010
DRAWN BY: SDB
CHECKED BY: BCS

DRAWING NO.:

M4.2

7/7/2010 3:45:52 PM F:\10\10040 LDS Palisades\10040M4.2.dwg