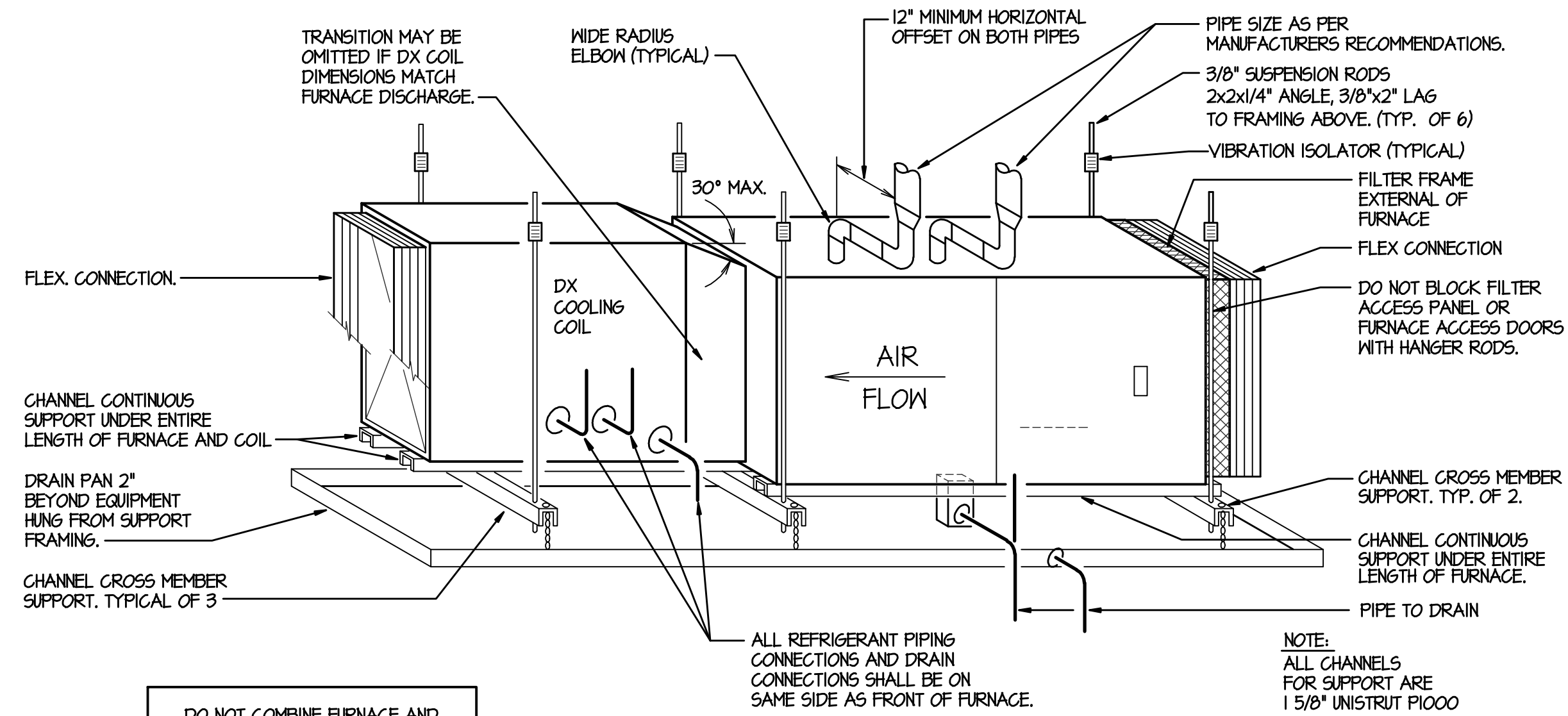
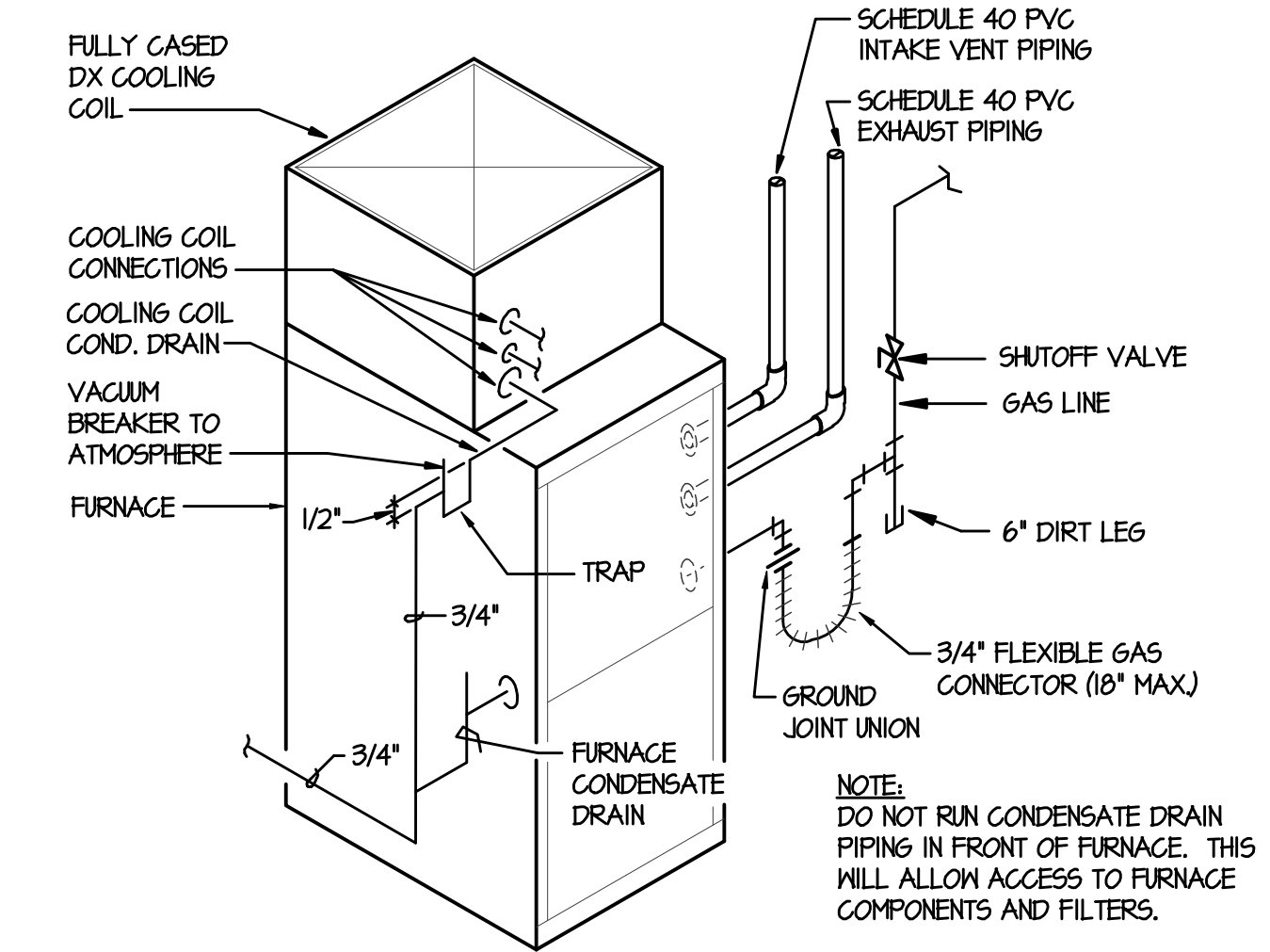


SUSPENDED PIPE SUPPORT
NO SCALE

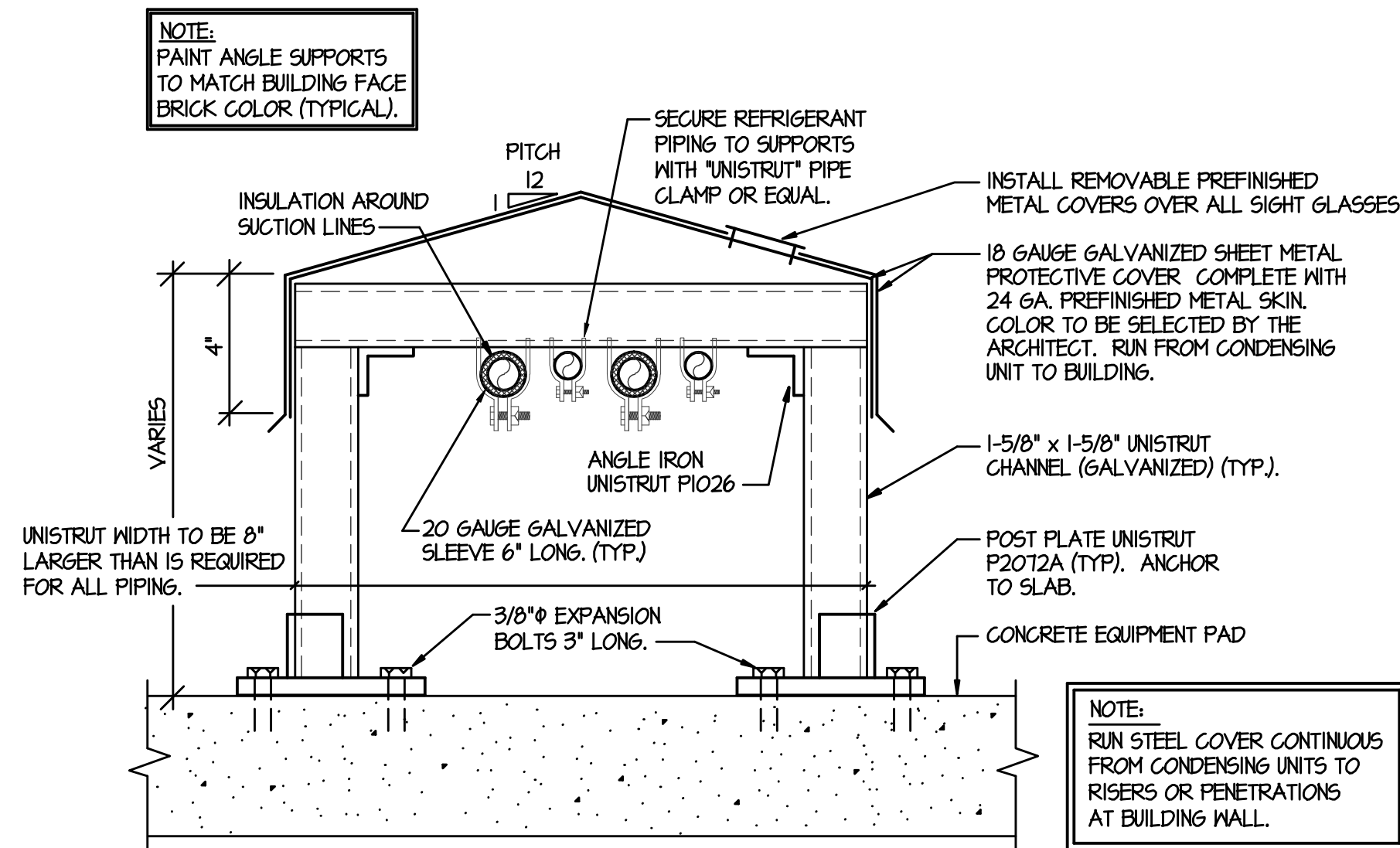


FURNACE PIPING AND SUPPORT DETAIL
NO SCALE

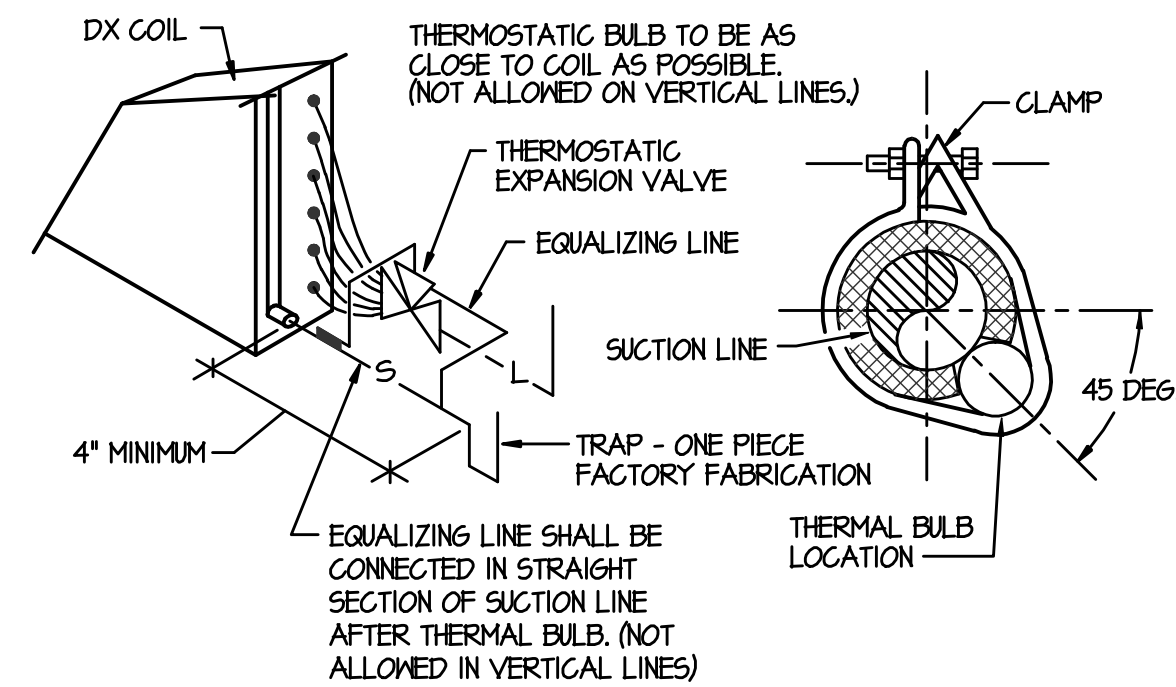


FURNACE PIPING DETAIL
NO SCALE

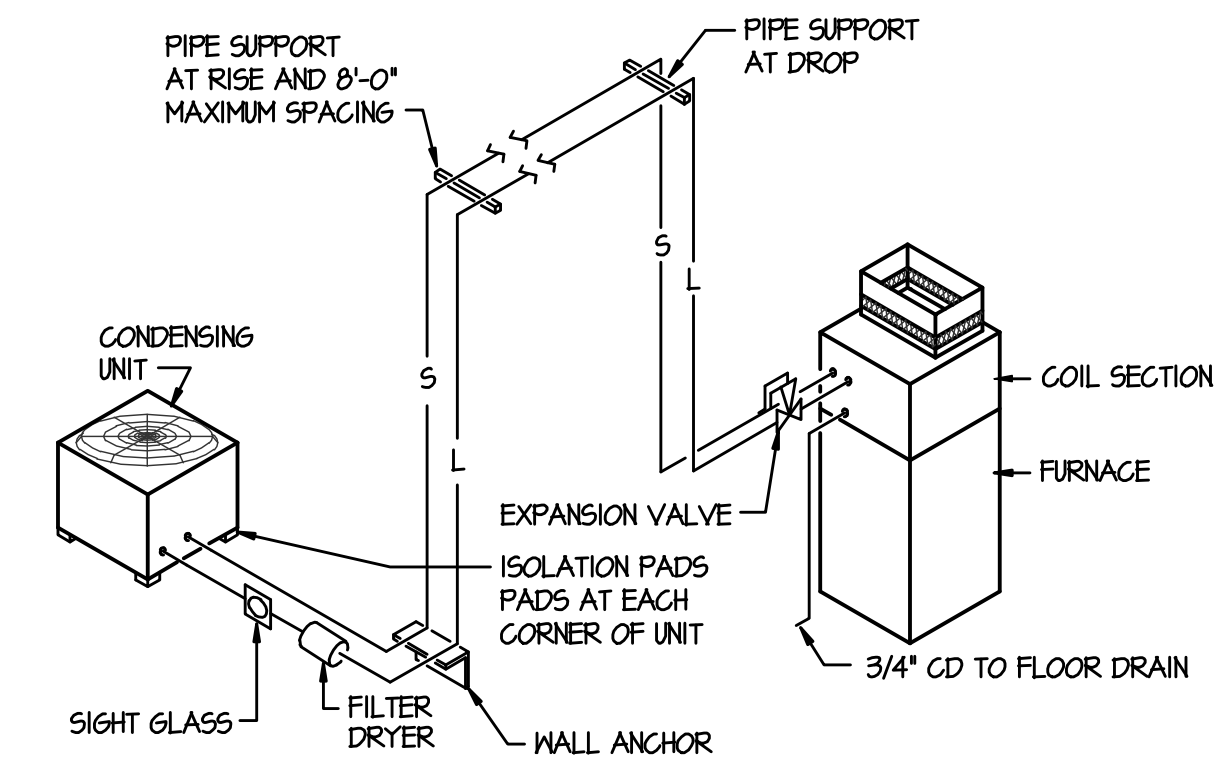
DO NOT COMBINE FURNACE AND COOLING COIL DRAINS WITH AUXILIARY DRAIN PAN DRAINS



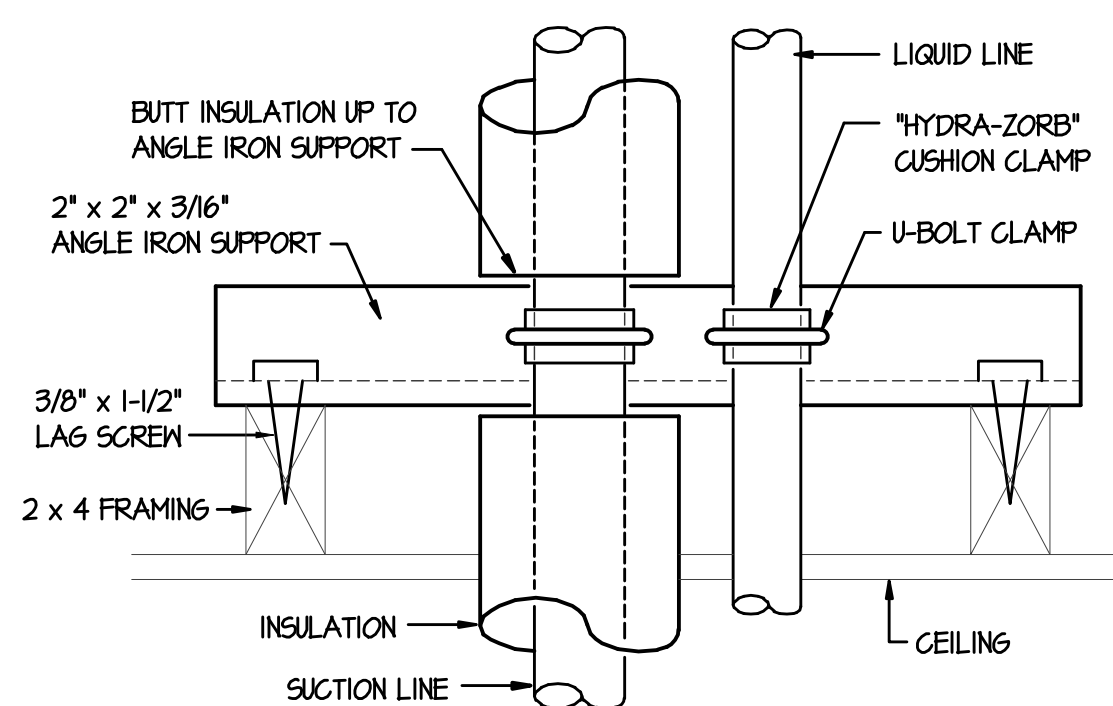
REFRIGERANT PIPE SUPPORT DETAIL
NO SCALE



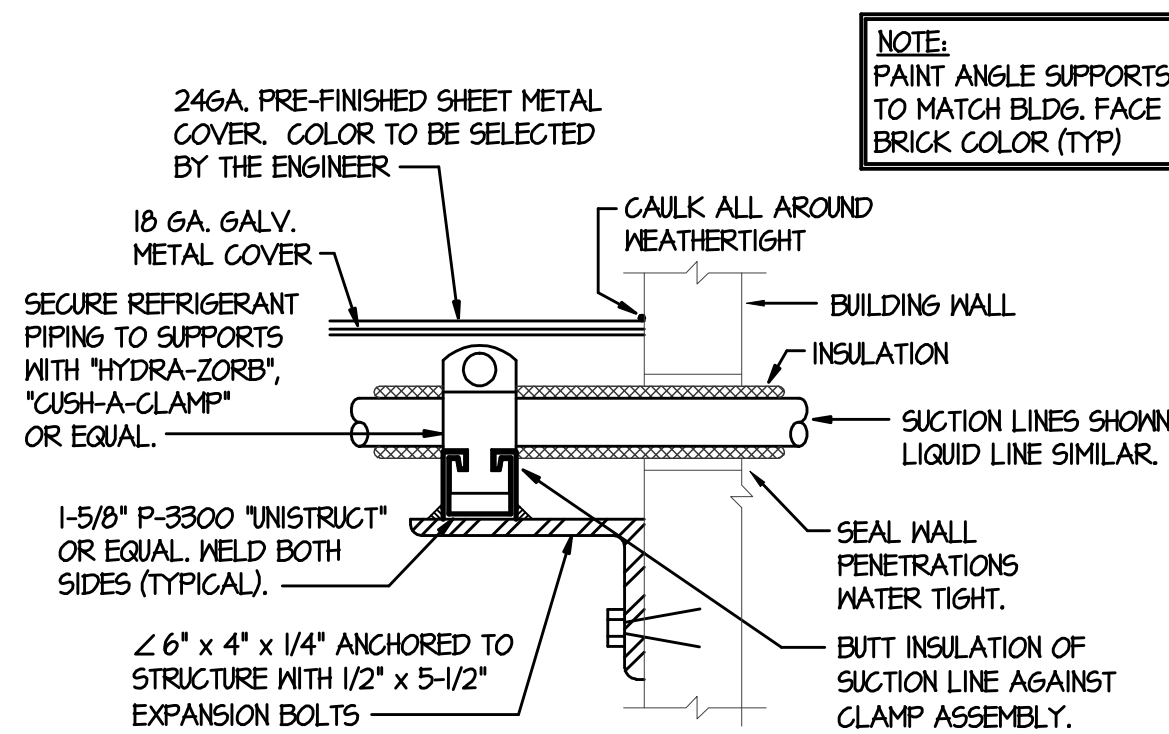
REFRIGERANT COIL CONNECTION DETAIL
NO SCALE



REFRIGERANT PIPING DIAGRAM
NO SCALE

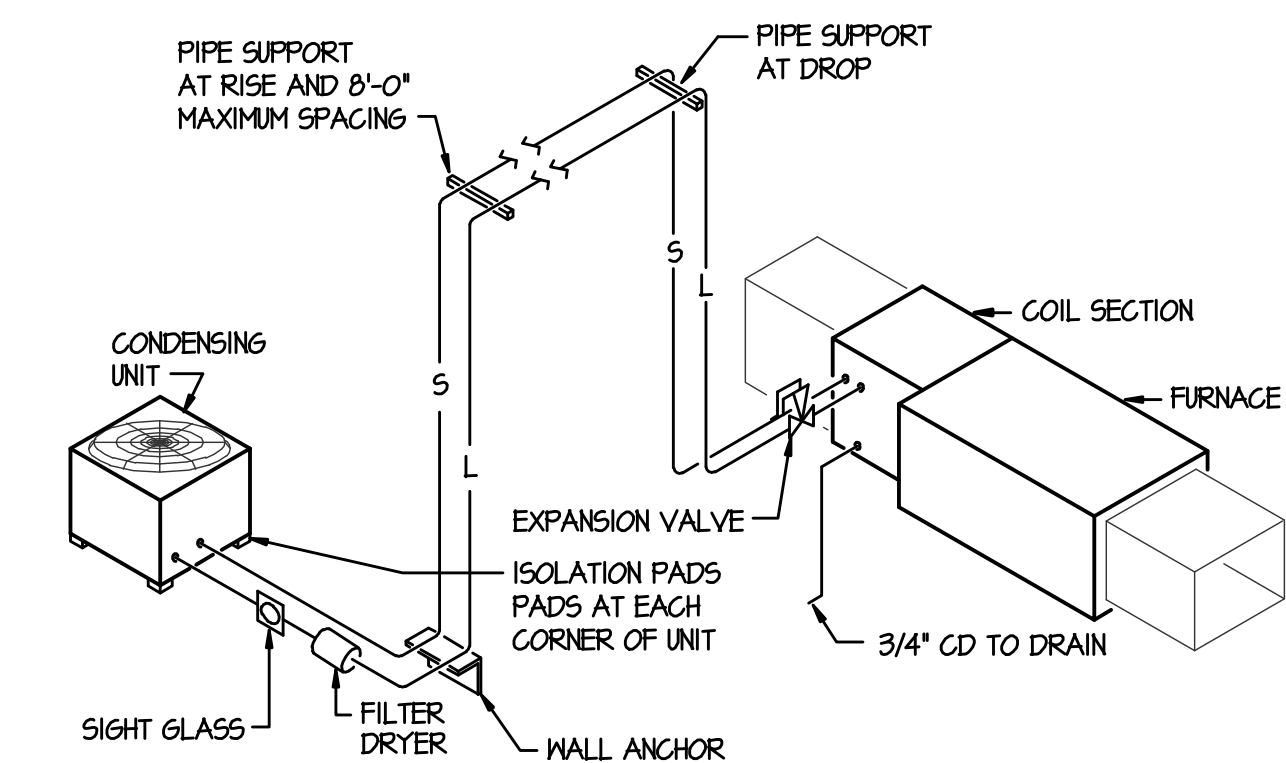


REFRIG. PIPING SUPPORT AT CEILING
NO SCALE



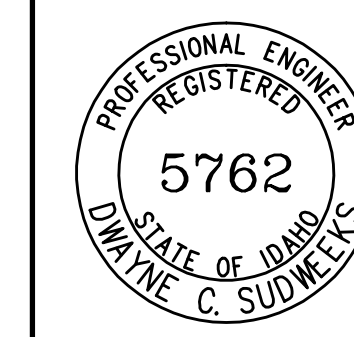
REFRIG. PIPING SUPPORT AT WALL
NO SCALE

REFRIGERANT PIPING LEGEND	
SYMBOL	DESCRIPTION
	LIQUID LINE
	SUCTION LINE
	EXPANSION VALVE
	MOISTURE INDICATING SIGHT GLASS
	FILTER DRYER
	EXTERIOR PIPE SUPPORT
	WALL ANCHOR
	SUSPENDED PIPE SUPPORT
	CONDENSING UNIT



REFRIGERANT PIPING DIAGRAM
NO SCALE

ORIGINAL DRAWING SIGNED BY: DWAYNE C. SUDWEEKS
DATE ORIGINAL SIGNED: JULY 7, 2010
ORIGINAL ON FILE AT ENGINEERED SYSTEMS ASSOCIATES
315 WEST CENTER, POCA TELLO, IDAHO 83204



ESA ENGINEERED SYSTEMS ASSOCIATES
315 WEST CENTER
POCA TELLO, IDAHO 83204
PHONE: (208) 233-0501
FAX: (208) 233-0529
ESA JOB NUMBER: 10040

nbw architects p.a.
ARCHITECTURE / PLANNING / INTERIORS
SCOTT L. NIELSON, A.I.A. KEVIN R. BODILY, A.I.A. JAMES H. WYATT, A.I.A.
980 JOHN DUNN PARKWAY P.O. BOX 2212 - IDAHO FALLS, IDAHO 83402-2212
(208) 746-5222-9779 (208) 746-5222-9779 (208) 746-5222-9779

MODIFICATIONS TO:
PALISADES WARD HVAC FA
RIE IDAHO STAKE

MECHANICAL DETAILS

PROJECT:

REVISIONS

PROJECT NO. 1035-1508
DATE: JULY 2010
DRAWN BY: SDB
CHECKED BY: DCS

DRAWING NO.:

M4.1