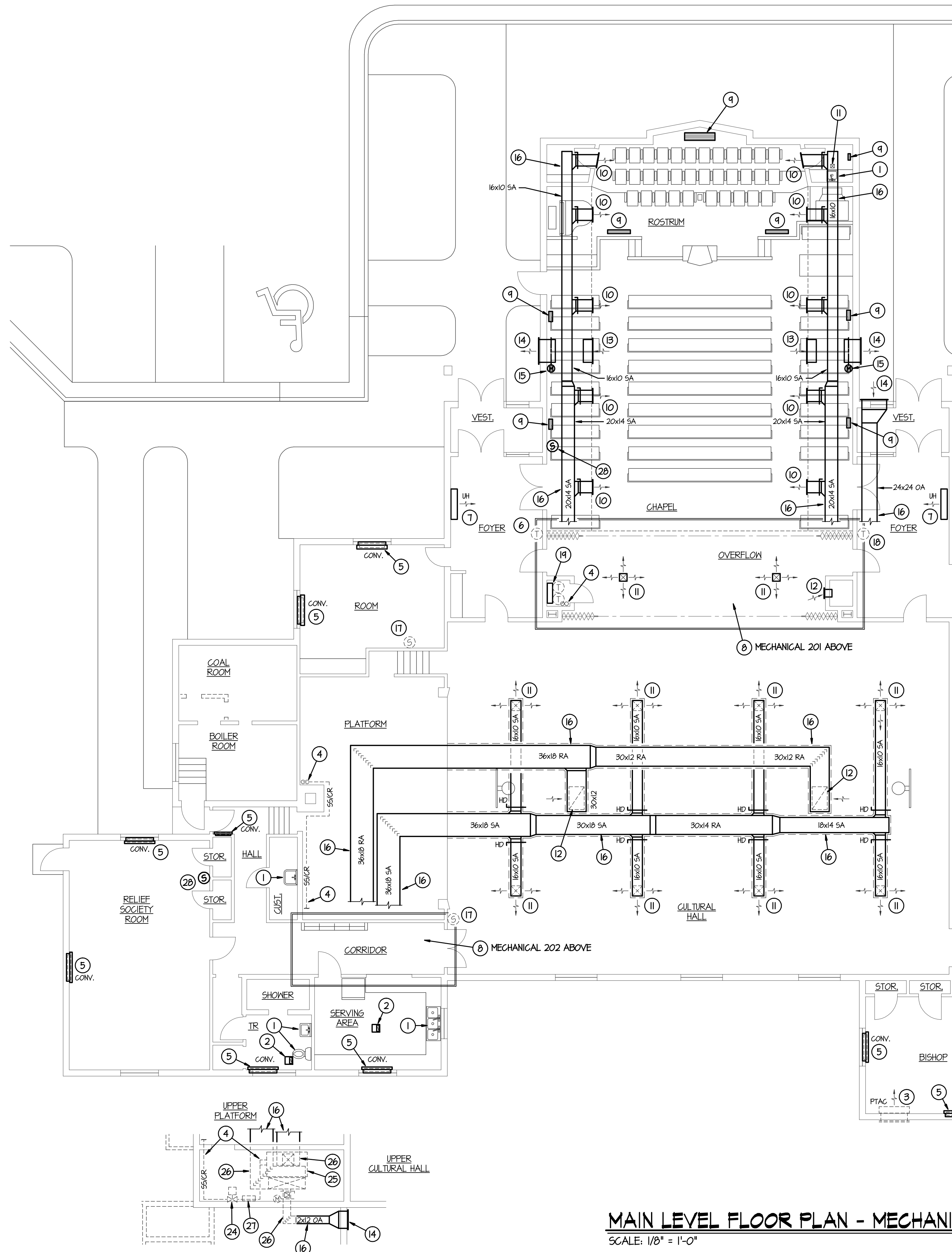
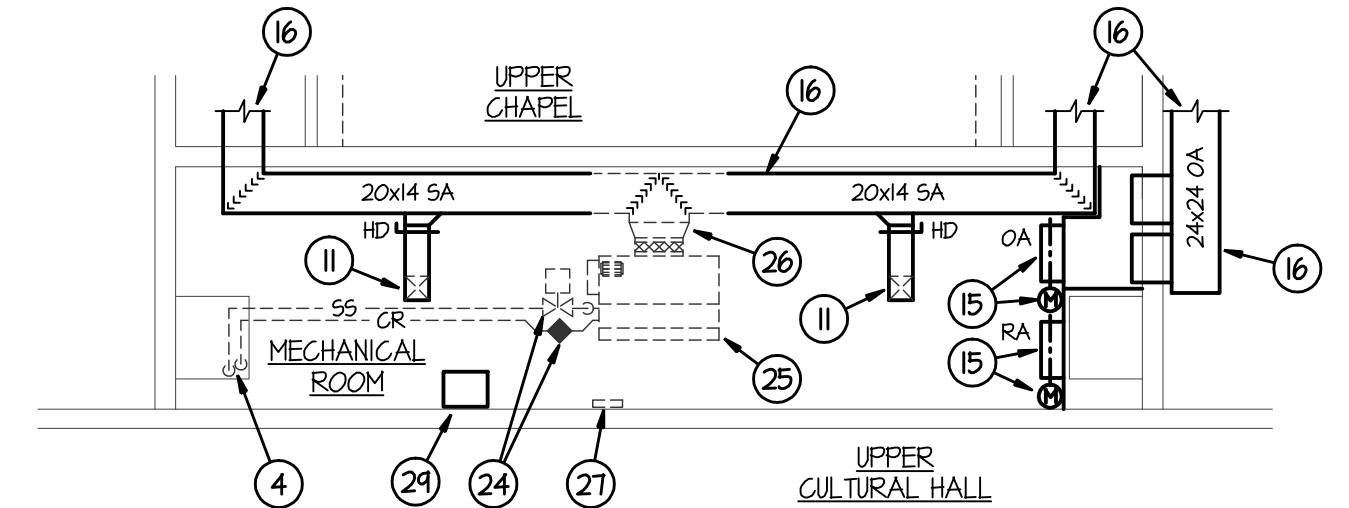


7/7/2010 4:16:48 PM F:\10\10040 LDS Palisades\10040.M1.2.dwg



MAIN LEVEL FLOOR PLAN - MECHANICAL DEMOLITION
SCALE: 1/8" = 1'-0"



UPPER LEVEL MECHANICAL ROOM 201 DEMOLITION PLAN
SCALE: 1/8" = 1'-0"

PLAN NOTES:

- 1 EXISTING PLUMBING FIXTURE TO REMAIN.
- 2 EXISTING EXHAUST FAN TO REMAIN.
- 3 EXISTING "THRU THE WALL" HEATING AND AIR CONDITIONING UNIT TO BE REMOVED. SEE ARCHITECTURAL DRAWINGS FOR PATCHING.
- 4 REMOVE EXISTING STEAM AND CONDENSATE RETURN PIPING TO AIR HANDLING UNIT ON UPPER LEVEL.
- 5 REMOVE STEAM ELEMENT, MOTORIZED VALVE, STEAM TRAP AND RELATED PIPING FROM EXISTING CONVECTOR. ABANDON CONVECTOR CABINET IN PLACE.
- 6 REMOVE EXISTING THERMOSTAT AND INSTALL BLANK COVER OVER OPENING IN WALL.
- 7 ABANDON EXISTING UNIT HEATER IN PLACE, REMOVE MOTORIZED STEAM VALVE, TRAP AND STEAM AND CONDENSATE RETURN PIPES.

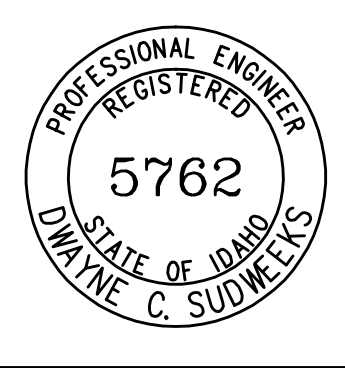
PLAN NOTES:

- 8 FOR WORK IN UPPER MECHANICAL ROOM SEE UPPER LEVEL MECHANICAL ROOM PLANS ON THIS SHEET.
- 9 EXISTING FLOOR RETURN AIR GRILLE TO REMAIN.
- 10 EXISTING SIDEMALL REGISTER TO REMAIN BALANCE TO CFM SHOWN ON SHEET M2.2
- 11 EXISTING CEILING DIFFUSER TO REMAIN. BALANCE TO CFM SHOWN ON SHEET M2.2
- 12 EXISTING SIDEMALL OR CEILING MOUNTED RETURN AIR GRILLE TO REMAIN.
- 13 EXISTING RELIEF AIR GRILLE TO REMAIN.
- 14 EXISTING OUTSIDE LOUVER TO REMAIN.
- 15 EXISTING MOTORIZED RELIEF, RETURN OR OUTSIDE AIR DAMPER TO REMAIN. CONNECT TO NEW T-1350 CONTROL SYSTEM.
- 16 EXISTING DUCTWORK TO REMAIN.
- 17 REPLACE EXISTING REMOTE SENSOR WITH NEW. SEE SHEET M2.2
- 18 REPLACE EXISTING UNIT HEATER THERMOSTAT WITH NEW REMOTE SENSOR. SEE SHEET M2.2.
- 19 EXISTING CENTRAL ATC PANEL TO REMAIN. RELOCATE (2) EXISTING T-1350 THERMOSTATS FOR CHAPEL AND RELIEF SOCIETY ROOM ZONES TO RESPECTIVE MECHANICAL ROOMS AND REMOVE OTHER THERMOSTATS. INSTALL NEW WEBSTAT. SEE SHEET M2.2.
- 20 EXISTING FURNACE AND DX COOLING COIL TO REMAIN. SEE SHEET M2.3 FOR NEW WORK.
- 21 EXISTING CONDENSING UNIT TO REMAIN
- 22 EXISTING CONDENSATE DRAIN PIPING TO REMAIN.
- 23 EXISTING REFRIGERANT PIPING TO REMAIN.
- 24 REMOVE EXISTING STEAM VALVE AND TRAP AT EXISTING MECHANICAL ROOM ON UPPER LEVEL.
- 25 REMOVE EXISTING AIR HANDLING UNIT AND ASSOCIATED DUCT WORK AND PIPING AS SHOWN.
- 26 DISCONNECT EXISTING DUCTWORK FROM EXISTING AIR HANDLER AND REMOVE AS SHOWN.
- 27 EXISTING LOCAL ATC PANEL TO BE REPLACED WITH NEW RELAY PANEL FOR NEW FURNACE SYSTEM.
- 28 EXISTING T-1350 REMOTE SENSOR TO REMAIN.
- 29 EXISTING SOUND CABINET TO REMAIN.

GENERAL NOTES:

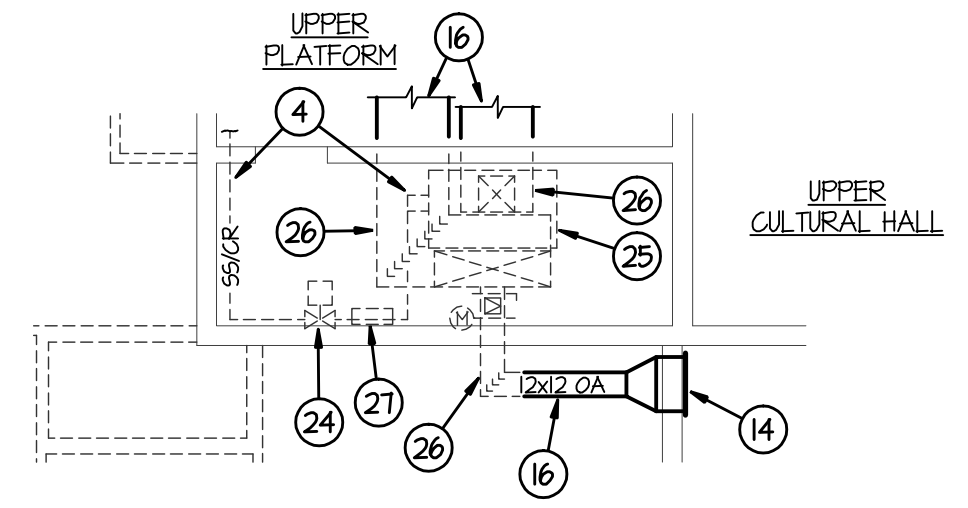
- A- THE CONTRACTOR SHALL CHECK AND VERIFY ALL DIMENSIONS AND CONNECTIONS ON THE JOB. ALL WORK SHALL BE EXECUTED FROM MEASUREMENTS TAKEN AT THE SITE.
- B- THE MECHANICAL CONTRACTOR SHALL BE RESPONSIBLE TO INSURE PROPER CODE CLEARANCES FOR ELECTRICAL AND MECHANICAL ACCESS WHEN INSTALLING ANY EQUIPMENT SUPPLIED BY THE MECH. CONTRACTOR.
- C- IT IS CRITICAL THAT THIS CONTRACTOR COORDINATE EQUIPMENT LOCATION WITH PIPING, DUCTWORK, ELECTRICAL CONDUIT AND BUILDING STRUCTURE TO INSURE CODE COMPLIANCE.

ORIGINAL DRAWING SIGNED BY: DWAYNE C. SUDWIEKS
DATE ORIGINAL SIGNED: July 7, 2010
ORIGINAL ON FILE AT ENGINEERED SYSTEMS ASSOCIATES
315 WEST CENTER, POCA TELLO, IDAHO 83204



ESA ENGINEERED SYSTEMS ASSOCIATES
315 WEST CENTER
POCA TELLO, IDAHO 83204
PHONE: (208) 233-0501
FAX: (208) 233-0529
ESA JOB NUMBER: 10040

UPPER LEVEL MECHANICAL ROOM 202 DEMOLITION PLAN
SCALE: 1/8" = 1'-0"



nbw architects p.a.
ARCHITECTURE / PLANNING / INTERIORS
SCOTT L. NIELSON, A.I.A. KEVIN R. BODILY, A.I.A. JAMES H. WYATT, A.I.A.
900 JOHN DUNN PARKWAY P.O. BOX 2212 - IDAHO FALLS, IDAHO 83402-2212
OF 208-522-9779 OF 208-522-9785 (OO) nbw-architects.com

MODIFICATIONS TO:
PALISADES WARD HVAC FA
RIE IDAHO STAKE
MECHANICAL DEMOLITION MAIN AND UPPER LEVEL PLANS

REVISIONS

PROJECT NO. 1035-1508
DATE: JULY 2010
DRAWN BY: SDD
CHECKED BY: DCS

DRAWING NO.: **M1.2**