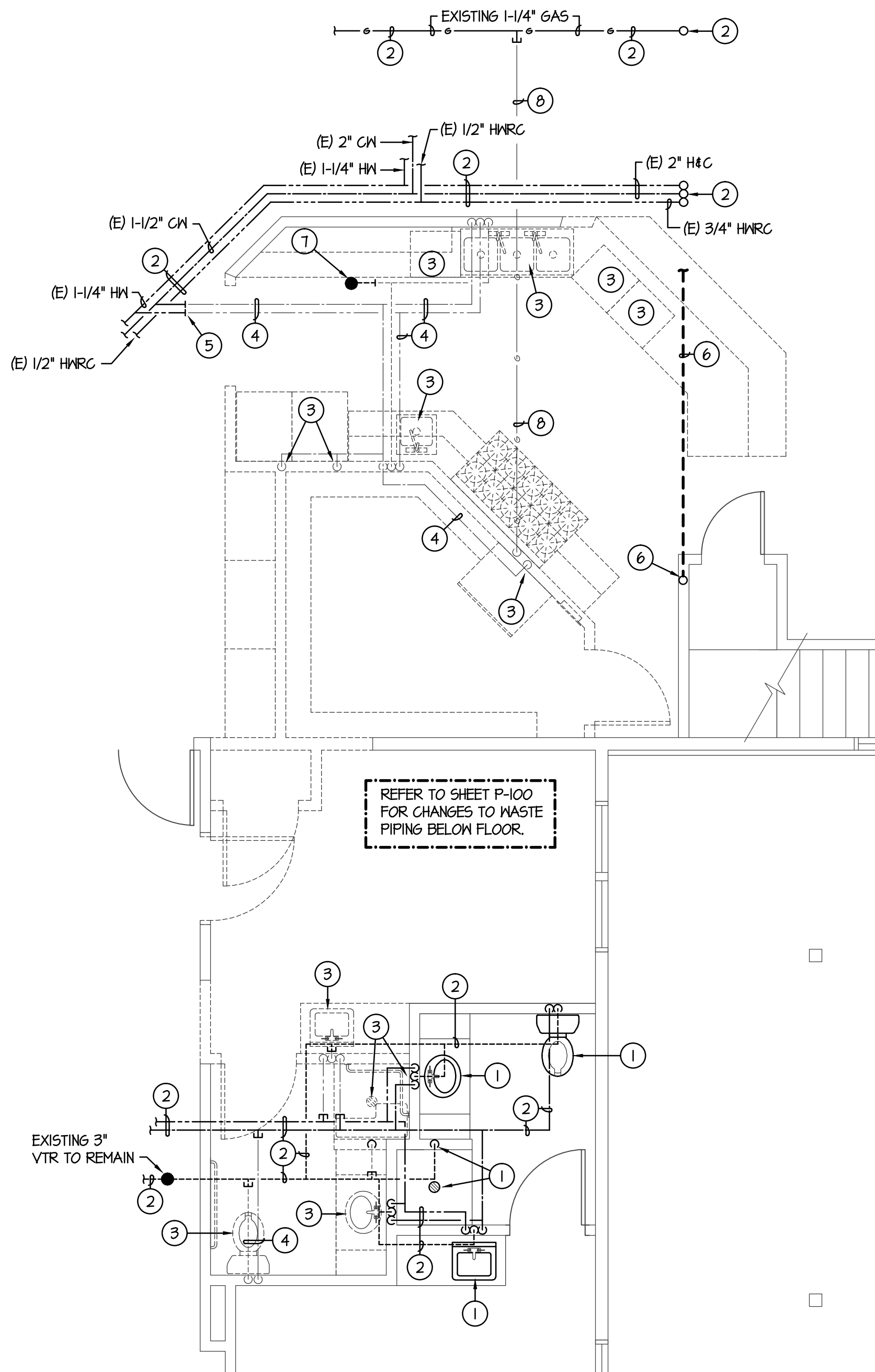


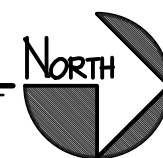
C
B
A

File: F:\17A\17045 Homestead Bldg 3\17045-P201.dwg Oct 03, 2017 1:04pm By: Mike

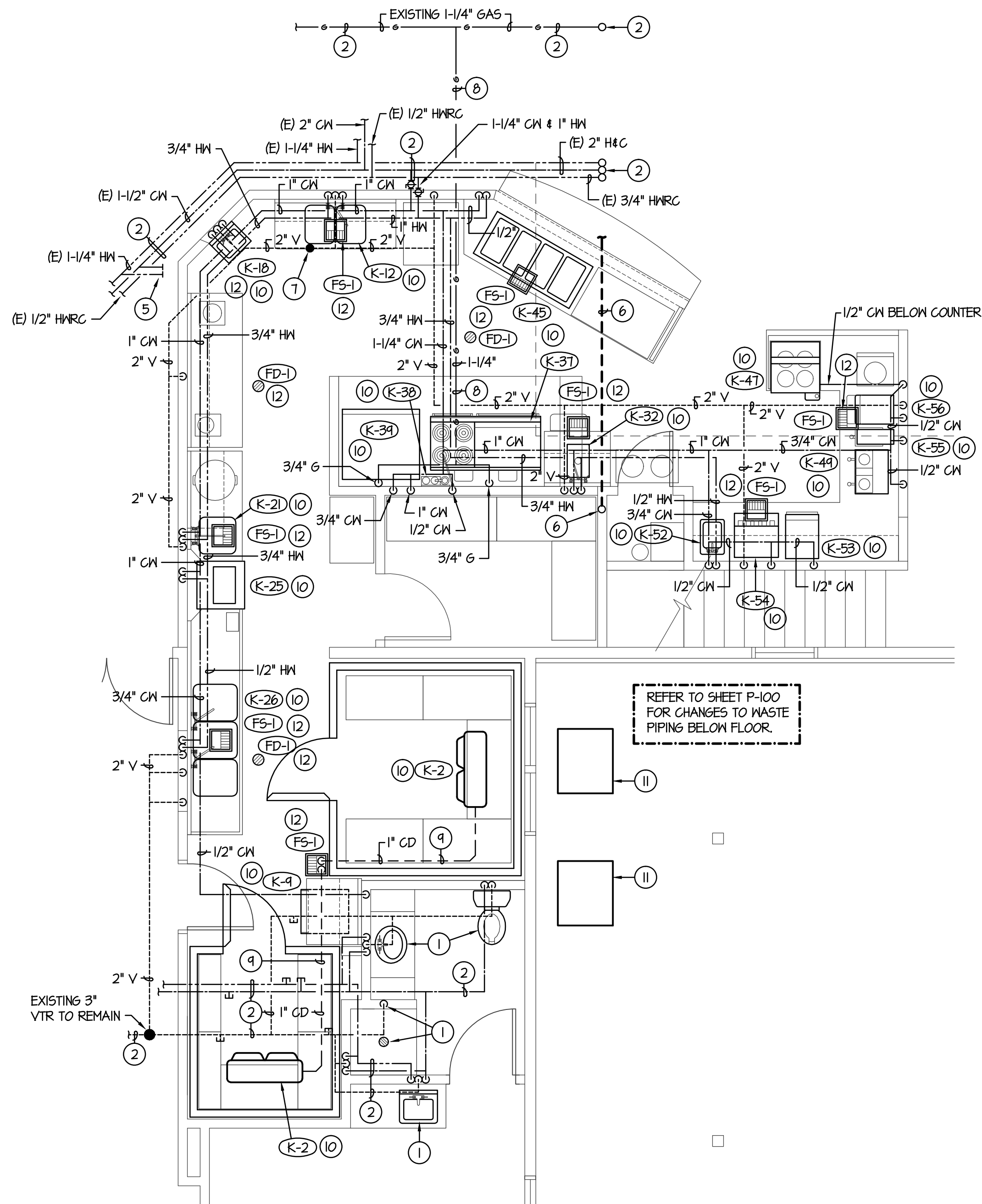


LARGE SCALE KITCHEN DEMO PLAN

SCALE: 1/4" = 1'-0"

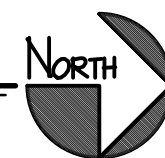


FIXTURE SCHEDULE					
SYM.	DESCRIPTION	HOT	COLD	WASTE	VENT
(K-44)	COFFEE BREWER - KIT. EQUIP. #41 BY KEC. ROUGH-IN AND CONNECT 1/2" COLD WATER LINES WITH SHUT-OFF VALVE. RUN DRAIN LINE TO NEAREST FLOOR SINK.	---	1/2"	3/4" INDIRECT	---
(K-52)	DUMP SINK - KIT. EQUIP. #52 BY KEC. ROUGH-IN AND CONNECT 1/2" HOT AND COLD WATER LINES WITH SHUT-OFF VALVE. RUN DRAIN LINE TO NEAREST FLOOR SINK.	1/2"	1/2"	1-1/2" INDIRECT	---
(K-53)	ICE AND WATER DISPENSER - KIT. EQUIP. #53 BY KEC. ROUGH-IN AND CONNECT 1/2" COLD WATER LINES WITH SHUT-OFF VALVE. RUN DRAIN LINE TO NEAREST FLOOR SINK.	---	1/2"	1" INDIRECT	---
(K-54)	SODA DISPENSER - KIT. EQUIP. #54 BY KEC. ROUGH-IN AND CONNECT 1/2" COLD WATER LINE WITH SHUT-OFF VALVE. RUN DRAIN LINE TO NEAREST FLOOR SINK.	---	1/2"	1" INDIRECT	---
(K-55)	HOT CHOCOLATE DISPENSER - KIT. EQUIP. #55 BY KEC. ROUGH-IN AND CONNECT 1/2" COLD WATER LINE WITH SHUT-OFF VALVE. RUN DRAIN LINE TO NEAREST FLOOR SINK.	---	1/2"	3/4" INDIRECT	---
(K-56)	JUICE DISPENSER - KIT. EQUIP. #56 BY KEC. ROUGH-IN AND CONNECT 1/2" COLD WATER LINE WITH SHUT-OFF VALVE. RUN DRAIN LINE TO NEAREST FLOOR SINK.	---	1/2"	3/4" INDIRECT	---



LARGE SCALE KITCHEN PLUMBING PLAN

SCALE: 1/4" = 1'-0"



FIXTURE SCHEDULE					
SYM.	DESCRIPTION	HOT	COLD	WASTE	VENT
(K-32)	UTILITY SINK - KIT. EQUIP. #32 BY KEC. ROUGH-IN AND CONNECT 1/2" HOT AND COLD WATER LINES WITH SHUT-OFF VALVES. RUN DRAIN LINE TO NEAREST FLOOR SINK.	1/2"	1/2"	1-1/2" INDIRECT	---
(K-37)	GRIDDLE/RANGE - KIT. EQUIP. #37 BY KEC. ROUGH-IN AND CONNECT 3/4" GAS LINE WITH SHUT-OFF VALVE AND FLEXIBLE HOSE. REFER TO DETAIL H/P-301 FOR INSTALLATION. (310,000 BTU)	---	---	---	---
(K-38)	WATER FILL FAUCET - KIT. EQUIP. #38 BY KEC. ROUGH-IN AND CONNECT 1/2" COLD WATER LINE.	---	1/2"	---	---
(K-39)	COMBI OVEN - KIT. EQUIP. #39 BY KEC. ROUGH-IN AND CONNECT 1" CW TO DRAIN INJECTOR AND 3/4" COLD WATER LINE TO UNIT. RUN DRAIN LINE TO FLOOR SINK. ROUGH-IN AND CONNECT 3/4" GAS LINE WITH SHUT-OFF VALVE AND FLEXIBLE HOSE. REFER TO DETAIL H/P-301. (168,000 BTU)	---	1" & 3/4"	2" INDIRECT	---
(K-45)	HOT FOOD WARMER - KIT. EQUIP. #45 BY KEC. ROUGH-IN AND CONNECT 1/2" HOT AND COLD WATER LINES WITH SHUT-OFF VALVES. RUN DRAIN LINE TO NEAREST FLOOR SINK.	1/2"	1/2"	1" INDIRECT	---
(K-47)	ICE CREAM DIPPER WELL - KIT. EQUIP. #47 BY KEC. ROUGH-IN AND CONNECT 1/2" COLD WATER LINE WITH SHUT-OFF VALVE. RUN DRAIN LINE TO NEAREST FLOOR SINK.	---	1/2"	3/4" INDIRECT	---

FIXTURE SCHEDULE					
SYM.	DESCRIPTION	HOT	COLD	WASTE	VENT
(K-2)	FREEZER/COOLER UNITS - KIT. EQUIP. #2 BY KEC. RUN DRAIN LINES FROM COMPRESSOR UNITS TO NEAREST FLOOR SINK.	---	---	1" INDIRECT	---
(K-9)	UNDER COUNTER ICE MAKER AND BIN - KIT. EQUIP. #4 BY KEC. ROUGH-IN AND CONNECT 1/2" COLD WATER LINE WITH SHUT-OFF VALVE. RUN DRAIN LINE TO NEAREST FLOOR SINK.	---	1/2"	3/4" INDIRECT	---
(K-12)	PREP SINK - KIT. EQUIP. #12 BY KEC. ROUGH-IN AND CONNECT 1/2" HOT AND COLD WATER LINES WITH SHUT-OFF VALVE. RUN DRAIN LINE TO NEAREST FLOOR SINK.	1/2"	1/2"	1-1/2" INDIRECT	---
(K-18)	WALL MOUNTED HAND WASH SINK - KIT. EQUIP. #8 BY KEC. ROUGH-IN AND CONNECT 1/2" HOT AND COLD WATER LINES WITH SHUT-OFF VALVES AND 1-1/2" WASTE AND VENT LINES WITH P-TRAP.	1/2"	1/2"	1-1/2" INDIRECT	1-1/2"
(K-21)	PRE-RINSE SINK AND SPRAY - KIT. EQUIP. #21 & #23 BY KEC. ROUGH-IN 1/2" HOT AND COLD WATER LINES TO FAUCET. RUN DRAIN LINE TO NEAREST FLOOR SINK.	1/2"	1/2"	1-1/2" INDIRECT	---
(K-25)	VENTLESS DISHWASHER - KIT. EQUIP. #25 BY KEC. ROUGH-IN AND CONNECT 1/2" HOT AND COLD WATER LINES WITH SHUT-OFF VALVES. RUN DRAIN LINE TO NEAREST FLOOR SINK.	1/2"	1/2"	1-1/2" INDIRECT	---
(K-26)	TRIPLE COMPARTMENT SINK & SPRAY NOZZLE - KIT. EQUIP. #26 BY KEC. ROUGH-IN AND CONNECT 1/2" HOT AND COLD WATER LINES WITH SHUT-OFF VALVES. RUN DRAIN LINE TO NEAREST FLOOR SINK.	1/2"	1/2"	1-1/2" INDIRECT	---

PLAN NOTES:

- EXISTING PLUMBING FIXTURE TO REMAIN. PROTECT DURING CONSTRUCTION AND MAINTAIN CONNECTION TO EXISTING WASTE, WATER, AND VENT PIPING.
- ALL EXISTING VENT AND WATER PIPING ABOVE CEILING TO REMAIN UNLESS NOTED OTHERWISE. MAINTAIN CONNECTION OF EXISTING PIPING TO EXISTING FIXTURES TO REMAIN. FIELD VERIFY EXACT SIZE AND LOCATIONS OF ALL EXISTING PIPING. COORDINATE WITH NEW CONSTRUCTION AND RE-ROUTE ANY LINE REQUIRED FOR NEW WALLS AND CEILINGS.
- DISCONNECT EXISTING FIXTURE FROM WASTE, WATER AND VENT PIPING. REMOVE FIXTURE. CAP EXISTING WASTE LINE BELOW FLOOR. REMOVE EXISTING WATER AND VENT PIPING UP WALL AND ABOVE CEILING BACK TO MAIN LINE. CAP EACH LINE NEAR MAIN LINE. DELIVER EXISTING FIXTURE TO OWNER.
- REMOVE EXISTING PIPING FROM ABOVE CEILING. FIELD VERIFY EXACT SIZE AND LOCATION OF PIPING. REFER TO LARGE SCALE KITCHEN PLUMBING PLAN (THIS SHEET) FOR NEW PIPING TO BE CONNECTED TO EXISTING.
- CUT AND CAP EXISTING 3/4" HOT AND COLD WATER LINES AT THIS POINT. FIELD VERIFY EXACT SIZE AND LOCATION OF PIPING.
- EXISTING 2" WASTE LINE UP IN WALL AND ALL WASTE PIPING IN CEILING SPACE TO REMAIN. FIELD VERIFY EXACT LOCATION OF WASTE PIPING CONNECTED TO FIXTURES ON UPPER LEVEL AND PROTECT DURING CONSTRUCTION.
- EXISTING 2" VTR TO REMAIN. DISCONNECT FROM EXISTING FIXTURES BEING REMOVED AND RECONNECT TO NEW FIXTURES BEING INSTALLED. FIELD VERIFY EXACT SIZE AND LOCATION OF EXISTING VENT.
- REPLACE EXISTING 1/2" GAS LINE BACK TO MAIN 1-1/4" LINE WITH NEW 1" LINE.
- RUN DRAIN LINE FROM CONDENSER UNIT TO FLOOR SINK AS SHOWN. PROVIDE HEAT TRACE ON ALL LINES WITHIN THE CONFINES OF THE FREEZER OR COOLER.
- KIT. EQUIP. PROVIDED AND INSTALLED BY KIT. EQUIP. CONTRACTOR. PLUMBING CONTRACTOR TO ROUGH-IN AND CONNECT ALL WATER, WASTE AND VENT PIPING TO FIXTURES. REFER TO KITCHEN PLANS F5-100 AND F5-103 FOR EQUIPMENT AND PIPING LOCATIONS AND SIZES.
- REMOTE CONDENSERS FOR FREEZER AND COOLING UNITS AND ALL ASSOCIATED REFRIGERANT PIPING BY KITCHEN EQUIPMENT CONTRACTOR.
- ALL FLOOR DRAINS, FLOOR SINKS, HAND WASH SINKS, ETC. (EXCEPT THE DISHWASHER) TO BE CONNECTED TO EXISTING 4" WASTE LINE GOING TO THE EXISTING GREASE INTERCEPTOR. REFER TO SHEET P-100 FOR UNDER FLOOR WASTE PIPING IN KITCHEN AREA.

HOMESTEAD BUILDING #3 ADDITION

407 W. 1ST N.

REXBURG ID

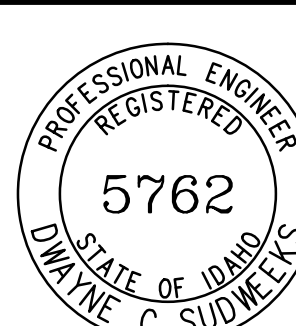
PERMIT SET 10/03/2017

FFKR ARCHITECTS

730 Pacific Avenue • Salt Lake City, Utah 84104
© 801.521.5186 • FFKR.COM

LARGE SCALE KITCHEN PLANS

P-201



Engineered Systems Associates
1355 EAST CENTER
POCATELLO, IDAHO 83201
PHONE: (208) 233-0501
FAX: (208) 233-0529
EMAIL: esa@engsystems.com
ESA JOB NUMBER: 17045

ORIGINAL DRAWING SIGNED BY: DWAYNE C. SUDWEES
DATE ORIGINAL SIGNED: Oct 03, 2017
ORIGINAL ON FILE AT ENGINEERED SYSTEMS ASSOCIATES
1355 EAST CENTER, POCATELLO, IDAHO 83201

DATE	REVISION

PROJECT NUMBER 170406