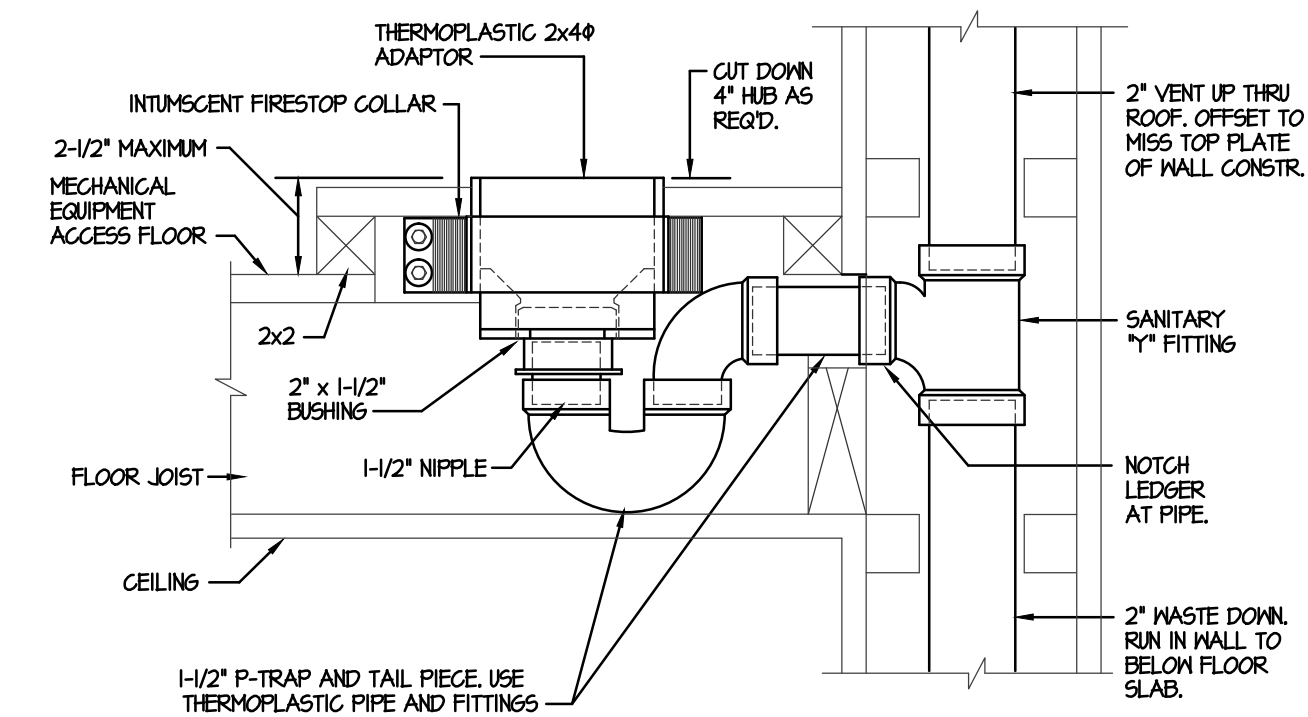


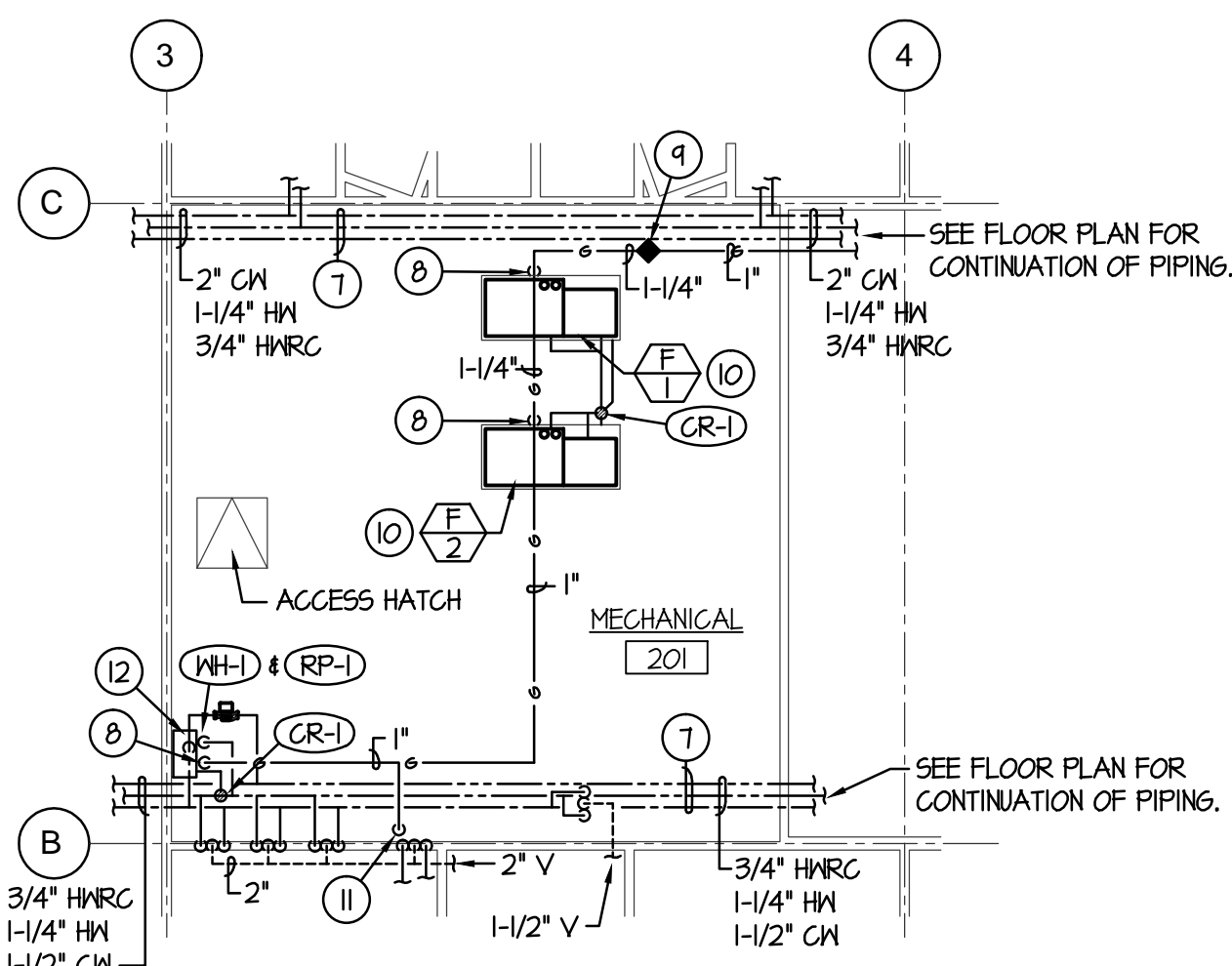
PLUMBING FLOOR PLAN

SCALE: 1/8" = 1'-0"



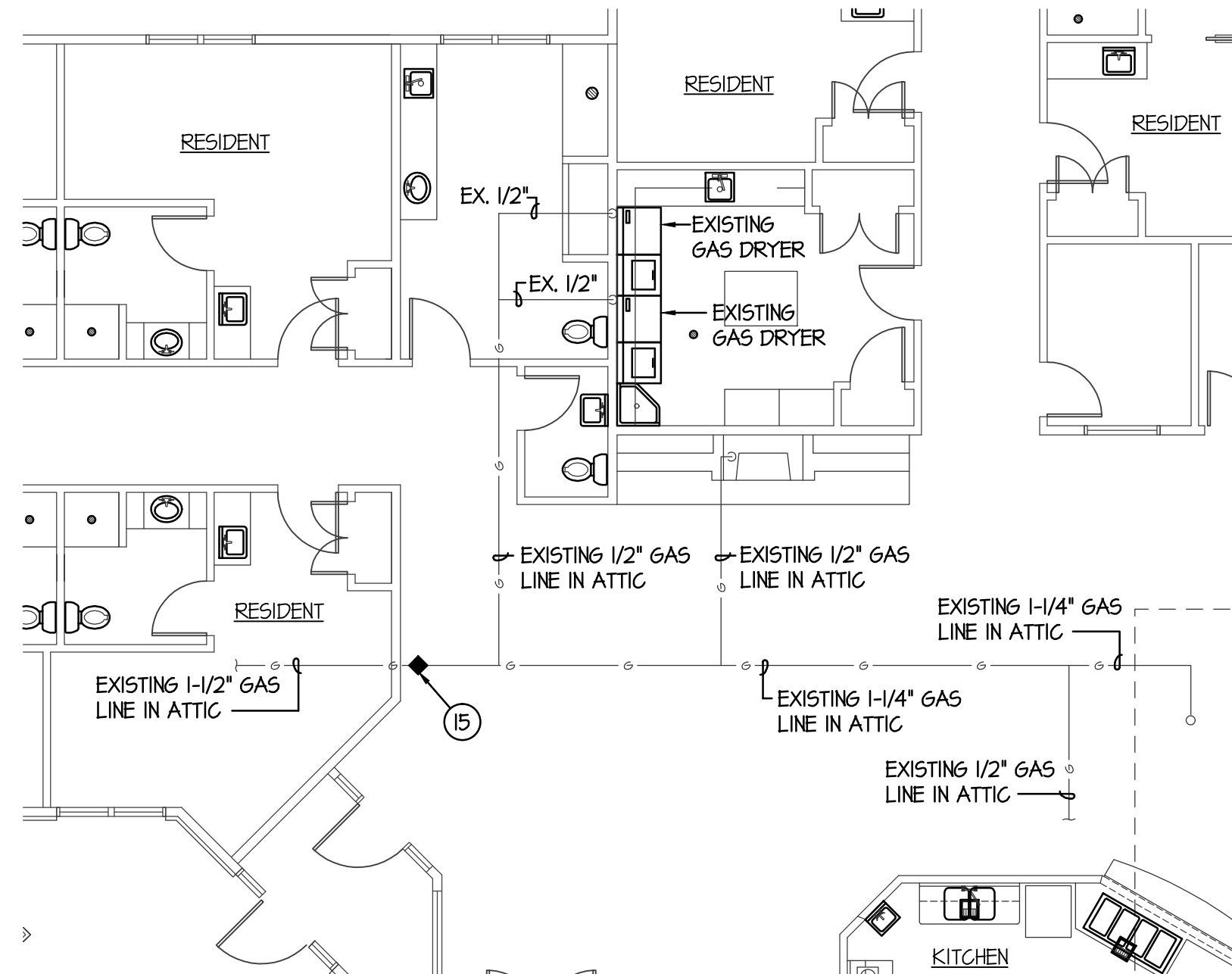
CONDENSATE RECEIVER DETAIL

NO SCALE



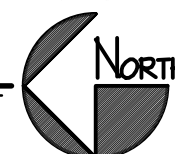
PLUMBING MEZZANINE PLAN

SCALE: 1/8" = 1'-0"



PARTIAL EXISTING BUILDING PLUMBING PLAN

SCALE: 1/8" = 1'-0"



PLAN NOTES:

1. NEW GAS METER BY LOCAL GAS COMPANY. SIZE METER FOR 2500,000 BTU WITH 2 PSI DELIVERY PRESSURE. INSTALL NEW METER BEFORE REMOVING EXISTING METER.
2. RUN NEW 1-1/2" GAS LINE (2 PSI) BELOW GRADE TO EXISTING FIRE RISER ROOM. RISE GAS LINE UP OUTSIDE AND EXTEND INTO ROOM. RISE UP TO ABOVE CEILING.
3. CONNECT NEW 1-1/2" GAS LINE (2 PSI) TO EXISTING 1-1/2" GAS LINE ABOVE CEILING. (LINE WILL BE 2 PSI) FIELD VERIFY EXACT LOCATION AND SIZE OF EXISTING GAS PIPING. PRESSURE TEST EXISTING PIPING AS PER NEW PIPE FOR INCREASED PRESSURE.
4. EXISTING 1-1/2" GAS LINE IN ATTIC SPACE TO REMAIN. (LINE WILL BE 2 PSI) FIELD VERIFY EXACT SIZE AND LOCATION OF EXISTING PIPING. PRESSURE TEST EXISTING PIPING AS PER NEW PIPE FOR INCREASED PRESSURE.
5. DISCONNECT AND REMOVE EXISTING GAS METER AFTER NEW METER AND PIPING HAVE BEEN INSTALLED TO ENSURE CONTINUOUS OPERATION OF EXISTING EQUIPMENT.
6. CONNECT NEW 2" COLD WATER LINE TO EXISTING 2-1/2" COLD WATER LINE ABOVE CEILING. PROVIDE SHUT-OFF VALVE IN NEW LINE. FIELD VERIFY EXACT SIZE AND LOCATION OF EXISTING WATER PIPING.
7. PIPING SHOWN HERE FOR CLARITY. ALL PIPING TO BE RUN ABOVE CEILING OF RESIDENT ROOMS AND BATHROOMS, BUT IN WARM SPACE. FIELD VERIFY LOCATION OF BUILDING INSULATION AND KEEP PIPING WITHIN WARM SPACES. PROVIDE ISOLATION VALVES AT EACH RESIDENT ROOM AS SHOWN. REFER TO REFLECTED CEILING PLAN FOR ACCESS TO VALVES THRU CEILING.
8. DROP GAS LINE DOWN AND CONNECT TO EQUIPMENT WITH SHUT-OFF VALVE, DRIP LEG, AND FLEXIBLE HOSE. REFER TO DETAIL FIP-301 FOR TYPICAL GAS LINE CONNECTION TO EQUIPMENT.
9. PROVIDE PRESSURE REGULATOR IN GAS LINE. VENT AS RECOMMENDED BY MANUFACTURER.
10. HORIZONTAL FURNACE AND COOLING COIL SUPPLIED AND INSTALLED BY MECHANICAL CONTRACTOR. PLUMBING CONTRACTOR TO ROUGH-IN AND CONNECT 3/4" GAS LINE WITH SHUT-OFF VALVE AND FLEXIBLE HOSE TO EACH UNIT. REFER TO DETAIL FIP-301 FOR TYPICAL GAS LINE CONNECTION. RUN DRAIN LINES FROM BOTH FURNACE AND DX COOLING COIL AND FROM SECONDARY DRAIN PAN TO CONDENSATE RECEIVER AS SHOWN. REFER TO PIPING DIAGRAM E/P-301 FOR TYPICAL FURNACE PIPING.
11. DROP 3/4" GAS LINE DOWN INTO LAUNDRY ROOM. RUN PIPING AT 18" ABOVE FLOOR BEHIND DRYERS. CONNECT GAS LINE TO (3) DRYERS. PROVIDE SHUT-OFF VALVE AND FLEXIBLE HOSE AT EACH PIECE OF EQUIPMENT. REFER TO DETAIL FIP-301 FOR TYPICAL GAS LINE CONNECTION.
12. PROVIDE AND INSTALL GAS FIRED WATER HEATER COMPLETE WITH RECIRCULATING PUMP. REFER TO DETAIL C/P-301 FOR TYPICAL WATER HEATER PIPING CONNECTIONS. RUN DRAIN LINE FROM WATER HEATER TO CONDENSATE RECEIVER AS SHOWN.
13. RUN 3/4" HOT AND COLD WATER LINES TO EACH ROOM AS SHOWN. PROVIDE SHUT-OFF VALVES IN EACH LINE. REFER TO ARCHITECT'S PLANS FOR CEILING ACCESS AND LOCATE PIPING AND VALVES ABOVE ACCESS PANELS.
14. FIXTURES ON EXTERIOR WALLS TO HAVE PIPING RUN WITHIN BUILDING ENVELOPE. REFER TO DETAIL G/P-301 FOR TYPICAL PIPE INSULATION.
15. PROVIDE AND INSTALL NEW PRESSURE REGULATOR IN EXISTING 1-1/2" GAS LINE ABOVE CEILING (BUT ON IN ATTIC SPACE). FIELD VERIFY EXACT SIZE AND LOCATION OF EXISTING PIPING. REGULATOR TO BE INSTALLED UPSTREAM OF ANY EQUIPMENT TAKE-OFF AND TO BE IN AN ACCESSIBLE LOCATION. REFER TO ARCHITECTURAL DRAWINGS FOR NEW CEILING ACCESS FOR REGULATOR.

ORIGINAL DRAWING SIGNED BY: DWAYNE C. SUDMEERS
DATE ORIGINAL SIGNED: Oct 03, 2017
ORIGINAL ON FILE AT ENGINEERED SYSTEMS ASSOCIATES
1355 EAST CENTER, POCA TELLO, IDAHO 83201



Engineered Systems Associates
1355 EAST CENTER
POCA TELLO, IDAHO 83201
PHONE: (208) 233-0501
FAX: (208) 233-0529
EMAIL: esa@engsystems.com
ESA JOB NUMBER: 17045

HOMESTEAD BUILDING #3 ADDITION

407 W. 1ST N.

REXBURG ID

PERMIT SET 10/03/2017

DATE	REVISION

PROJECT NUMBER 170406

PLUMBING FLOOR PLAN

P-101

FFKR ARCHITECTS

730 Pacific Avenue • Salt Lake City, Utah 84104
© 801.521.6186 • FFKR.COM