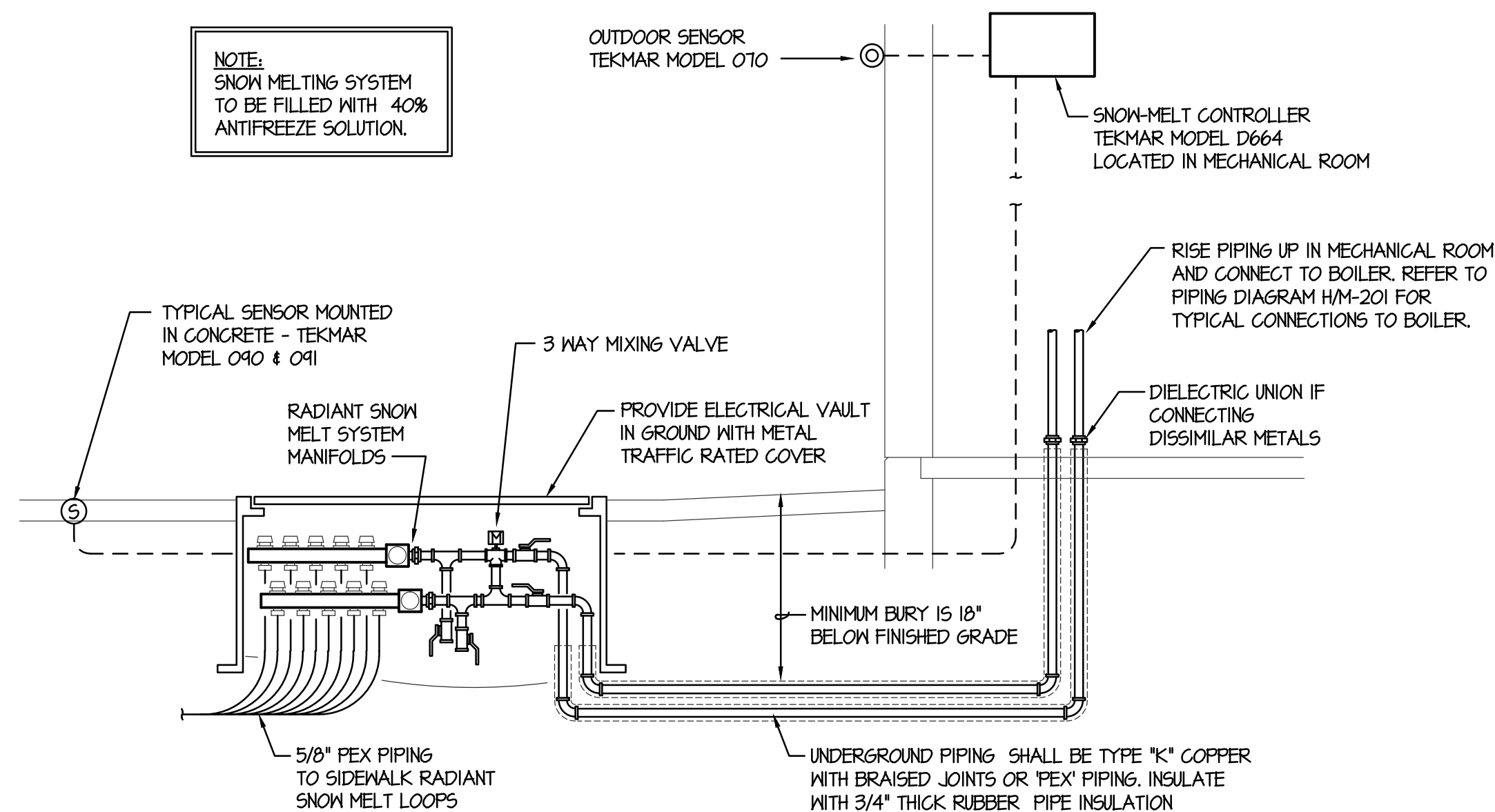
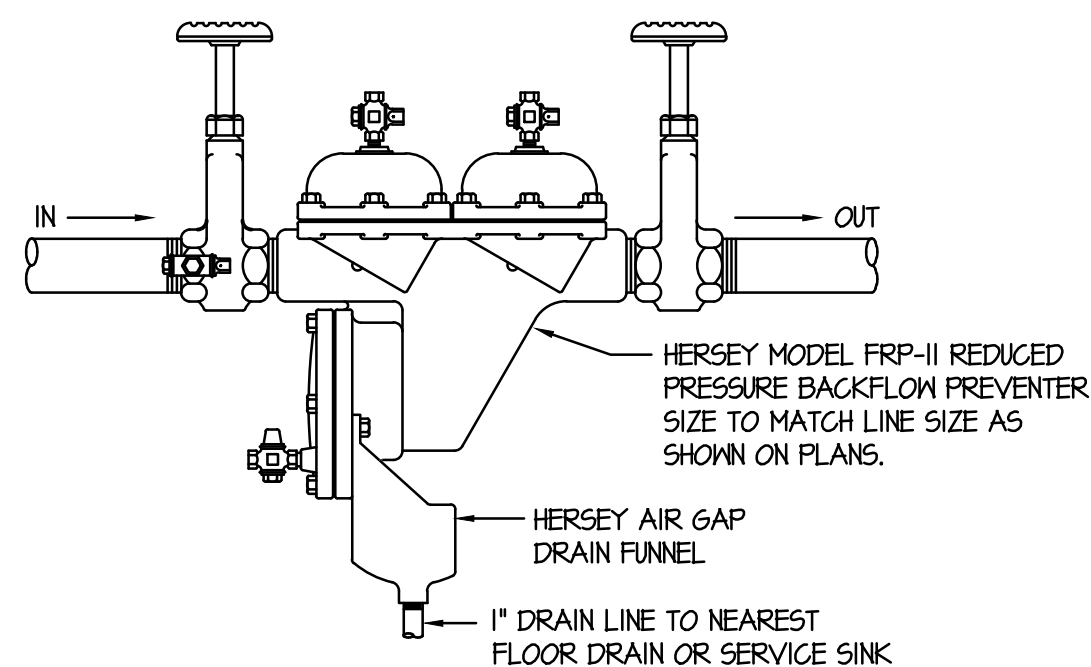
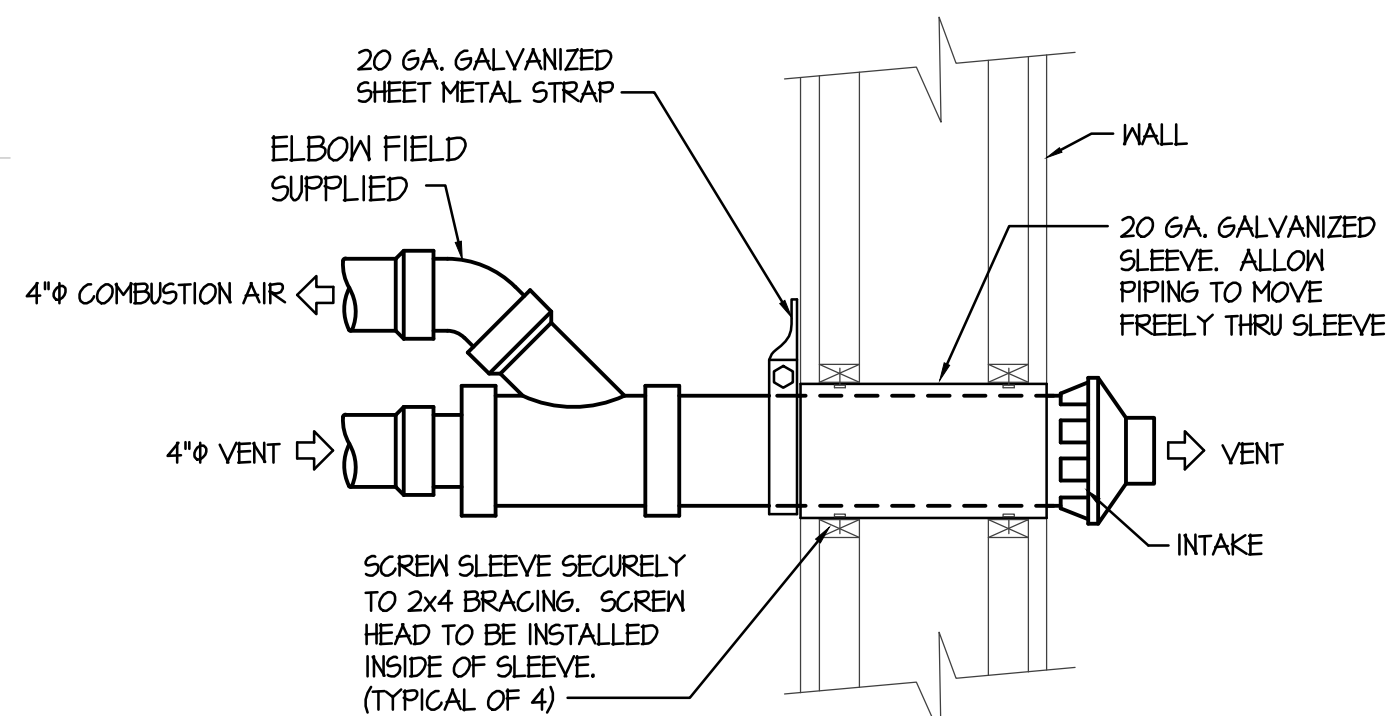


ENLARGED BOILER ROOM

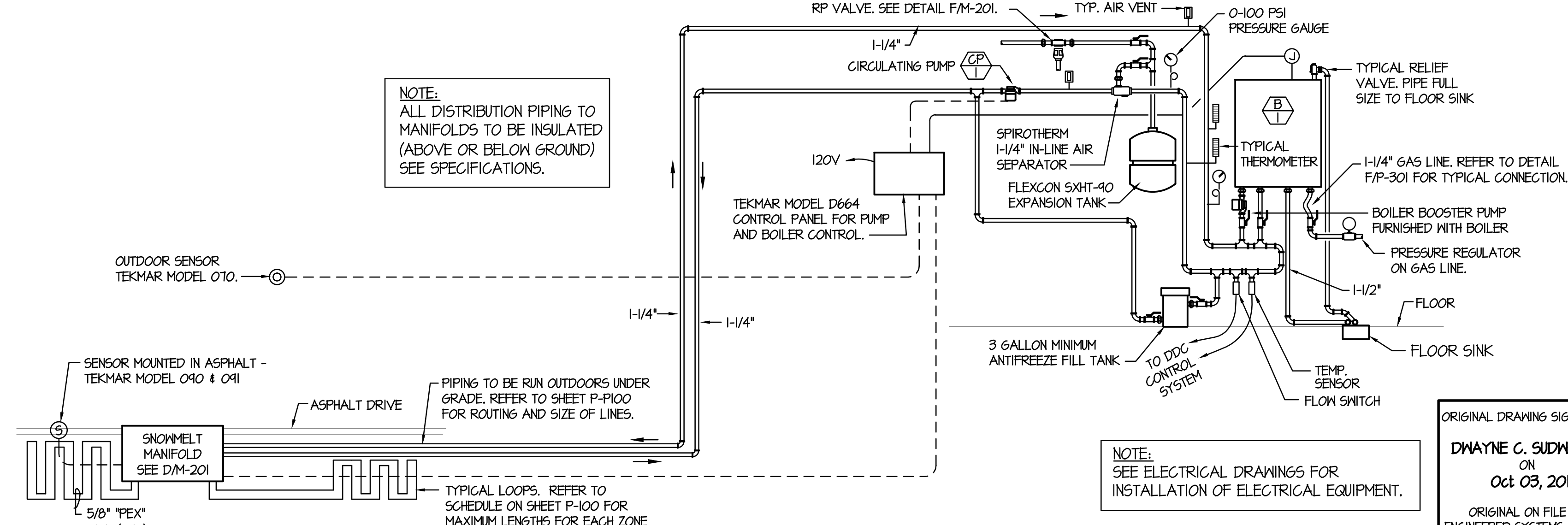


D SNOW MELT MANIFOLD BOX DETAIL





H SNOW MELT SYSTEM PIPING DIAGRAM



SNOW MELT DESIGN

LOCATION	REXBURG, IDAHO
OUTDOOR DESIGN TEMP.	-15°F
PIPING LAYOUT	5/8" ID PEX @ 9" O.C.
FLUID TYPE	40% GLYCOL
TOTAL FLOOR AREA	963 SQ. FT.
TOTAL HEAT LOAD	144,450 BTH
SUPPLY WATER TEMP.	120° F
TEMPERATURE DROP	20° F
SURFACE TEMPERATURE	83° F
BTU/HR/SQFT	150 BTH
TOTAL FLOW	12 GPM

ORIGINAL DRAWING SIGNED BY:
DWAYNE C. SUDWEEKS
ON
Oct 03, 2017
ORIGINAL ON FILE AT
ENGINEERED SYSTEMS, ASSOC.
1355 EAST CENTER,
POCATELLO, IDAHO 83201



Engseed Systems Associates

1355 EAST CENTER
POCATELLO, IDAHO 83201

PHONE: (208) 233-0501

FAX: (208) 233-0529

EMAIL: esa@engseed.com

ESA JOB NUMBER: 17045

HOMESTEAD BUILDING #3 ADDITION

407 W. 1ST N.

REXBURG ID

PERMIT SET 10/03/2017

FFKR ARCHITECTS

730 Pacific Avenue • Salt Lake City, Utah 84104
© 801.521.6186 • FFKR.COM

SNOW MELT DETAILS AND DIAGRAMS

M-201