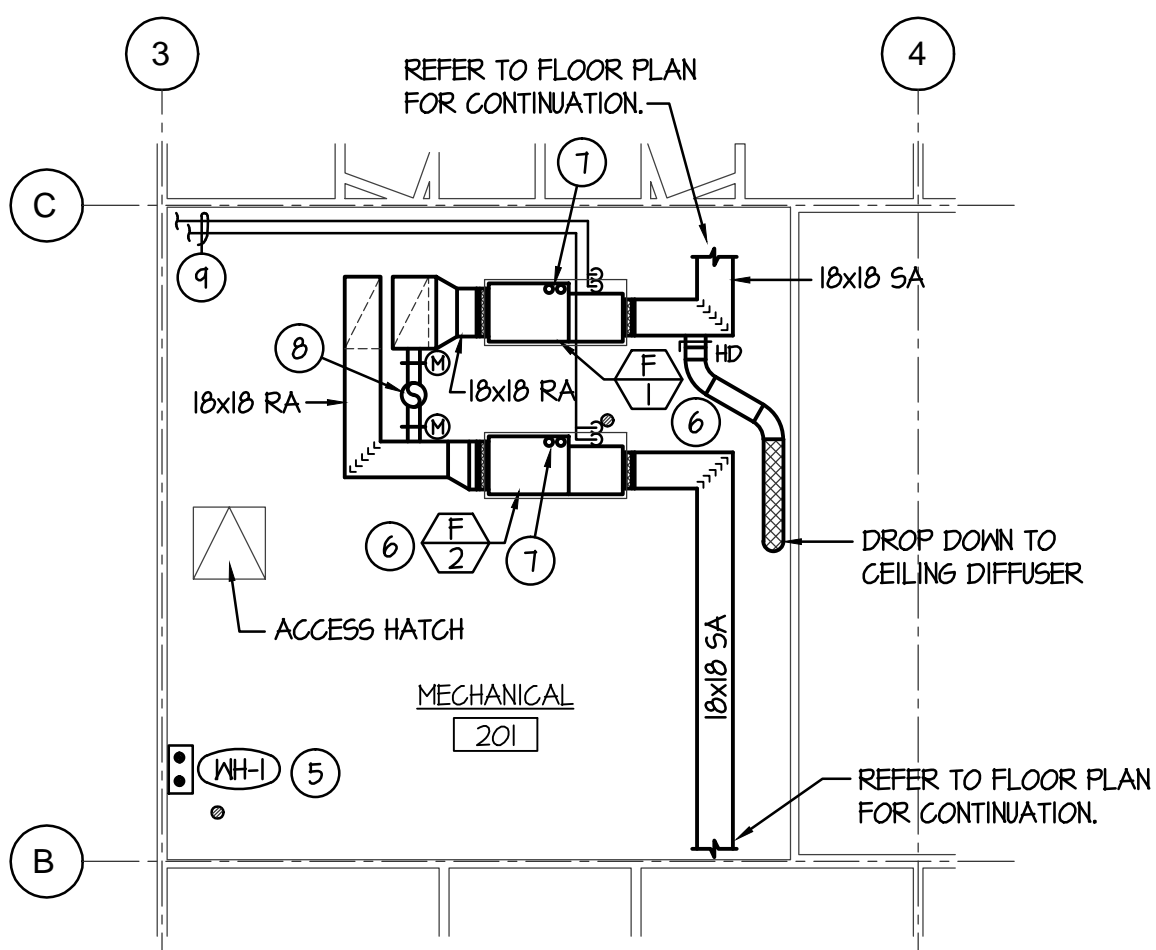
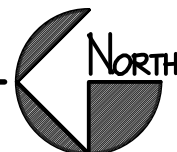


MECHANICAL FLOOR PLAN

SCALE: 1/8" = 1'-0"



MECHANICAL MEZZANINE PLAN

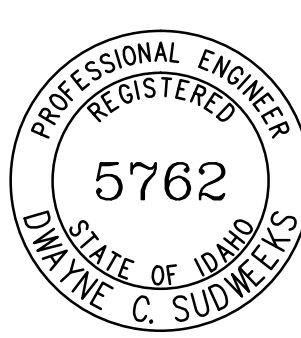
SCALE: 1/8" = 1'-0"



PLAN NOTES:

- 1 COMBINATION EXHAUST FAN / LIGHT / HEATER. INSTALL SPECIFIED UNIT IN CEILING. CONNECT 4" EXHAUST DUCT TO SOFFIT GRILLE AS SHOWN. COORDINATE WITH OTHER DUCTWORK ABOVE. REFER TO DETAIL FM-301 FOR TYPICAL INSTALLATION.
- 2 INSTALL EXHAUST FAN AS SPECIFIED IN CEILING. RUN 6" DUCT THRU JOIST SPACE. CONNECT TO SOFFIT GRILLE AS SHOWN. REFER TO DETAIL FM-301 FOR TYPICAL INSTALLATION.
- 3 RISE 4" DRYER VENT UP IN WALL TO ABOVE CEILING6. EXTEND THRU ROOF WITH ROOF CAP. NO SCREWS OR OTHER OBSTRUCTIONS ARE ALLOWED IN DRYER VENT. REFER TO DETAIL KM-301.
- 4 PROVIDE AND INSTALL PTAG HEAT PUMP UNIT COMPLETE WITH ELECTRIC HEATER COIL AS SPECIFIED. MOUNT UNIT IN WALL BELOW WINDOW. MAINTAIN 15" MINIMUM CLEARANCE IN FRONT OF UNITS. PROVIDE WALL SLEEVE AND ANODIZED ALUMINUM OUTDOOR GRILLE WITH UNITS. REFER TO DETAIL GM-301 FOR TYPICAL UNIT INSTALLATION.
- 5 TANKLESS WATER HEATER PROVIDED AND INSTALLED BY PLUMBING CONTRACTOR. RISE (2) 2" VENTS UP THRU ROOF WITH CONCENTRIC TYPE FITTING. REFER TO DETAIL LM-301 FOR TYPICAL VENT TERMINATION THRU ROOF.
- 6 PROVIDE AND INSTALL HORIZONTAL GAS FIRED FURNACES AND DX COILS AS SPECIFIED. SUPPORT UNITS FROM ROOF STRUCTURE AND MOUNT HIGH ENOUGH FOR DRAIN LINES TO GRAVITY FLOW TO CONDENSATE RECEIVER. PROVIDE SECONDARY SHEET METAL DRAIN PAN BELOW EACH UNIT AND COIL. REFER TO DETAIL EP-301 FOR TYPICAL INSTALLATION AND SUPPORTS.
- 7 RISE (2) 2" FURNACE VENTS UP THRU ROOF WITH CONCENTRIC TYPE FITTING. REFER TO DETAIL LM-301 FOR TYPICAL VENT TERMINATION THRU ROOF.
- 8 RISE 10" OUTSIDE AIR DUCT UP TO ROOF CAP. CONNECT EACH FURNACE SYSTEM TO 10" VERTICAL DUCT WITH 6" DUCT COMPLETE WITH MANUAL BALANCING DAMPER AND MOTORIZED DAMPERS. BALANCE MANUAL DAMPERS TO 120 CFM MAXIMUM. INTERLOCK MOTORIZED DAMPER WITH CORRESPONDING FURNACE. REFER TO DETAIL EM-301 FOR TYPICAL INSTALLATION OF DAMPERS. MAINTAIN 10'-0" MINIMUM DISTANCE BETWEEN ANY PLUMBING VENTS, FURNACE VENTS, OR EXHAUST OUTLETS.
- 9 RISE REFRIGERANT LINES UP WALL IN WALL CAVITY. RUN THRU ATTIC SPACE TO MEZZANINE MECHANICAL ROOM. KEEP REFRIGERANT LINES AS HIGH AS POSSIBLE IN MECHANICAL ROOM FOR ACCESS TO EQUIPMENT AND DUCTWORK. REFER TO PIPING DIAGRAM AM-302 FOR TYPICAL PIPING CONNECTIONS.
- 10 MOUNT CONDENSING UNITS ON CONCRETE PAD WITH 1" THICK NEOPRENE PADS UNDER EACH CORNER. MAINTAIN 12" MINIMUM CLEARANCE BETWEEN UNIT AND BUILDING AND 18" MINIMUM CLEARANCE BETWEEN UNITS.
- 11 REFER TO MECHANICAL MEZZANINE PLAN FOR CONTINUATION OF DUCTWORK.
- 12 MOUNT SUPPLY GRILLE AS LOW AS POSSIBLE. COORDINATE ACTUAL LOCATION WITH BUILDING STRUCTURE AND WALL TRIM.
- 13 RUN BRANCH DUCT THRU JOIST SPACE. COORDINATE DUCT LOCATION WITH LIGHT FIXTURES AND WIRING AND WITH PIPING.
- 14 COORDINATE SOFFIT GRILLE LOCATION WITH BUILDING STRUCTURE. TRANSITION 4" OR 6" EXHAUST DUCT TO 12x3 TO PASS OVER EXTERIOR WALL (BETWEEN JOISTS) AND CONNECT TO GRILLE.
- 15 PROVIDE AND INSTALL VENT AS RECOMMENDED BY MANUFACTURER. RISE 8" FIREPLACE FLUE UP THRU ROOF WITH WEATHER CAP.

ORIGINAL DRAWING SIGNED BY: DWAYNE C. SUDWEEKS  
DATE ORIGINAL SIGNED: Oct 03, 2017  
ORIGINAL ON FILE AT ENGINEERED SYSTEMS ASSOCIATES  
1355 EAST CENTER, POCA TELLO, IDAHO 83201



**Engineered Systems Associates**  
1355 EAST CENTER  
POCA TELLO, IDAHO 83201  
PHONE: (208) 233-0501  
FAX: (208) 233-0529  
EMAIL: esa@engsystems.com  
ESA JOB NUMBER: 17045

**FFKR ARCHITECTS**

730 Pacific Avenue • Salt Lake City, Utah 84104  
© 801.521.5186 • FFKR.COM

HOMESTEAD BUILDING #3 ADDITION

407 W. 1ST N.

REXBURG ID

PERMIT SET 10/03/2017

MECHANICAL FLOOR PLAN

M-101