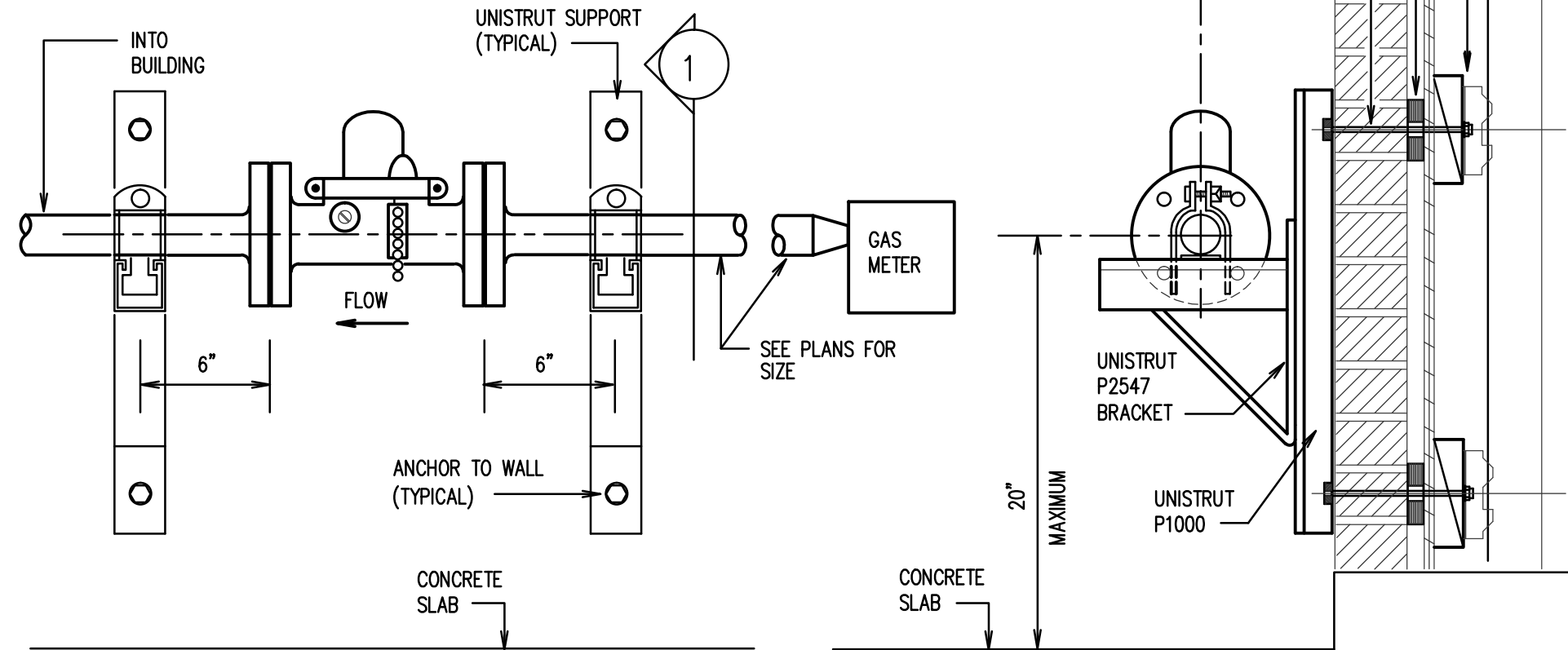


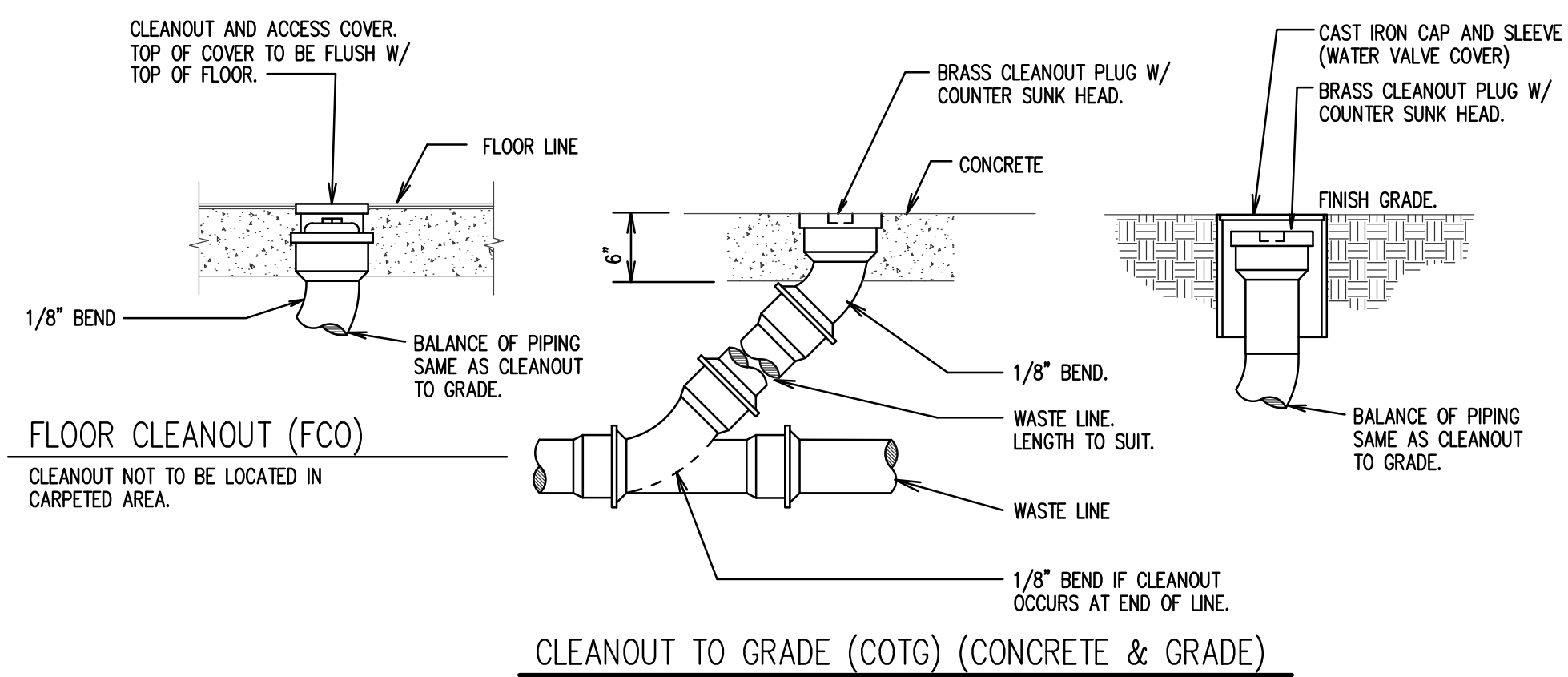
NOTES:

1. VALVE MUST BE INSTALLED WITH THE CHAIN AND RESET BUTTON FACING OUT AND ACCESSIBLE.
2. THE CHAIN IS A PLUMB LINE. MAKE SURE VALVE IS MOUNTED ABSOLUTELY LEVEL AND NO PART OF THE CHAIN IS TOUCHING THE RING.
3. VALVE MUST BE INSTALLED WITH GAS FLOW IN DIRECTION OF "ARROW" CAST INTO VALVE BODY.
4. SEISMIC VALVE TO BE LOCATED WITHIN THE FIRST SIX LINEAL FEET OF PIPE FROM METER.
5. SEISMIC VALVE MUST BE SAME SIZE AS LINE INTO BUILDING. SEISMIC VALVE MUST BE 2" MINIMUM FLANGED.

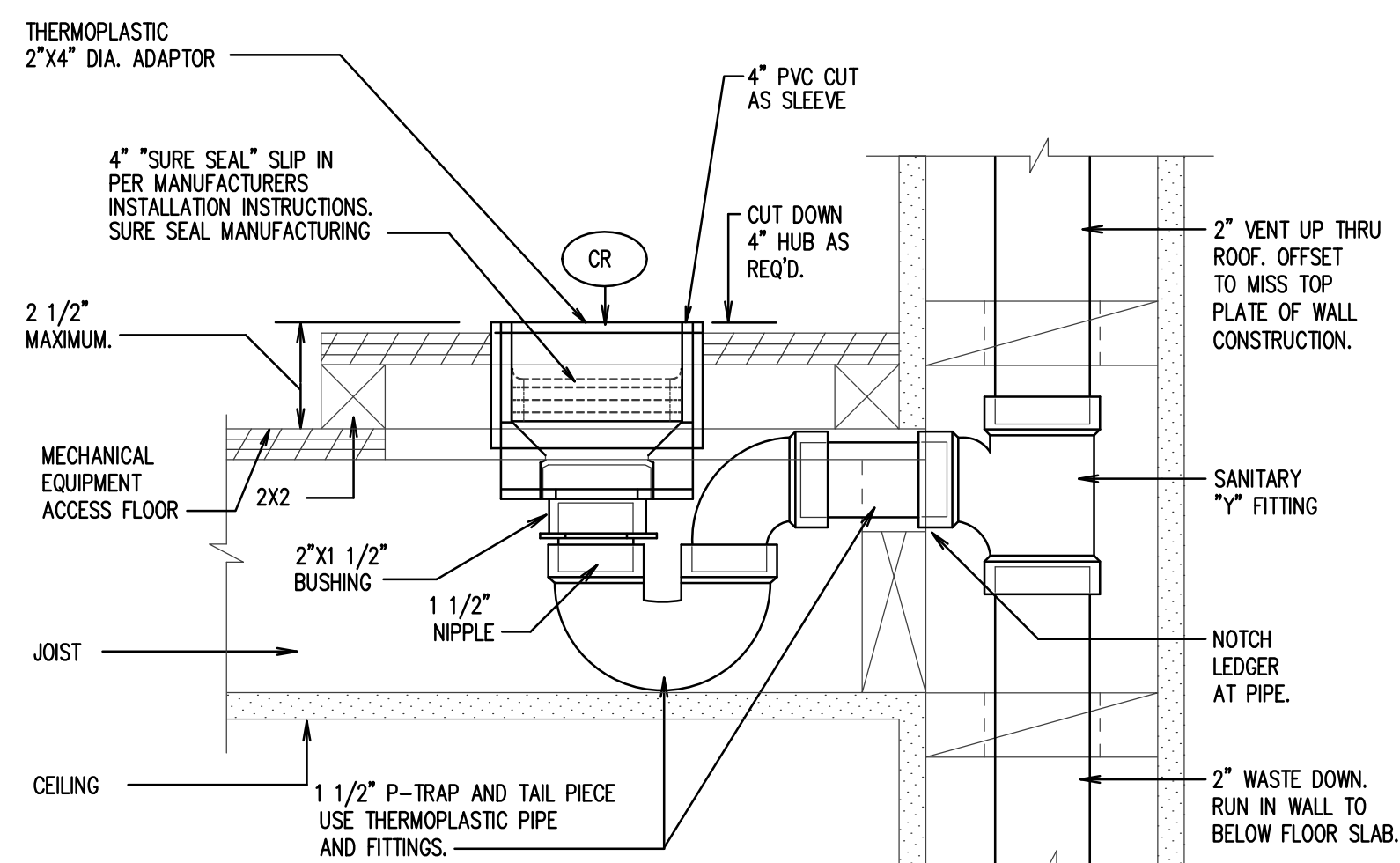


A SEISMIC VALVE DETAIL
SCALE: NONE

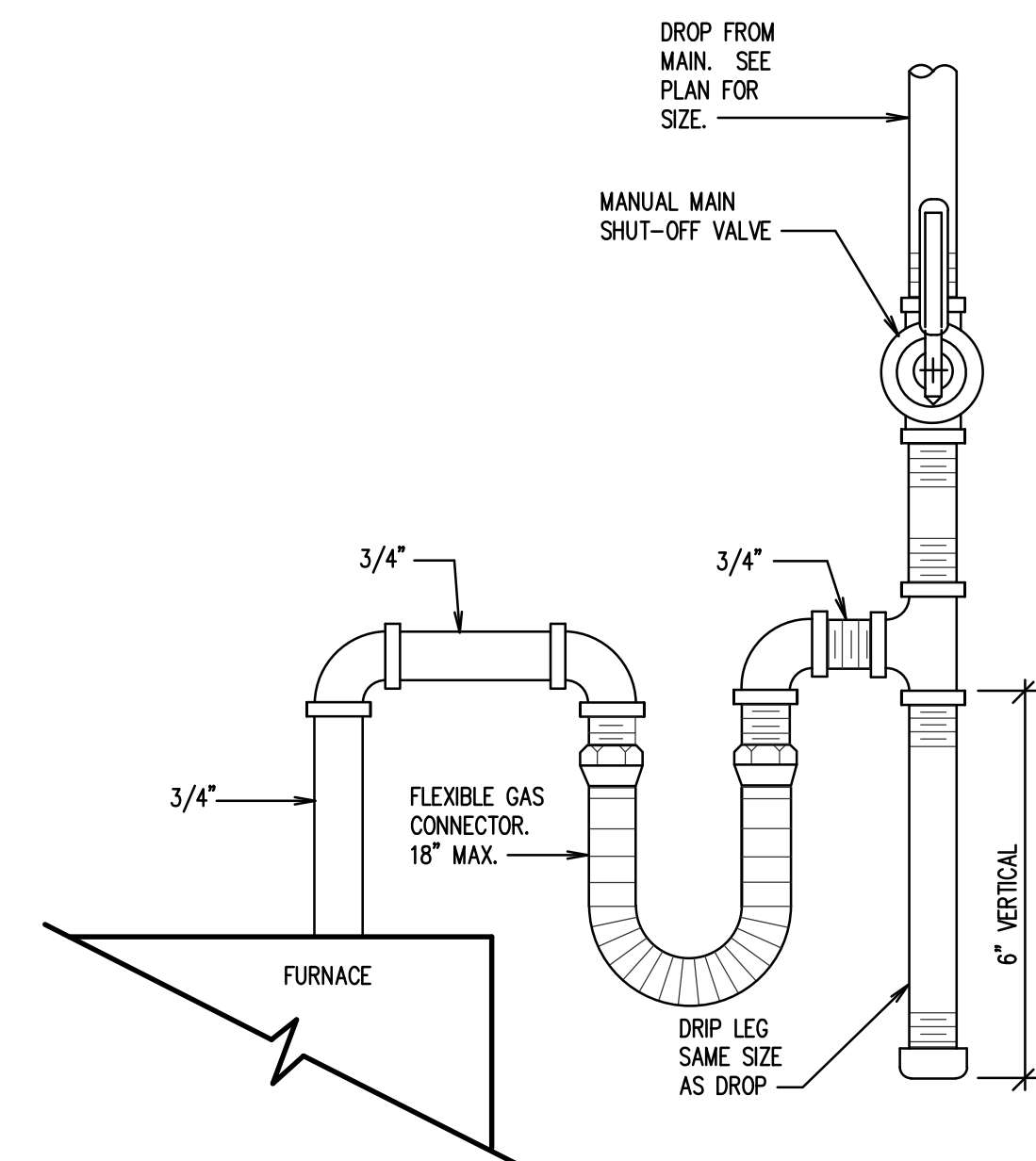
1 SECTION
SCALE: NONE



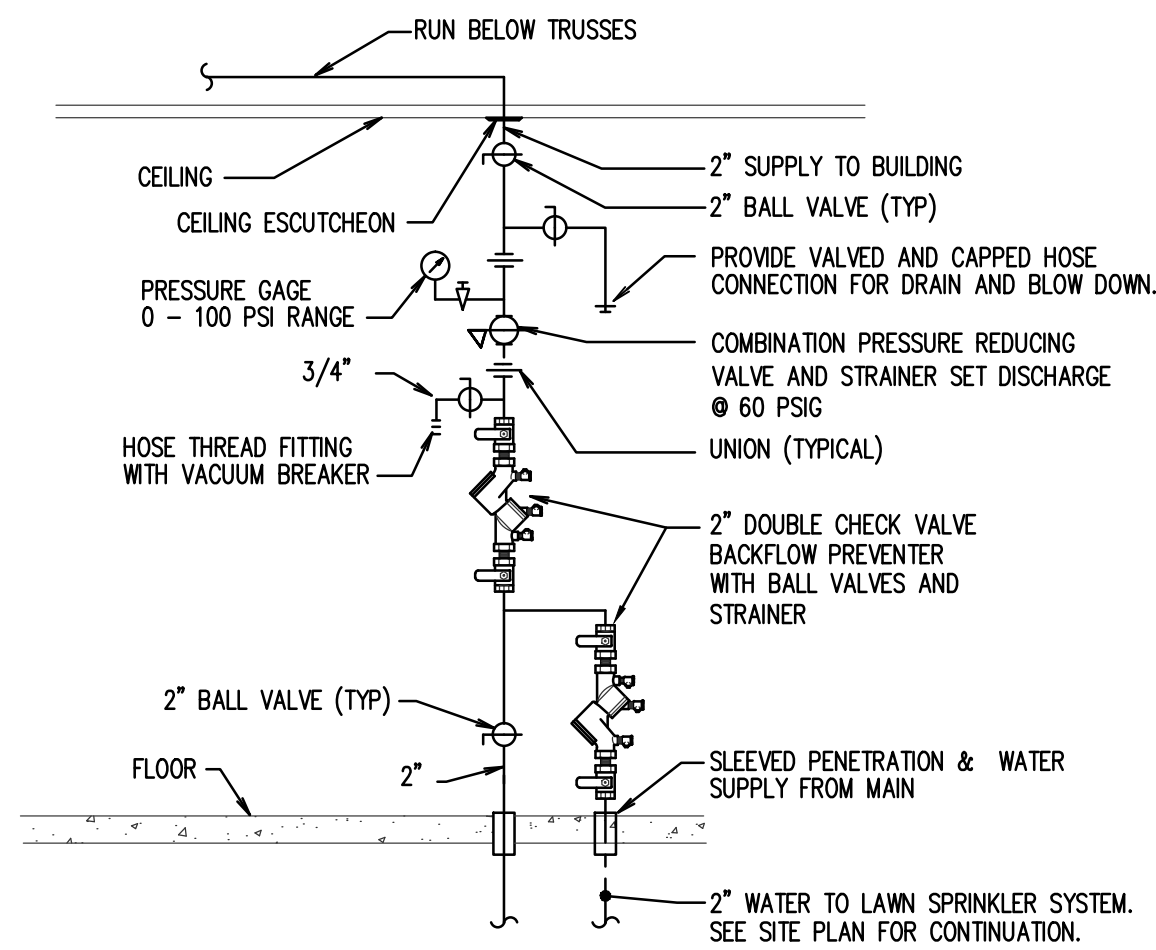
E CLEANOUT DETAILS
SCALE: NONE



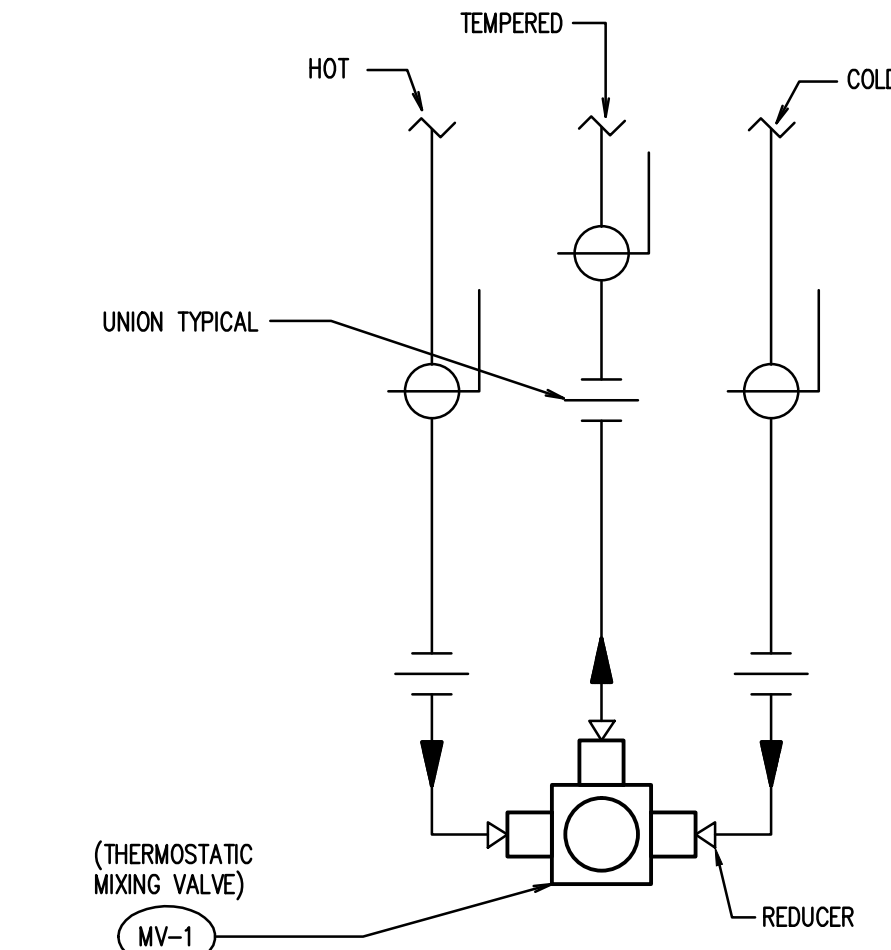
H CONDENSATE RECEIVER DETAIL
SCALE: NONE



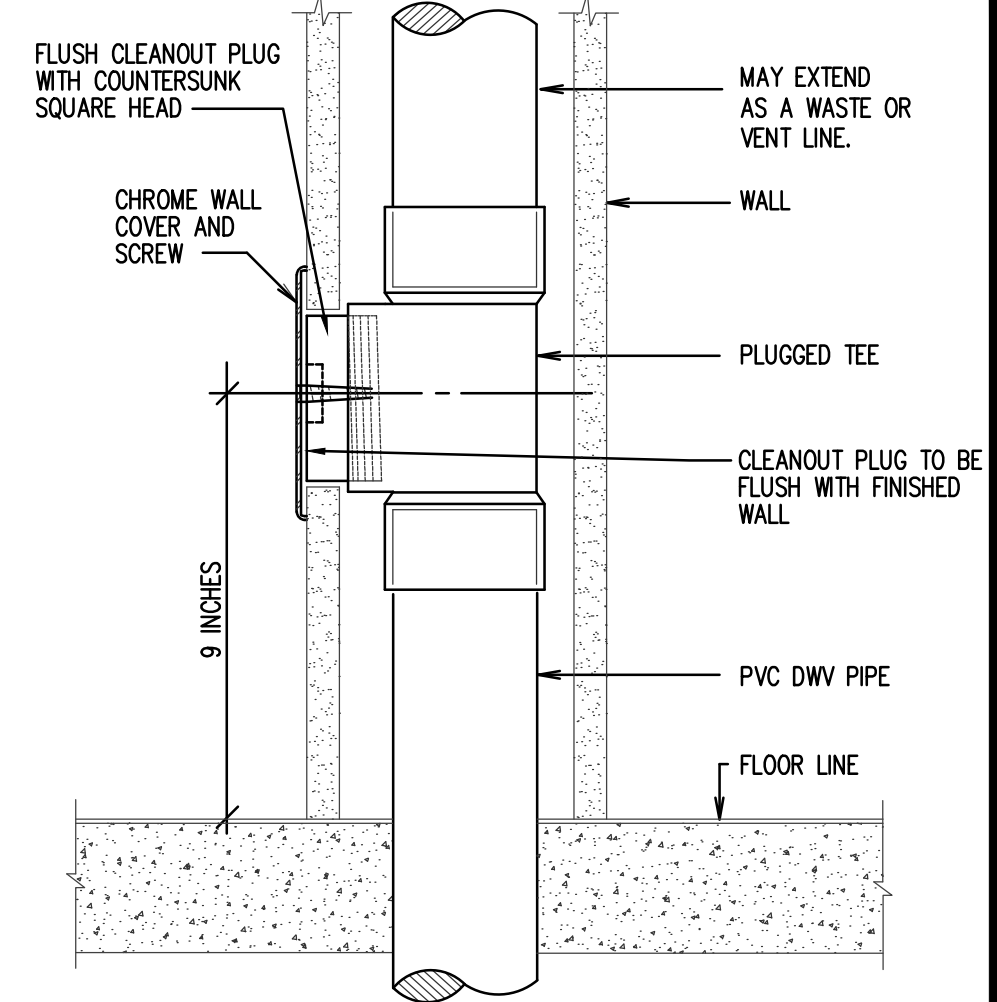
J GAS LINE CONNECTION DETAIL
SCALE: NONE



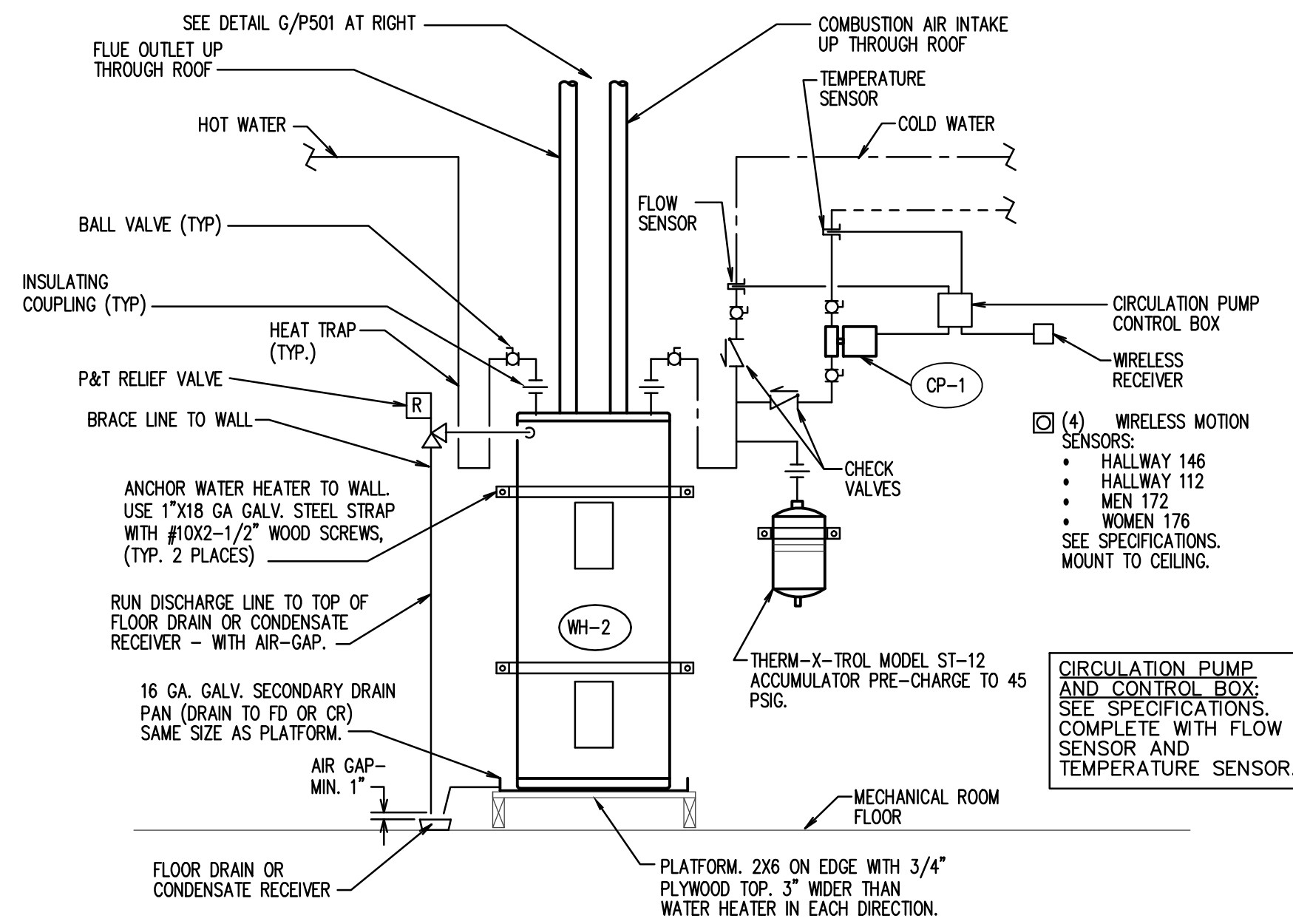
B VERTICAL WATER PRESSURE
REDUCING STATION DETAIL
SCALE: NONE



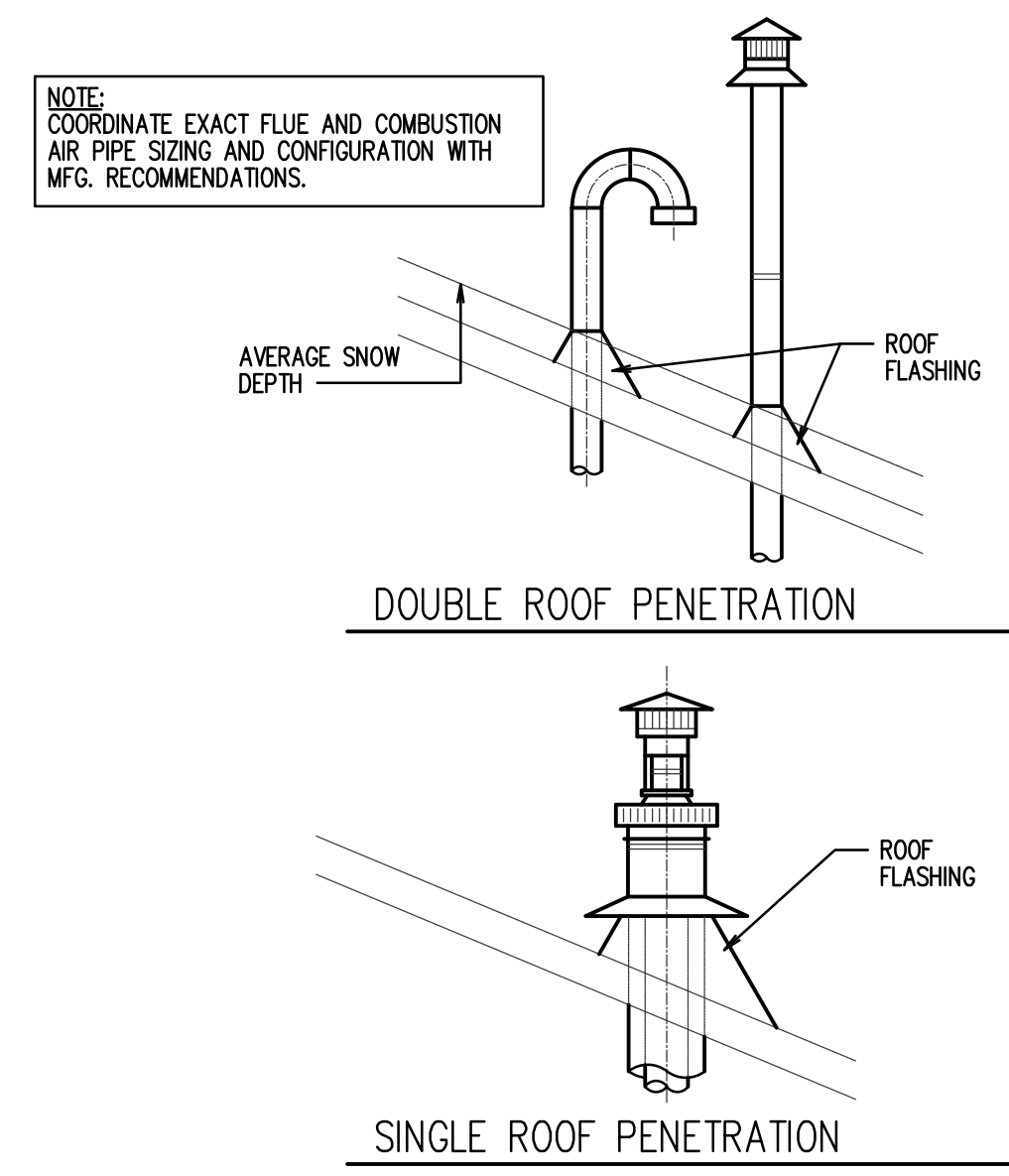
C MIXING VALVE PIPING SCHEME
SCALE: NONE



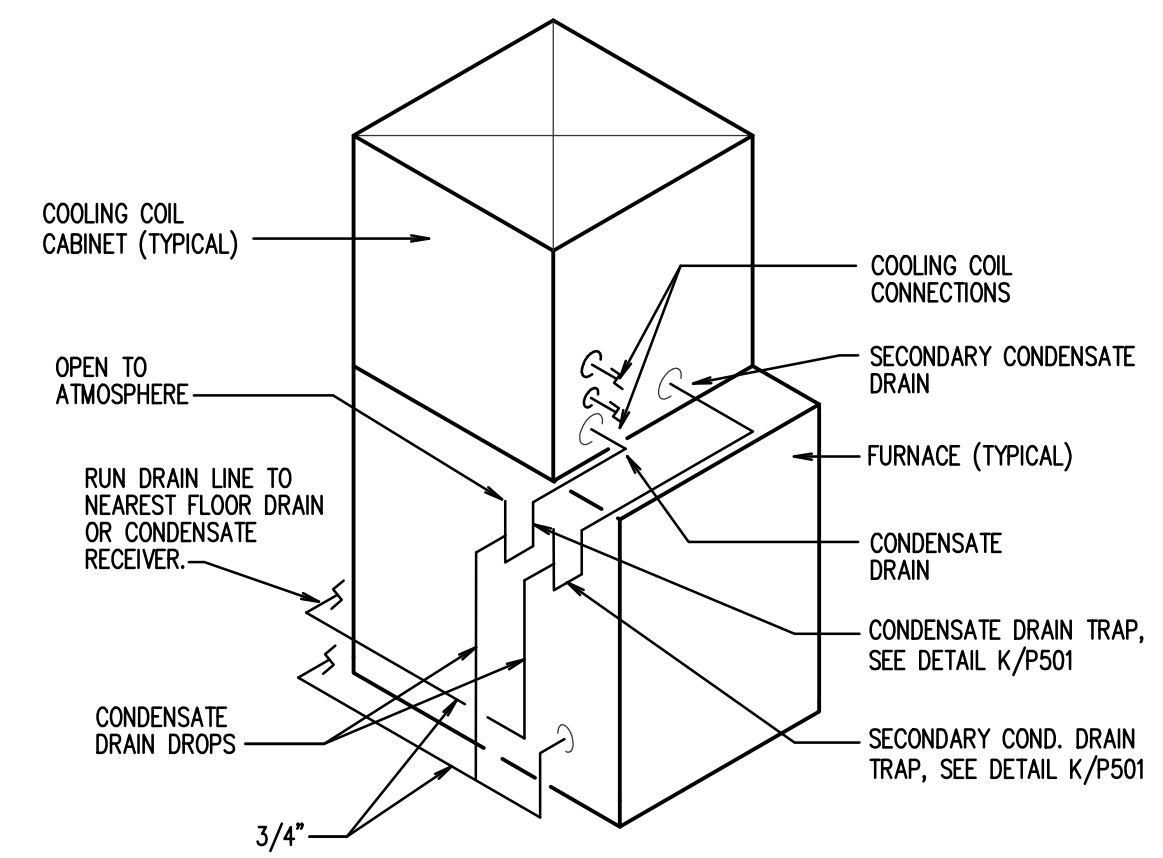
D WALL CLEANOUT DETAIL
SCALE: NONE



F TANK WATER HEATER PIPING DETAIL
SCALE: NONE



G VENTING PENETRATION DETAILS
SCALE: NONE



L VERTICAL FURNACE DETAIL
SCALE: NONE

NOTE:
DO NOT RUN CONDENSATE DRAIN IN
FRONT OF FURNACE AND FILTERS.
THIS WILL ALLOW ACCESS TO
FURNACE COMPONENTS AND
FILTERS.

ORIGINAL DRAWING SIGNED BY: DWAYNE C. SUDNEEKS
DATE ORIGINAL SIGNED: Mar 15, 2017
ORIGINAL ON FILE AT ENGINEERED SYSTEMS ASSOCIATES
1355 EAST CENTER, POCA TELLO, IDAHO 83201

Engineered Systems Associates
1355 EAST CENTER
POCA TELLO, IDAHO 83201
PHONE: (208) 233-0501
FAX: (208) 233-0529
EMAIL: esa@engsystems.com
ESA JOB NUMBER: 16083

Architect / Engineer:

nwarchitects p.a.
ARCHITECTURE / PLANNING / INTERIORS
SCOTT L. NELSON, AIA, KEVIN R. BODLEY, AIA, JAMES H. WYATT, AIA,
990 JOHN JORDAN PARKWAY P.O. BOX 2712 - IDAHO FALLS, IDAHO 83402-2712
(P) 208-322-8779 (F) 208-522-8785 (W) www.nwarchitects.com

Stamp:

New Meetinghouse for:
**Iona South Stake
Heritage 09TSC**
4440 E. High Grove Road
Idaho Falls, ID 83401

Project for:
**THE CHURCH OF
JESUS CHRIST
OF LATTER-DAY SAINTS**

Mark	Date	Description

Project Number:
16065
Plan Series:
HET-SDS-09-07
Property Number:
500-5990

Sheet Title:
**PLUMBING
DETAILS**

Sheet:

P501