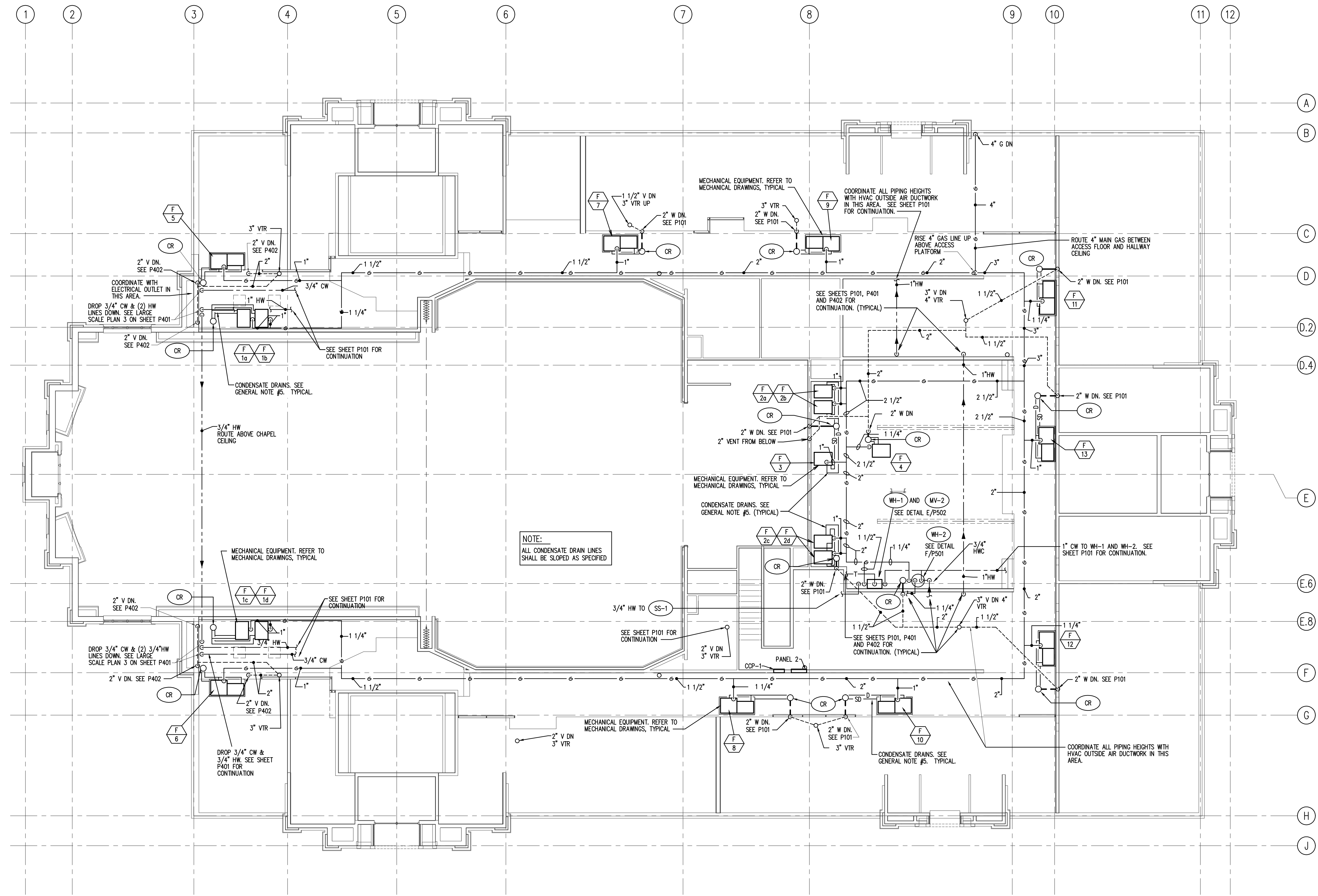


- GENERAL NOTES:**
1. LEAVE 6" CLEAR SPACE ON EQUIPMENT DECK BETWEEN FAN UNITS, DUCTWORK, ETC. AND HIGH WALL FOR GAS PIPING, CONDUIT, DRAINS, ETC. RACK ALL PIPING AND CONDUIT ON WALL WITH UNISTRUT.
 2. REFER TO MECHANICAL SHEETS FOR LOCATIONS OF MECHANICAL EQUIPMENT AND DUCTWORK. COORDINATE ALL WORK TO FIT AVAILABLE SPACE.
 3. DO NOT BLOCK ACCESS WALKWAY WITH PIPING, DUCT, CONDUIT, ETC. WHEN CROSSING WALKWAY RUN HIGH OVERHEAD. NO PIPING, DUCTWORK, CONDUIT, ETC. SHALL BE RUN LOWER THAN DUCTWORK SHOWN IN SECTIONS ON SHEETS M301 AND M302.
 4. DUE TO THE CLOSE PROXIMITY OF THE WATER, VENT, DRAIN PIPING, AND DUCTWORK, THE PLUMBING CONTRACTOR SHALL COORDINATE THE INSTALLATION OF ALL PLUMBING WITH THE MECHANICAL AND SHEET METAL CONTRACTORS.
 5. TYPICAL FOR ALL FAN UNITS AND COOLING COILS. DO NOT OBSTRUCT WALKWAY. SHOWN HERE FOR CLARITY ONLY. REFER TO DETAIL D/M502. COMBINE PRIMARY DRAINS OF EACH FAN UNIT AND COOLING COIL TO A 1" PIPE. SIZE. SEE DETAIL B/P502 FOR PIPE SUPPORT.



② EQUIPMENT PLATFORM PLUMBING PLAN
1/8" = 1'-0"

ORIGINAL DRAWING SIGNED BY: DWAYNE C. SUDNECKS
DATE ORIGINAL SIGNED: Mar 15, 2017
ORIGINAL ON FILE AT ENGINEERED SYSTEMS ASSOCIATES
1355 EAST CENTER, POCA TELLO, IDAHO 83201

Engineered Systems Associates
1355 EAST CENTER
POCA TELLO, IDAHO 83201
PHONE: (208) 233-0501
FAX: (208) 233-0529
EMAIL: esa@engsystems.com
ESA JOB NUMBER: 16083

PROFESSIONAL ENGINEER
REGISTERED
5762
STATE OF IDAHO
DWAYNE C. SUDNECKS