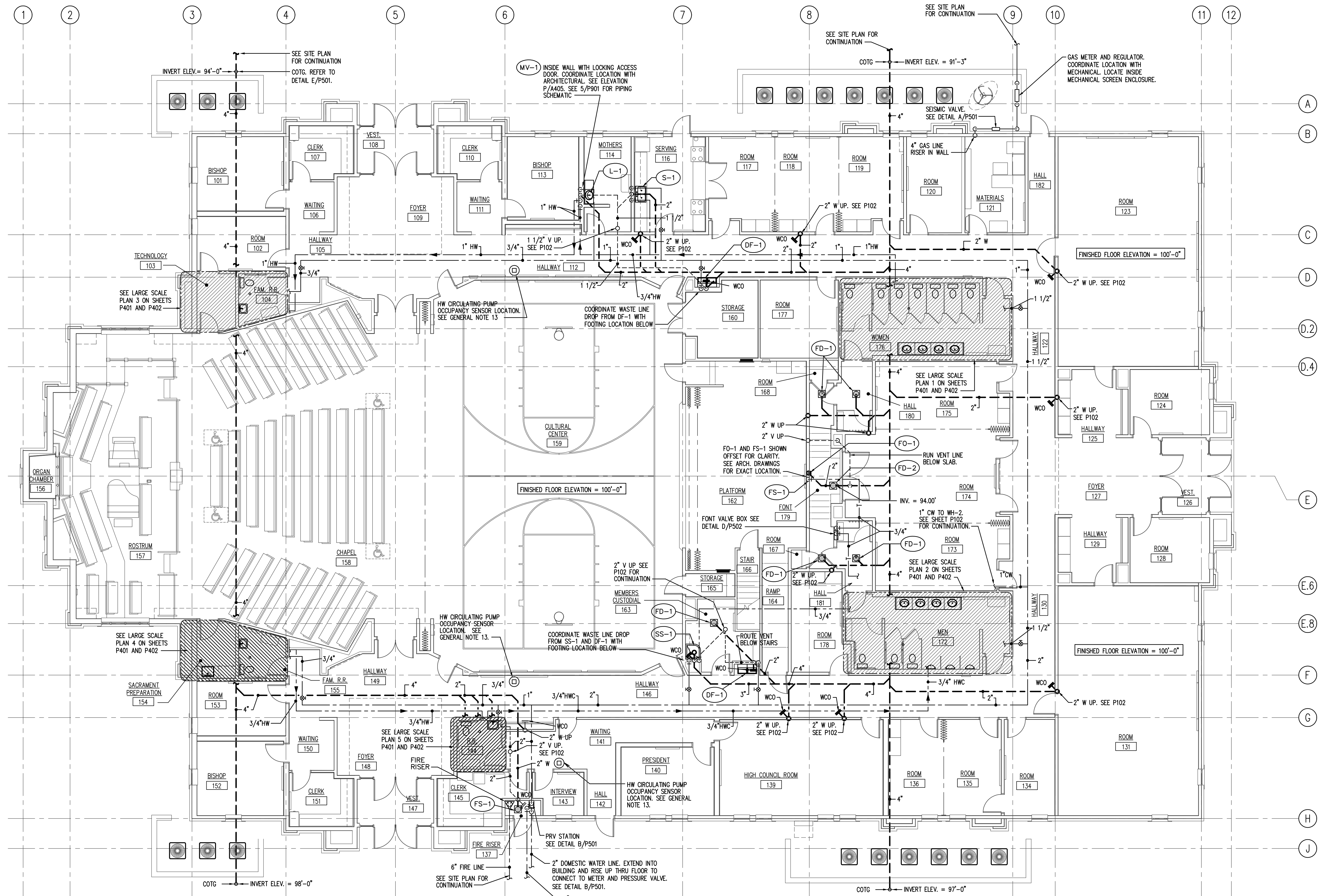


GENERAL NOTES:

1. ALL PLUMBING SHALL COMPLY WITH THE MOST STRINGENT OF APPLICABLE CODES, ORDINANCES, OR THE SPECIFICATIONS.
2. ALL FIXTURES SHALL BE PROPERLY VENTED TO THE ATMOSPHERE.
3. REFER TO MECHANICAL SHEETS FOR LOCATIONS OF MECHANICAL EQUIPMENT AND DUCTWORK AND CORRELATE ALL WORK TO FIT AVAILABLE SPACE.
4. GAS LINE TO BE RUN IN MECHANICAL EQUIPMENT ACCESS AREA UNLESS OTHERWISE NOTED OR SHOWN.
5. WATER PIPING AND VENT PIPING SHALL BE RUN IN MECHANICAL EQUIPMENT ACCESS AREA UNLESS OTHERWISE NOTED OR SHOWN.
6. FOR INDIVIDUAL LINE SIZES TO FIXTURES SEE PLUMBING FIXTURE SCHEDULE SHEET P601.
7. DO NOT RUN PLUMBING IN SHEAR WALLS UNLESS NOTED OTHERWISE.
8. MINIMUM WATER PIPING UNDER CONCRETE SLAB SHALL BE 3/4".
9. DUE TO THE CLOSE PROXIMITY OF THE WATER, VENT AND DRAIN PIPING AS WELL AS DUCTWORK, EQUIPMENT, AND HVAC PIPING, THE PLUMBING CONTRACTOR SHALL COORDINATE THE INSTALLATION WITH THE MECHANICAL AND SHEET METAL CONTRACTORS.
10. FOR PIPE SIZES NOT SHOWN ON THIS SHEET, SEE LARGE SCALE PLANS P401 AND P402; AND PIPING SCHEMATICS SHEETS P901, P902 AND SCHEDULES ON SHEET P601.
11. REFER TO MECHANICAL SHEETS FOR ANY ADDITION WORK.
12. COORDINATE LOCATION OF EACH DOMESTIC WATER ISOLATION VALVE WITH MECHANICAL AND SHEET METAL INSTALLATION TO PROVIDE REQUIRED ACCESS AND VISIBILITY TO VALVE.
13. COORDINATE EXACT LOCATION OF HW CIRCULATING PUMP OCCUPANCY SENSORS WITH ARCHITECT. LOCATE ON CEILING AWAY FROM LIGHTS, DIFFUSERS, AND FIRE SPRINKLER HEADS.



1 MAIN LEVEL PLUMBING PLAN
1/8" = 1'-0"

LEGEND					
MEANING	SYMBOL OR ABBREVIATION	MEANING	SYMBOL OR ABBREVIATION	MEANING	SYMBOL OR ABBREVIATION
HOT WATER LINE	— — — — —	VENT LINE	— — — — —	BALL VALVE	⊗
HOT WATER CIRCULATING LINE	— — — — —	CONDENSATE DRAIN	— D — — —	WALL CLEANOUT	WCO
TEMPERED HOT WATER LINE	— T — — —	SECONDARY CONDENSATE DRAIN	— SD — — —	CLEANOUT TO GRADE	COTG
COLD WATER LINE	— — — — —	GAS LINE	— G — — —	VENT THRU ROOF	VTR
WASTE LINE	— — — — —	UNION	— U — — —	CIRCULATING PUMP OCCUPANCY SENSOR	⊕

ORIGINAL DRAWING SIGNED BY: DWAYNE C. SUDWEEKS
DATE ORIGINAL SIGNED: Mar 15, 2017
ORIGINAL ON FILE AT ENGINEERED SYSTEMS ASSOCIATES
1355 EAST CENTER, POCA TELLO, IDAHO 83201

Engineered Systems Associates
1355 EAST CENTER
POCA TELLO, IDAHO 83201
PHONE: (208) 233-0501
FAX: (208) 233-0529
EMAIL: esa@engsystems.com
ESA JOB NUMBER: 16083