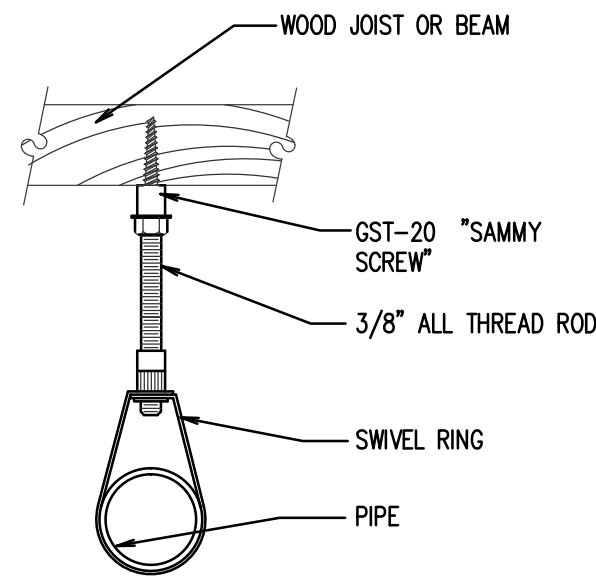
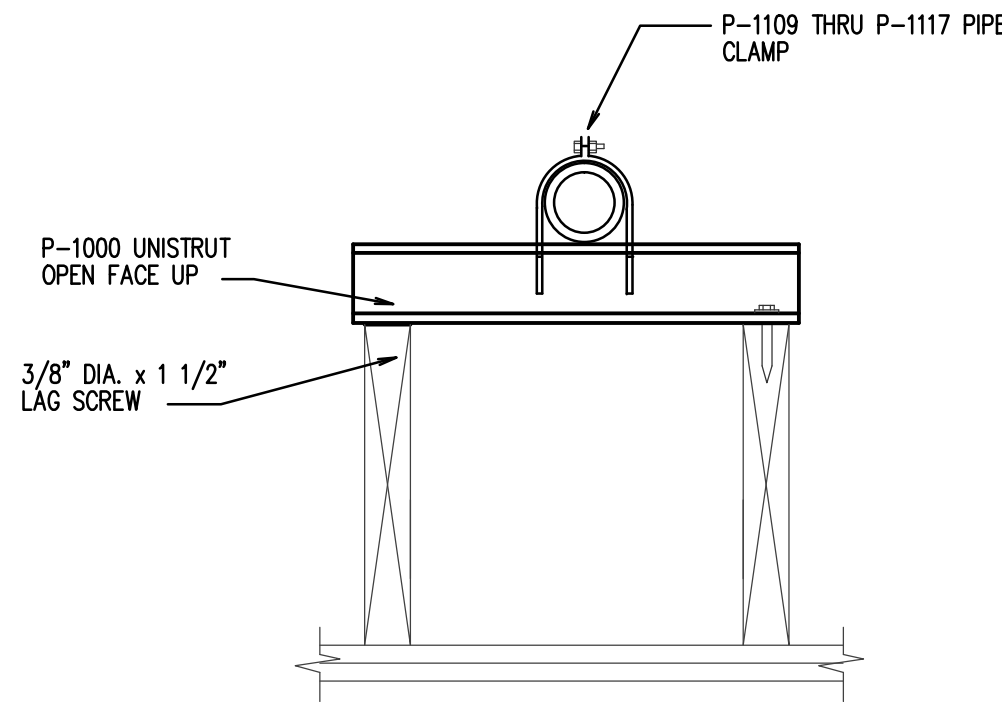


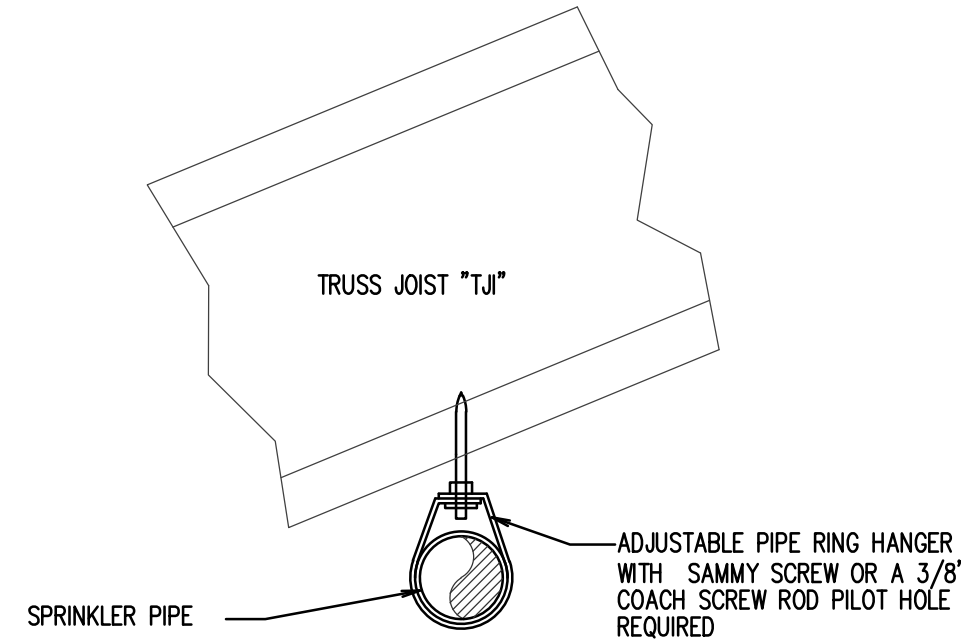
D HANGER DETAIL
NO SCALE



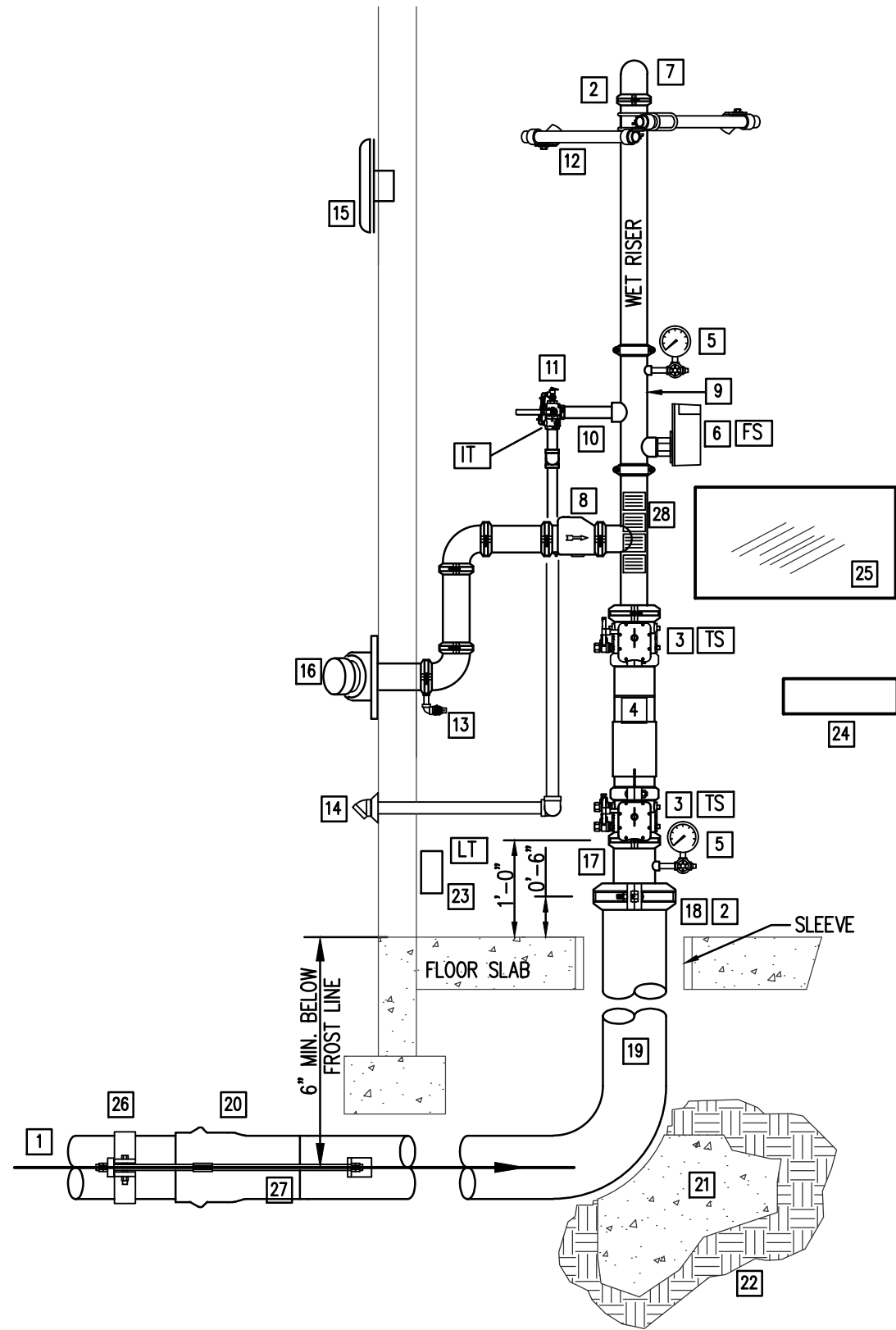
E HANGER DETAIL
NO SCALE



F HANGER DETAIL
NO SCALE



G HANGER DETAIL
NO SCALE



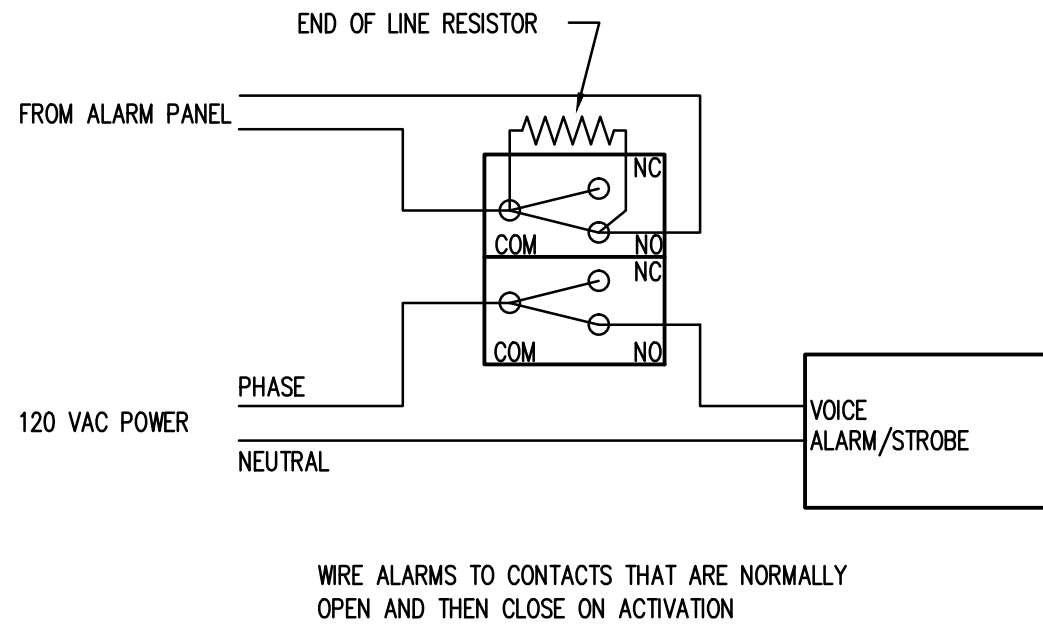
L RISER SCHEMATIC
NO SCALE

WET RISER DETAIL KEYED NOTES:

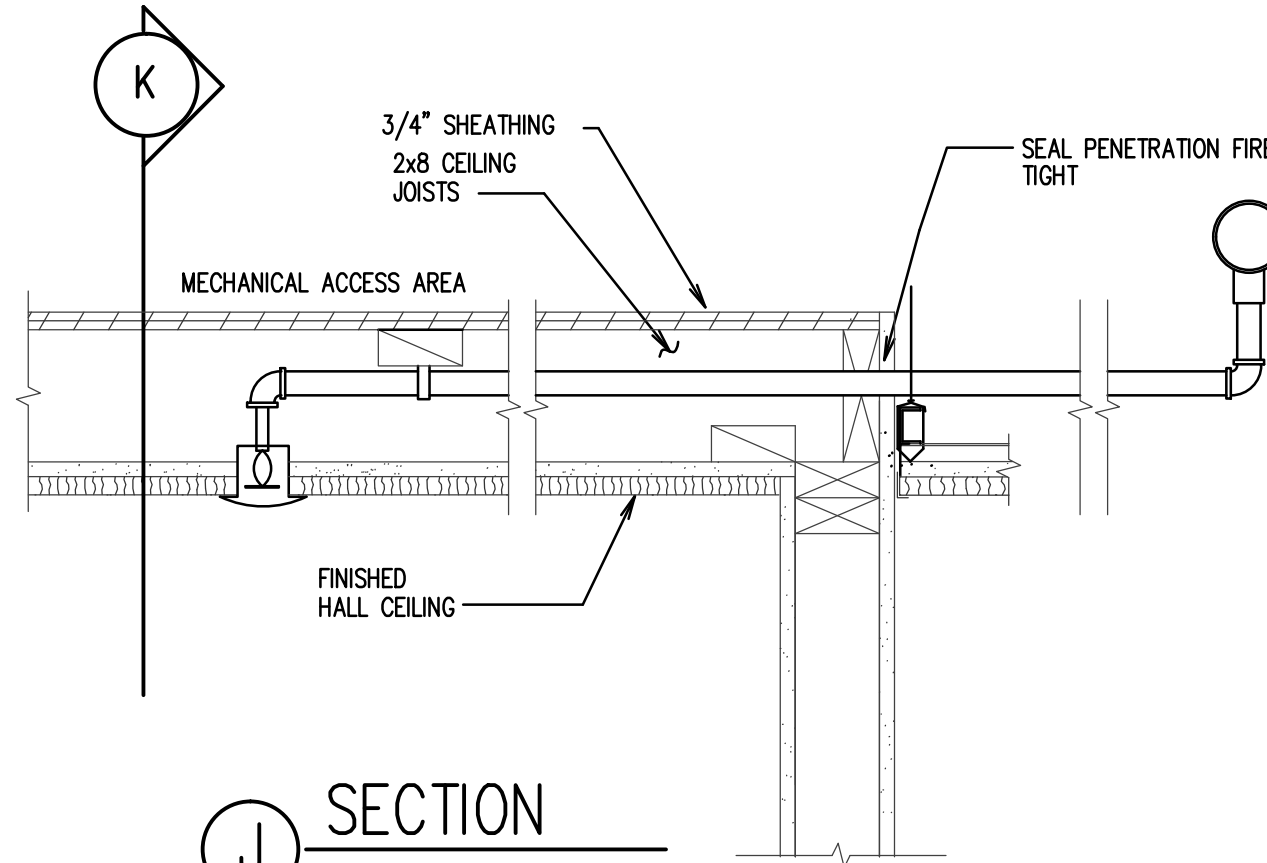
1. WATER SUPPLY FROM CITY WATER MAIN. SEE SITE UTILITY PLAN FOR CONTINUATION.
2. FLEXIBLE GROOVED PIPE COUPLING WHEN SEISMIC BRACING IS REQUIRED. SEE NOTE #12.
3. GROOVED BUTTERFLY VALVE WITH INTEGRAL SUPERVISORY SWITCH.
4. DOUBLE CHECK BACKFLOW PREVENTER WITH RELATED TRIM AND GAUGES.
5. 3/4" DIAMETER WATER GAUGE WITH 1/2" TEST AND ISOLATION VALVE.
6. VANE TYPE WATER FLOW SWITCH.
7. SUPPLY TO WET PIPE FIRE SPRINKLER SYSTEM.
8. SWING CHECK VALVE.
9. RISER MANIFOLD - INCLUDES PRESURE GAUGE, FLOW SWITCH, PRESSURE RELIEF VALVE, AND TEST AND MAIN DRAIN DEVICE.
10. INSPECTOR'S TEST & DRAIN VALVE - PIPE TO OUTSIDE.
11. PRESSURE RELIEF VALVE - REQUIRED - SET AT 175 PSI.
12. SEISMIC BRACING REQUIRED IN SEISMIC DESIGN CATEGORY C, D, E, F. SEE DESIGN CRITERIA SCHEDULE ON SHEET S601.
13. 1/2" AUTOMATIC BALL DRIP VALVE.
14. DRAIN PIPING TO OUTSIDE WITH GALVANIZED PIPE, 45 ELL, AND 1-PCE GALV. COLLAR.
15. WEATHERPROOF VOICE ALARM/STROBE (OUTSIDE).
16. OUT TO FIRE DEPARTMENT CONNECTION WITH GALVANIZED SCH 40 PIPING - PROVIDE BALL DRIP WHEN TRAPPING PIPE. SIZE CONNECTION AS REQUIRED.
- 16.1. NOTE: PIPE FDC TO REMOTE LOCATION WHEN REQUIRED BY FIRE MARSHAL.
17. GALVANIZED SPOOL PIECE WITH PRESSURE GAUGE.
18. REDUCING GROOVED COUPLING OR CONCENTRIC GROOVED REDUCER.
19. AMES STAINLESS STEEL "IN-BUILDING-RISER" NO SUBSTITUTIONS. MINIMUM 6 INCH.
20. TYTON JOINT PIPE CONNECTION WITH GASKET.
21. CONCRETE THRUST BLOCK WITH 8 SQ. FEET HORIZONTAL BEARING AREA (MIN).
22. UNDISTURBED EARTH.
23. LOW TEMPERATURE SENSOR - MOUNTED ON WALL - THIS SENSOR IS PROVIDED UNDER DIVISION 28 OF THE SPECIFICATIONS.
24. SPARE HEAD CABINET WITH SPARE SPRINKLER HEADS AND WRENCHES.
25. LAMINATED SYSTEM MAP WITH SYSTEM START-UP AND SHUT-DOWN INSTRUCTIONS.
26. GALVANIZED STEEL PIPE RETAINER CLAMP.
27. GALVANIZED STEEL RODS, SIZE PER NFPA 24, TO INCLUDE WASHERS, ROD COUPLINGS, AND ALL-THREAD RODS WITH DOUBLE HEX NUTS.
28. HYDRAULIC CALCULATION PLACARDS.

GENERAL NOTES:

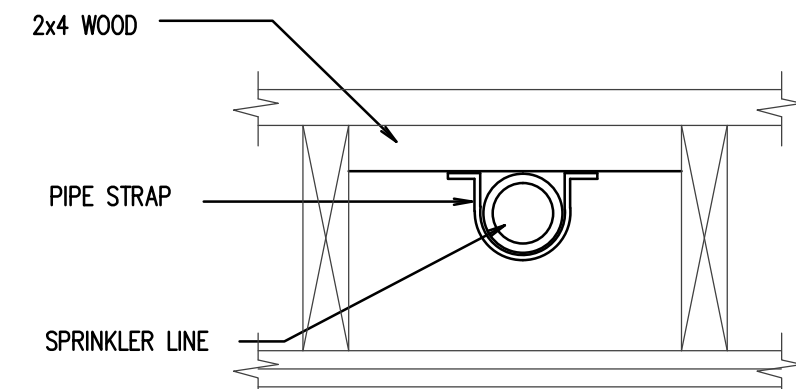
1. PROVIDE SLEEVES WHERE PIPING PENETRATES BUILDING AT FLOOR AND WALLS. SEAL AROUND PENETRATION WITH FLEXIBLE MASTIC AT FLOOR. PROVIDE 2" ANNULAR SPACE AROUND PIPE.
2. ALL BURIED STEEL COMPONENTS SHALL BE PROTECTED FROM CORROSION BY THE TAR AND WRAPPED METHOD. GALVANIZED COMPONENTS ARE NOT EXEMPT FROM THIS REQUIREMENT.



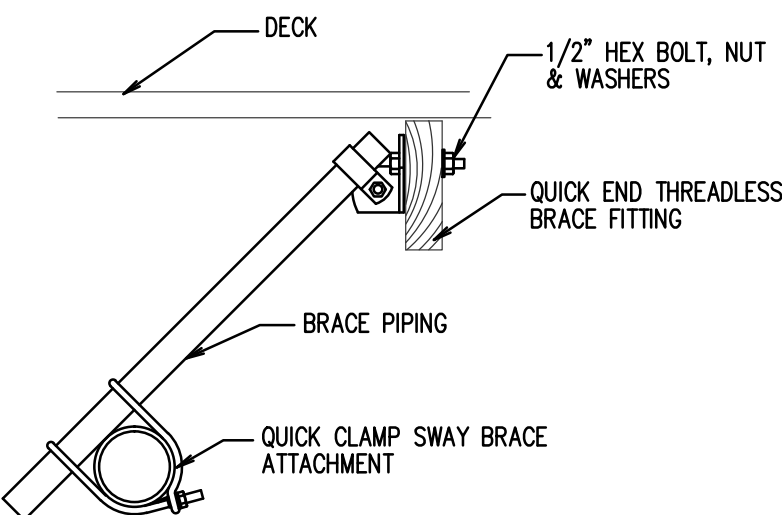
H WIRING SCHEMATIC
NO SCALE



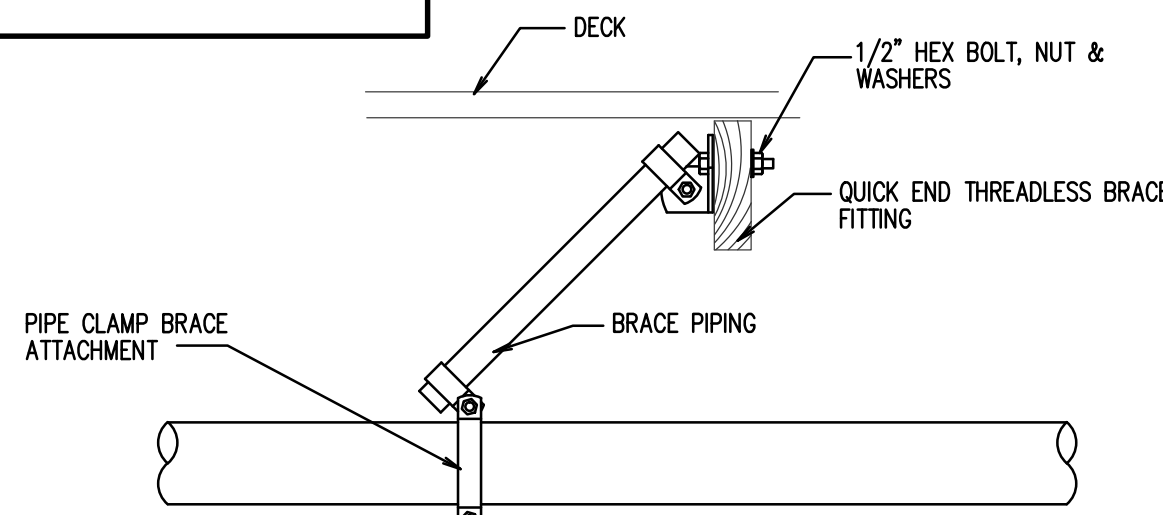
J SECTION
NO SCALE



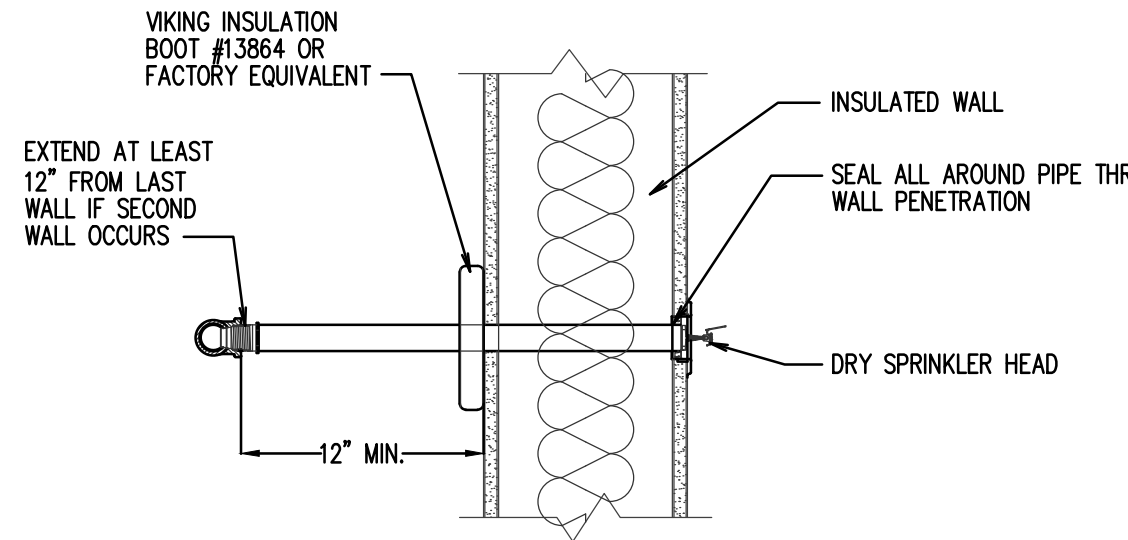
K SECTION
NO SCALE



M LATERAL SEISMIC BRACE
NO SCALE



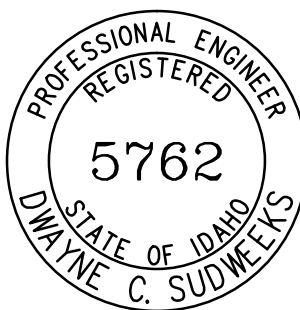
N LONGITUDINAL SEISMIC BRACE
NO SCALE



P DRY HEAD DETAIL
NO SCALE

- NOTES:
1. SEE FS101 FOR GENERAL NOTES.
 2. SEE FS201 FOR EQUIPMENT LEGEND AND HYDRAULIC INFORMATION PLACARDS.

ORIGINAL DRAWING SIGNED BY: DWAYNE C. SUDNEEKS
DATE ORIGINAL SIGNED: Mar 15, 2017
ORIGINAL ON FILE AT ENGINEERED SYSTEMS ASSOCIATES
1355 EAST CENTER, POCAATELLO, IDAHO 83201



Engineered Systems Associates
1355 EAST CENTER
POCAATELLO, IDAHO 83201
PHONE: (208) 233-0501
FAX: (208) 233-0529
EMAIL: esa@engsystems.com
ESA JOB NUMBER: 16083

Architect / Engineer:
nbwarchitects p.a.
ARCHITECTURE / PLANNING / INTERIORS
SCOTT L. NELSON, AIA, KEVIN R. BODDY, AIA, JAMES H. WYATT, AIA,
990 JOHN JORDAN PARKWAY, P.O. BOX 2712 - IDAHO FALLS, IDAHO 83402-2712
(P) 208-322-8779 (F) 208-522-8785 (W) www.nbwarchitects.com

Stamp:

New Meetinghouse for:
**Iona South Stake
Heritage 09TSC**
4440 E. High Grove Road
Idaho Falls, ID 83401

Project for:
**THE CHURCH OF
JESUS CHRIST
OF LATTER-DAY SAINTS**

Mark	Date	Description

Project Number:
16065
Plan Series:
HET-SDS-09-07
Property Number:
500-5990

Sheet Title:
**FIRE SPRINKLER
RISER AND
DETAILS**

Sheet:

FS501