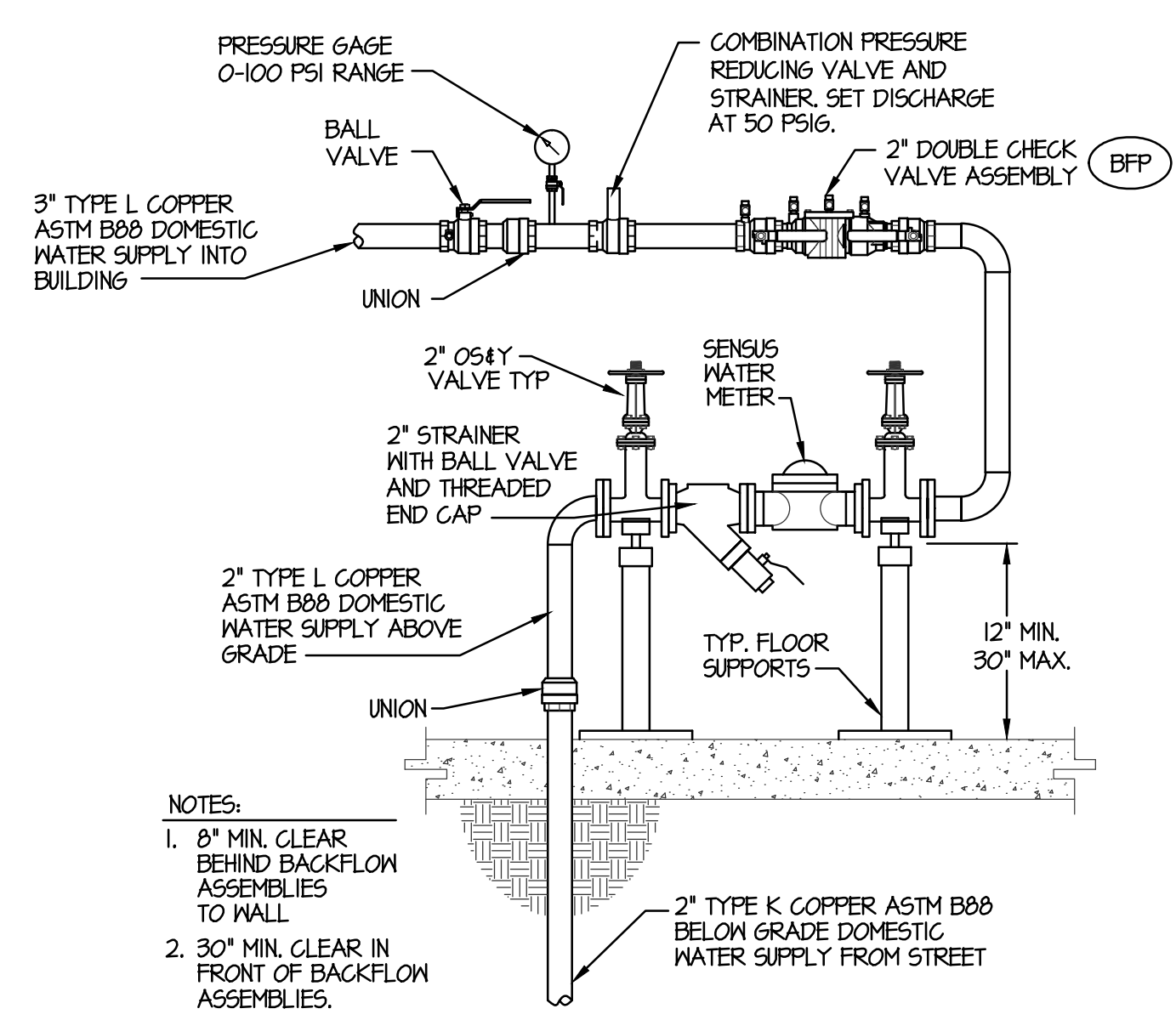
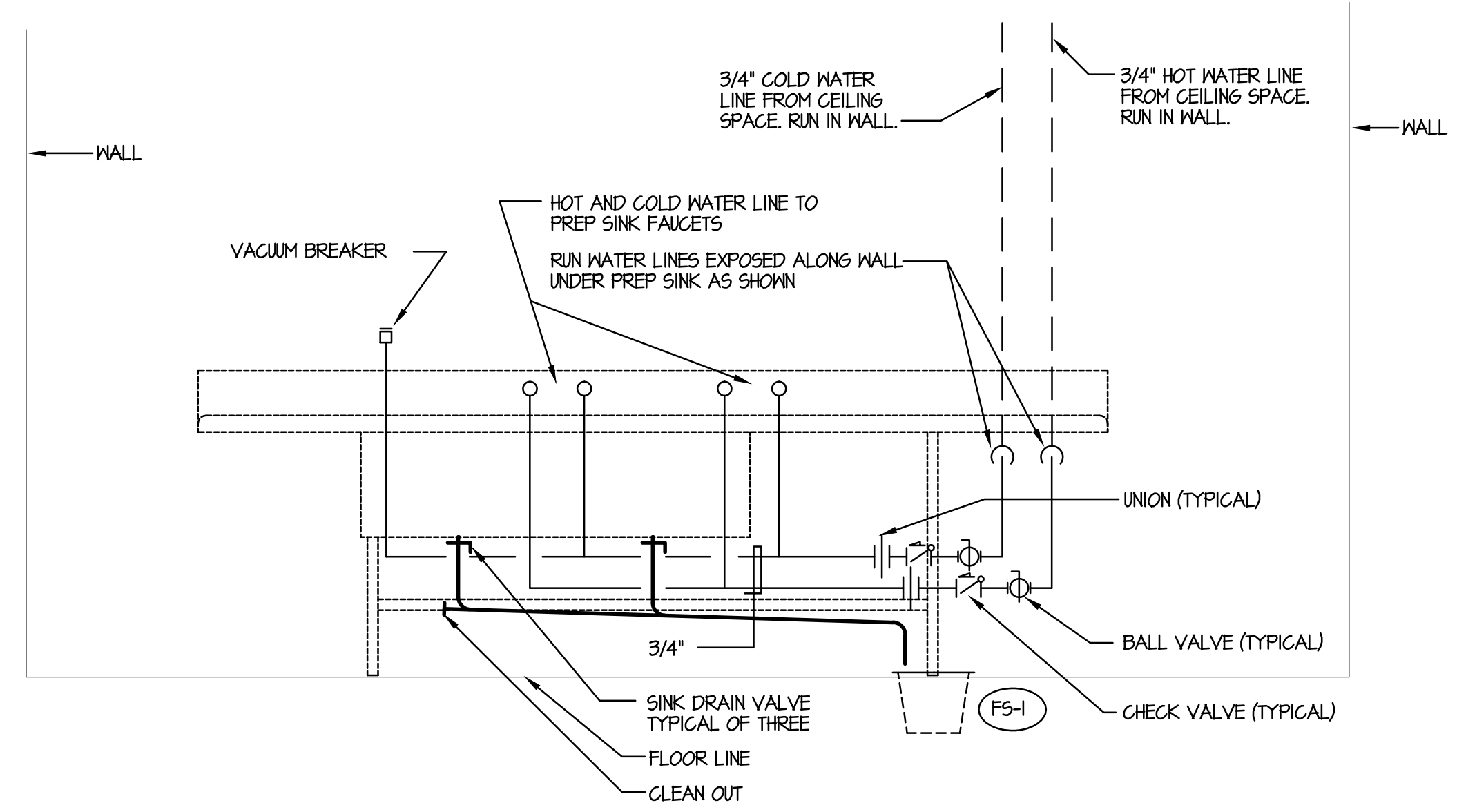


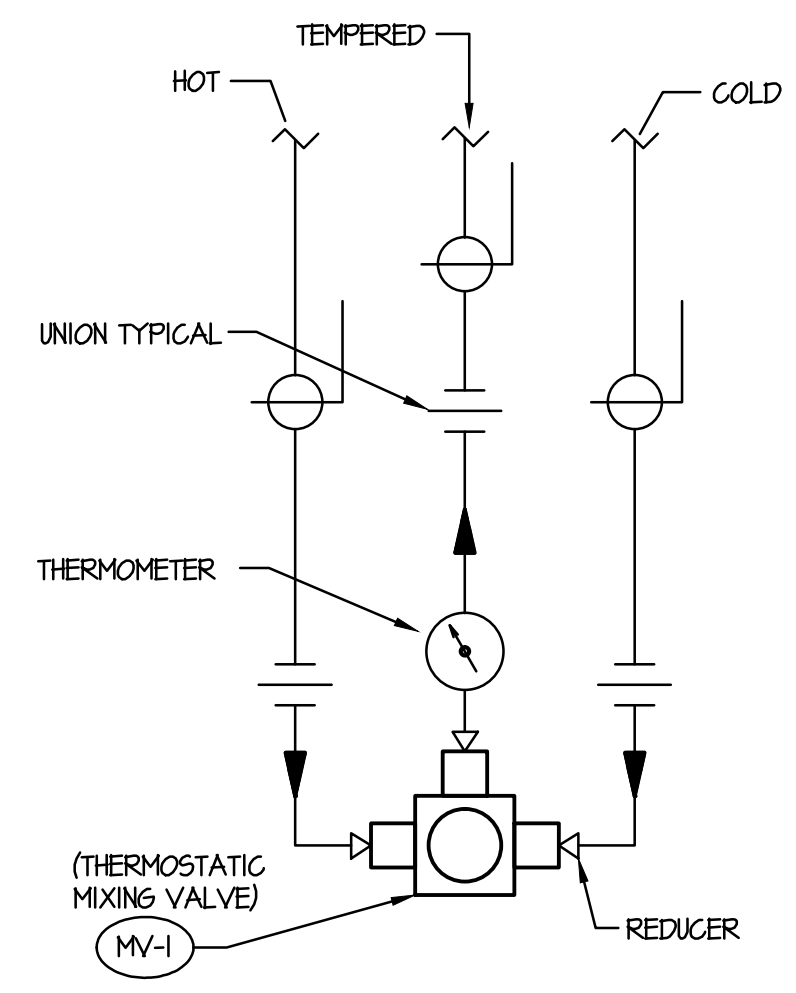
A WATER HEATER DETAIL
 NO SCALE



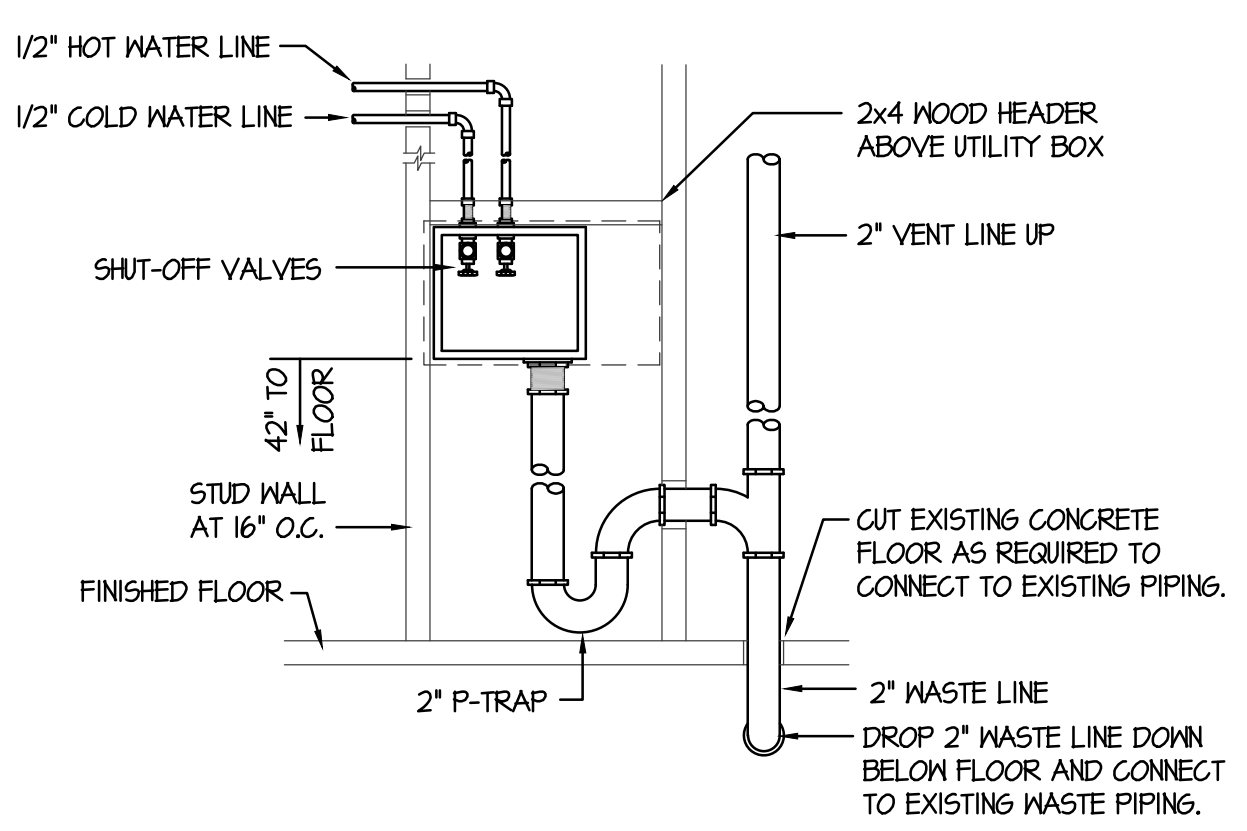
B METER/BACKFLOW PREVENTER DETAIL FOR DOMESTIC WATER SUPPLY
 NO SCALE



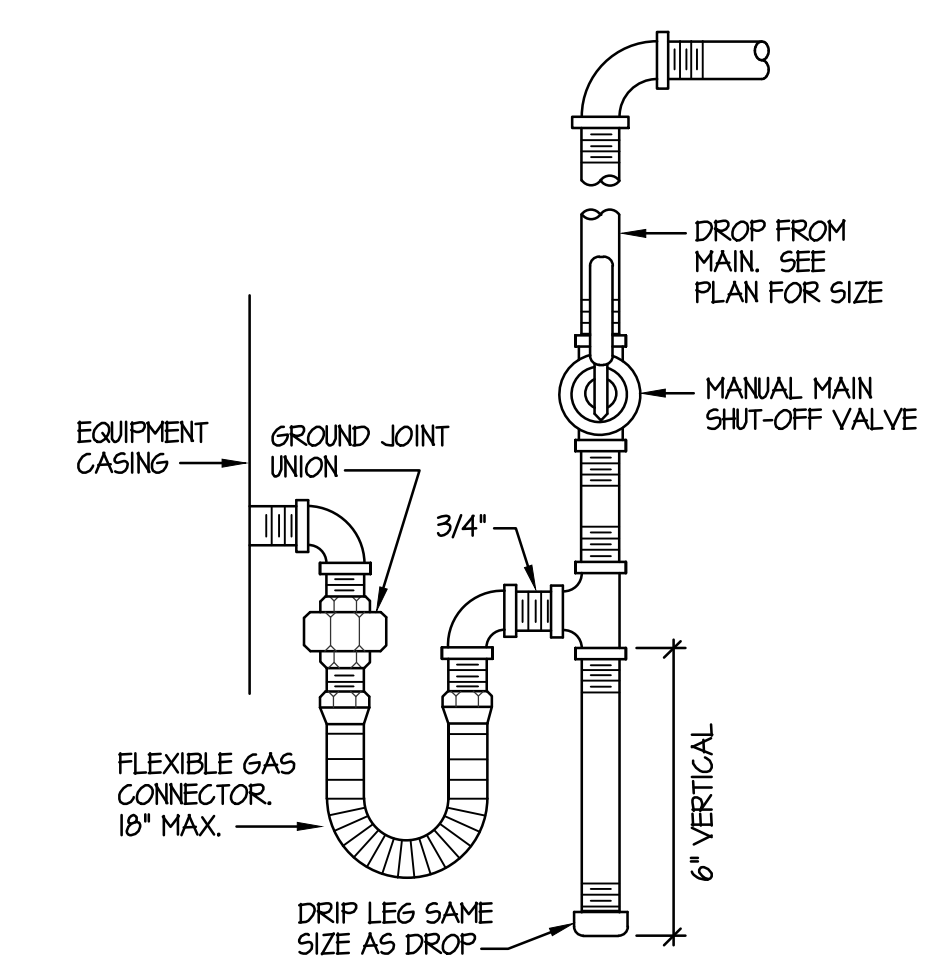
C PREP SINK PIPING ELEVATION
 NO SCALE



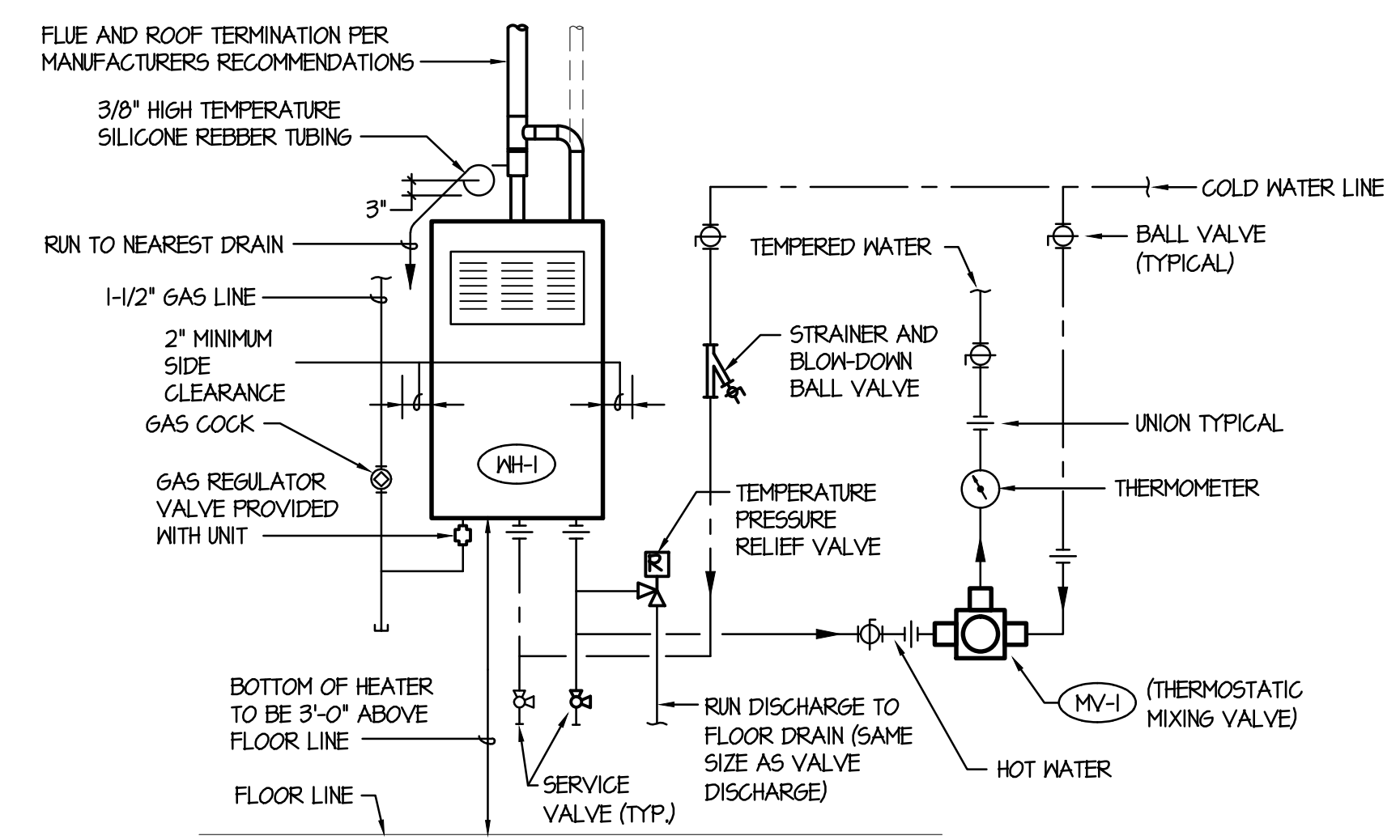
D MIXING VALVE DETAIL
 NO SCALE



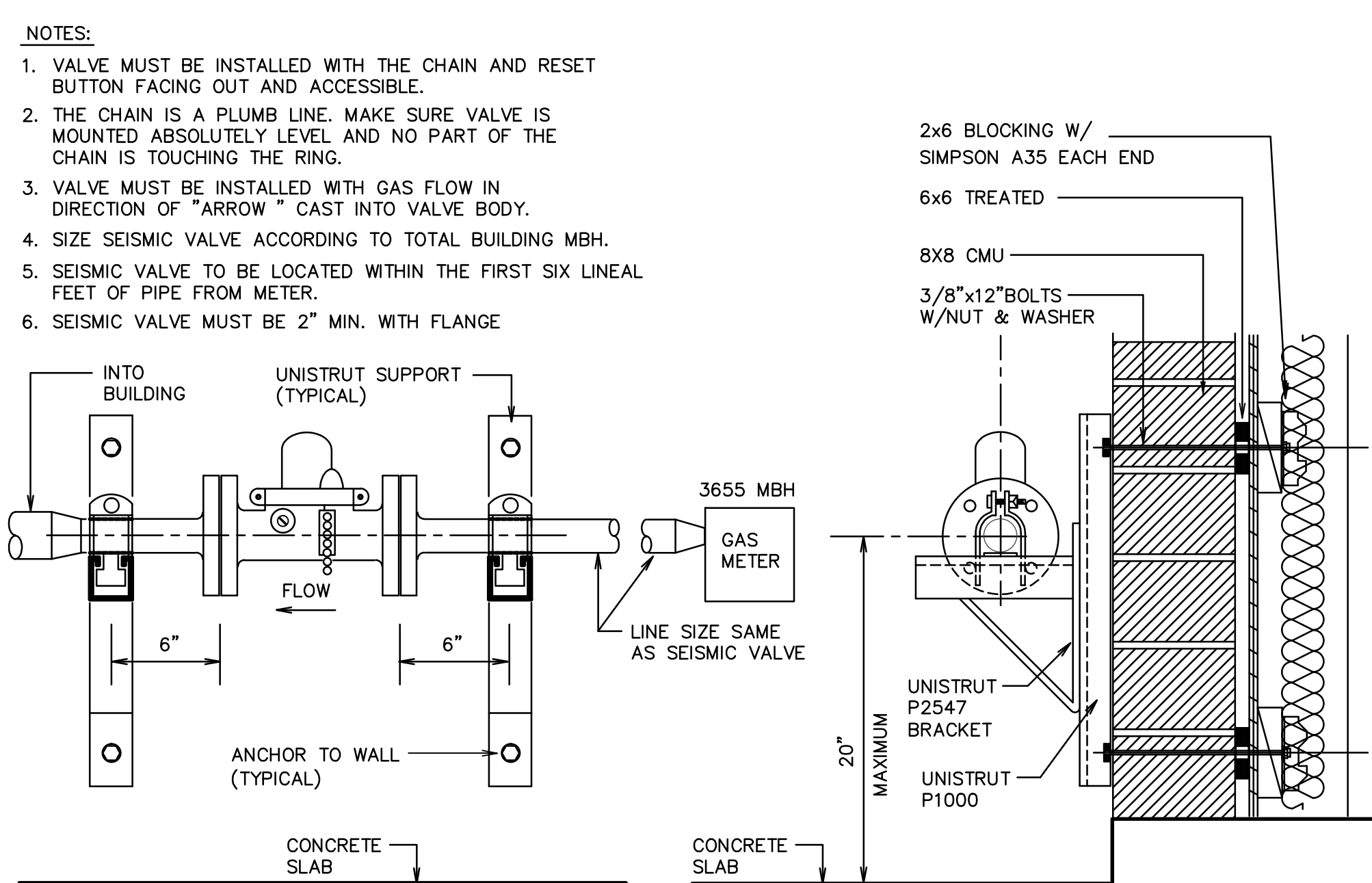
E WASHER BOX PIPING DIAGRAM
 NO SCALE



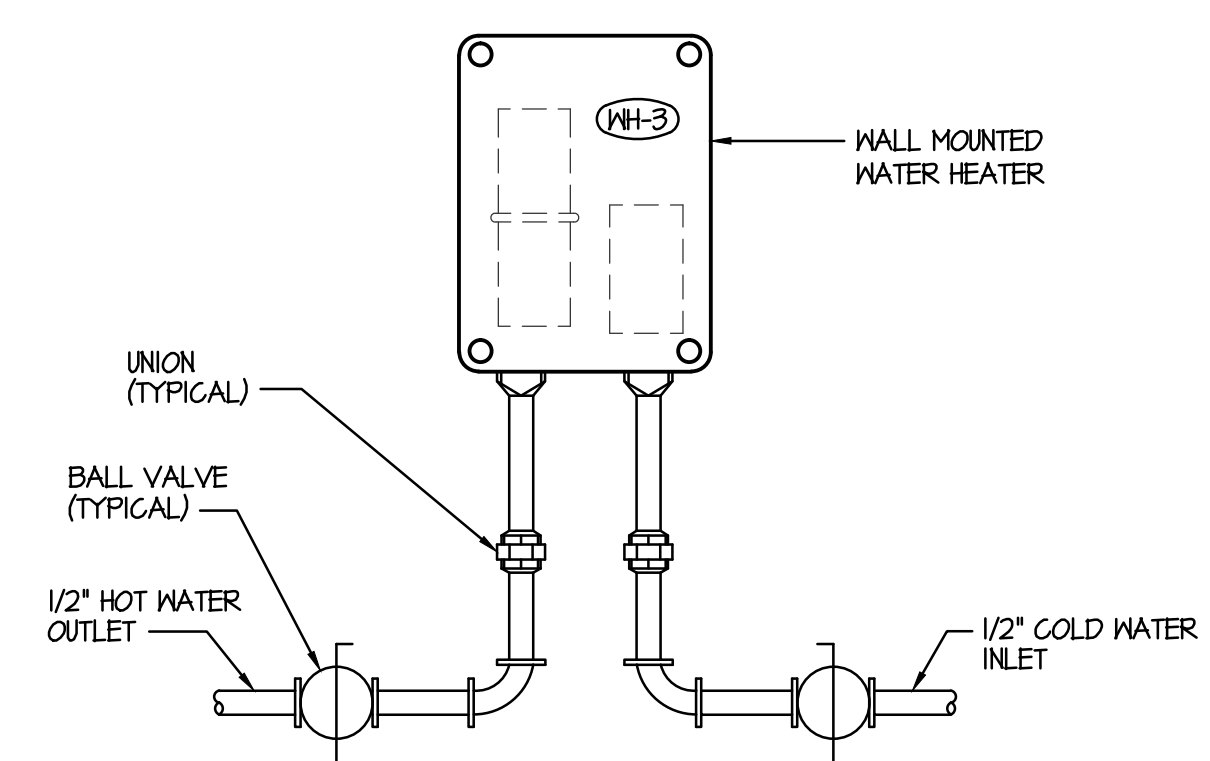
F GAS LINE CONNECTION DETAIL
 NO SCALE



G TANKLESS WATER HEATER & MIXING VALVE DETAIL
 NO SCALE



H SEISMIC GAS VALE DETAIL
 NO SCALE



I ELECTRIC INSTANTANEOUS WATER HEATER DETAIL
 NO SCALE

- NOTES:
1. VALVE MUST BE INSTALLED WITH THE CHAIN AND RESET BUTTON FACING OUT AND ACCESSIBLE.
 2. THE CHAIN IS A PLUMB LINE. MAKE SURE VALVE IS MOUNTED ABSOLUTELY LEVEL AND NO PART OF THE CHAIN IS TOUCHING THE RING.
 3. VALVE MUST BE INSTALLED WITH GAS FLOW IN DIRECTION OF "ARROW" CAST INTO VALVE BODY.
 4. SIZE SEISMIC VALVE ACCORDING TO TOTAL BUILDING MBH.
 5. SEISMIC VALVE TO BE LOCATED WITHIN THE FIRST SIX LINEAL FEET OF PIPE FROM METER.
 6. SEISMIC VALVE MUST BE 2" MIN. WITH FLANGE

ORIGINAL DRAWING SIGNED BY: DWAYNE C. SUDWEERS
 DATE ORIGINAL SIGNED: April 15, 2018
 ORIGINAL ON FILE AT ENGINEERED SYSTEMS ASSOCIATES
 1355 EAST CENTER, POCATELLO, IDAHO 83201

MECHANICAL REGISTERED PROFESSIONAL ENGINEER
 91171PE
 OREGON MAY 11, 2016
 DWAYNE C. SUDWEERS
 EXPIRES: 06/30/2018

Engineered Systems Associates
 1355 EAST CENTER
 POCATELLO, IDAHO 83201
 PHONE: (208) 233-0501
 FAX: (208) 233-0529
 EMAIL: esa@engsystems.com
 ESA JOB NUMBER: 16038

Project for:
THE CHURCH OF JESUS CHRIST OF LATTER-DAY SAINTS
 BISHOPS STOREHOUSE
 SPRINGFIELD OREGON

Project Number:
 WEC 15504
 Plan Series: JRWA Proj. 662
 Property Number:
 541-8550

Sheet Title:
PLUMBING DETAILS

Sheet:
P502