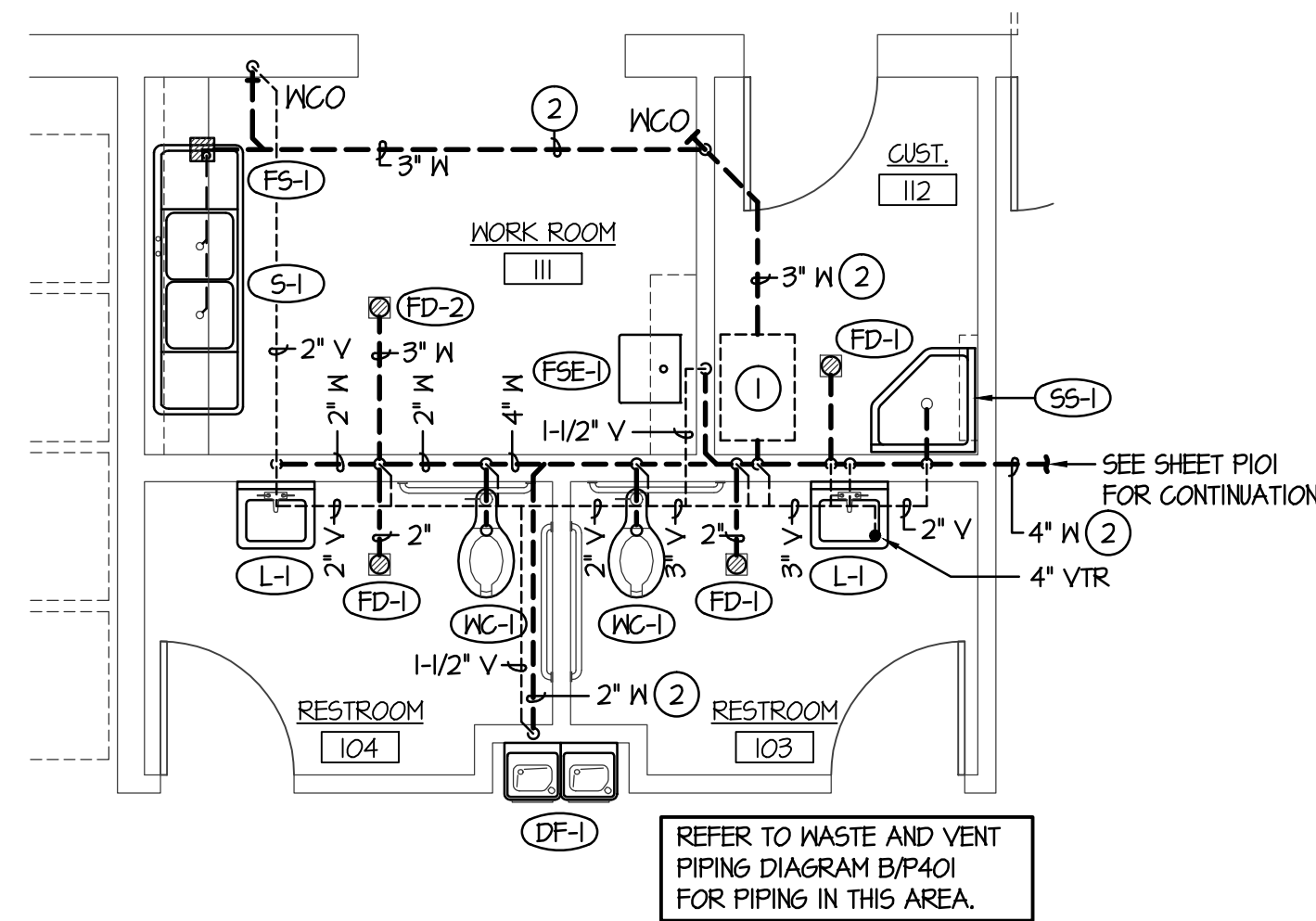


A WATER PIPING ISOMETRIC
NO SCALE

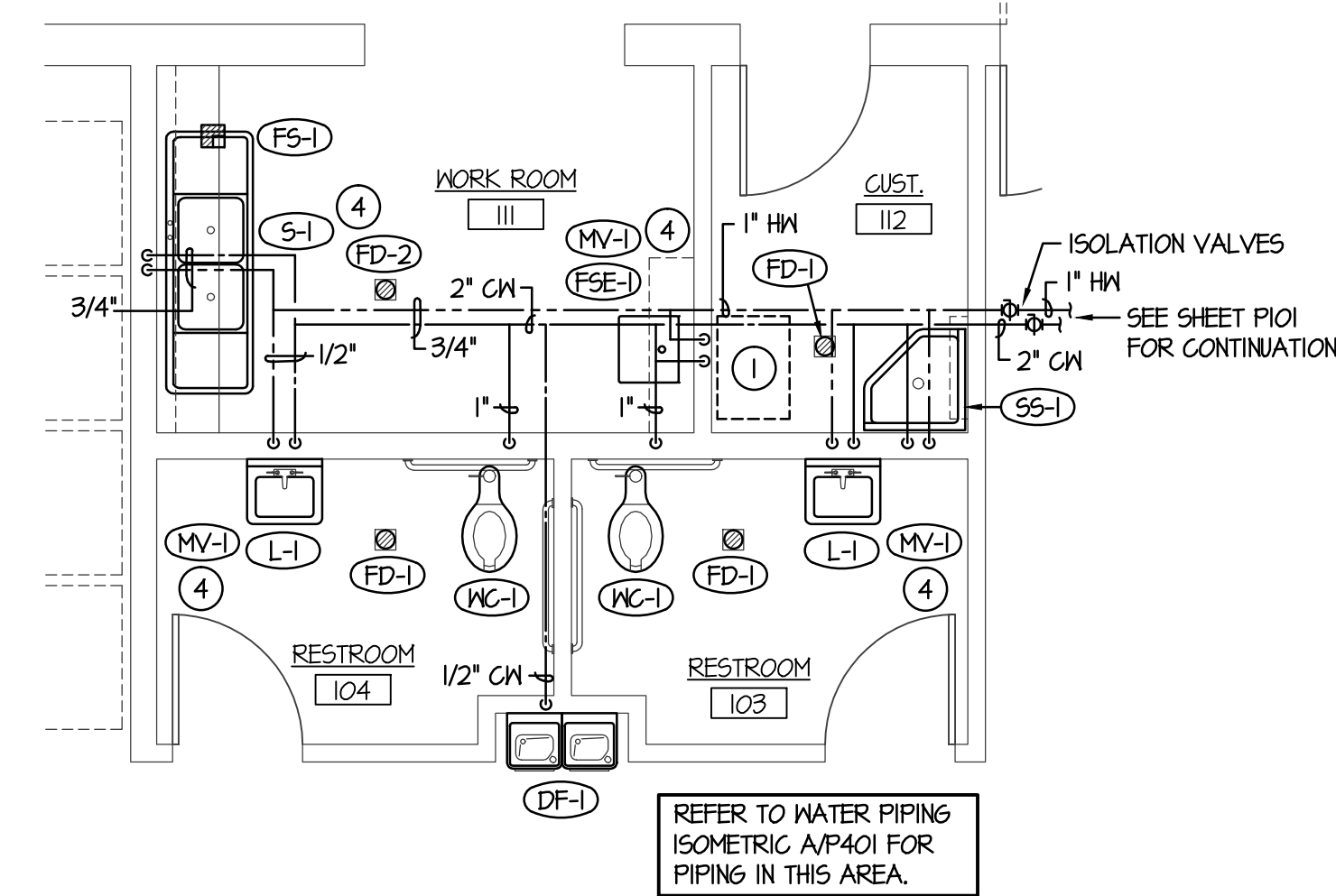
REFER TO ENLARGED PLAN 2/P401 FOR FIXTURES.



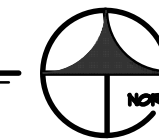
1 ENLARGED WASTE AND VENT PIPING PLAN
SCALE: 1/4" = 1'-0"



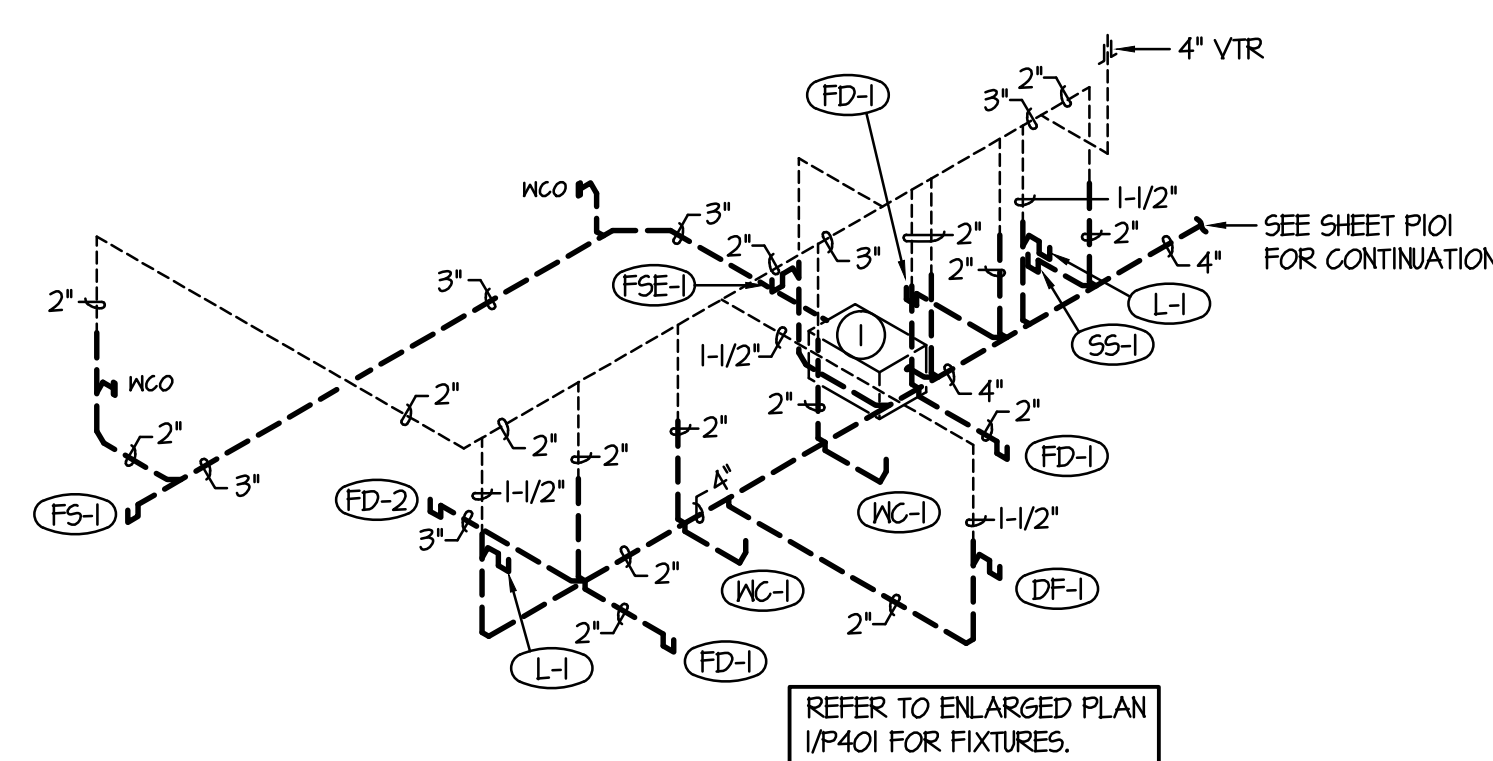
NORTH



2 ENLARGED WATER PIPING PLAN
SCALE: 1/4" = 1'-0"

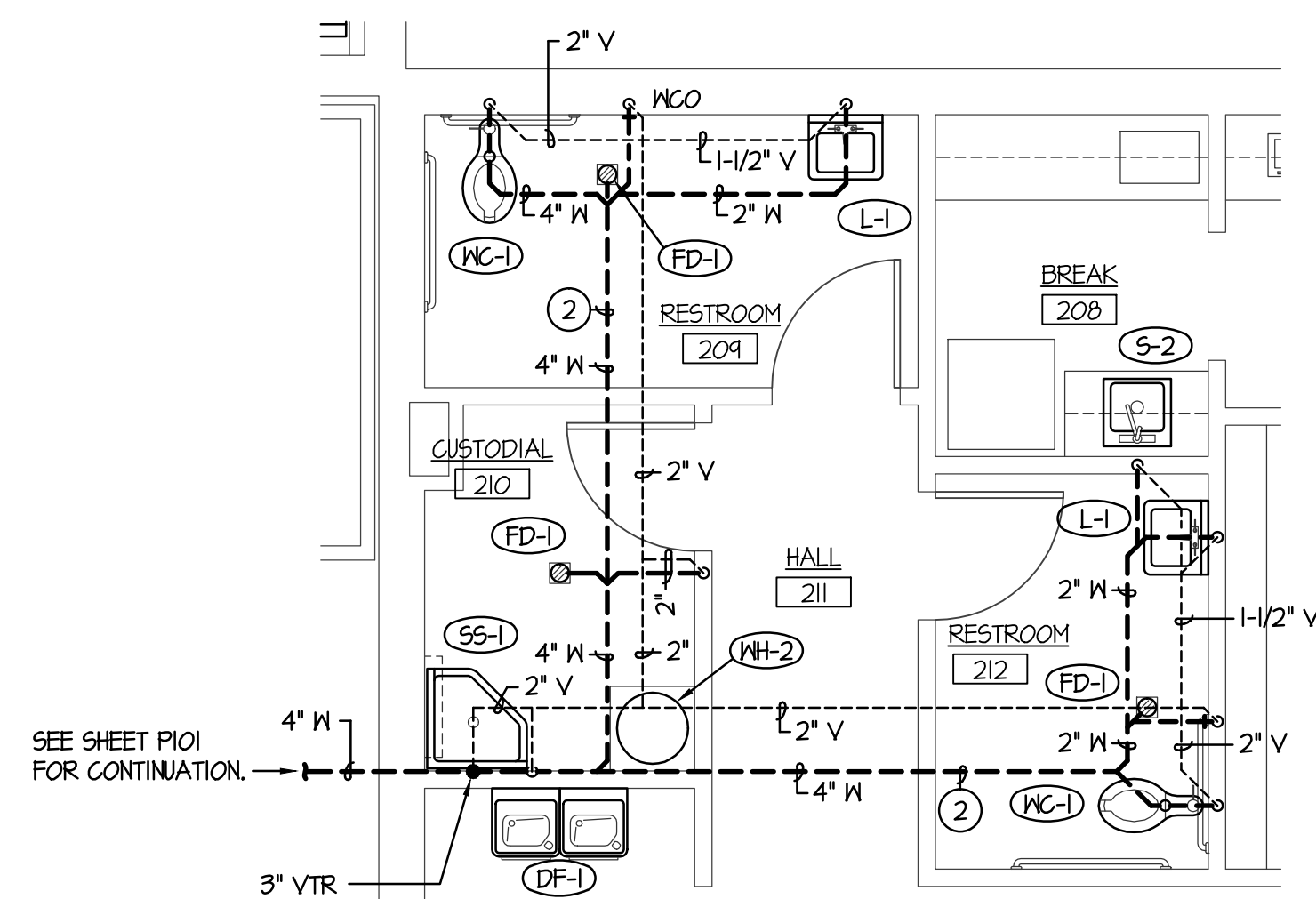


NORTH

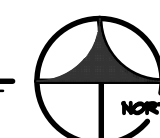


B WASTE AND VENT PIPING DIAGRAM
NO SCALE

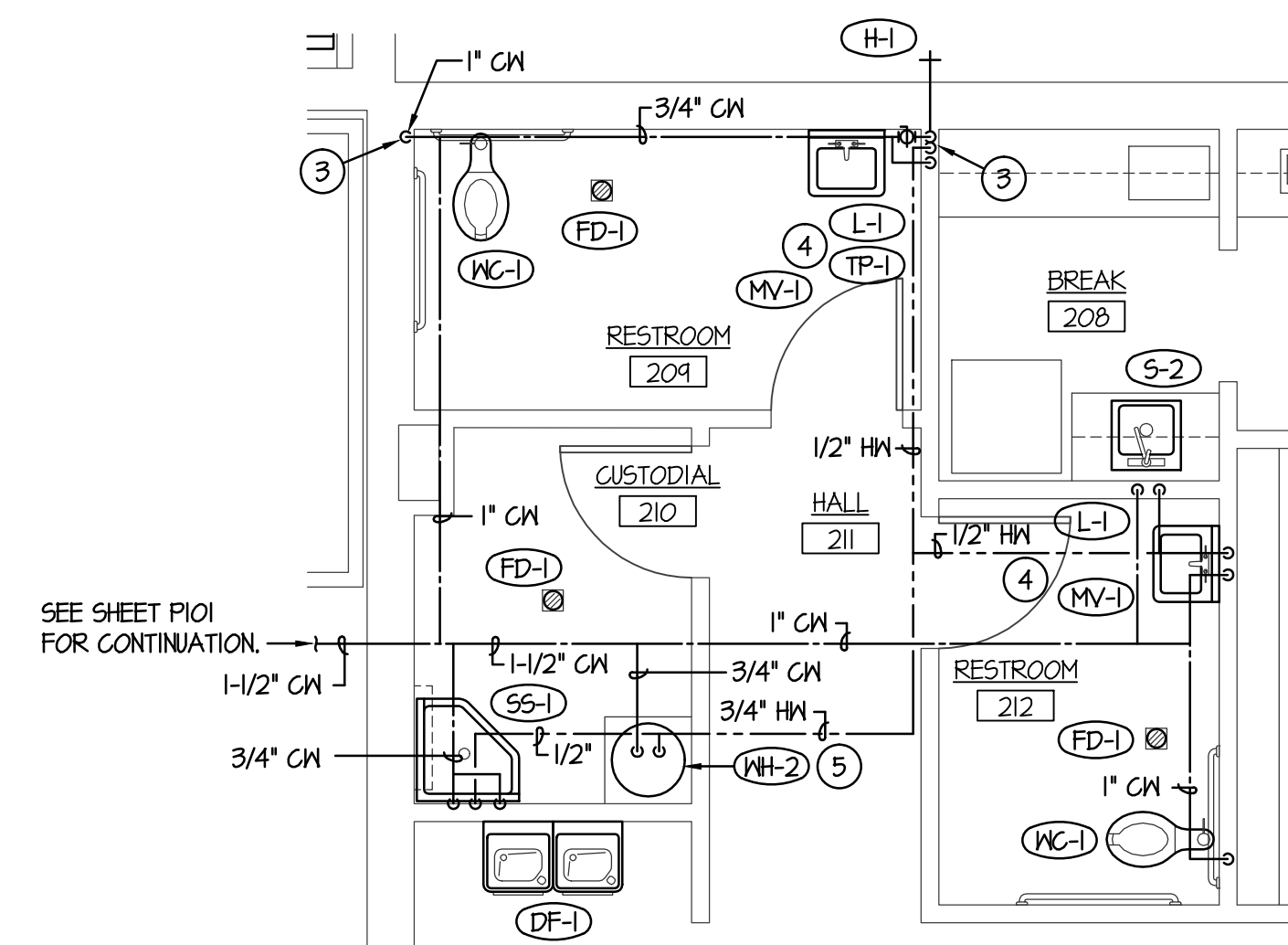
REFER TO ENLARGED PLAN 1/P401 FOR FIXTURES.



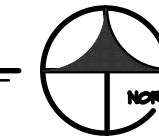
3 ENLARGED WASTE AND VENT PIPING PLAN
SCALE: 1/4" = 1'-0"



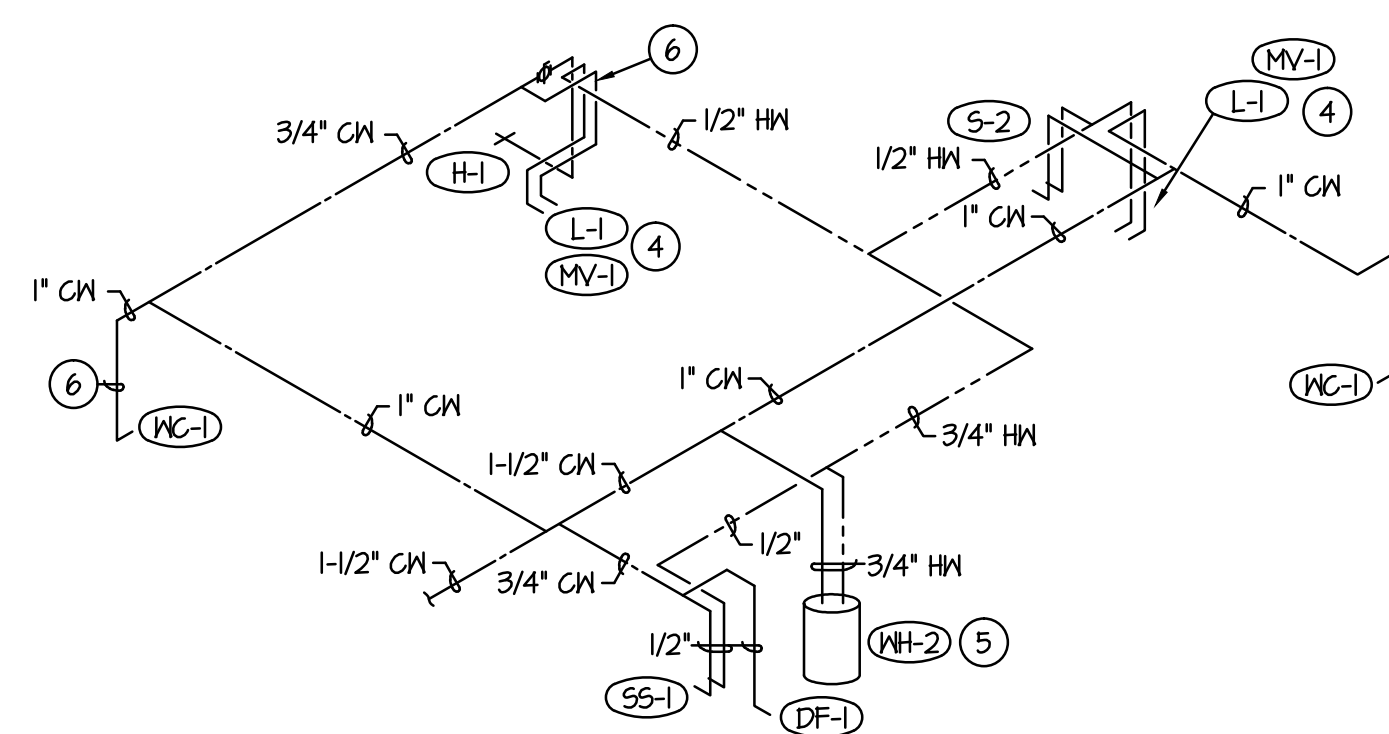
NORTH



4 ENLARGED WATER PIPING PLAN
SCALE: 1/4" = 1'-0"



NORTH



C WATER PIPING ISOMETRIC
NO SCALE

PLAN NOTES:

- 1 PROVIDE RECESSED GREASE INTERCEPTOR EQUAL TO ROCKFORD MODEL RP-35. PROVIDE FLOW CONTROL AND EXTENSIONS AS REQUIRED TO BE FLUSH WITH FLOOR. INSTALL PER MANUFACTURER'S RECOMMENDATIONS AND ALL LOCAL AND NATIONAL CODES.
- 2 WASTE LINE TO BE RUN BELOW FLOOR. GRADE PIPING AT 1/4" SLOPE PER FOOT DOWNWARD IN DIRECTION OF FLOW.
- 3 DROP WATER PIPING DOWN IN INTERIOR MALL. EXTEND OUT BELOW FIXTURE FOR CONNECTION. PROVIDE STOPS AT WALL PENETRATION. DO NOT PLACE WATER LINES IN EXTERIOR WALLS.
- 4 LOCATE TRAP PRIMER AND/OR MIXING VALVE BELOW LAVATORY OR SINK. REFER TO DETAIL E/P501 FOR PIPING CONNECTIONS TO TRAP PRIMER AND TO DETAIL D/P502 FOR PIPING CONNECTIONS TO MIXING VALVE. MIXING VALVE TO HAVE LINE SIZE CONNECTIONS. REFER TO WATER PIPING ISOMETRICS ON THIS SHEET FOR PIPE SIZES.
- 5 20 GALLON ELECTRIC WATER HEATER. MOUNT ON 2" THICK RIGID INSULATION BOARD. PROVIDE RECIRCULATING PUMP WITH 3 GPM FLOW AT 5' HEAD. REFER TO DETAIL A/P502 FOR TYPICAL INSTALLATION, EXPANSION TANK, MIXING VALVE AND PIPE CONNECTIONS.

Architect / Engineer:



Stamp:

SPRINGFIELD OREGON
BISHOPS
STOREHOUSE
SPRINGFIELD OREGON

Project for:
THE CHURCH OF
JESUS CHRIST
OF LATTER-DAY SAINTS

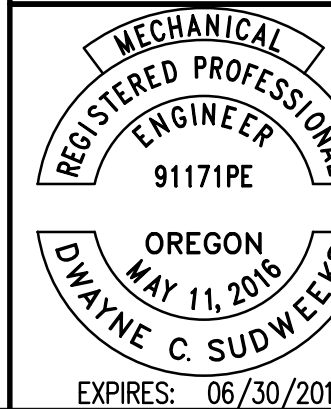
Project Number:
WEC 15504
Plan Series: JRWA Proj. 662
Property Number:
541-8550

Sheet Title:
LARGE
SCALE
PLUMBING
PLANS AND
PIPING
ISOMETRICS

Sheet:

P401

ORIGINAL DRAWING SIGNED BY: DWAYNE C. SUDWEERS
DATE ORIGINAL SIGNED: April 15, 2016
ORIGINAL ON FILE AT ENGINEERED SYSTEMS ASSOCIATES
1355 EAST CENTER, POCATELLO, IDAHO 83201



Engineered Systems Associates
1355 EAST CENTER
POCATELLO, IDAHO 83201
PHONE: (208) 233-0501
FAX: (208) 233-0529
EMAIL: esa@engsystems.com
ESA JOB NUMBER: 16038