

Stamp:

Project for:
THE CHURCH OF JESUS CHRIST OF LATTER-DAY SAINTS
 BISHOPS STOREHOUSE
 SPRINGFIELD OREGON

Project Number:
 WEC 15504
 Plan Series: JRWA Proj. 662
 Property Number:
 541-8550

Sheet Title:
PLUMBING FLOOR PLAN

Project Number:
 WEC 15504
 Plan Series: JRWA Proj. 662
 Property Number:
 541-8550

Sheet Title:
PLUMBING FLOOR PLAN

Sheet:
P101

PLAN NOTES:

- 1 WATER METER AND PRESSURE REDUCING STATION. REFER TO DETAIL B/P502 FOR TYPICAL INSTALLATION AND PIPING CONNECTIONS.
- 2 DROP ROOF DRAIN PIPING DOWN THRU FLOOR. EXTEND OUT THRU EXTERIOR WALL BELOW GRADE. REFER TO SITE PLAN FOR CONNECTION TO STORM SEWER SYSTEM.
- 3 COOLER AND FREEZER UNITS AND ALL ASSOCIATED REFRIGERANT AND DRAIN PIPING BY FREEZER AND COOLER CONTRACTOR. COORDINATE ALL DUCTWORK AND PIPING WITH THESE UNITS AND PIPING.
- 4 PROVIDE ACCESS FOR ALL H-I VALVES. LABEL EACH 'OUTSIDE HYDRANT SHUT-OFF VALVE'.
- 5 UNIT HEATER PROVIDED AND INSTALL BY MECHANICAL CONTRACTOR. ROUGH-IN AND CONNECT 1" GAS LINE WITH SHUT-OFF VALVE AND FLEXIBLE HOSE. REFER TO DETAIL F/P501 FOR TYPICAL GAS LINE CONNECTION.
- 6 RISE 1" GAS LINE UP BELOW ROOF TOP EQUIPMENT. PROVIDE SHUT-OFF VALVE AND DRIP LEG BELOW ROOF. EXTEND GAS LINE OUT THRU ROOF CURB WALL ABOVE ROOF FOR LOCAL SHUT-OFF VALVE ABOVE ROOF. REFER TO DETAIL F/P501 FOR TYPICAL GAS PIPING INSTALLATION.
- 7 RISE 2" VENT LINE UP FROM BELOW FLOOR TO AS HIGH AS POSSIBLE. RIN VENT LINE ABOVE COOLER UNITS AS SHOWN.
- 8 ENLARGE 2" VENT TO EXTEND 3" VENT UP THRU ROOF AS REQUIRED BY CODE.
- 9 WASTE PIPING TO BE RUN BELOW FLOOR. GRADE PIPING AS 1/8" SLOPE PER FOOT DOWNWARD IN DIRECTION OF FLOW.
- 10 RISE 2" VENT LINE UP TO ABOVE MEZZANINE FLOOR AND CONNECT TO 4" VTR. REFER TO MEZZANINE PLAN (THIS SHEET) FOR CONTINUATION.
- 11 RISE 2" VENT LINE AND 3/4" HOT AND COLD WATER LINES UP IN WALL TO MEZZANINE LEVEL ABOVE. OFFSET WATER PIPING IN CEILING SPACE OF MAIN LEVEL AS REQUIRED TO FEED WASHING MACHINE HOOK-UP AND SERVICE SINK. REFER TO MEZZANINE PLAN (THIS SHEET) FOR CONTINUATION.
- 12 REFER TO LARGE SCALE MEZZANINE PLAN (THIS SHEET) FOR CONTINUATION OF PIPING.
- 13 CAP 1" COLD WATER AND 3/4" HOT WATER LINES FOR FUTURE CONNECTION. PROVIDE SHUT-OFF VALVE IN EACH LINE.
- 14 MAINTAIN CLEARANCE FROM PIPING AND EQUIPMENT AROUND ROOF ACCESS HATCHES OR DOORS.
- 15 RISE WATER HEATER VENTS UP AND EXTEND THRU ROOF WITH CONCENTRIC TYPE FITTING. REFER TO DETAIL J/P501 FOR TYPICAL INSTALLATION.
- 16 RUN PIPING AS HIGH AS POSSIBLE THRU WAREHOUSE. SUPPORT FROM WALLS OR ROOF STRUCTURE. SEE DETAIL K/P501 AND B/P502 FOR TYPICAL SUPPORTS.

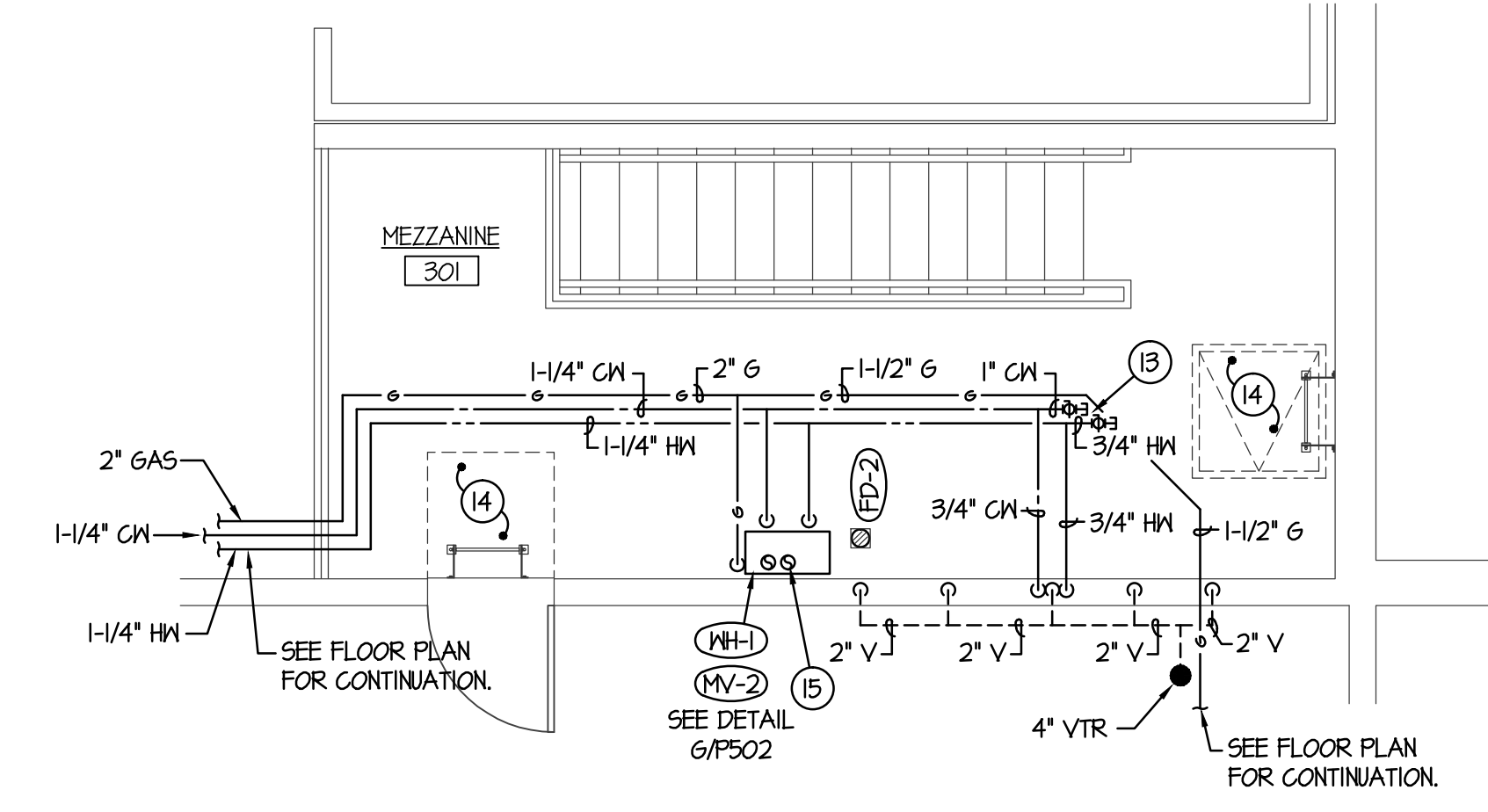
GENERAL NOTES:

- 1- REFER TO PLUMBING FIXTURE SCHEDULE ON SHEET P601 FOR INDIVIDUAL FIXTURE CONNECTION SIZES.
- 2- COORDINATE ALL PLUMBING WITH DUCTWORK, BUILDING STRUCTURE, AND ALL OTHER TRADES.
- 3- ALL PLUMBING SHALL COMPLY WITH THE MOST STRINGENT OF APPLICABLE CODES, ORDINANCES, OR SPECIFICATIONS.
- 4- RUN ALL GAS, VENT AND WATER PIPING THRU TRUSS SPACE WHEREVER POSSIBLE. ALL WASTE LINES TO BE BELOW FLOOR AS CALLED OUT.
- 5- ALL ROOF DRAIN PIPING IS SHOWN ON SHEET P102. ROOF DRAIN AND OVERFLOW DRAIN LINES TO BE GRADED AT 1/8" SLOPE PER FOOT DOWN IN DIRECTION OF FLOW. COORDINATE LINE ROUTING WITH STRUCTURE AND ALL OTHER TRADES.
- 6- REFER TO SHEET P601 FOR BALANCE OF GENERAL NOTES PERTAINING TO ALL SHEETS.

ORIGINAL DRAWING SIGNED BY: DWAYNE C. SUDWEERS
 DATE ORIGINAL SIGNED: April 15, 2018
 ORIGINAL ON FILE AT ENGINEERED SYSTEMS ASSOCIATES
 1355 EAST CENTER, POCATELLO, IDAHO 83201

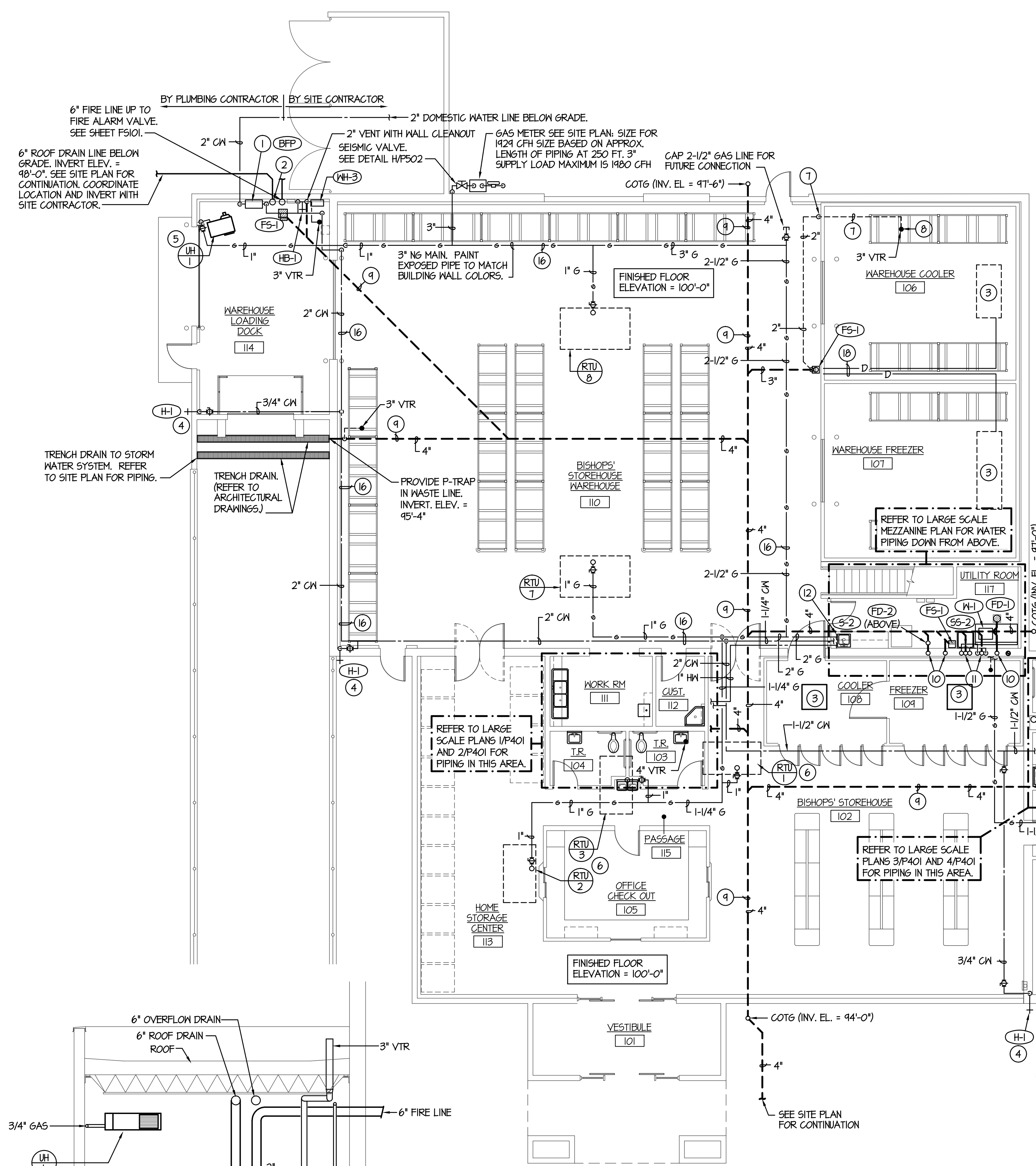
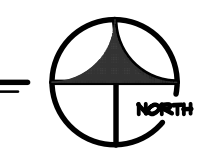
MECHANICAL REGISTERED PROFESSIONAL ENGINEER
 91171PE
DWAYNE C. SUDWEERS
 OREGON
 MAY 11, 2018
 EXPIRES: 06/30/2018

Engineered Systems Associates
 1355 EAST CENTER
 POCATELLO, IDAHO 83201
 PHONE: (208) 233-0501
 FAX: (208) 233-0529
 EMAIL: esa@engsystems.com
 ESA JOB NUMBER: 16038



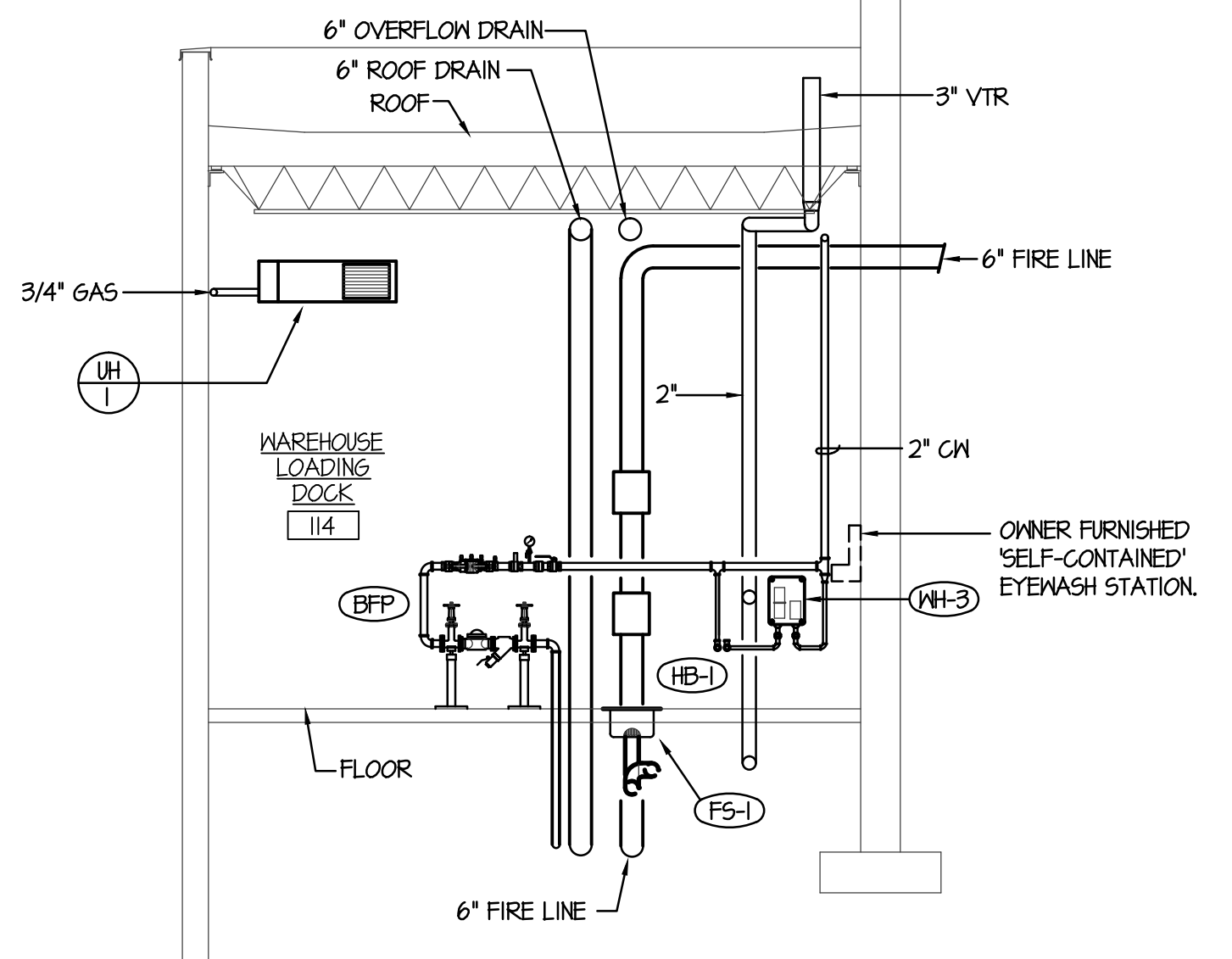
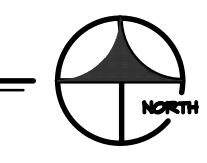
MEZZANINE FLOOR PLAN

SCALE: 1/4" = 1'-0"



PLUMBING FLOOR PLAN

SCALE: 1/8" = 1'-0"



MECHANICAL ELEVATION

SCALE: 1/8" = 1'-0"

GAS LOADS

MARK	BTU INPUT	CFH
RTU-1	105,000	105
RTU-2	65,000	65
RTU-3	65,000	65
RTU-4	65,000	65
RTU-5	105,000	105
RTU-6	65,000	65
RTU-7	105,000	105
RTU-8	105,000	105
UH-1	60,000	60
NH-1	194,000	194
FUTURE	1,000,000	1000
TOTALS	1,434,000	1434
DEVELOPED LENGTH	250'	
BUILDING PRESSURE	5 OZ	
PIPE SIZE	3"	