

DESIGN CONDITIONS	OUTSIDE	INSIDE
WINTER	20°F	70°F
SUMMER	92°F db, 61°F wb	75°F db, 64°F wb

### ROOFTOP UNIT SCHEDULE ①

GENERAL UNIT INFORMATION			FAN SECTION						UNIT MCA	MAX FUSE SIZE	FILTERS NUMBER AND SIZE H X W X D	COOLING SECTION					HEATING SECTION			REMARKS ②③④⑤					
MARK	AREA SERVED	MINIMUM OUTSIDE AIR	WHEEL DIA.	① TOTAL C.F.M.	EXT. S.P. IN. H <sub>2</sub> O.	H.P.	VOLTS	Φ				R.P.M.	FACE AREA SQ. FT.	ROWS/ FPI	TOTAL MBH	AIR IN °F DB	AIR IN °F WB	AIR OUT °F DB	AIR OUT °F WB		SEER OR EER RATING	GAS (MBH) ① INPUT	OUTPUT	TEMP. RISE AT ELEV.	
RTU-1	STOREHOUSE 102	170	11"	1200	1.25	1/2	208	1	825	32.0	45	(4) 16x20x2	7.8	3/14	36.0	75	61	55	63	13.0	105	84	61°F	KGA03654D	⑥
RTU-2	STOREHOUSE 113	100	10"	800	1.0	1/4	208	1	825	21.0	30	(4) 16x20x2	7.8	3/14	24.0	75	61	55	63	13.0	65	52	57°F	KGA02454D	
RTU-3	OFFICE 105	240	10"	1000	1.0	1/4	208	1	825	22.0	35	(4) 16x20x2	7.8	3/14	30.0	75	61	55	63	14.0	65	52	45°F	KGA03054D	
RTU-4	CONFERENCE 214	300	10"	1000	1.0	1/4	208	1	825	22.0	35	(4) 16x20x2	7.8	3/14	30.0	75	61	55	63	14.0	65	52	45°F	KGA03054D	
RTU-5	RECEPTION 206	170	11"	1200	1.25	1/2	208	1	825	32.0	45	(4) 16x20x2	7.8	3/14	36.0	75	61	55	63	13.0	105	84	61°F	KGA03654D	⑥
RTU-6	OFFICE 204	100	10"	800	1.0	1/4	208	1	825	21.0	30	(4) 16x20x2	7.8	3/14	24.0	75	61	55	63	13.0	65	52	57°F	KGA02454D	
RTU-7	WAREHOUSE 110	300	11"	1800	1.0	3/4	208	1	1075	40.0	30	(4) 16x20x2	7.8	3/14	54.0	75	61	55	63	13.0	108	84	43°F	KGA06054D	⑥
RTU-8	WAREHOUSE 110	300	11"	1800	1.0	3/4	208	1	1075	40.0	30	(4) 16x20x2	7.8	3/14	54.0	75	61	55	63	13.0	108	84	43°F	KGA06054D	⑥

- ① AT SITE ELEVATION OF 450'  
 ② PROVIDE WITH 14" ROOF CURB WITH VIBRATION ISOLATION RAILS, SPRING TYPE WITH 2" MIN. DEFLECTION.  
 ③ PROVIDE THROUGH BASE ELECTRIC CONNECTION AND SIDEALL GAS CONNECTION.  
 ④ PROVIDE 20A 6FI RECPTSCALE WITH WEATHER PROOF COVER AND ASSOCIATED CIRCUITRY.  
 ⑤ PROVIDE NEMA 4 FUSED DISCONNECT SWITCH. SEE ELECTRICAL SHEETS FOR SIZE.  
 ⑥ PROVIDE POWERED EXHAUST AND FULL ECONOMIZER.  
 ⑦ NUMBERS LISTED ARE LENNOX. REFER TO SPECIFICATIONS FOR OTHER APPROVED MANUFACTURES.

### DIFFUSER SCHEDULE

SYM.	SIZE	THROW	CFM ②	CONSTR.	FINISH	BRANCH DUCT	F.D.	O.B.	REMARKS ①
CD-1	9 x 9	10'	50-100	STEEL	WHITE	6"φ	NO	NO	TDC - TYPE 6
CD-2	9 x 9	10'	50-200	STEEL	WHITE	8"φ	NO	NO	TDC - TYPE 6
CD-3	12 x 12	10'	200-400	STEEL	WHITE	10"φ	NO	NO	TDC - TYPE 6
CD-4	24 x 24	10'	50-200	STEEL	WHITE	8"φ	NO	NO	TMSA - TYPE 3
CD-5	24 x 24	10'	150-300	STEEL	WHITE	10"φ	NO	NO	TMSA - TYPE 3

- ① NUMBERS LISTED ARE TITUS. SEE SPECIFICATIONS FOR OTHER APPROVED MANUFACTURES.  
 ② MAXIMUM NG. NOT TO EXCEED 25 AT MAXIMUM CFM NOTED.

### EXHAUST FAN SCHEDULE

SYM.	TYPE	C.F.M.	S.P.E.	H.P.	CHAR.	R.P.M.	CONTROL	REMARKS ①②③
EF-1	ROOF MOUNTED DOWN BLAST	400	50"	1/6	120/60/1	1260	INTERLOCK WITH RTU-2	GB-081 WITH BACK-DRAFT DAMPER. SHALL BE ENABLED DURING OCCUPIED MODE OF RTU-2.
EF-2	ROOF MOUNTED DOWN BLAST	130	38"	1/6	120/60/1	1043	WALL SWITCH	GB-070 WITH BACK-DRAFT DAMPER.
EF-3	ROOF MOUNTED DOWN BLAST	400	50"	1/6	120/60/1	1220	INTERLOCK WITH RTU-4	GB-081 WITH BACK-DRAFT DAMPER. SHALL BE ENABLED DURING OCCUPIED MODE OF RTU-4.

- ① NUMBERS LISTED ARE GREENHECK. SEE SPECIFICATIONS FOR OTHER APPROVED MANUFACTURES.  
 ② MOUNT OF 14" HIGH ROOF CURB.  
 ③ PROVIDE BIRD SCREEN.

### GRILLE & REGISTER SCHEDULE

SYM.	TYPE	SIZE	CFM ②	CONSTR.	FINISH	BRANCH DUCT	F.D.	O.B.	REMARKS ①
GR-1	WALL SA	14 x 12	550	STEEL	WHITE	14 x 12	YES	YES	1700L
RG-1	WALL RA	12 x 8	50-250	STEEL	WHITE	12 x 5	NO	NO	355R
RG-2	CEILING RA	12 x 12	50-500	STEEL	WHITE	12 x 10	NO	NO	355R
RG-3	CEILING RA	24 x 24	600-1200	STEEL	WHITE	SEE PLAN	NO	NO	355R
RG-4	WALL RA	14 x 12	550	STEEL	WHITE	14 x 12	YES	NO	355R
ER-1	CEILING EA	10 x 10	50-130	STEEL	WHITE	10 x 6	NO	YES	355R

- ① NUMBERS LISTED ARE TITUS. SEE SPECIFICATIONS FOR OTHER APPROVED MANUFACTURES.  
 ② MAXIMUM NG. NOT TO EXCEED 25 AT MAXIMUM CFM NOTED.

### UNIT HEATER SCHEDULE ③

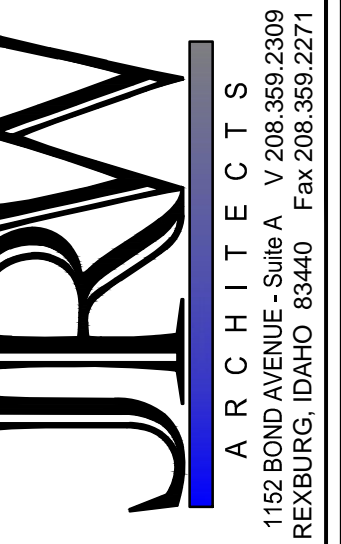
SYM.	TYPE	CFM	H.P.	CHAR.	GAS IN MBH INPUT	OUTPUT	EAT	LAT	SUP.	FUEL TYPE	FLUE	WEIGHT	SPACE SERVED	REMARKS ①
UH-1	HORIZONTAL	990	1/2	120/60/1	60	48	65°F	110°F	1/2"	NAT.	(2) 3"φ	80 lbs	LOADING DOCK 114	HDS60 ②

- ① NUMBERS LISTED ARE MODINE. SEE SPECIFICATIONS FOR OTHER APPROVED MANUFACTURES.  
 ② PROVIDE UNIT MOUNTED THERMOSTAT AND BRACKET WITH EACH UNIT.  
 ③ UNITS ARE TO BE SEPARATED COMBUSTION TYPE UNITS WITH CONCENTRIC VENT KITS THRU ROOF.

### MECHANICAL LEGEND

SYMBOL	DESCRIPTION	SYMBOL	DESCRIPTION	SYMBOL	DESCRIPTION	SYMBOL	DESCRIPTION
SA	SUPPLY AIR	CD	CONDENSATE DRAIN LINE	□	HORIZONTAL UNIT HEATER	HD	HAND DAMPER
RA	RETURN AIR	→	DIRECTION OF FLOW INDICATOR	□	SIDEWALL REGISTER (SUPPLY AIR)	FD	FIRE DAMPER AND ACCESS
OA	OUTSIDE AIR	⊗	GATE VALVE	□	SIDEWALL GRILLE (RETURN AIR)	□	RECTANGULAR SUPPLY AND RETURN AIR DUCT TAKE-OFF
REFR	REFRIGERANT	○	BALL VALVE	□	RETURN AIR GRILLE	□	TURNING VANES
AFF	ABOVE FINISHED FLOOR	—	PIPE DROP	□	CEILING DIFFUSER	□	DUCT TRANSITION
VFD	VARIABLE FREQUENCY DRIVE	—	PIPE RISE	□	EXHAUST AIR GRILLE	□	INSULATED FLEXIBLE DUCT
①	ELECTRONIC THERMOSTAT	—L	REFRIGERANT LIQUID LINE	□		□	SPIRAL DUCT
⑤	REMOTE SENSOR	—S	REFRIGERANT SUCTION LINE				
①	PLAN NOTE	□	LOCAL ATC PANEL				
EC	EQUIPMENT SYMBOL	□	ROOF TOP EXHAUST FAN				

Architect / Engineer:



1152 BOND AVENUE - Suite A V 208.359.2309  
 REXBURG, IDAHO 83440 Fax: 208.359.2271

Stamp:

Project for:  
 THE CHURCH OF JESUS CHRIST OF LATTER-DAY SAINTS  
 BISHOPS STOREHOUSE  
 SPRINGFIELD OREGON

Project Number:  
 WEC 15504  
 Plan Series: JRWA Proj. - 662  
 Property Number:  
 541-8550

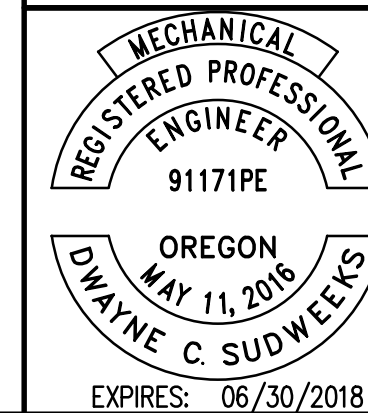
--	--	--	--	--	--	--	--	--	--

Project Number:  
 WEC 15504  
 Plan Series: JRWA Proj. - 662  
 Property Number:  
 541-8550

Sheet Title:  
 MECHANICAL SCHEDULES

Sheet:  
 M601

ORIGINAL DRAWING SIGNED BY: DWAYNE C. SUDWEERS  
 DATE ORIGINAL SIGNED: April 15, 2018  
 ORIGINAL ON FILE AT ENGINEERED SYSTEMS ASSOCIATES  
 1355 EAST CENTER, POCAATELLO, IDAHO 83201



Engineered Systems Associates  
 1355 EAST CENTER  
 POCAATELLO, IDAHO 83201  
 PHONE: (208) 233-0501  
 FAX: (208) 233-0529  
 EMAIL: eso@engsystems.com  
 ESA JOB NUMBER: 16038