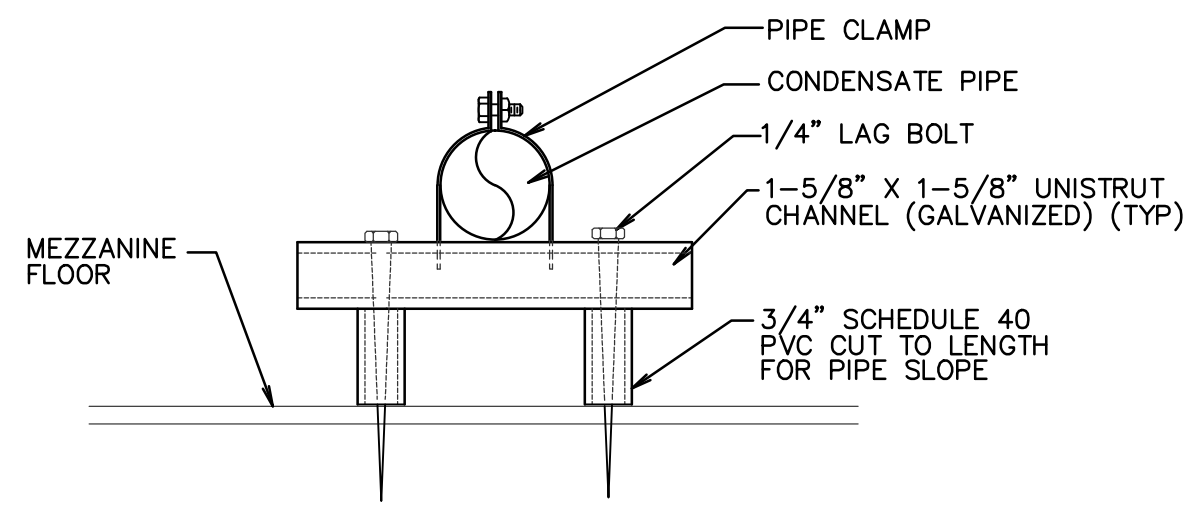
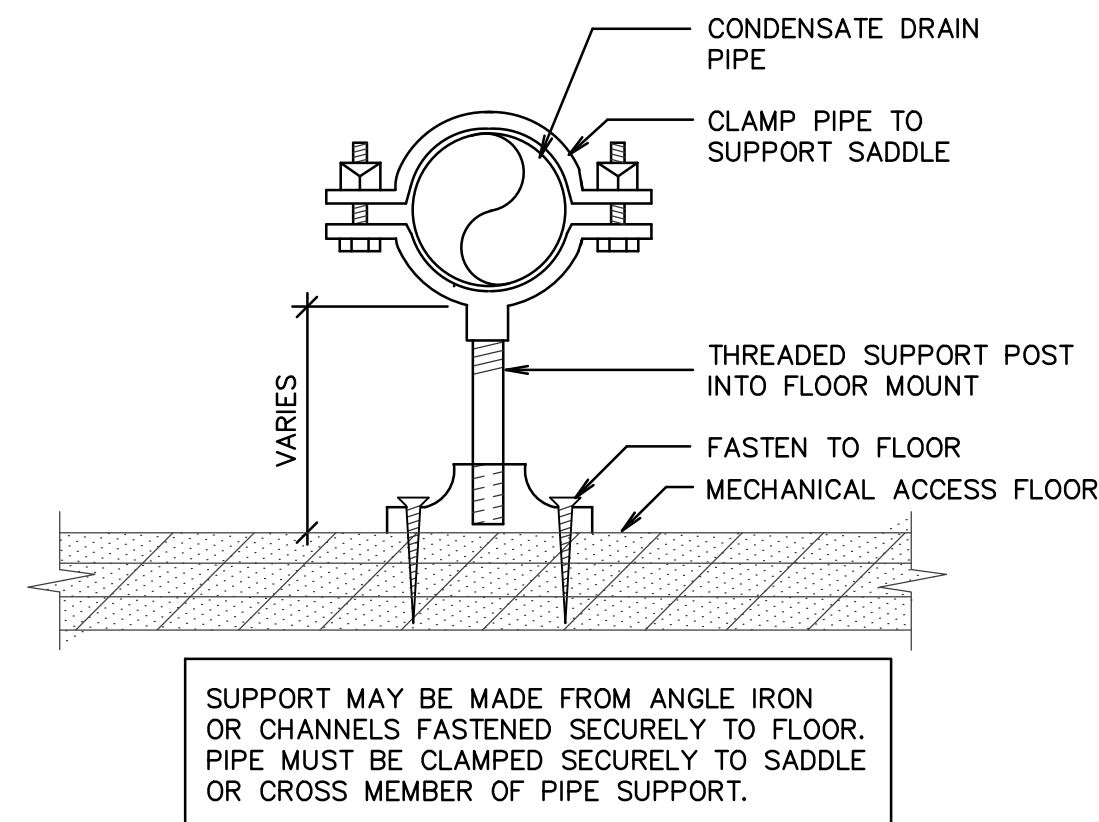
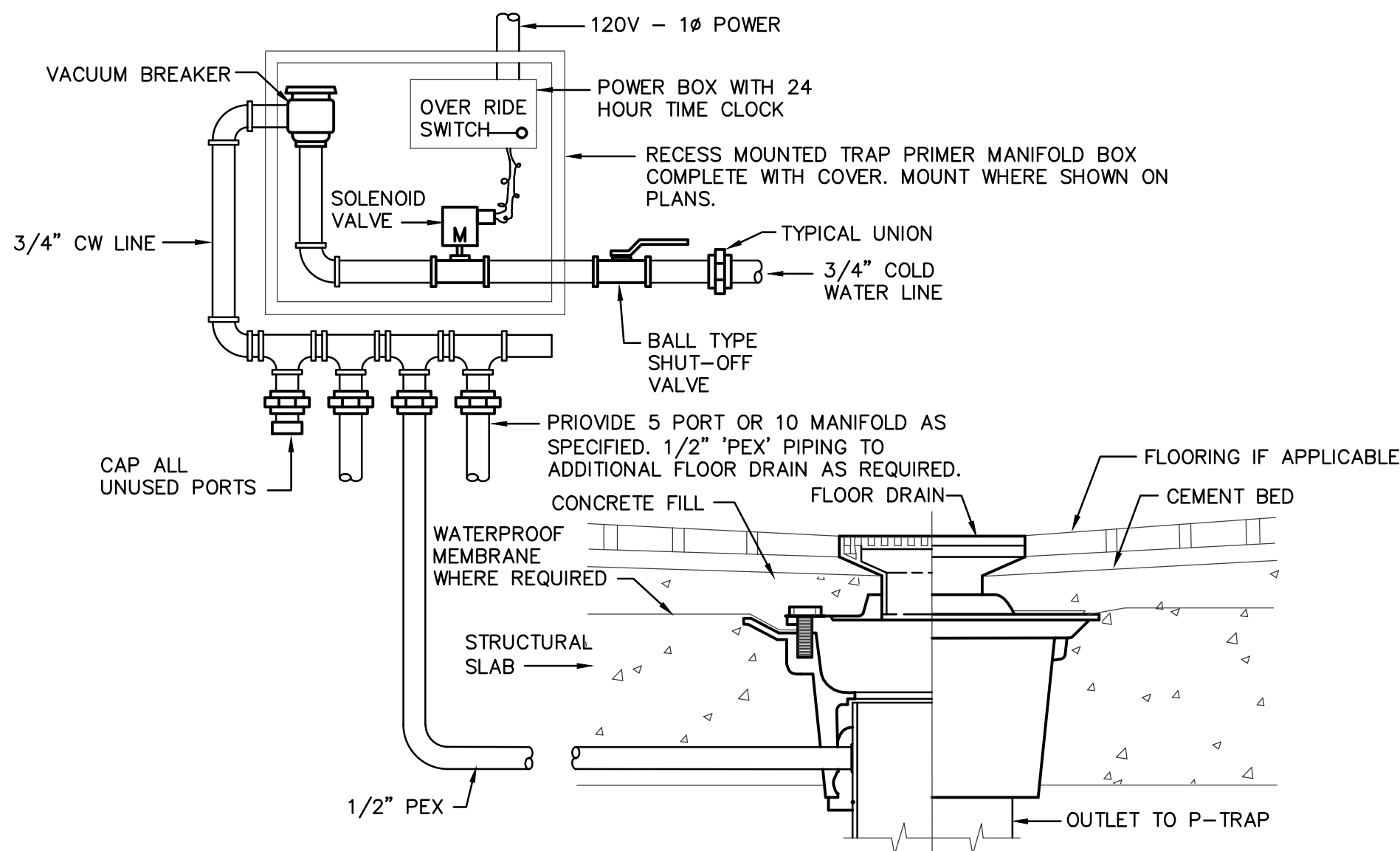


**A WALL PIPE SUPPORT DETAIL**  
SCALE: NONE

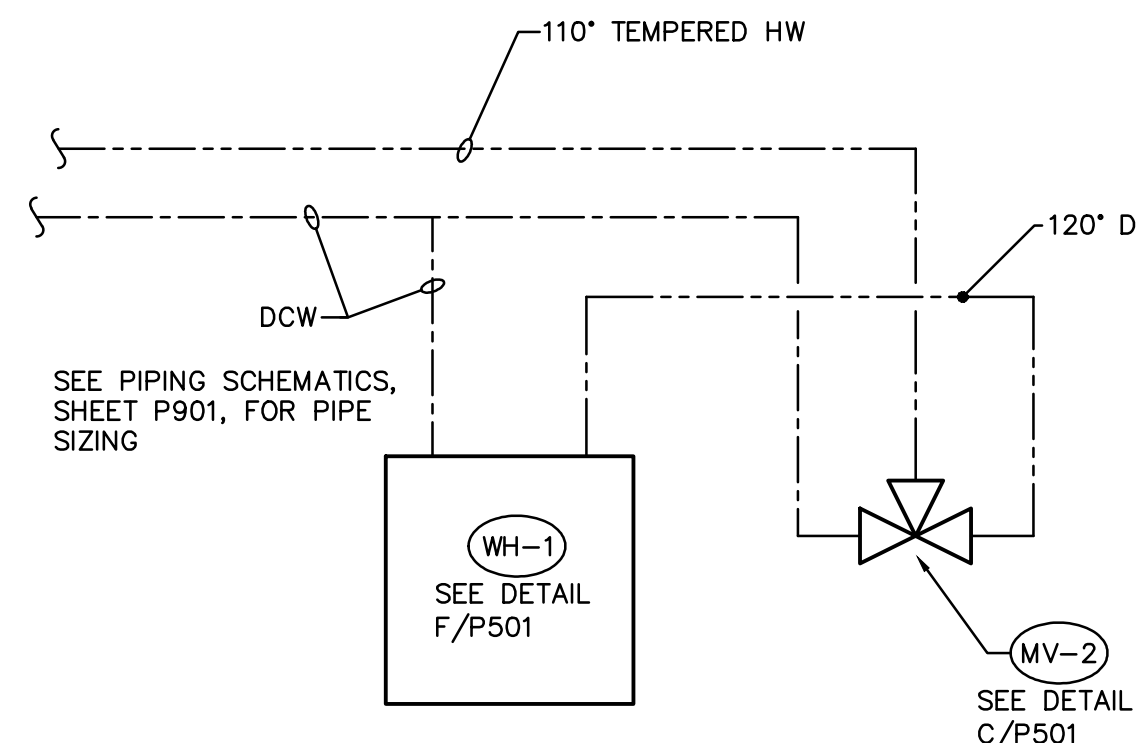


**B CONDENSATE DRAIN PIPE SUPPORT DETAIL**  
SCALE: NONE

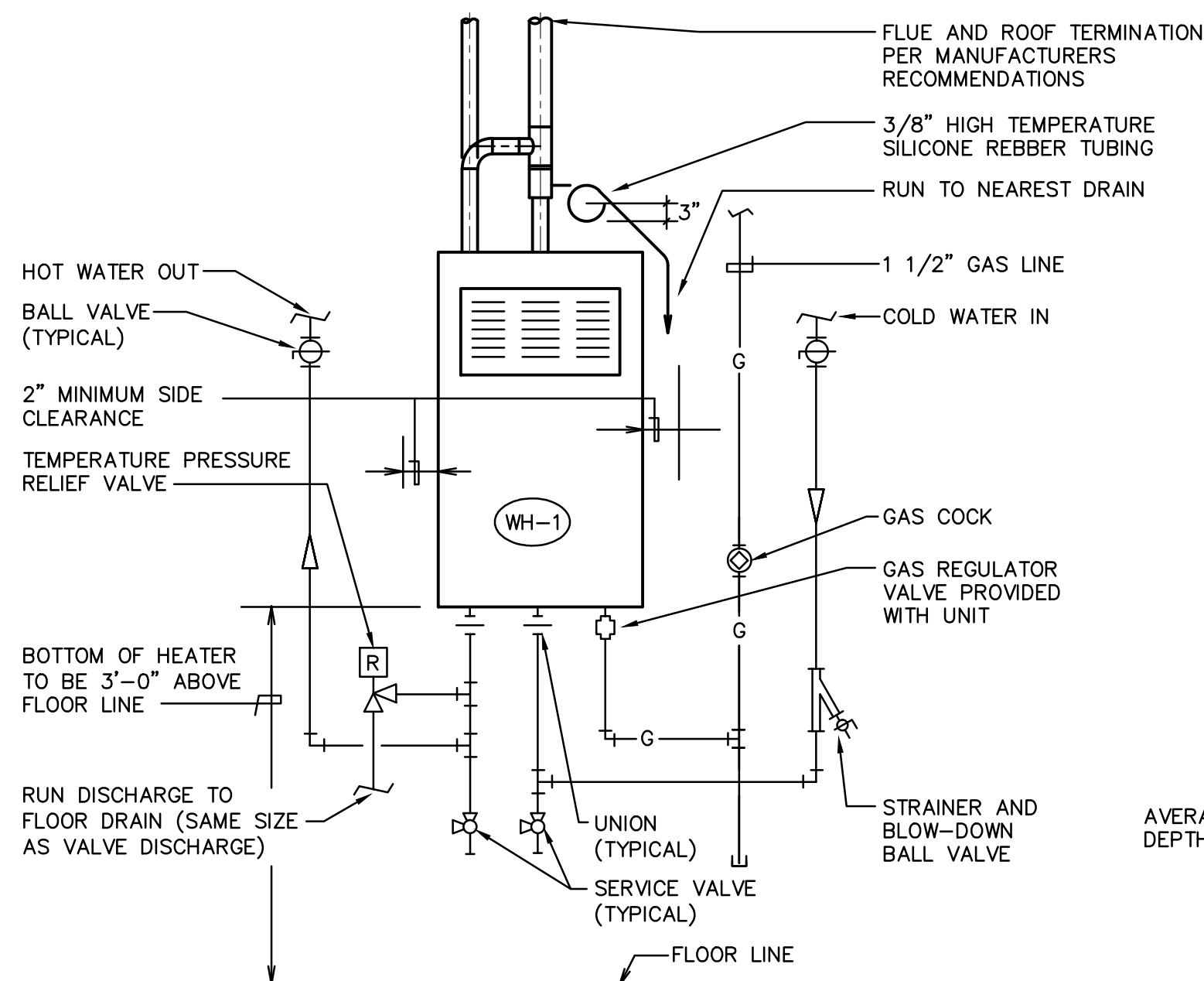
CONDENSATE DRAIN PIPING MAY BE INSTALLED USING EITHER OF THESE TWO SUPPORT METHODS. 1% MINIMUM SLOPE TO OUTLET LOCATION.



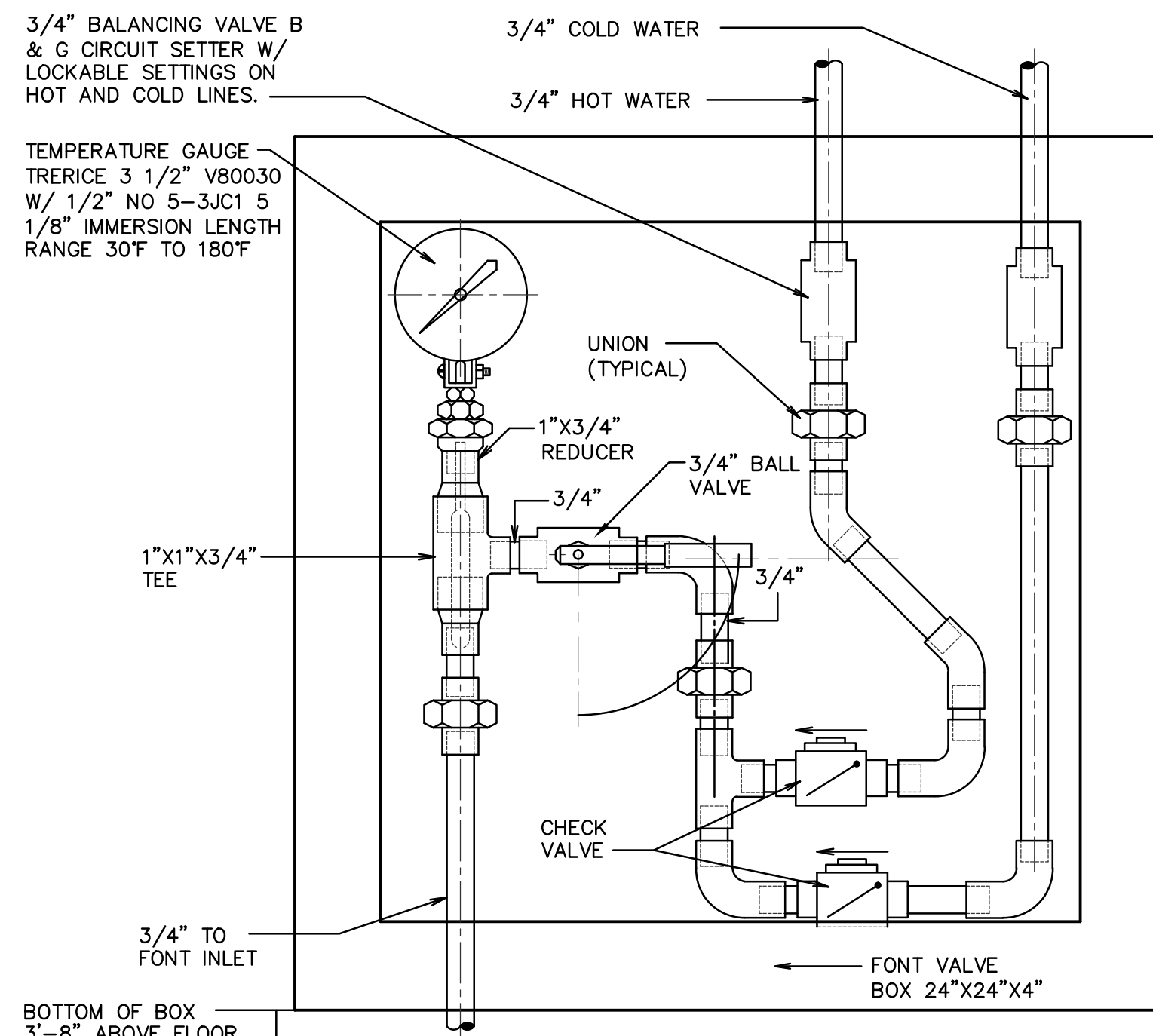
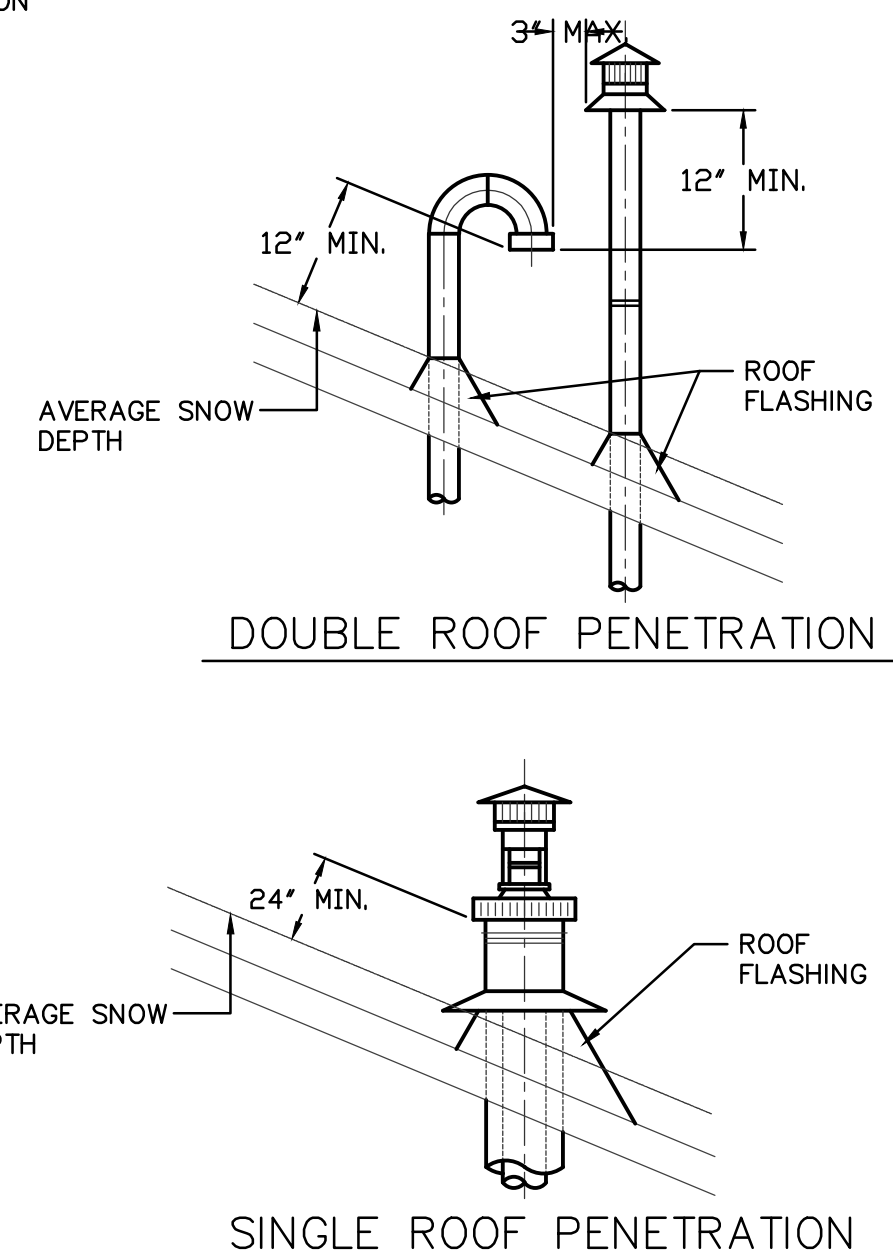
**C ELECTRONIC TRAP PRIMING MANIFOLD**  
SCALE: NONE



**D ELECTRIC WATER HEATER PIPING SCHEMATIC**  
SCALE: NONE

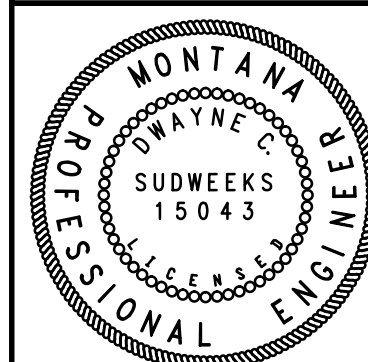


**F TANKLESS GAS WATER HEATER DETAIL**  
SCALE: NONE



**G FONT VALVE BOX DETAIL**  
SCALE: NONE

ORIGINAL DRAWING SIGNED BY: DWAYNE C. SUDWEEKS  
DATE ORIGINAL SIGNED: Sep 01, 2016  
ORIGINAL ON FILE AT ENGINEERED SYSTEMS ASSOCIATES  
1355 EAST CENTER, POCA TELLO, IDAHO 83201



**Engineered Systems Associates**  
1355 EAST CENTER  
POCA TELLO, IDAHO 83201  
PHONE: (208) 233-0501  
FAX: (208) 233-0529  
EMAIL: esa@engsystems.com  
ESA JOB NUMBER: 15001

Architect / Engineer:  
**nbwarchitects p.a.**  
ARCHITECTURE / PLANNING / INTERIORS  
SCOTT L. NELSON, AIA, KEVIN R. BOOBY, AIA, JAMES H. WYATT, AIA  
900 JOHN BOHNS PARKWAY, P.O. BOX 2217 - IDAHO FALLS, IDAHO 83402-2217  
(208) 222-8719 (T) 208-322-8783 (M) www.nbwarchitects.com

Stamp:

Billings Sweet Grass Creek  
Heritage 98  
Billings Montana Stake  
2620 54th Street W.  
Billings Montana 59106

Project for:  
**THE CHURCH OF JESUS CHRIST OF LATTER-DAY SAINTS**

Rev	Date	Description
1		
2		
3		
4		
5		
6		
7		
8		
9		
10		

Project Number:  
**15047**  
Plan Series:  
**HER-TRA-98-20**  
Property Number:  
**501-1850**

Sheet Title:  
**PLUMBING DETAILS**

Sheet:  
**P502**