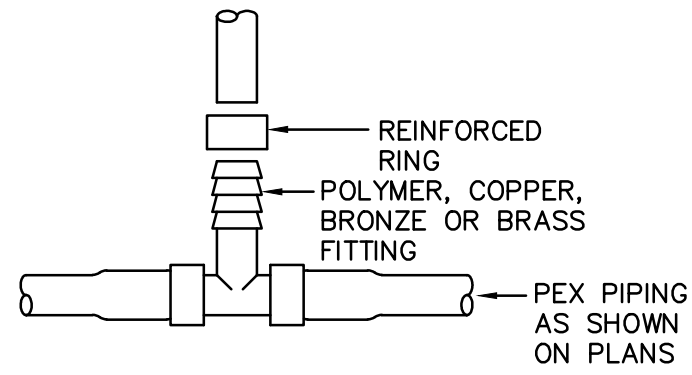


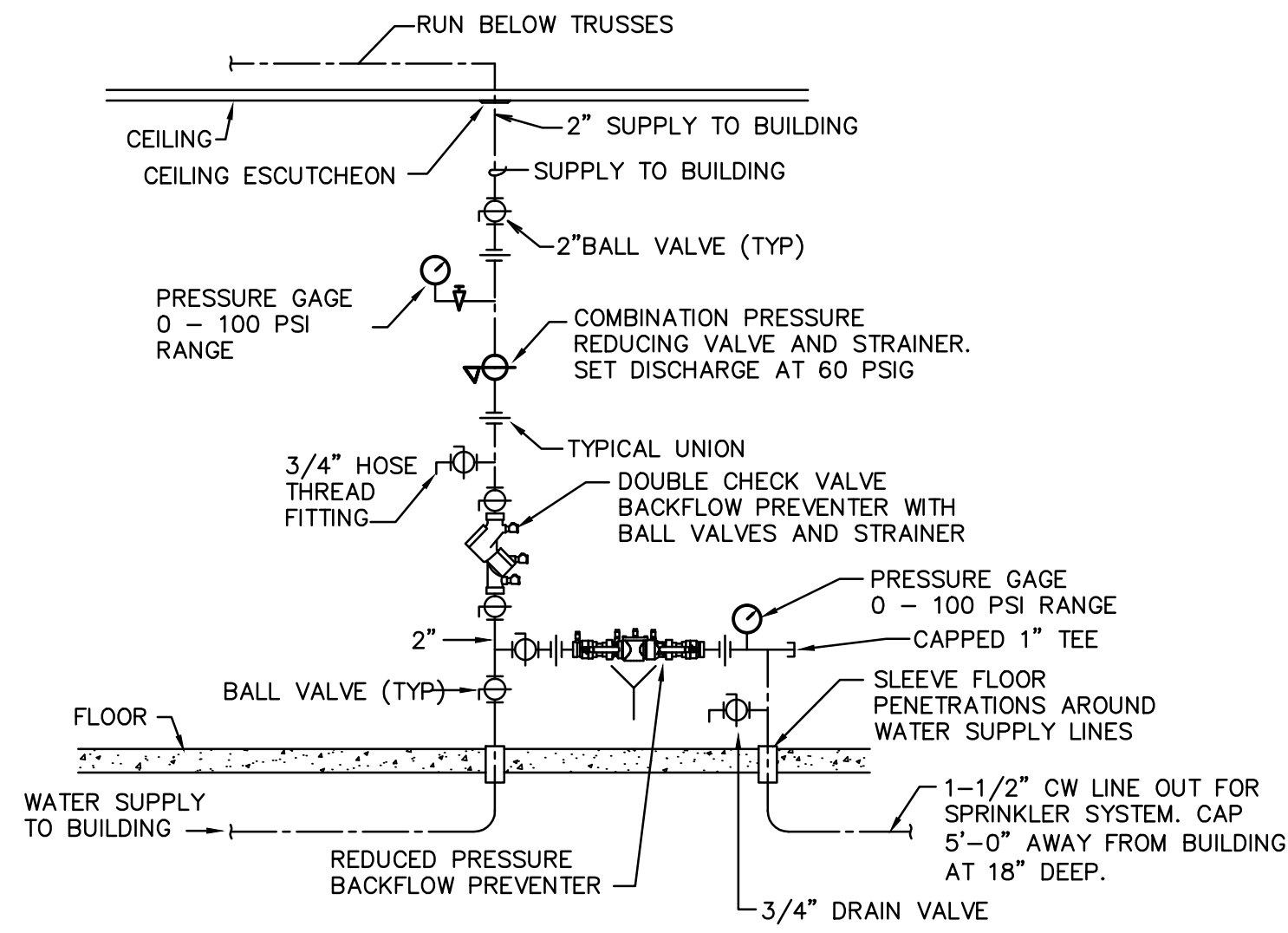
THIS TYPE (COLD EXPANSION) OF FITTING REQUIRES THAT THE PEX PIPING, WITH REINFORCING PEX RING PLACED OVER THE END OF THE END OF THE PIPE, IS EXPANDED BEFORE THE FITTING IS INSERTED INTO THE PIPE END. THE EXPANDED PIPE END IS ALLOWED TO RETRACT ONTO THE FITTING TO FORM THE SEAL. THE MEMORY OF THE PIPE ALLOWS IT TO TIGHTEN OVER THE FITTING. AN EXPANDER TOOL IS REQUIRED TO EXPAND THE PIPE AND THE PEX RING TOGETHER.

ALL JOINTS (TEES, ELBOWS, COUPLINGS, ETC.) ARE JOINTED SIMILARLY.

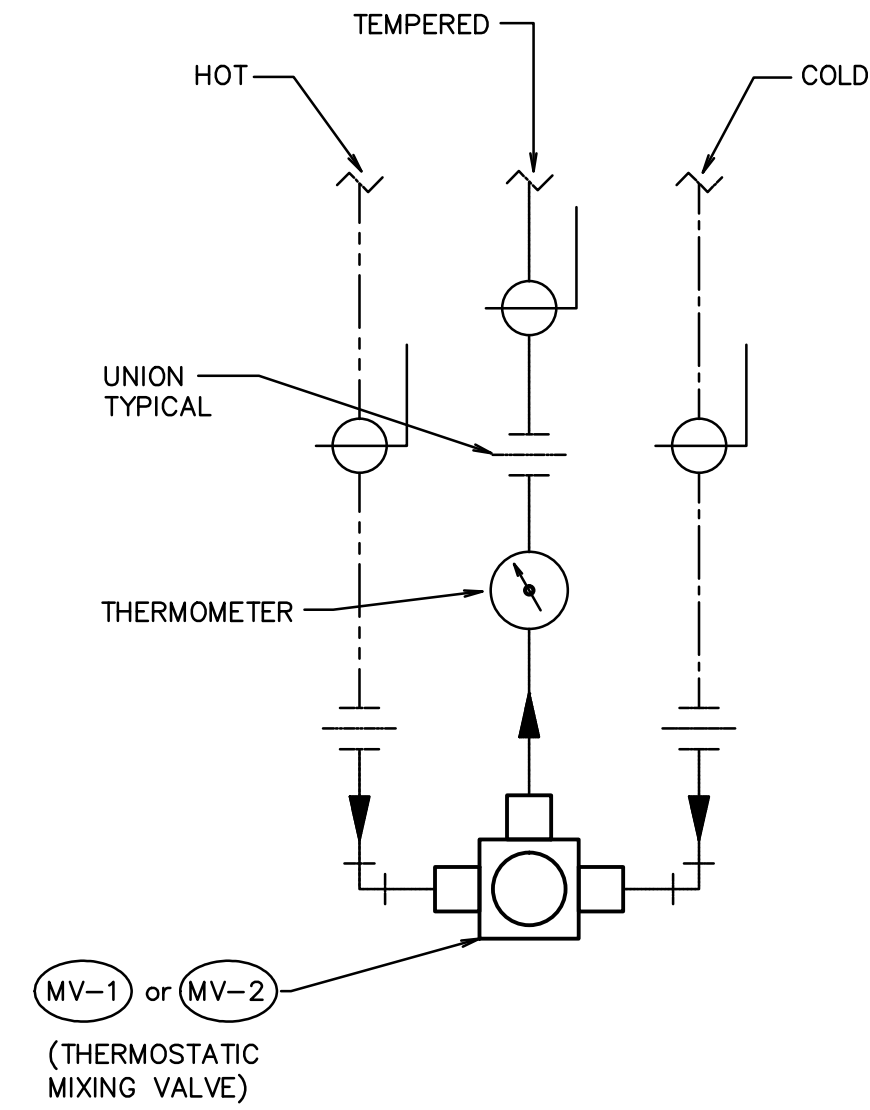


NOTE: STAINLESS STEEL CAMP BANDS ARE ALSO PERMITTED FOR REINFORCING RING.

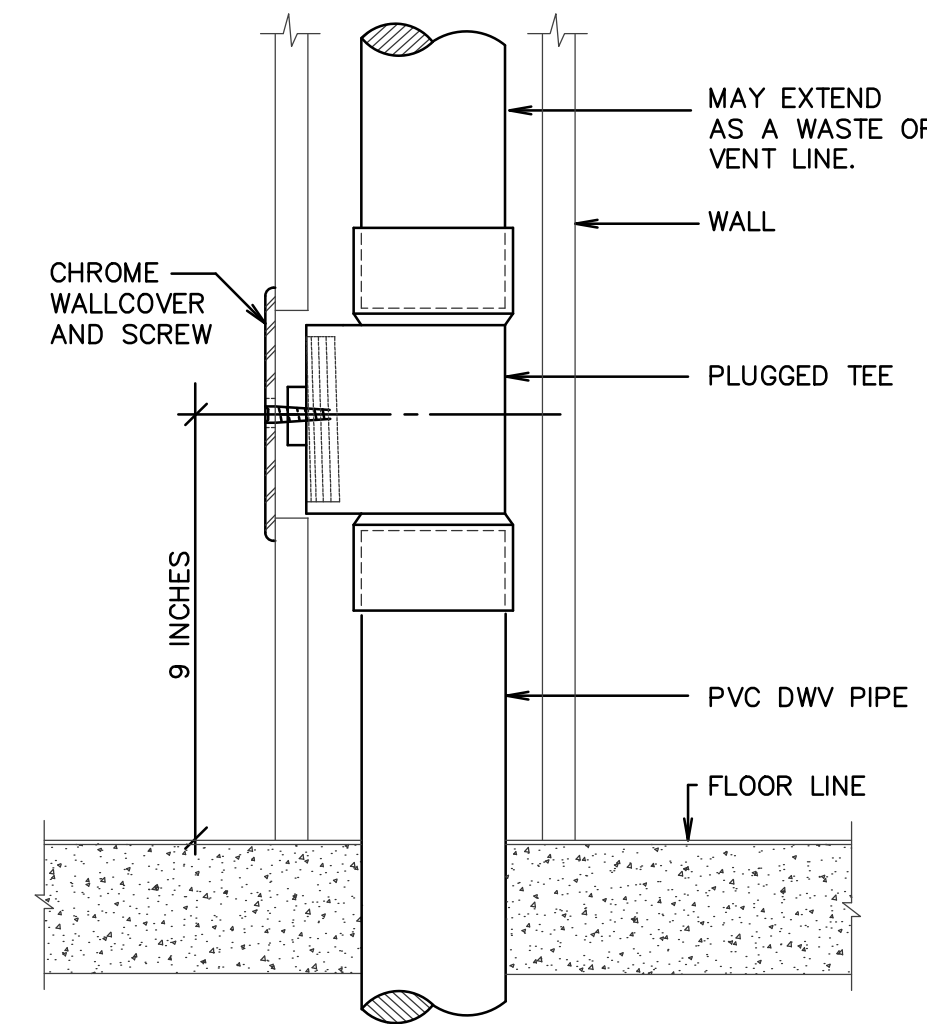
**A** PEX PIPE FITTING DETAIL  
SCALE: NONE



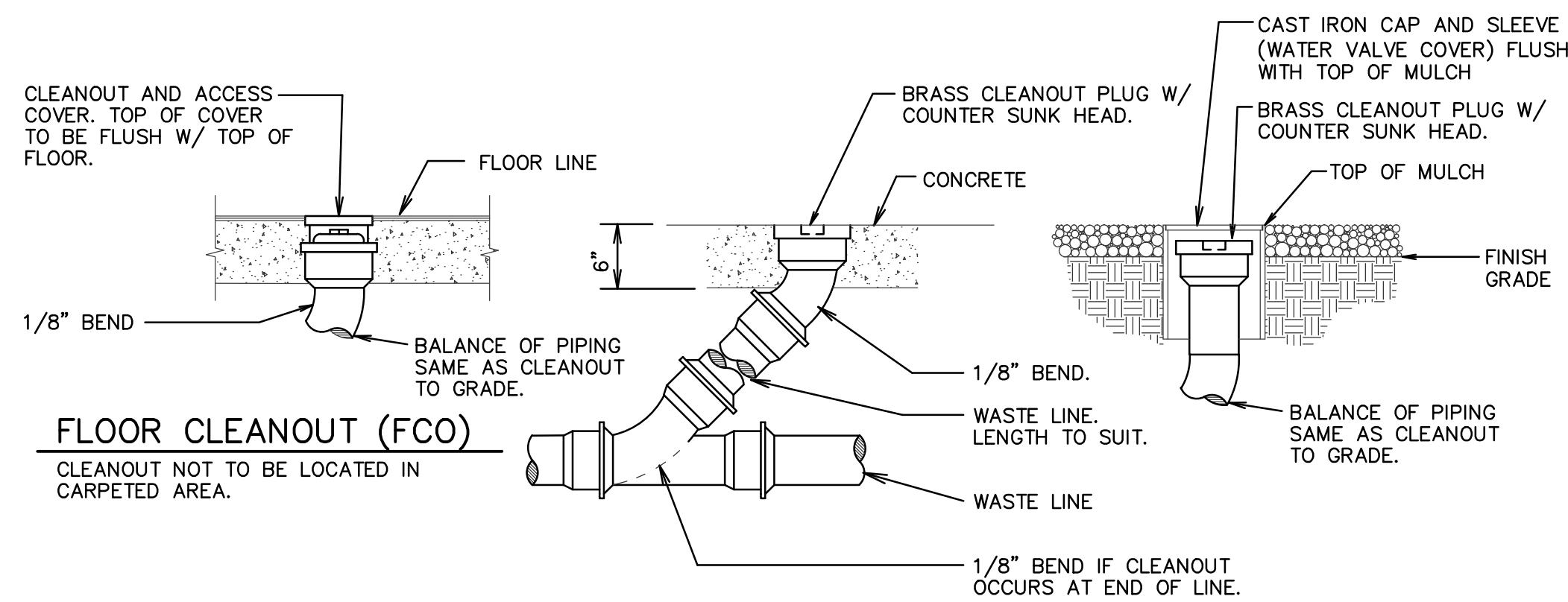
**B** VERTICAL WATER PRESSURE REDUCING STATION DETAIL  
SCALE: NONE



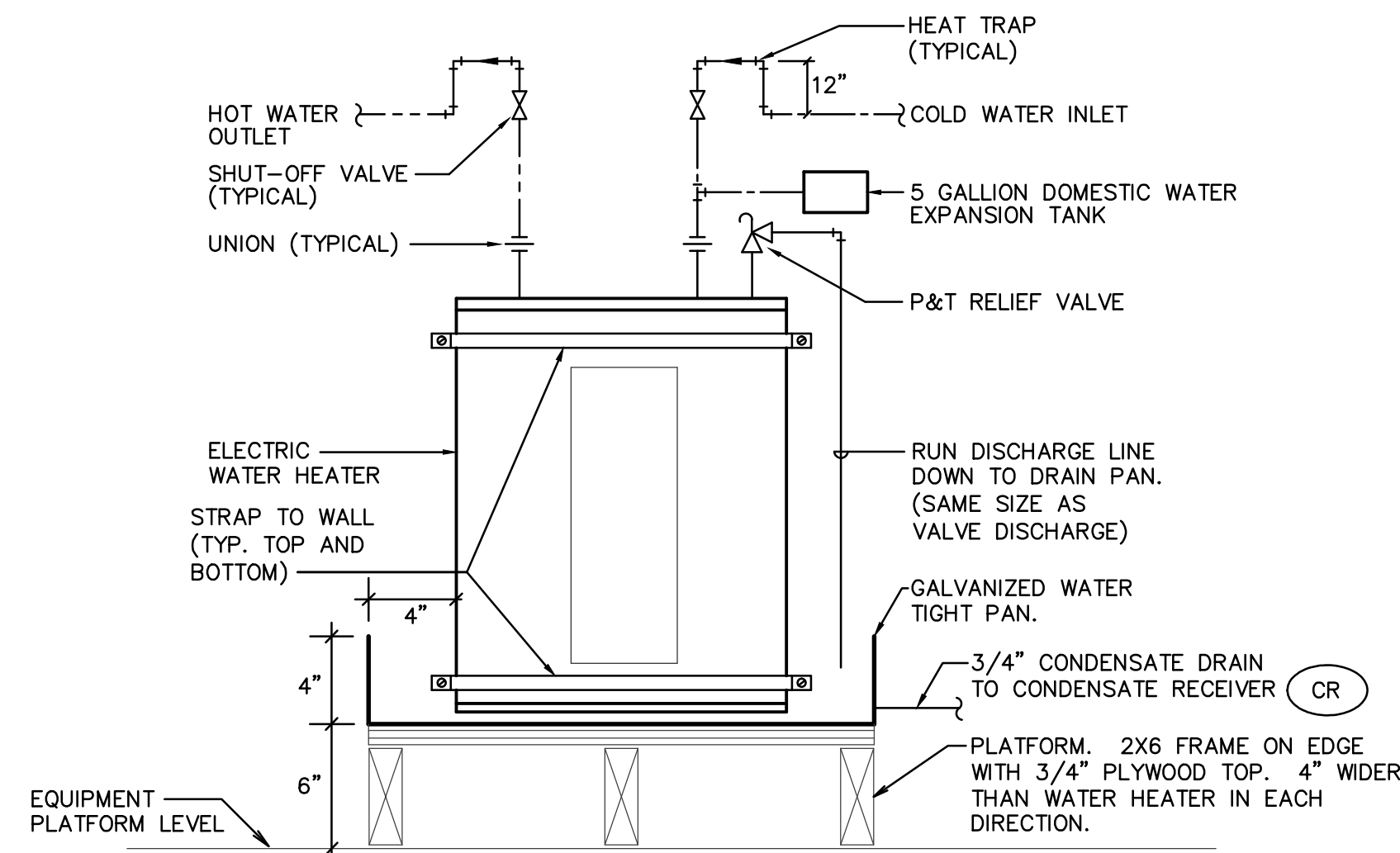
**C** MIXING VALVE PIPING SCHEME  
SCALE: NONE



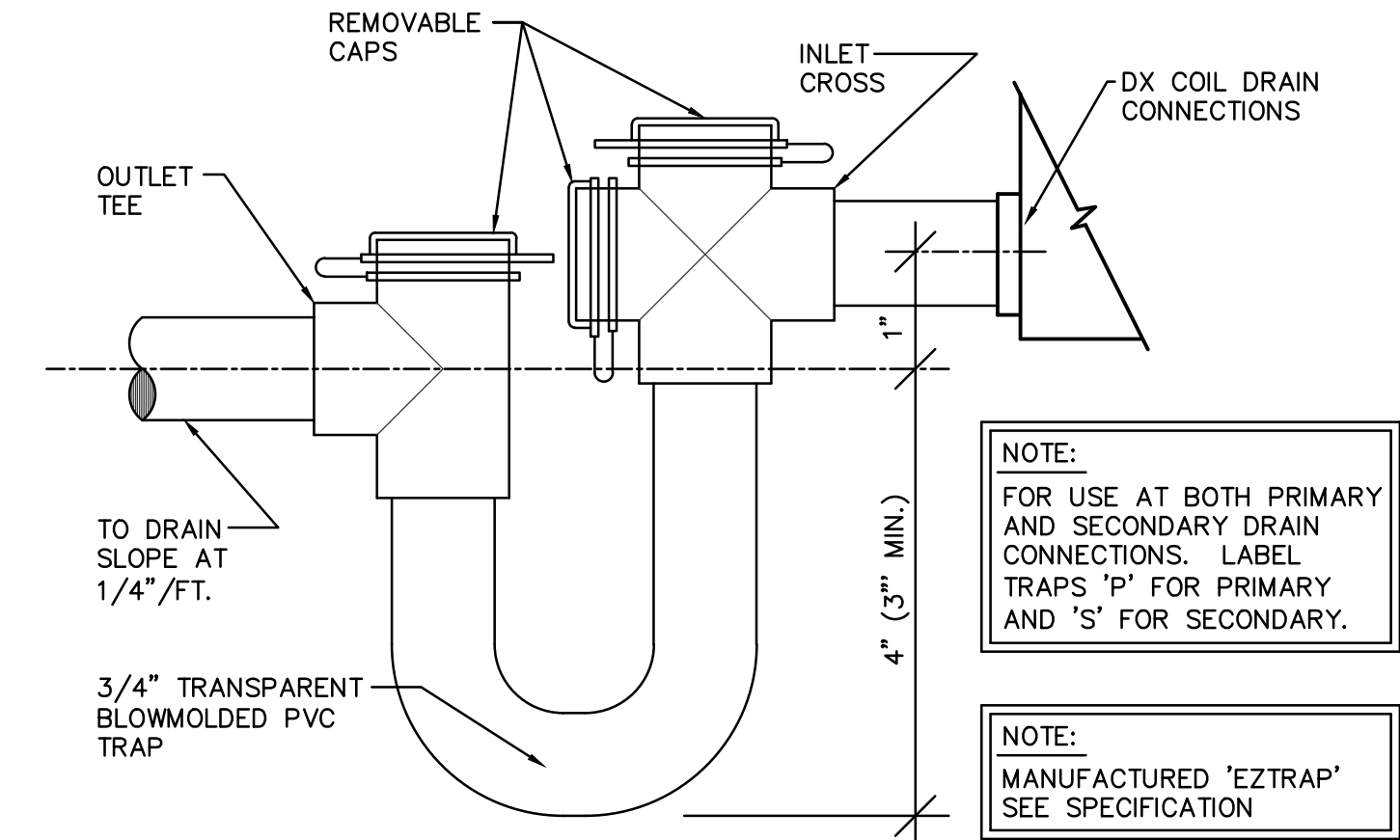
**D** WALL CLEANOUT DETAIL  
SCALE: NONE



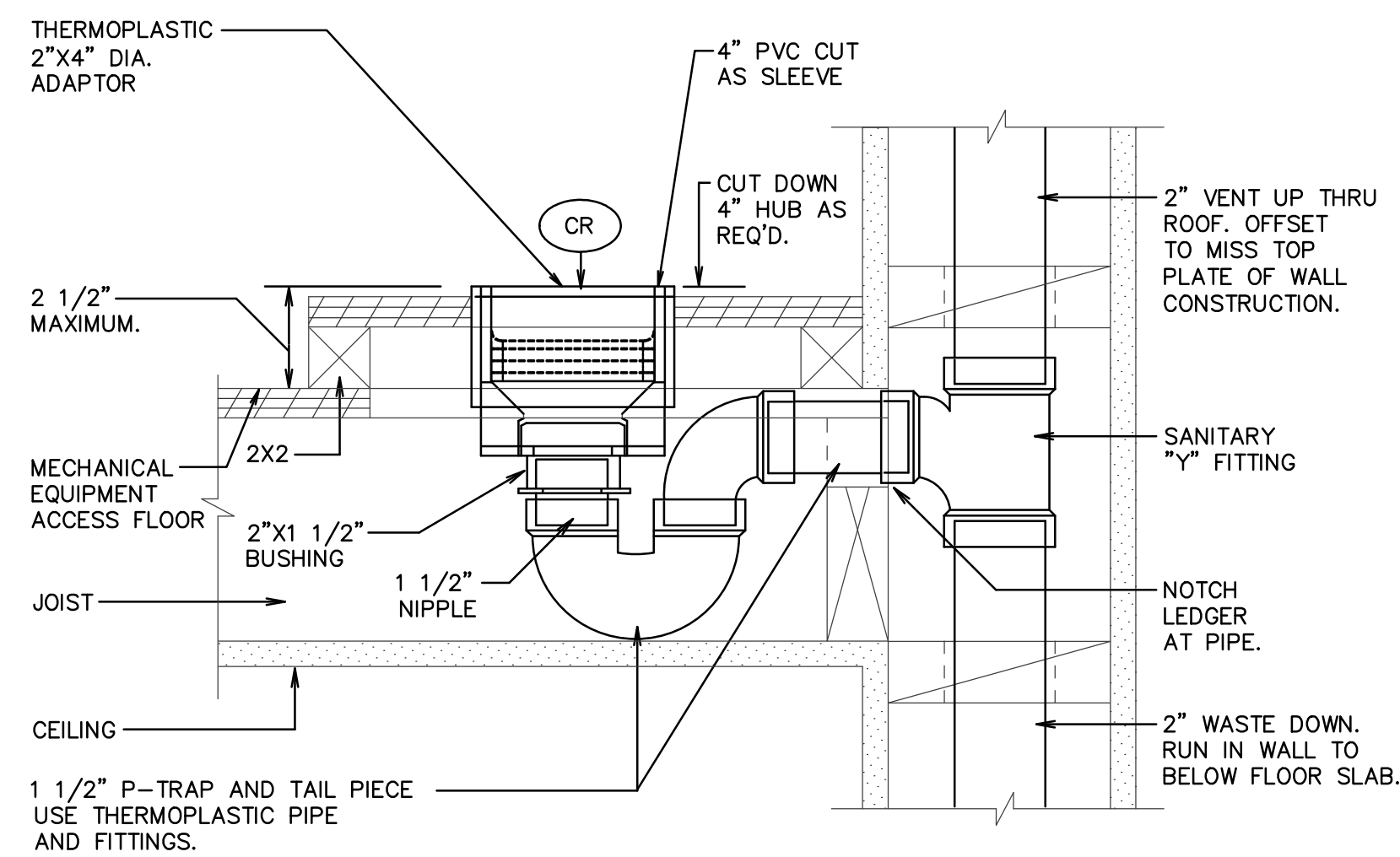
**E** CLEANOUT DETAILS  
SCALE: NONE



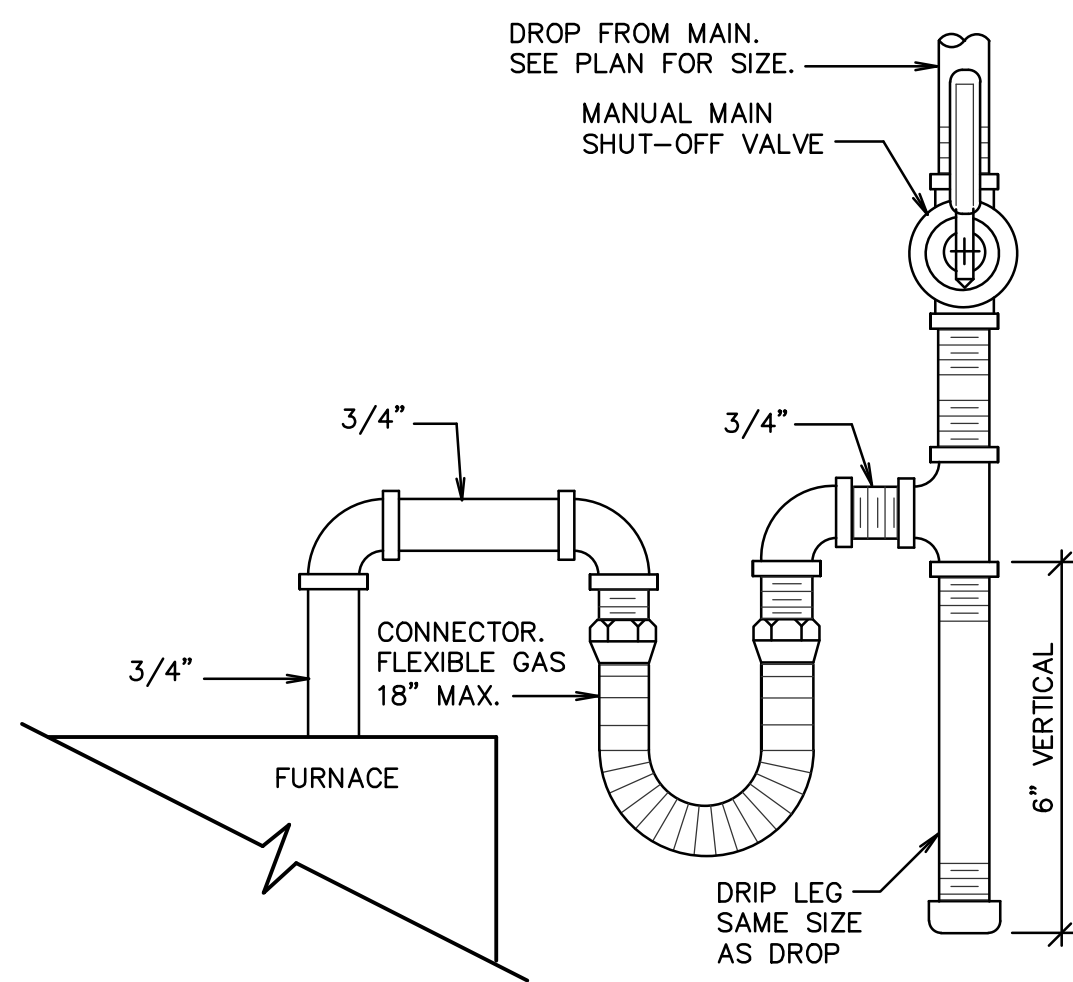
**F** FLOOR MOUNTED ELECTRIC WATER HEATER DETAIL  
SCALE: NONE



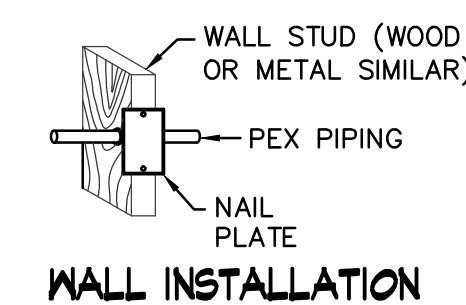
**G** DX COIL CONDENSATE DRAIN DETAIL  
SCALE: NONE



**H** CONDENSATE RECEIVER DETAIL  
SCALE: NONE



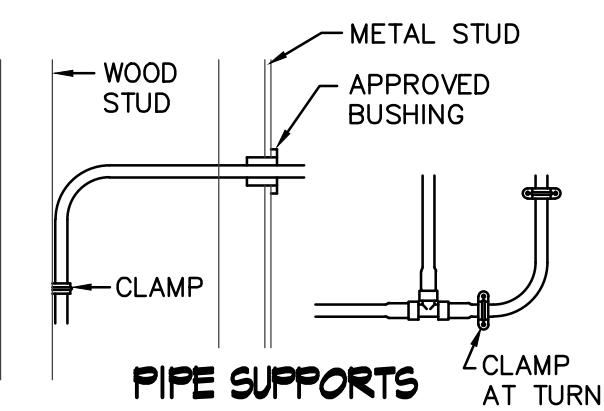
**J** GAS LINE CONNECTION DETAIL  
SCALE: NONE



PIPE SUPPORTS: PLASTIC HANGERS AND STRAPS ARE RECOMMENDED, BUT METAL SUPPORTS WHICH ARE DESIGNED FOR USE WITH PLASTIC TUBING CAN BE USED. DO NOT USE SUPPORTS THAT PINCH OR CUT THE TUBING. SUPPORT SHOULD ALLOW FREE TUBING MOVEMENT. INSPECT ALL SUPPORTS PRIOR TO INSTALLATION TO ENSURE THAT SHARP EDGES DO NOT EXIST THAT CAN DAMAGE THE TUBING.

DO NOT USE IN ANY APPLICATION WHERE TUBING WILL BE EXPOSED TO DIRECT SUNLIGHT.

VERTICAL TUBING TO BE SUPPORTED EVERY 8'-0" WHEN PENETRATING METAL STUDS, UTILIZE A BUSHING DESIGNED FOR PLASTIC TUBING. SUPPORTS SHALL BE INSTALLED AT CHANGES IN DIRECTION TO RELIEVE STRESS AS SHOWN.



**K** PEX PIPE INSTALLATION DETAILS  
SCALE: NONE

Architect / Engineer:  
**nbwarchitects p.a.**  
ARCHITECTURAL PLANNING / INTERIORS  
SCOTT NELSON AIA, KEVIN R. BOHLY AIA, JAMES H. WYATT AIA  
901 JOHN JORDAN PARKWAY P.O. BOX 2217 - 10000 FALLS, IDAHO 83402-2212  
(208) 322-8719 (T) 208-322-8763 (F) www.nbwarchitects.com

Stamp:

Billings Sweet Grass Creek  
Heritage 98  
Billings Montana Stake  
2620 54th Street W.  
Billings Montana 59106

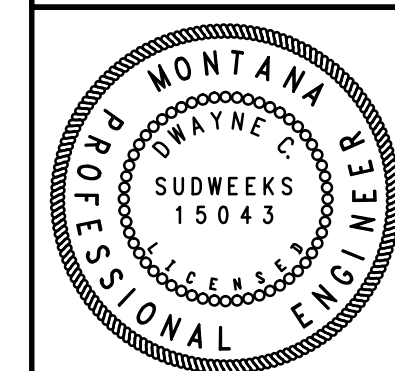
Project for:  
**THE CHURCH OF JESUS CHRIST OF LATTER-DAY SAINTS**

| Rev. | Date | By | Description |
|------|------|----|-------------|
| 1    |      |    |             |
| 2    |      |    |             |
| 3    |      |    |             |
| 4    |      |    |             |
| 5    |      |    |             |
| 6    |      |    |             |
| 7    |      |    |             |
| 8    |      |    |             |
| 9    |      |    |             |
| 10   |      |    |             |

Project Number:  
15047  
Plan Series:  
HER-TRA-98-20  
Property Number:  
501-1850

Sheet Title:  
**PLUMBING DETAILS**

ORIGINAL DRAWING SIGNED BY: DWAYNE C. SUDWECKS  
DATE ORIGINAL SIGNED: Sep 07, 2016  
ORIGINAL ON FILE AT ENGINEERED SYSTEMS ASSOCIATES  
1355 EAST CENTER, POCAHELLO, IDAHO 83201



**Engineered Systems Associates**  
1355 EAST CENTER  
POCAHELLO, IDAHO 83201  
PHONE: (208) 233-0501  
FAX: (208) 233-0529  
EMAIL: esa@engsystems.com  
ESA JOB NUMBER: 15001

Sheet:

**P501**