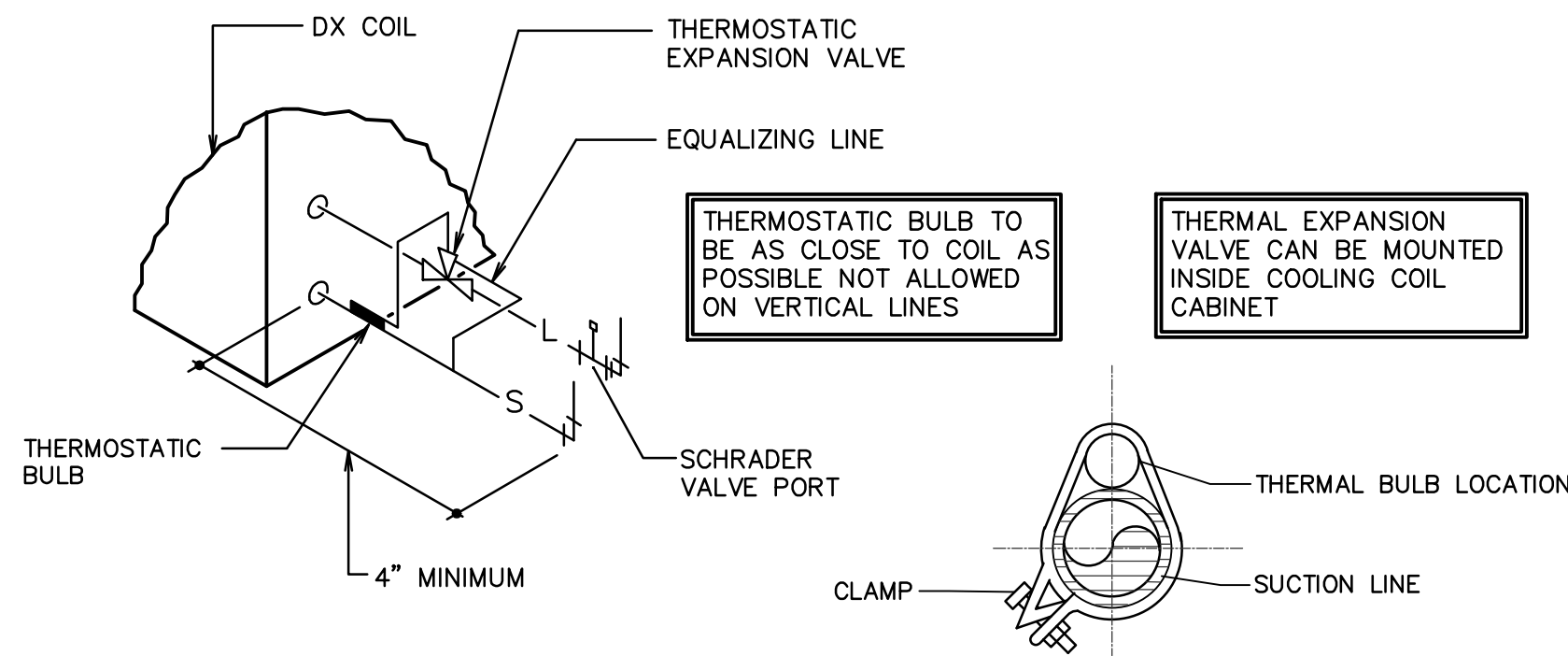
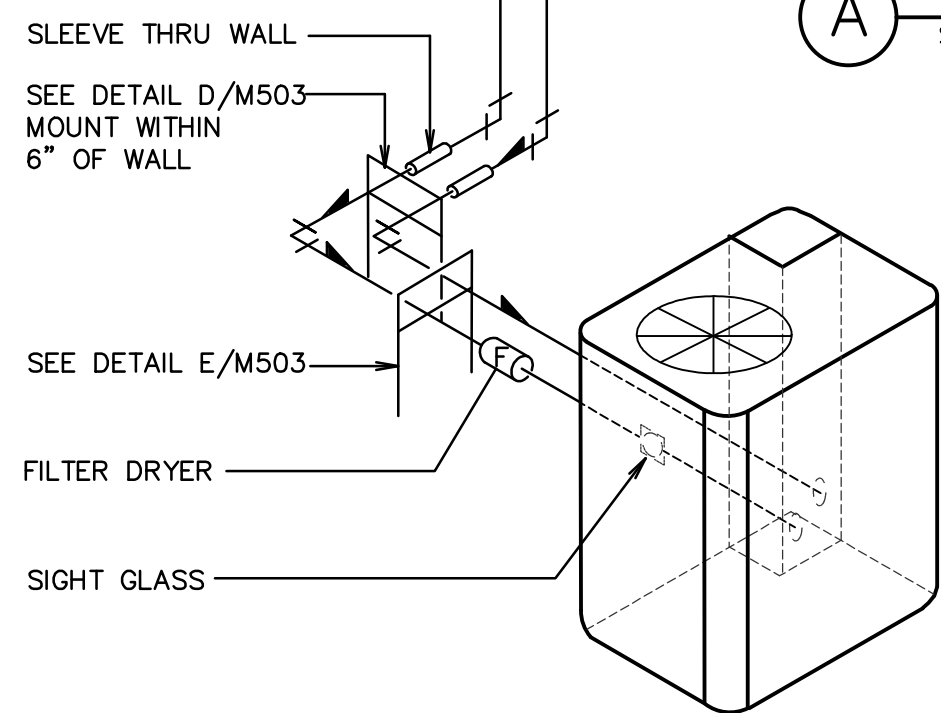


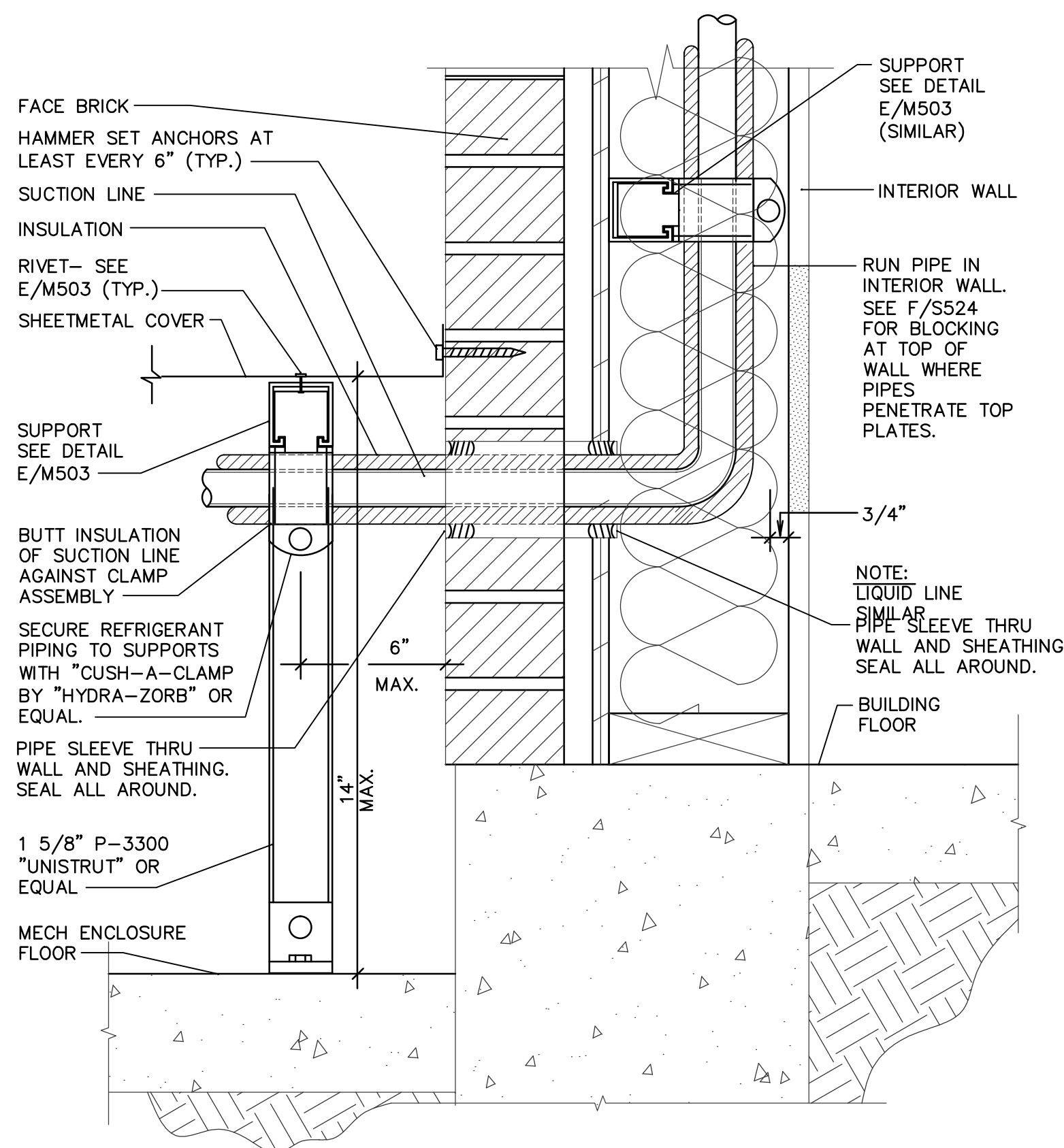
**A** TYPICAL REFRIGERANT SCHEME  
SCALE: NONE



**B** REFRIGERANT COIL CONNECTION DETAIL  
SCALE: NONE



**C** SUSPENDED REFRIGERANT PIPE SUPPORT AT CEILING  
SCALE: NONE

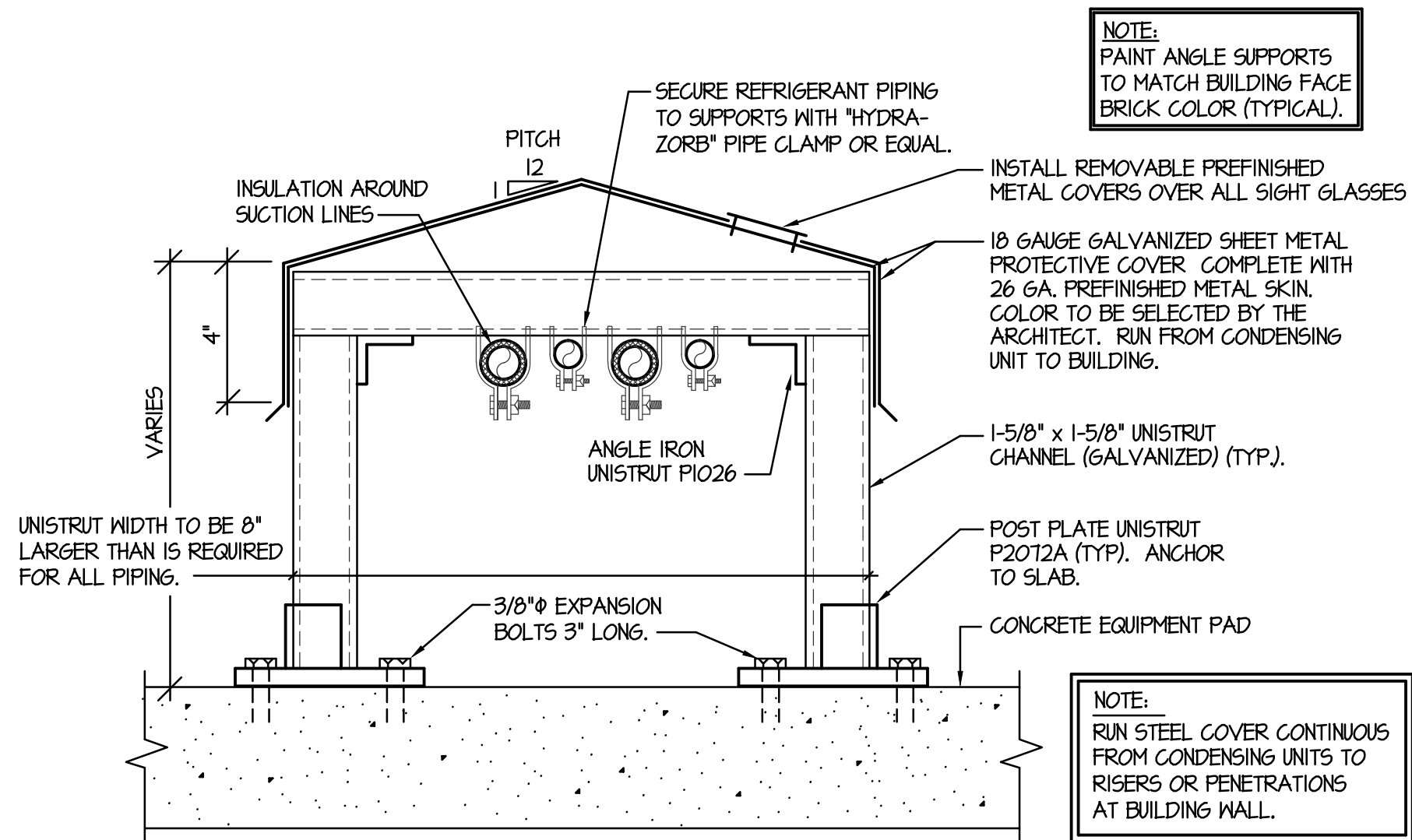


**D** REFRIGERANT PIPE SUPPORT AT WALL  
SCALE: NONE

REFRIGERANT PIPING LEGEND	
SYMBOL	DESCRIPTION
	EXPANSION VALVE
	MOISTURE INDICATING SIGHT GLASS
	FILTER DRIER
	PIPE SUPPORT. SEE DETAILS C/M503 AND F/M501
	EXTERIOR PIPE SUPPORT. SEE DETAIL E/M503
	DIRECTION OF SLOPE DOWN
	SUCTION LINE
	LIQUID LINE
	SCHRADER VALVE PORT

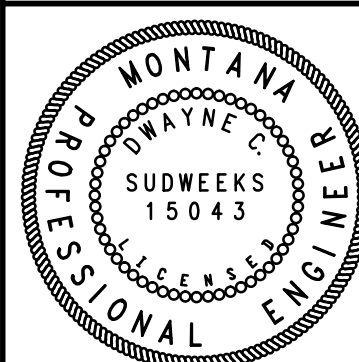
REFRIGERANT LINE SIZES		
SYSTEM SIZE	LIQUID	SUCTION
2.0 TON	3/8"	3/4"
2.5 TON	3/8"	3/4"
3.0 TON	3/8"	7/8"
3.5 TON	3/8"	7/8"
4.0 TON	3/8"	7/8"
5.0 TON	3/8"	1 1/8"

\* BASED ON 410g REFRIGERANT REFER TO COMPRESSOR UNIT SCHEDULE, SHEET M601, FOR SYSTEM SIZES.



**E** EXTERIOR REFRIGERANT PIPE SUPPORT DETAIL  
SCALE: NONE

ORIGINAL DRAWING SIGNED BY: DWAYNE C. SUDWEEKS  
DATE ORIGINAL SIGNED: Sep 01, 2016  
ORIGINAL ON FILE AT ENGINEERED SYSTEMS ASSOCIATES  
1355 EAST CENTER, POCA TELLO, IDAHO 83201



**Engineered Systems Associates**  
1355 EAST CENTER  
POCA TELLO, IDAHO 83201  
PHONE: (208) 233-0501  
FAX: (208) 233-0529  
EMAIL: esa@engsystems.com  
ESA JOB NUMBER: 15001

Architect / Engineer:  
**nbwarchitects p.a.**  
ARCHITECTURE / PLANNING / INTERIORS  
SCOTT NELSON AIA, KEVIN R. BOOBY AIA, JAMES H. WYATT AIA,  
990 JOHN BOHNS PARKWAY P.O. BOX 2217 - IDAHO FALLS, IDAHO 83402-2212  
(208) 322-8775 (208) 322-8785 (208) 322-8786  
www.nbwarchitects.com

Stamp:

Billings Sweet Grass Creek  
Heritage 98  
Billings Montana Stake  
2620 54th Street W.  
Billings Montana 59106

Project for:  
**THE CHURCH OF JESUS CHRIST OF LATTER-DAY SAINTS**

Mark	Date (m.d.y)	Description

Project Number: 15047  
Plan Series: HER-TRA-98-20  
Property Number: 501-1850

Sheet Title:  
**REFRIGERANT DETAILS AND ISOMETRIC**

Sheet:  
**M503**