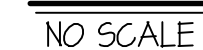
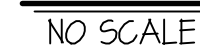


NOTES:

- 1 - ALL WATER PIPING INSTALLED UNDERFLOOR SHALL BE TYPE "K" COPPER
- 2 - WATER PIPE INSULATION ON UNDERFLOOR PIPING SHALL BE ARMAFLEX 3/4" THICK RUBBER PIPE INSULATION. TAPE INSULATION AT ALL SEAMS.
- 3 - MINIMUM PIPE SIZE UNDERFLOOR SHALL BE 3/4"
- 4 - SAND FILL AROUND PIPING SHALL BE A MINIMUM OF 4" THICK. MATERIAL SHALL BE HAND TAMPED, RODDED OR LIGHTLY COMPACTED DURING INSTALLATION. CARE SHOULD BE TAKEN NOT TO DEFORM OR OTHERWISE DAMAGE PIPING OR INSULATION.



- 1 NEW GAS METER BY LOCAL GAS COMPANY SIZED FOR 150,000 BTU AT OZ. DELIVERY PRESSURE.
- 2 RISE 3/4" GAS LINE UP IN STUD SPACE OF EXTERIOR WALL TO ATTIC SPACE. RUN ACROSS IN ATTIC AND DROP DOWN TO SERVE FURNACE. CONNECT TO FURNACE WITH FLEXIBLE CONNECTION COMPLETE W/ SHUT-OFF VALVE AND DIRT LEG. SEE DETAIL ON THIS SHEET.
- 3 SEE CIVIL SITE PLAN FOR CONTINUATION OF 4" WASTE MAIN CONNECTING TO EXISTING SEPTIC SYSTEM.
- 4 SEE CIVIL SITE PLAN FOR CONTINUATION OF 3/4" DOMESTIC WATER LINE CONNECTING TO EXISTING BUILDING HOUSING EXISTING WELL PRESSURE TANKS.
- 5 RISE 3/4" CW MAIN UP THRU SLAB INTO MECH ROOM. INSTALL SHUT-OFF VALVE ABOVE GRADE INSIDE ROOM.
- 6 RUN 3/4" AS HIGH AS POSSIBLE EXPOSED ON CEILING OF MECHANICAL ROOM.
- 7 DROP 3/4" CW AND 3/4" HW DOWN IN WALL AND RUN UNDER SLAB TO SERVE FIXTURES. ALL WATER PIPING LOCATED UNDER SLAB TO BE INSULATED WITH 3/4" ARMAFLEX PIPE INSULATION. SEE DETAIL ON THIS SHEET.
- 8 INSTALL WATER HEATER ON ANGLE IRON STAND MOUNTED TO WALL ABOVE JANITOR SINK. SEE DETAIL ON THIS SHEET.
- 9 RUN 3/4" CONDENSATE DRAIN PIPING FROM BOTH DX COOLING COIL AND FURNACE TO FLOOR DRAIN IN MECH. ROOM. SEE DETAIL ON THIS SHEET.

FIXTURE SCHEDULE

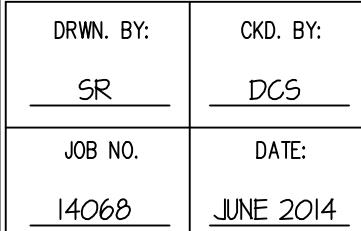
ORIGINAL DRAWING SIGNED BY: DWAYNE C. SUDWEEKS
DATE ORIGINAL SIGNED: Jun 30, 2014
ORIGINAL ON FILE AT ENGINEERED SYSTEMS ASSOCIATES
1355 EAST CENTER, POCA TELLO, IDAHO 83201



Dwayne Sudweeks – Ron Rice
1355 East Center – Pocatello, Idaho 83201
Phone: (208) 233-0501 Fax: (208) 233-0529 email: esa@engsystems.com

**A NEW OFFICE BUILDING FOR:
EAGLE ROCK FABRICATION
IDAHO FALLS, IDAHO**

PLUMBING FLOOR PLANS, SCHEDULE & DETAILS



SHEET: **P-1**

OF: **ONE**