

SPECIAL NOTE:

ALL SUPPLY AND RETURN DUCTWORK SHOWN OUTSIDE OF MECHANICAL ROOM TO BE RUN IN THE COLD ATTIC SPACE. CONTRACTOR TO WRAP ALL DUCTWORK IN COLD ATTIC SPACE WITH 1-1/2" THERMAL DUCTWRAP.

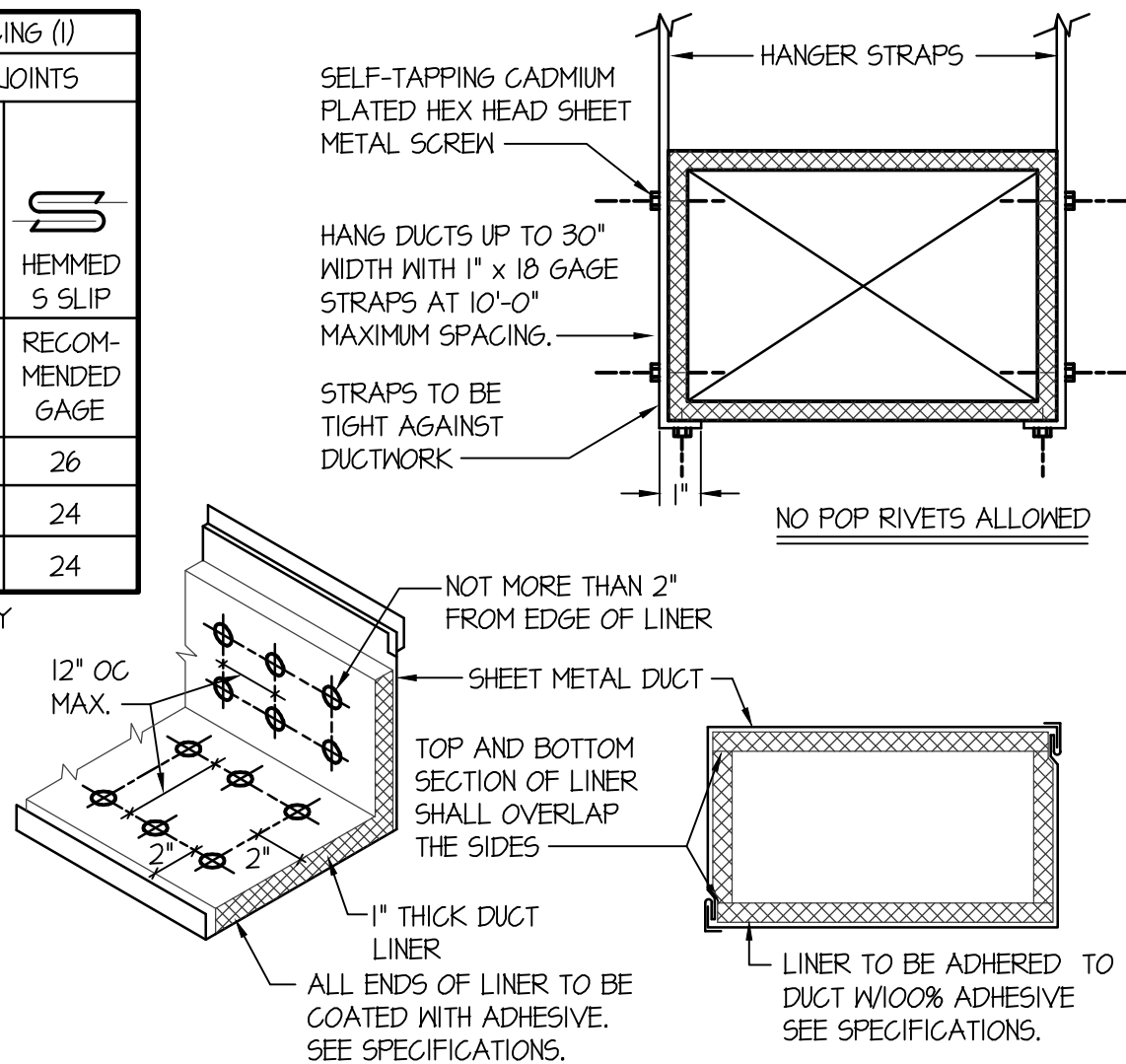
DIMENSION OF LONGEST SIDE, INCHES	SHEET METAL GAGE (ALL FOUR SIDES)	TRANSVERSE REINFORCING (1)			
		MINIMUM REINFORCING ANGLE SIZE AND MAXIMUM LONGITUDINAL SPACING BETWEEN TRANSVERSE JOINTS 4/OR INTERMEDIATE REINFORCING	AT JOINTS		
UP THRU 12	26	NONE REQUIRED	DRIVE SLIP	HEMMED S SLIP	26
13 - 18	24	NONE REQUIRED			24
19 - 30	24	1"x1"x1/8" @ 60 IN	RECOM-MENDED GAGE	RECOM-MENDED GAGE	24

(1) TRANSVERSE REINFORCING SIZE IS DETERMINED BY DIMENSION OF SIDE TO WHICH ANGLE IS APPLIED.

METAL FASTENERS - O MARK INSULPING, DURO DYNE FASTENERS OR GRIPNAILS.

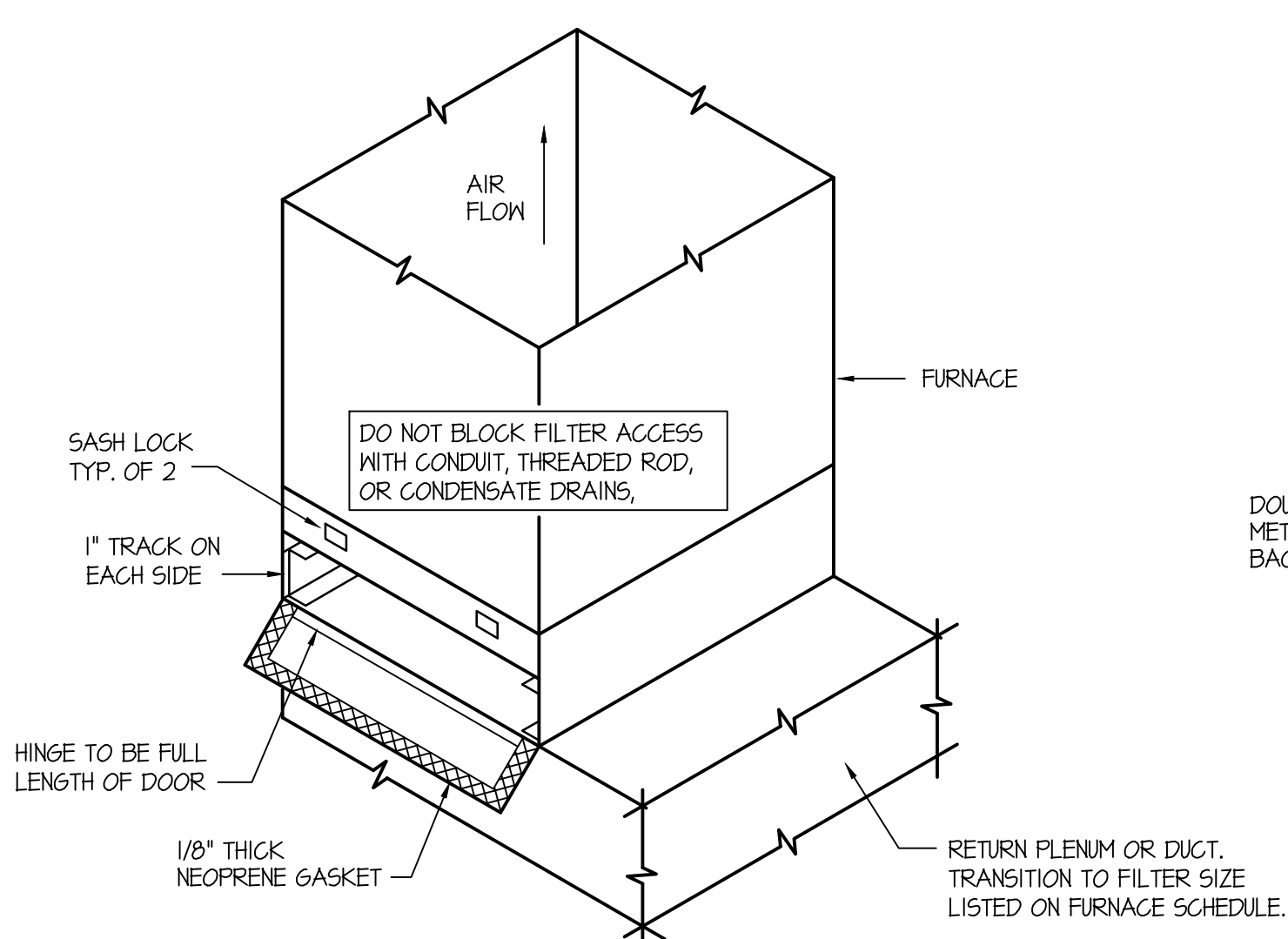
GRIP NAILS SHALL BE INSTALLED BY GRIPNAIL AIR HAMMER OR BY AUTOMATIC FASTENER EQUIP.

ENDS OF LINER SHALL BE BUTTED FIRMLY TOGETHER



DUCT CONSTRUCTION AND HANGER DETAIL

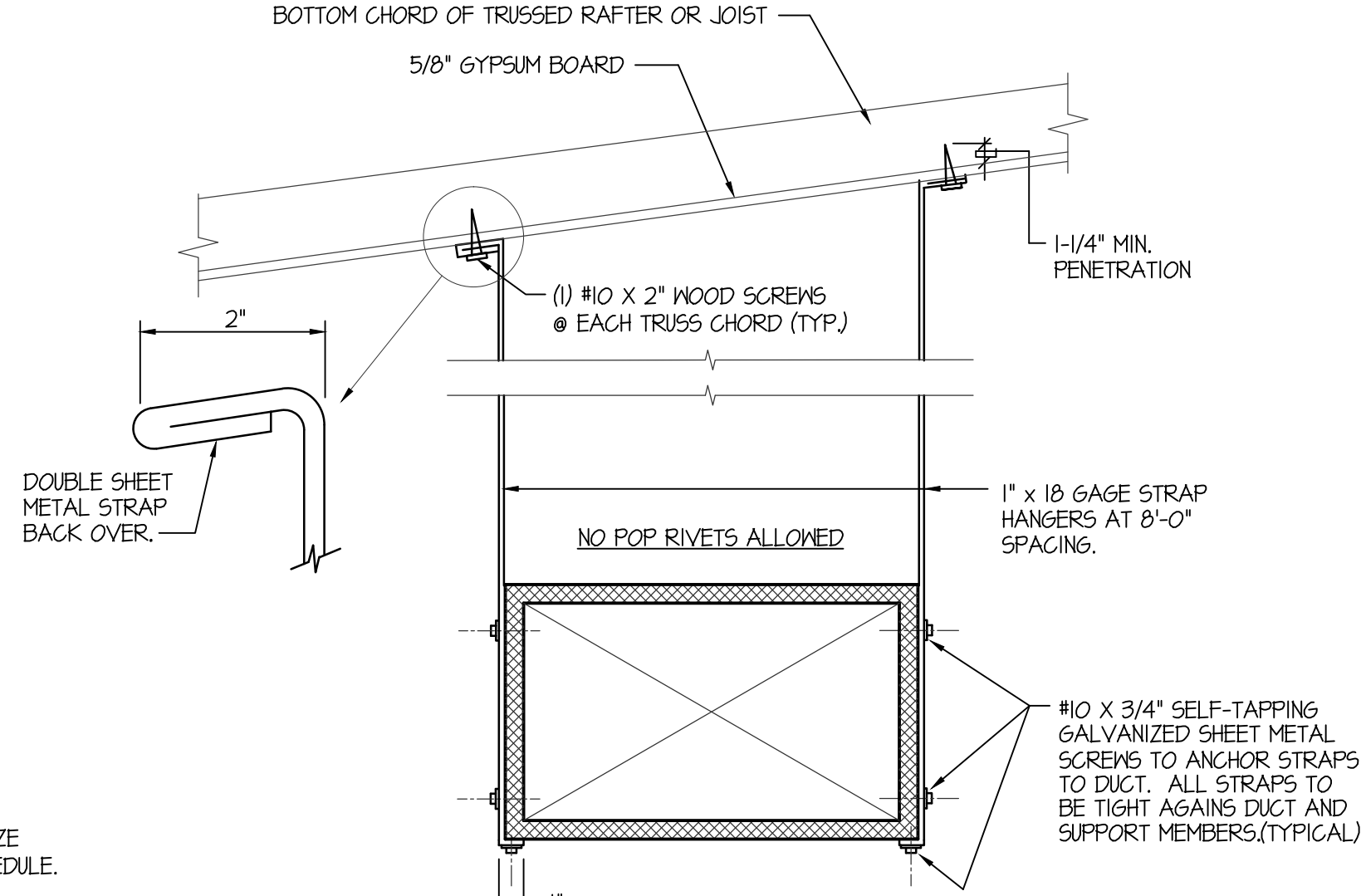
NO SCALE



EXTERNAL FILTER SECTION DETAIL

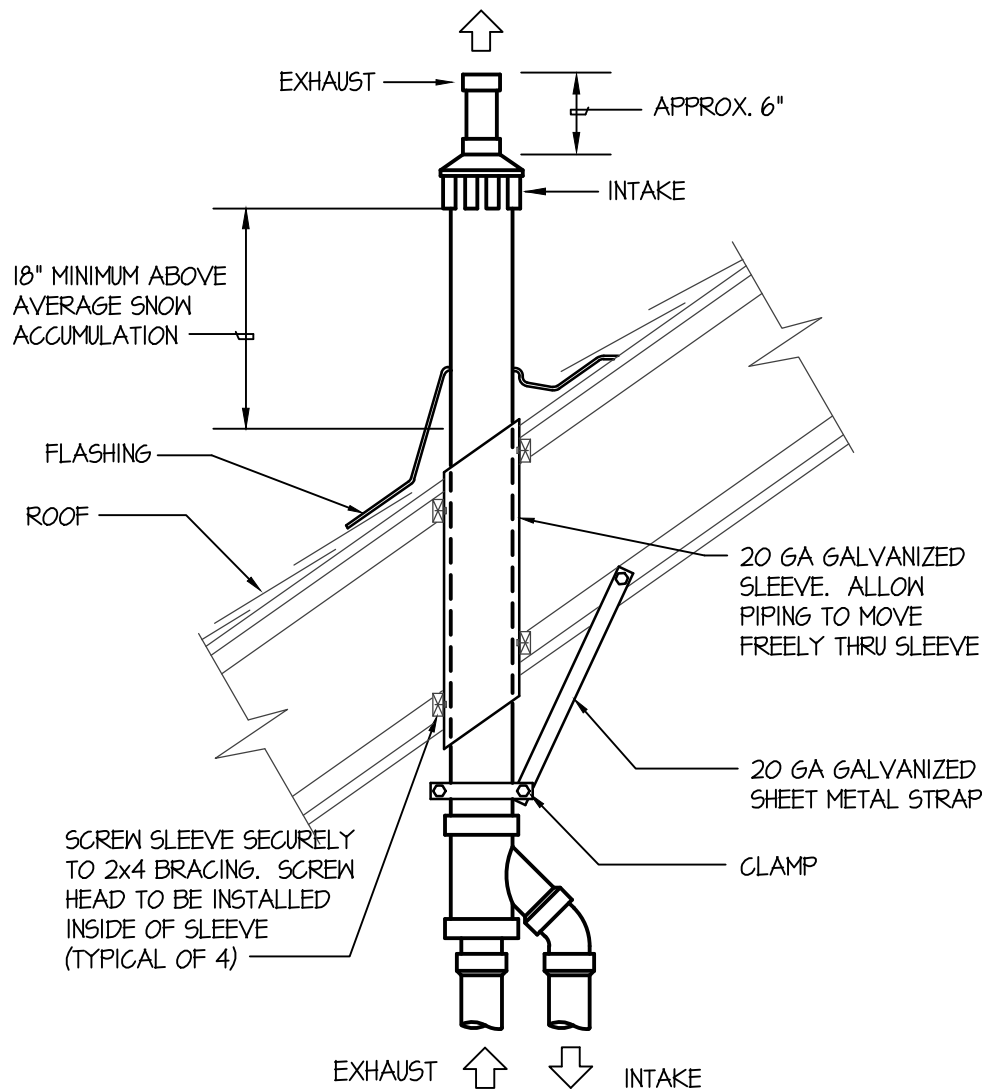
NO SCALE

UP-FLOW CONFIGURATION



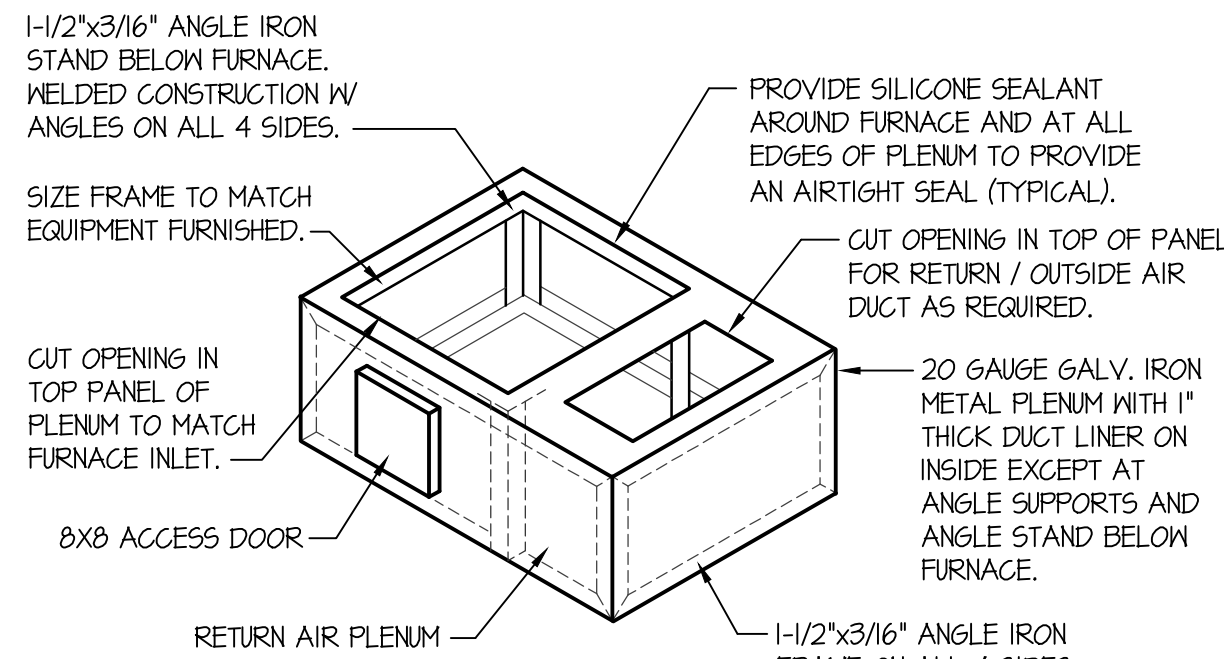
DUCT STRAP HANGER DETAIL

NO SCALE



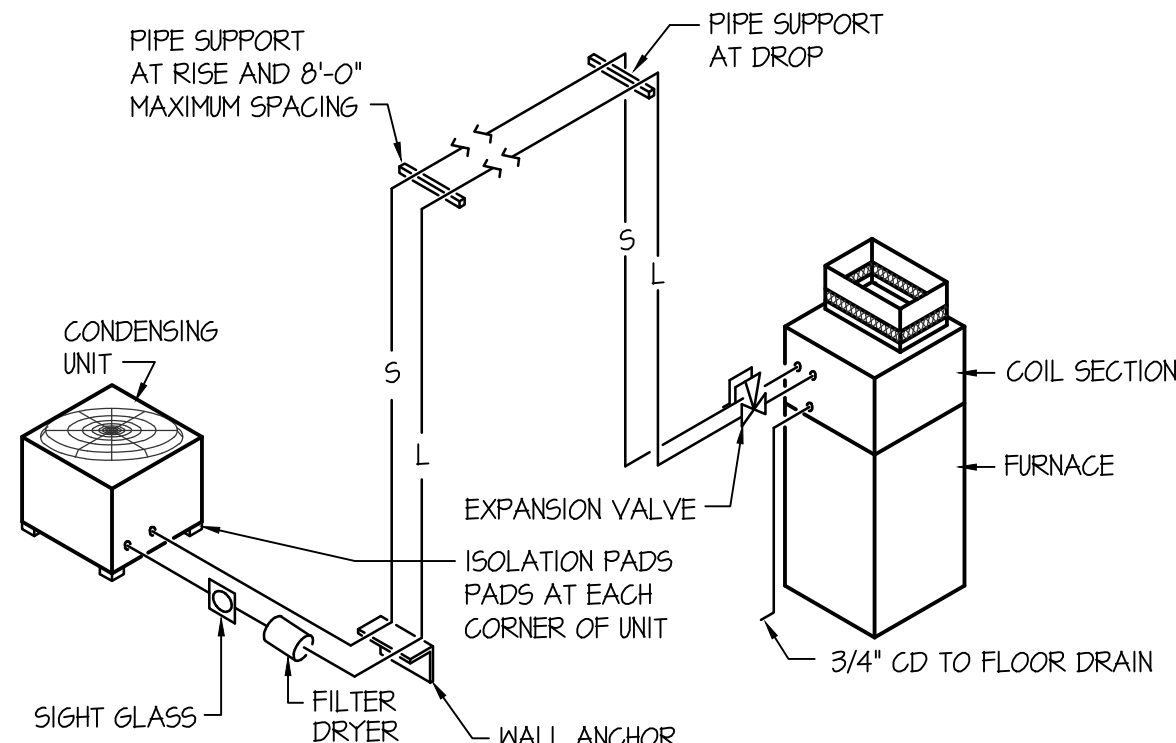
CONCENTRIC VENT TERMINATION DETAIL

NO SCALE



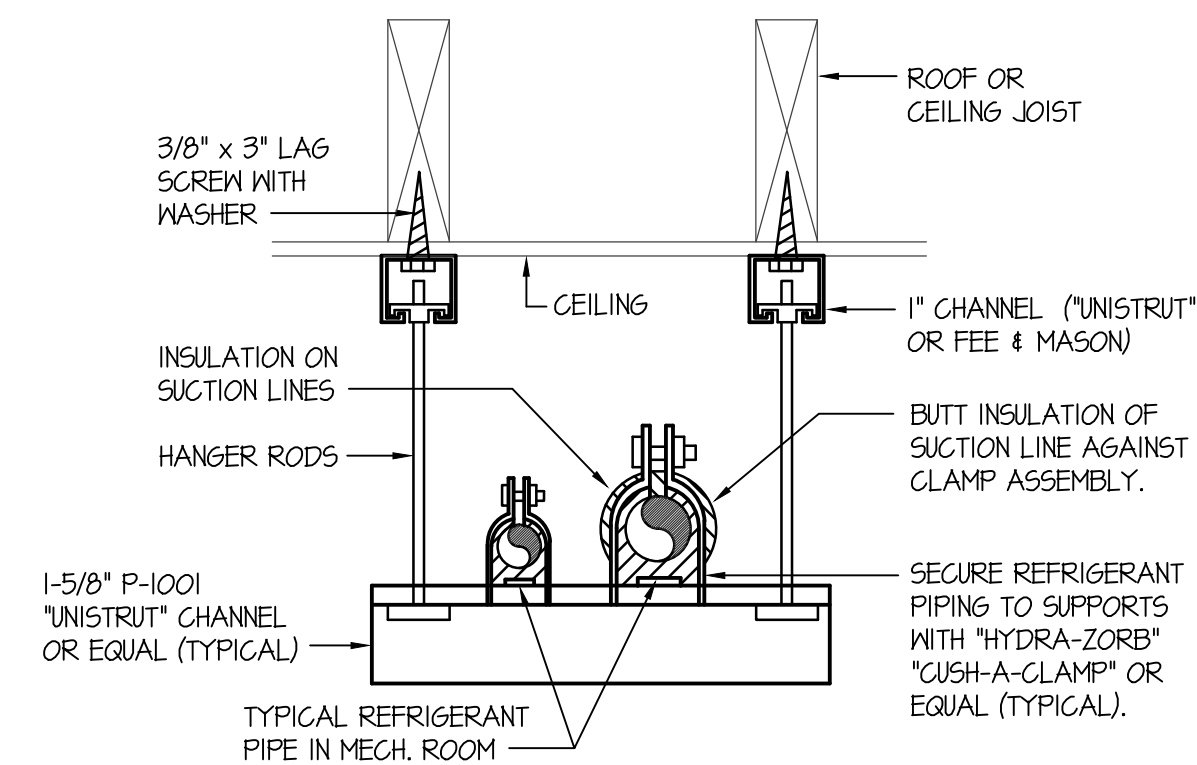
RETURN AIR PLENUM DETAIL

NO SCALE



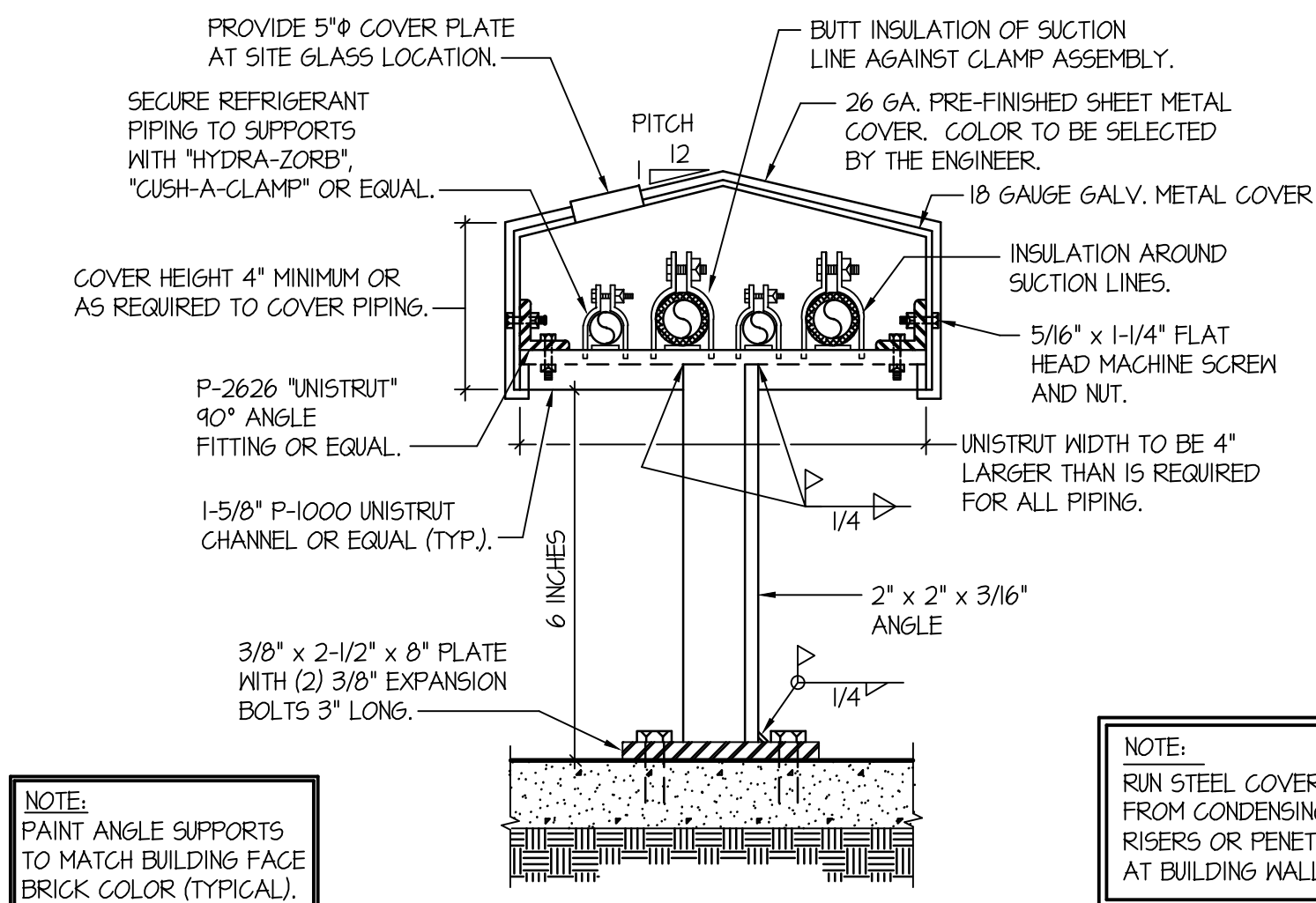
REFRIGERANT PIPING DIAGRAM

NO SCALE



SUSPENDED PIPE SUPPORT

NO SCALE



NOTE:
PAINT ANGLE SUPPORTS TO MATCH BUILDING FACE BRICK COLOR (TYPICAL).

NOTE:
RUN STEEL COVER CONTINUOUS FROM CONDENSING UNITS TO RISERS OR PENETRATIONS AT BUILDING WALL.

REFRIGERANT PIPE SUPPORT DETAIL

NO SCALE

ORIGINAL DRAWING SIGNED BY: DWAYNE C. SUDWEES
DATE ORIGINAL SIGNED: Jun 25, 2014
ORIGINAL ON FILE AT ENGINEERED SYSTEMS ASSOCIATES
1355 EAST CENTER, POCAHELLO, IDAHO 83201



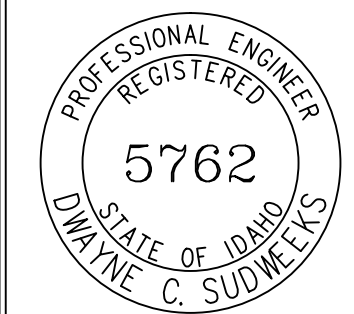
Engineered Systems Associates
Mechanical Engineers

Dwayne Sudweeks - Ron Rice
1355 East Center - Pocatello, Idaho 83201
Phone: (208) 233-0501 Fax: (208) 233-0529 email: esa@engsystems.com

A NEW OFFICE BUILDING FOR:
EAGLE ROCK FABRICATION
IDAHO FALLS, IDAHO

MECHANICAL DETAILS

PROJECT:



DRWN. BY:	OKD. BY:
SR	DCS
JOB NO.	DATE:
14068	JUNE 2014

SHEET:

M-2

OF: TWO