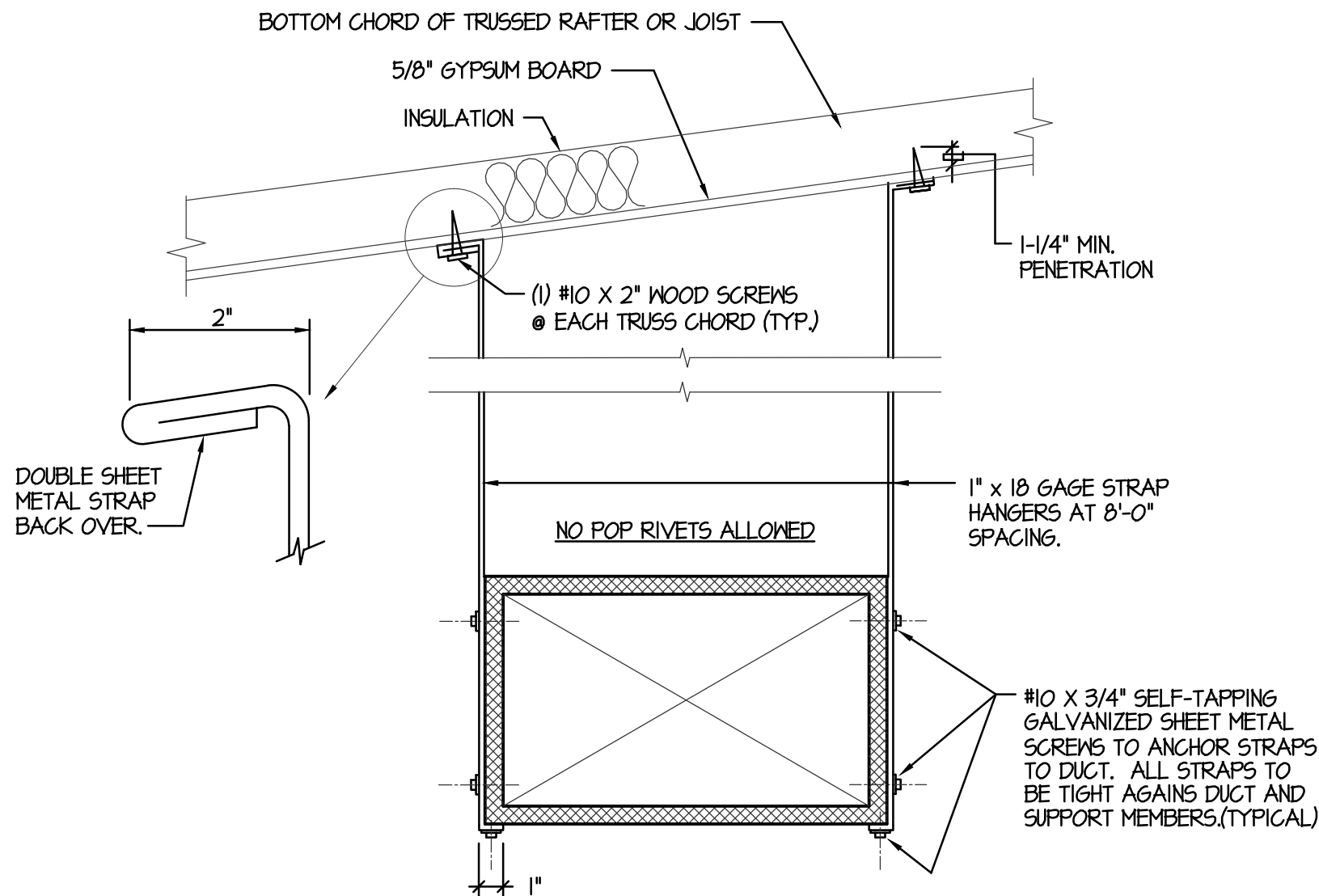
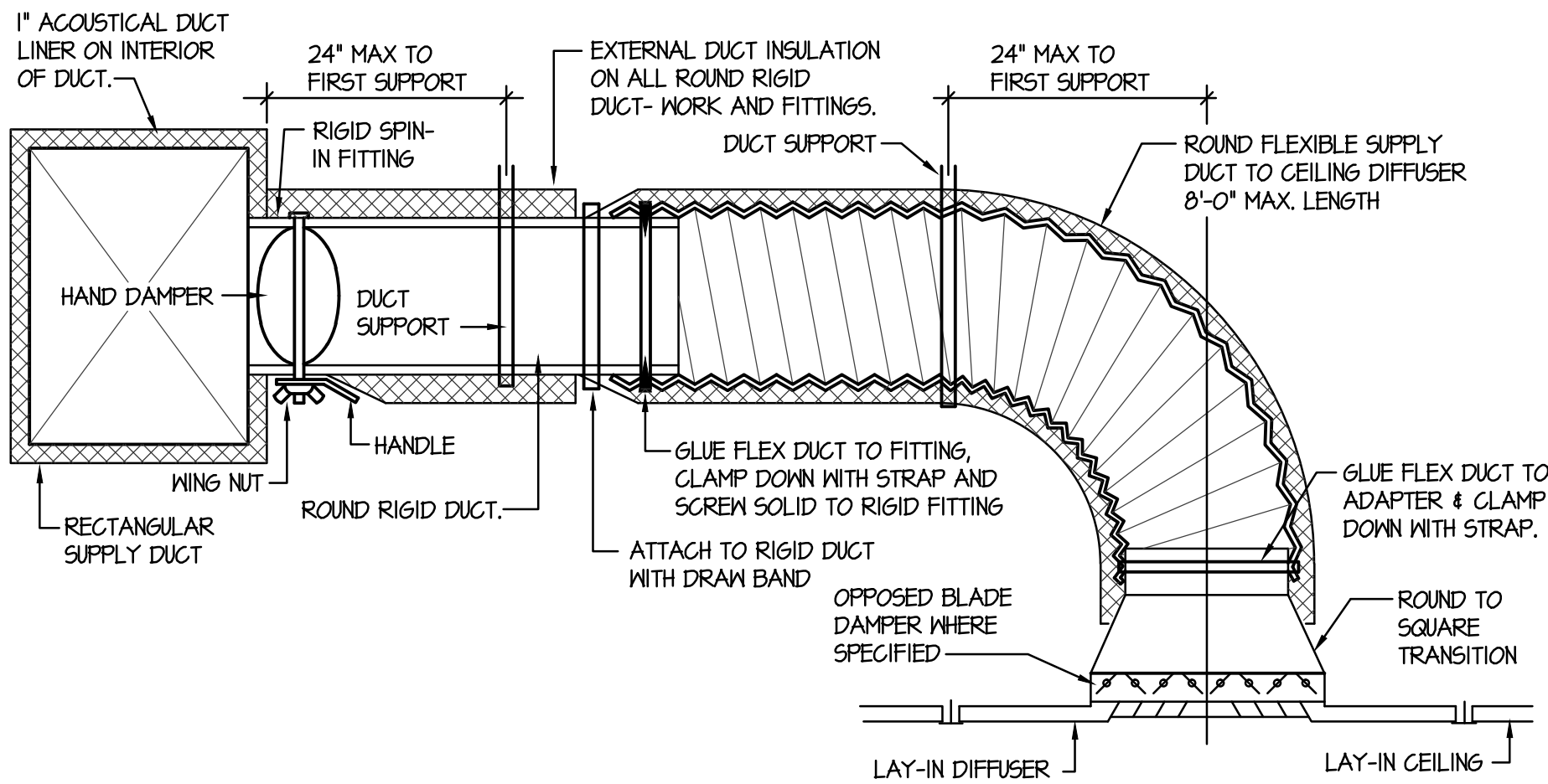


A DUCT CONSTRUCTION AND HANGER DETAIL
NO SCALE

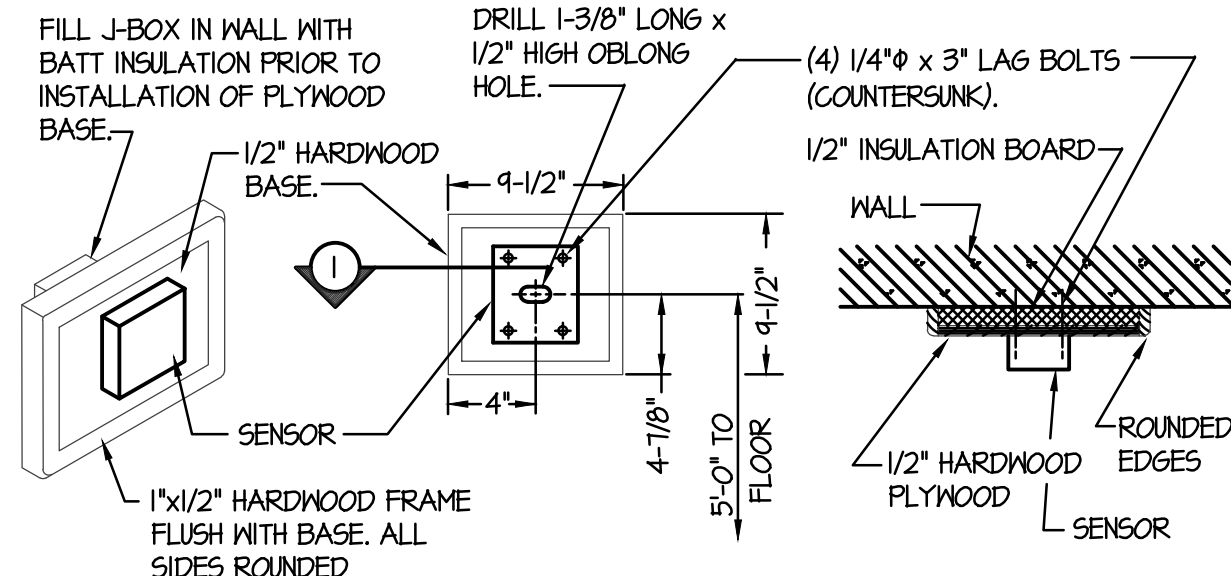


C DUCT STRAP HANGER DETAIL
NO SCALE



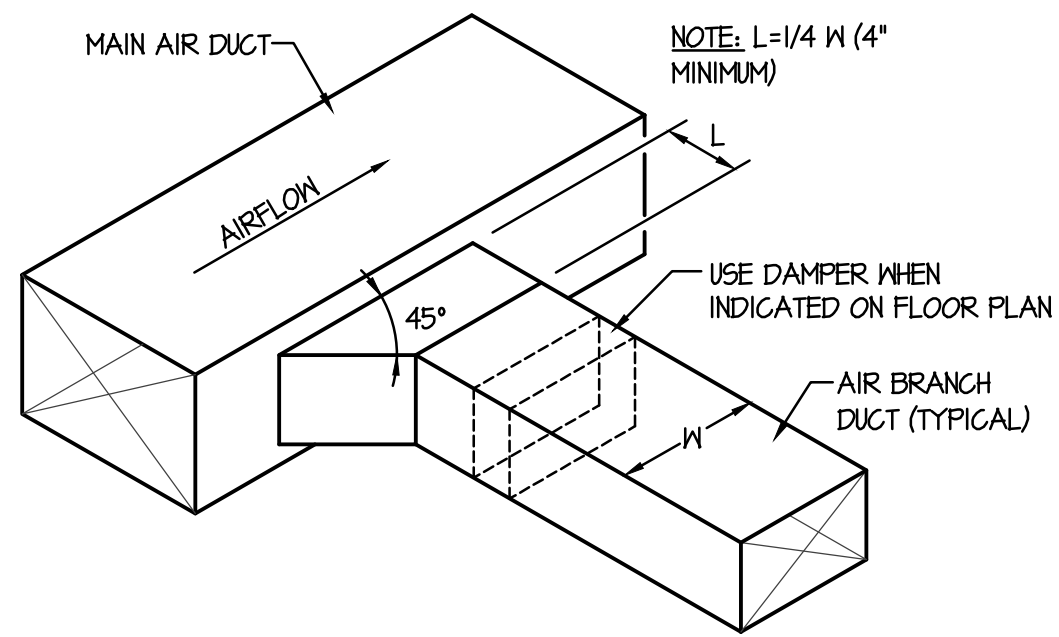
E CEILING DIFFUSER DETAIL WITH FLEXIBLE DUCT
NO SCALE

NOTES: 1- FINISH OF HARDWOOD FRAME AND HARDWOOD PLYWOOD PANEL TO MATCH OTHER WOOD TRIM OF FRAMES.
2- SEE MECHANICAL SHEETS FOR LOCATIONS OF SENSORS.



ISOMETRIC ELEVATION SECTION 1

B INSULATED BASE FOR SENSORS
NO SCALE (ALL REMOTE SENSORS THRU-OUT BUILDING)



D RECTANGULAR DUCT CONNECTION DETAIL
NO SCALE

ORIGINAL DRAWING SIGNED BY: DWAYNE C. SUDNEEKS
DATE ORIGINAL SIGNED: Jun 16, 2014
ORIGINAL ON FILE AT ENGINEERED SYSTEMS ASSOCIATES
1355 EAST CENTER, POCA TELLO, IDAHO 83201

Engineered Systems Associates
1355 EAST CENTER
POCA TELLO, IDAHO 83201
PHONE: (208) 233-0501
FAX: (208) 233-0529
EMAIL: esa@engsystems.com
ESA JOB NUMBER: 12133

Professional Engineer
DWAYNE C. SUDNEEKS
8008
IDaho
Date
WYOMING

CONSULTANTS:

CIVIL ENGINEERING
SUNRISE ENGINEERING
47 East 4th Ave.
Afton, Wyoming 833110
(307) 885-5800

STRUCTURAL ENGINEERING
TANNER SMITH BARFUSS & ASSOC
Structural Engineers
233 North 1250 West #201
Centerville, Utah 84014
(801) 298-8795

MECHANICAL ENGINEERING
ENGINEERED SYSTEMS ASSOC.
1355 East Center
Pocatello, Idaho 83201
(208) 233-0501
Fax (208) 233-0529

ELECTRICAL ENGINEERING
PAYNE ENGINEERING INC.
1823 E. Center St.
Pocatello, Idaho 83201
(208) 232-4439
Fax (208) 232-1435

PROJECT: LDS PHILANTHROPIES
REXBURG, IDAHO

DRAWING TITLE: MECHANICAL DETAILS

REVISION:

#	DATE	COMMENT

DRAWN BY: M. JENSEN
JOB NO: 548

CHECKED BY: D. SUDNEEKS
DATE: JAN. 2014

PLOT DATE: Jun 16, 2014

DRAWING NO. M2.1
FILE: 14067-M2.1.dwg

OF 3