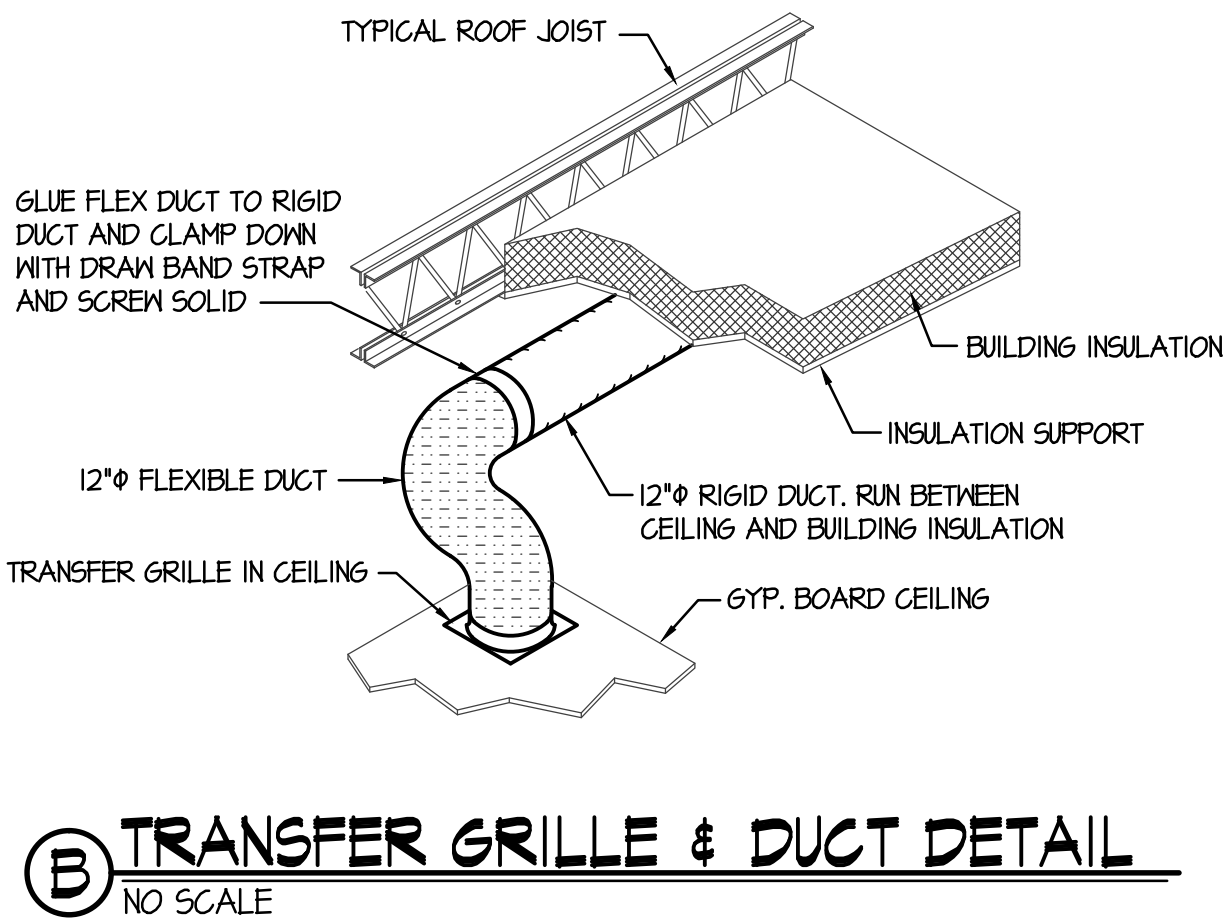
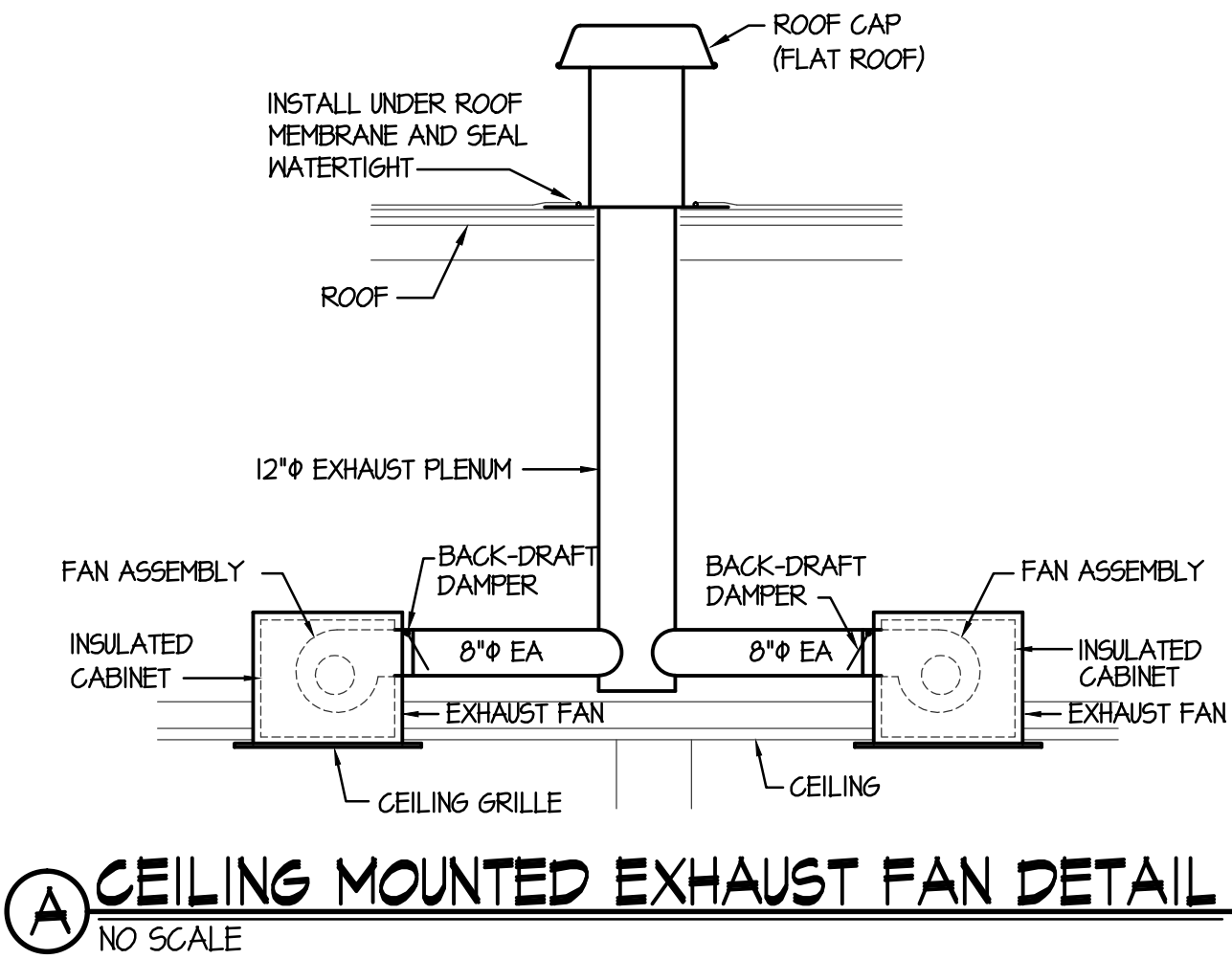


PLUMBING FIXTURE SCHEDULE							(A)
SYM.	DESCRIPTION	PIPE SIZE					REMARKS
		TRAP	WASTE	VENT	C.J.L.	H.J.L.	
(WC-1)	WATER CLOSET	INT.	4"	2"	1/2"	-	FLUSH TANK, 18" RIM HEIGHT (ADA APPROVED)
(WC-2)	WATER CLOSET	INT.	4"	2"	1/2"	-	FLUSH TANK
(U-1)	URINAL	INT.	2"	2"	1"	-	FLUSH VALVE, WALL MOUNTED
(L-1)	LAVATORY	1-1/2"	1-1/2"	1-1/2"	1/2"	1/2"	SELF SUPPORTING 20"x18" (ADA APPROVED). MOUNT AT HEIGHT SHOWN ON ARCH. DRAWINGS
(FD-1)	FLOOR DRAIN	2"	2"	2"	-	-	WITH DEEP SEAL P-TRAP AND TRAP PRIMER CONNECTION
(TP-1)	TRAP PRIMER	-	-	-	1/2"	-	PRECISION PRODUCTS MODEL PTS-B. RUN 1/2" PEX PIPING TO FLOOR DRAIN

(A) SEE SPECIFICATIONS FOR APPROVED MANUFACTURERS AND MODEL NUMBERS.



#### GENERAL NOTES:

- A- THE CONTRACTOR SHALL CHECK AND VERIFY ALL DIMENSIONS AND CONNECTIONS ON THE JOB SITE. ALL WORK SHALL BE EXECUTED FROM MEASUREMENTS TAKEN AT THE SITE.
- B- THE MECHANICAL CONTRACTOR SHALL BE RESPONSIBLE TO INSURE PROPER CODE CLEARANCES FOR ELECTRICAL AND MECHANICAL ACCESS WHEN INSTALLING ANY EQUIPMENT SUPPLIED BY THE MECHANICAL CONTRACTOR.
- C- IT IS CRITICAL THAT THIS CONTRACTOR COORDINATE EQUIPMENT LOCATIONS WITH PIPING, DUCTWORK, ELECTRICAL CONDUIT AND BUILDING STRUCTURE TO INSURE CODE COMPLIANCE.
- D- CEILING DIFFUSERS ARE SHOWN IN APPROXIMATE LOCATIONS. REFER TO LIGHTING PLANS AND REFLECTED CEILING PLAN FOR EXACT LOCATIONS.
- E- DUCT DIMENSIONS CALLED OUT ON DRAWINGS ARE INSIDE FREE AREA DIMENSIONS. ACOUSTICAL DUCT LINER ARE TO BE ADDED TO OVERALL MEASUREMENTS.
- F- ALL DUCTWORK AND PIPING WHICH PASSES THRU FIRE RATED WALLS TO BE FIRE STOPPED WITH APPROVED FOAM OR SEALANT. REFER TO SPECIFICATIONS FOR APPROVED MANUFACTURES.

ORIGINAL DRAWING SIGNED BY: DWAYNE C. SUDWEEKS  
DATE ORIGINAL SIGNED: Dec 16, 2014  
ORIGINAL ON FILE AT ENGINEERED SYSTEMS ASSOCIATES  
1355 EAST CENTER, POCATELLO, IDAHO 83201

PROFESSIONAL ENGINEER  
REGISTERED  
5762  
STATE OF IDAHO  
DWAYNE C. SUDWEEKS

Engineered Systems Associates

1355 EAST CENTER  
POCATELLO, IDAHO 83201  
PHONE: (208) 233-0501  
FAX: (208) 233-0529  
EMAIL: eso@engsystems.com  
ESA JOB NUMBER: 14031

nbw architects p.a.

ARCHITECTURE / PLANNING / INTERIORS  
SCOTT L NIELSON, A.I.A. KEVIN R BOOBY, A.I.A. JAMES H WYATT, A.I.A.  
990 JOHN DODDS PARKWAY P.O. BOX 2212 - IDAHO FALLS, IDAHO 83402-2212  
(P) 208-522-8785 (F) 208-522-8785 nbw-architects.com

INTERIOR REMODEL FOR:

BONNEVILLE H.S. Sr. SEMINARY  
IDAHO FALLS, IDAHO  
PROPERTY # 516-4362

SCHEDULES AND DETAILS

PROJECT:

PROJECT NO.  
13023  
DATE:  
November, 2014  
DRAWN BY:  
M. JENSEN  
CHECKED BY:  
D SUDWEEKS

REVISIONS


DRAWING NO.:

M2.1